

OFFICE CONDOMINIUM FOR SALE \$949,000 PRICE REDUCED! \$795,000



4966 El Camino Real, Suite 211 & 212 Los Altos, CA 94022



Property Details

- Newly Painted Interior!
- Available Now!
- Total Square Feet: $\pm 1,097$ SF
(Suite 211: ± 608 SF and Suite 212: ± 489 SF)
- 90% SBA Financing for Approved Buyers
- HOA Fee: Approximately \$700 per month
- Seller financing will be considered with 20% down payment at 6% fixed interest only for 5 years.
- Central Heating, Air Conditioning, Kitchen
- Centrally located from 280, 85, and 101 Caltrain: 0.8 mile walk (16 mins)
- Close to Amenities: Village at San Antonio, Peet's Coffee, Starbucks and Whole Foods
- [CT Commercial Zoning Information](#)



CT Zoning Info

Contact Agents For Details



Andrew Peceimer

Senior Commercial Real Estate Agent
DRE #00993289
(650) 344-4300
apeceimer@cbcburlingame.com



Garrett Swartz

Commercial Real Estate Agent
DRE #02178894
(650) 352-3302
gswartz@cbcburlingame.com

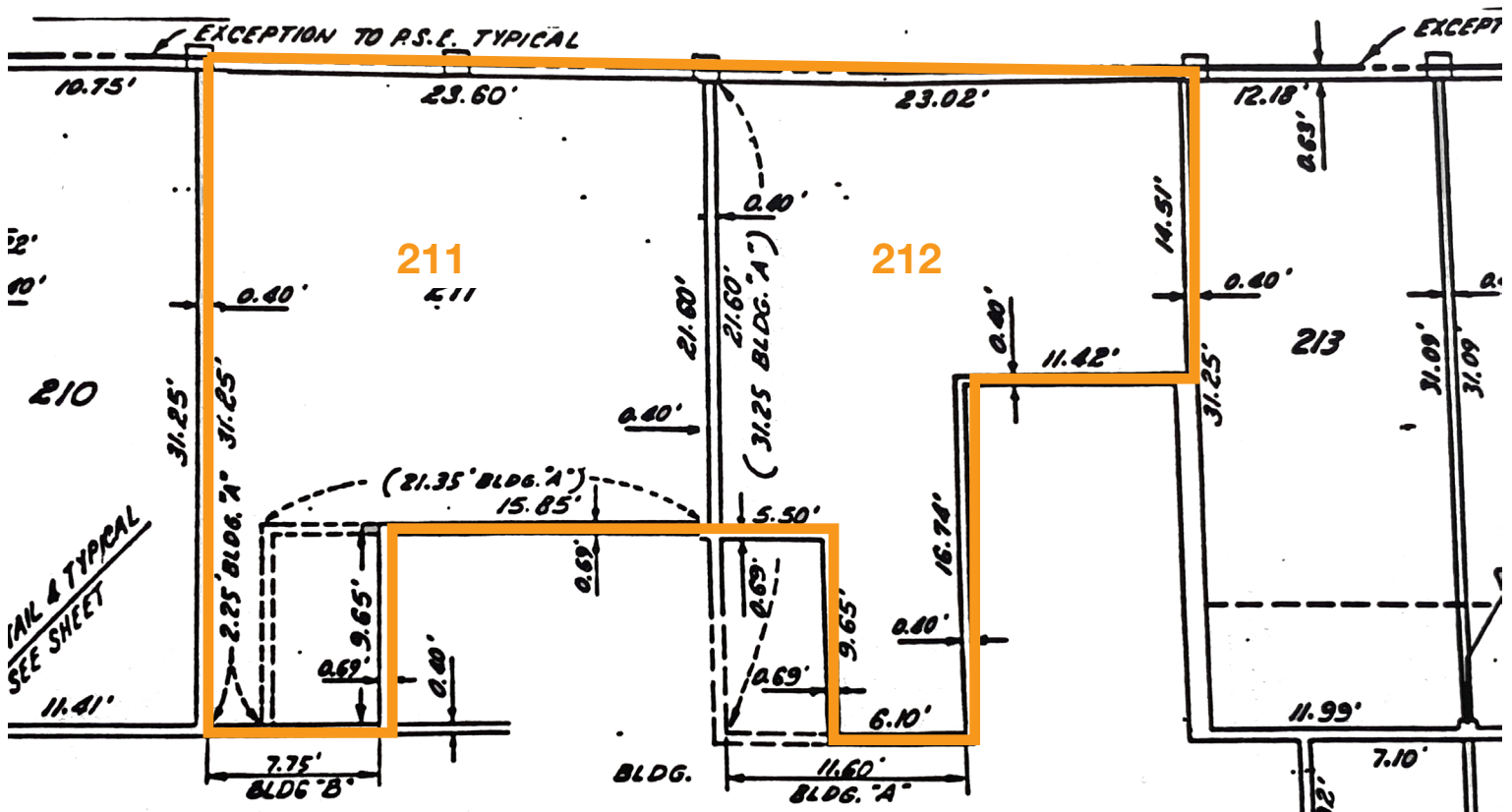


**COLDWELL BANKER
COMMERCIAL**
WESTBAY REAL ESTATE
GROUP

1575 Bayshore Highway, Suite 100,
Burlingame, CA 94010
650-344-4300 | CBCBurlingame.com

OFFICE CONDOMINIUM FOR SALE \$949,000 PRICE REDUCED! \$795,000

Floor Plan - 4966 El Camino Real, Suite 211 & 212, Los Altos



Contact Agents For Details



Andrew Peceimer
Senior Commercial Real Estate Agent
DRE #00993289
(650) 344-4300
apeceimer@cbcburlingame.com



Garrett Swartz
Commercial Real Estate Agent
DRE #02178894
(650) 352-3302
gswartz@cbcburlingame.com



**COLDWELL BANKER
COMMERCIAL**
WESTBAY REAL ESTATE
GROUP

1575 Bayshore Highway, Suite 100,
Burlingame, CA 94010
650-344-4300 | CBCBurlingame.com