



GOODMAN INDUSTRIAL CENTER SAN FRANCISCO NAPOLEON

26K - 85k sqft
Building Area
with additional
±6k sqft
Parking/Land

180-222 & 25-299 Napoleon St.
San Francisco, CA 94124



STRATEGIC LOCATION

The San Francisco Bay Area is one of the nation's prominent geographies and is home to 7.77 million people. The region operates as an interconnected network of both urban and suburban enclaves, with San Francisco at its focal point.

The Bay Area is California's second largest urban area in terms of geography, and has an economy that produces a GDP of \$1 trillion, a number that ranks 17th among the top countries in the world.



SCALABLE SPACE



Exterior 222 Napoleon



Interior 222 Napoleon



Interior 222 Napoleon



196 Napoleon Interior



196 Napoleon Interior

Goodman Industrial Center San Francisco Napoleon is multi-tenant industrial site currently offering 26K - 85k sqft of space and 20 car spaces across street in secured parking / yard.

Featuring dock high loading and parking opportunities, this property is already setup for future growth.



SCAN HERE TO VIEW THE VIRTUAL TOUR



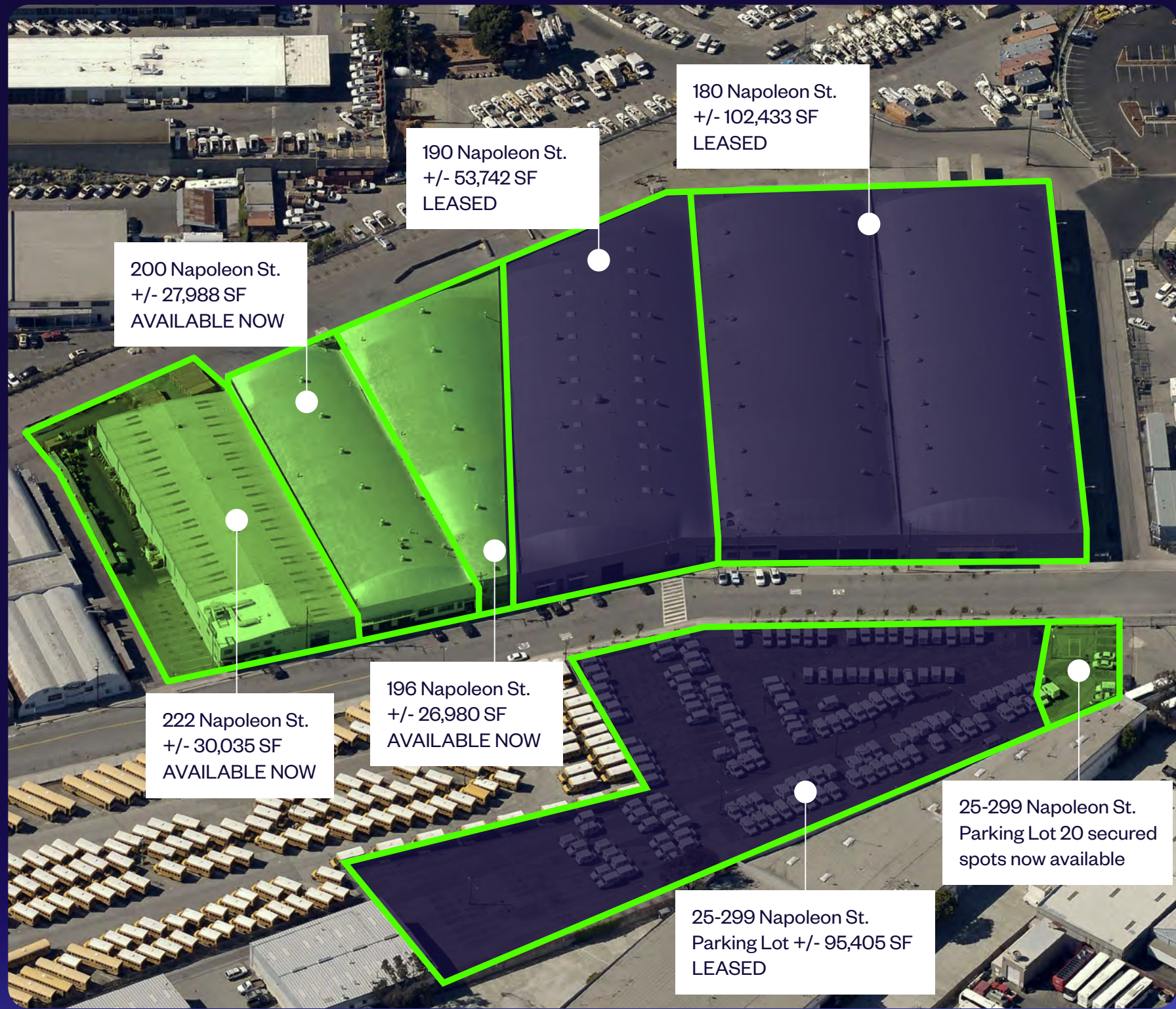
EXTERIOR

Lease opportunities are now available, call to tour today.

- + 26K - 85k sqft Building Area available with additional \pm 6k sqft Parking/Land
- + Easy access to the 101, and 280 Freeways
- + PDR-2 Zoning
- + Clear Span in warehouse areas

Available now

GIG SAN FRANCISCO NAPOLEON



180 Napoleon St.
+/- 102,433 SF
LEASED

190 Napoleon St.
+/- 53,742 SF
LEASED

200 Napoleon St.
+/- 27,988 SF
AVAILABLE NOW

196 Napoleon St.
+/- 26,980 SF
AVAILABLE NOW

222 Napoleon St.
+/- 30,035 SF
AVAILABLE NOW

25-299 Napoleon St.
Parking Lot +/- 95,405 SF
LEASED

25-299 Napoleon St.
Parking Lot 20 secured
spots now available

SITE PLAN

196 NAPOLEON ST. 26,980 sqft

Warehouse	22,619 sqft
Office	4,361 sqft
Power available	400 Amps 240V
Clear height	18'
Grade level doors	1 door
Pony dock	1 dock

Clear span in warehouse.

200 NAPOLEON ST. 27,988 sqft

Warehouse	19,205 sqft
Office	8,783 sqft
Power available	400Amps 240V 600 Amps 480V
Clear height	18'
Grade level doors	2 doors

Clear span in warehouse.
196 & 200 can be combined for 54,968 sqft

222 NAPOLEON ST. 30,035 sqft

Warehouse	24,662 sqft
Office	5,373 sqft
Power available	600Amps 240V
Clear height	16'
Grade level doors	3 doors
Auto parking	25 spaces

Clear span in warehouse.



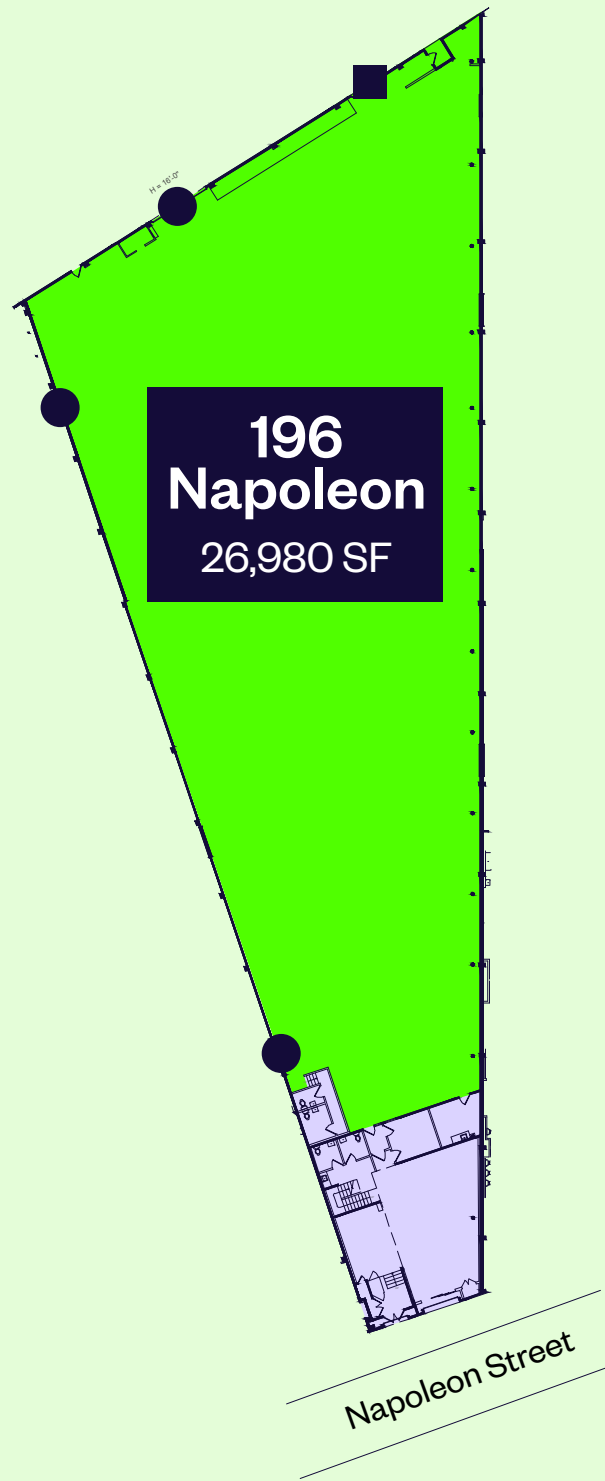
OFFICE SPACE
WAREHOUSE

● Grade level doors ■ Pony dock

SITE PLAN

196 NAPOLEON ST.	26,980 sqft
Warehouse	22,619 sqft
Office	4,361 sqft
Power available	400 Amps 240V
Clear height	18'
Grade level doors	1 door
Pony dock	1 dock

Clear span in warehouse.
Can be combined with 200 Napoleon
for a total of 54,968 sqft



OFFICE SPACE
WAREHOUSE

● Grade level doors ■ Pony dock

SITE PLAN

200 NAPOLEON ST.	27,988 sqft
Warehouse	19,205 sqft
Office	8,783 sqft
Power available	400Amps 240V 600 Amps 480V
Clear height	18'
Grade level doors	2 doors

**Clear span in warehouse.
Can be combined with 196 Napoleon
for a total of 54,968 sqft**



Napoleon Street

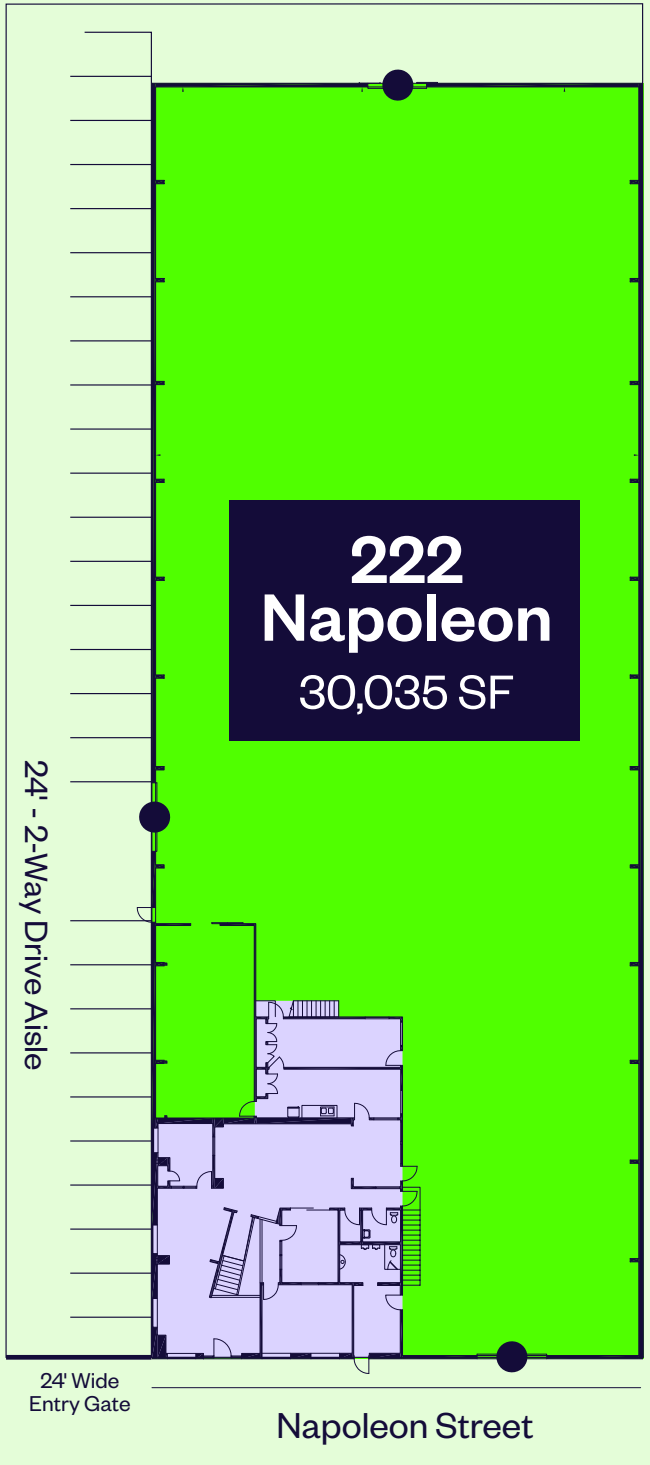
OFFICE SPACE
WAREHOUSE

● Grade level doors

SITE PLAN

222 NAPOLEON ST.	30,035 sqft
Warehouse	24,662 sqft
Office	5,373 sqft
Power available	600Amps 240V
Clear height	16'
Grade level doors	3 doors
Auto parking	25 spaces

Clear span in warehouse.



OFFICE SPACE
WAREHOUSE

● Grade level doors

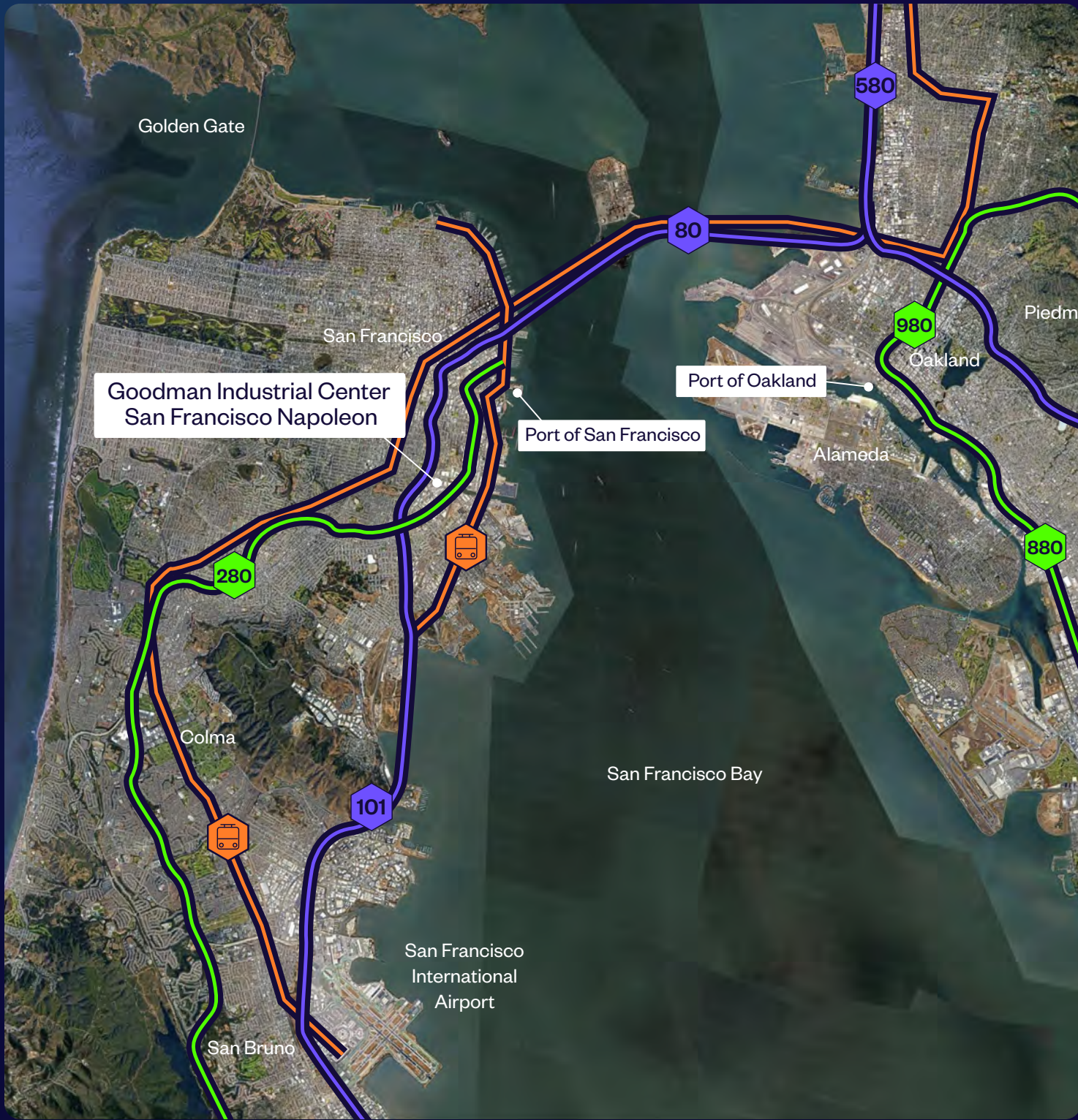
PARKING PLAN

AVAILABLE SPACE 20 spaces

Fenced, Lit, and Paved Yard
Occupancy: Available now



■ LEASED
■ AVAILABLE



LOCATION

180-222 & 25-299 Napoleon Street,
San Francisco, CA 94124

Customers enjoy unrivalled motorway connectivity with direct access to the 101 and 280 Freeways.



ROAD

101 freeway	0.5 miles
280 freeway	0.8 miles



TRAIN

3rd Street Muni	1 miles
CalTrain Station	1.2 miles
Bart Station	1.5 miles



AIRPORTS

SFO International Airport	10.6 miles
Oakland International Airport	20.8 miles



PORTS

Port of San Francisco	10 miles
Port of Oakland	18 miles

AMENITIES



Food and beverage

- + The Chairman
- + The Deli Lama
- + The Old Clam House
- + Za'atar
- + Ichido
- + Bayshore Taqueria
- + BrewVino, SF
- + Chicken as Cluck
- + BAOZ
- + Philz Coffee
- + Grand Seven Food Liquor & Deli
- + Luna's Coffee House
- + Destapas
- + Good Gai's
- + Besharam
- + Dagwood & Scoops
- + Manivanh Thai Restaurant
- + Deli 23
- + The Happy Vegan
- + Caffe Duetto
- + DâMai:ze
- + J & E Restaurant
- + Silver Crest Donut Shop
- + Wok & Go
- + Macho Tacos

Shopping

- + Forest Restaurant Supply
- + SCRAP
- + Heathervox
- + Discount Fabrics - SF
- + JCX Expendables
- + The Futon Shop
- + DCL Productions
- + SF Garden Supply
- + Simple Floors - SF
- + Continental Battery Systems
- + Social Imprints
- + Galls
- + Restaurant Depot
- + Gilmans Kitchens and Baths
- + Videofax
- + Cycon Office Systems
- + Sartor - Quality Saw Works
- + Grand Central Station Antiques
- + Lowe's Home Improvement
- + JR Seafood
- + Urban Hardwoods Furniture
- + Airgas Store
- + Cayson
- + Galanter & Jones

CONTACT US



INQUIRE NOW

Joanna Burka
Property Manager
joanna.burka@goodman.com
949 407 0193



Scott Mason
License #: 01036610
scott@calcosf.com
415 215 1937



Marc Pope
License #: 01474483
marc.pope@cushwake.com
650 401 2131

Gary Boitano
License #: 01474483
gary.boitano@cushwake.com
650 401 2122

GoodmanNapoleon.com
us.goodman.com