

FOR LEASE

EASTPORT BUSINESS PARK

4025 NE Lakewood Way, Suite 150, Lee's Summit, MO



PROPERTY FEATURES

- 2,580 SF Vacant For Lease
- Ground Level Entry Into Space
- 2004 Construction
- Visible From 291 Hwy
- Direct Access to Parking
- Good Quality Finishes
- Good Mix of Private Offices and Open Work Station Areas
- Programmable Thermostats
- Owners' Association Maintains the Building's Exterior and Grounds

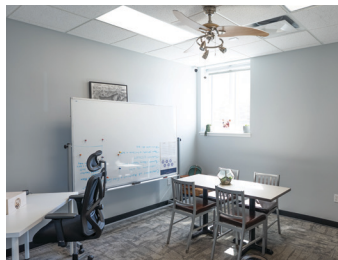
CONTACT

Brad Hakes
Hakes Real Estate, LLC
816.803.8120
bradhakes@hakesre.com

FOR LEASE

EASTPORT BUSINESS PARK

4025 NE Lakewood Way, Suite 150, Lee's Summit, MO



CONTACT

Brad Hakes
Hakes Real Estate, LLC
816.803.8120
bradhakes@hakesre.com