



For Lease | ± 7.25 Acres of Graveled Yard

Approved for Truck Parking & Heavy Equipment Storage

6350 Bradshaw Road, Sacramento, CA

Spencer Applegate

Senior Vice President
+1 916 563 3004
spencer.applegate@colliers.com
CA Lic. 01938234

Tommy Ponder, SIOR

Executive Vice President
+1 916 563 3005
tommy.ponder@colliers.com
CA Lic. 01431506

George Vrame, SIOR

Vice President
+1 916 563 3041
george.vrame@colliers.com
CA Lic. 02028936

Thomas Skeoch

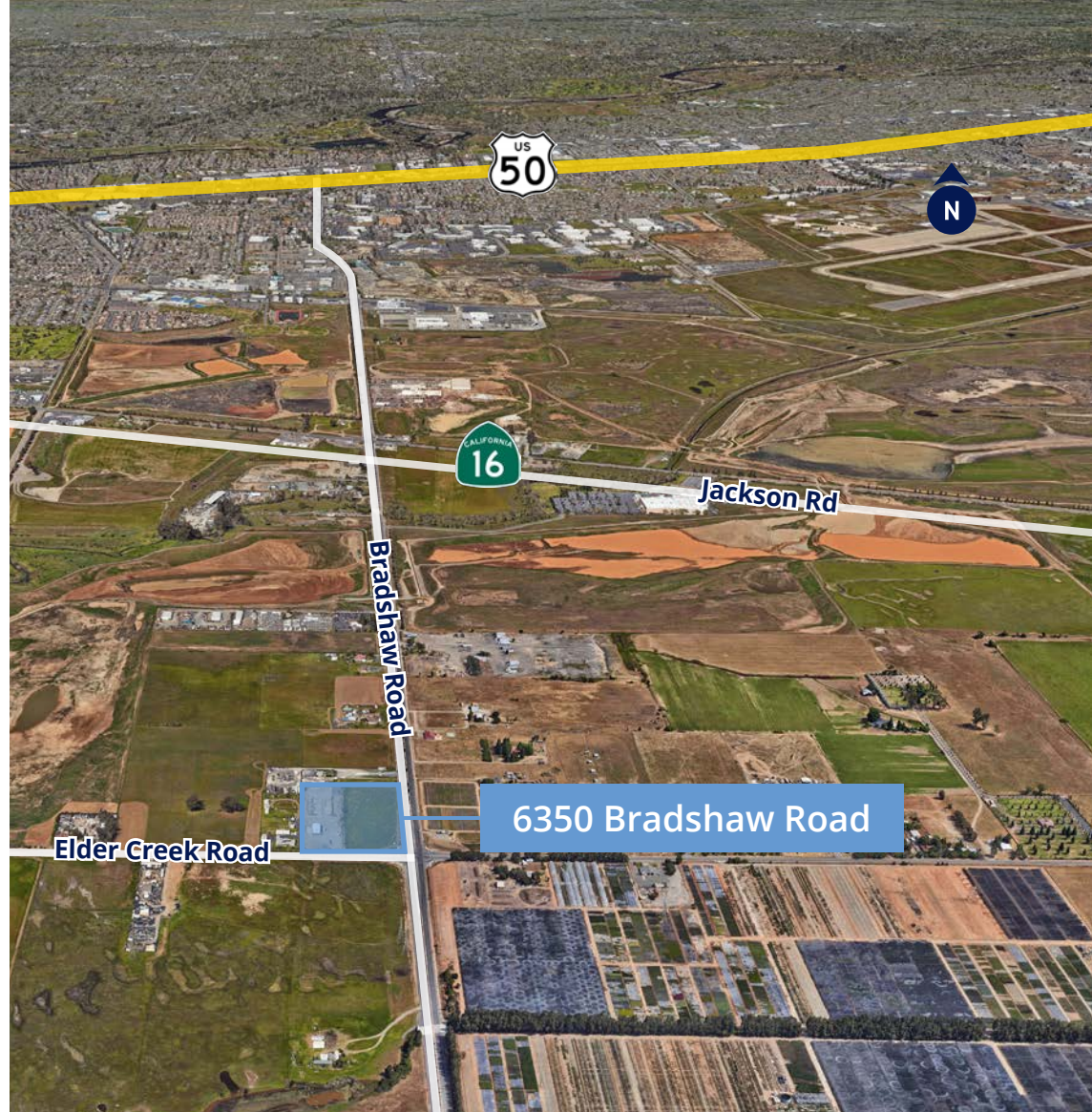
Associate
+1 916 563 6658
thomas.skeoch@colliers.com
CA Lic. 02222937



Property Details

- Multi-Tenant Property
- ±7.25 AC Available
- Truegrid Gravel Yard
- LED Yard Lighting
- 10' Perimeter Fence
- Electronic Gate
- 24/7 Access for Tenants
- Security Cameras throughout
- ±2,000 SF metal shop with restroom
- Zoned: GC (General Commercial)
- Approved for Truck Parking & Heavy Equipment Storage
- (2) 12' x 14' Grade Level Doors
- (1) 10' x 12' Grade Level Door





Spencer Applegate

Senior Vice President

+1 916 563 3004

spencer.applegate@colliers.com

CA Lic. 01938234

Tommy Ponder, SIOR

Executive Vice President

+1 916 563 3005

tommy.ponder@colliers.com

CA Lic. 01431506

George Vrame, SIOR

Vice President

+1 916 563 3041

george.vrame@colliers.com

CA Lic. 02028936

Thomas Skeoch

Associate

+1 916 563 6658

thomas.skeoch@colliers.com

CA Lic. 02222937

Colliers