

FOR LEASE | ±3.53 ACRES | INDUSTRIAL OUTDOOR STORAGE (IP ZONED)

HARRY REID INTERNATIONAL AIRPORT



SCAN & SUBSCRIBE!
LARKIN
INDUSTRIAL GROUP

2180 E Pama Ln, Las Vegas, NV 89119

NAIExcel
COMMERCIAL REAL ESTATE SERVICES, WORLDWIDE

6064 South Durango Drive,
Las Vegas, NV 89113
702.383.3383 | naiexcel.com

LISTING LEAD

Eric J. Larkin, MBA, CCIM, SIOR
LIC#BS.0073906
702.279.2479
elarkin@naiexcel.com

Leslie Houston, SIOR
LIC#S.01879121
660.287.2253
lhouston@naiexcel.com

Seth Wright
LIC#S.0202229
949.531.8369
swright@naiexcel.com



Property Summary

NNN LEASE RATE/MO	\$45,000
NNN EXPENSES	\$3,080
TOTAL BUILDING SQFT	±1,500 SF
ACRES	±3.53
AVAILABLE	August 1, 2026

- Total Bldg ±1,500 SF office
- APN: 177-02-613-002
- ± 3.53 AC
- (I-P) Industrial Park Zoning
- Fully improved paved, gated, fenced, and lighted industrial yard
- Improved Construction (2006)
- Airport Submarket
- Power, water, and sewer services available
- Tenant responsible for all operating expenses, taxes and insurance

*To be verified.





THE LAS VEGAS STRIP

HARRY REID INTERNATIONAL AIRPORT

FULLY IMPROVED,
GATED, FENCED AND
LIGHTED IOS SITE

SURREY ST

±1,500 SF
MODULAR
OFFICE

PAMA LN

GATE

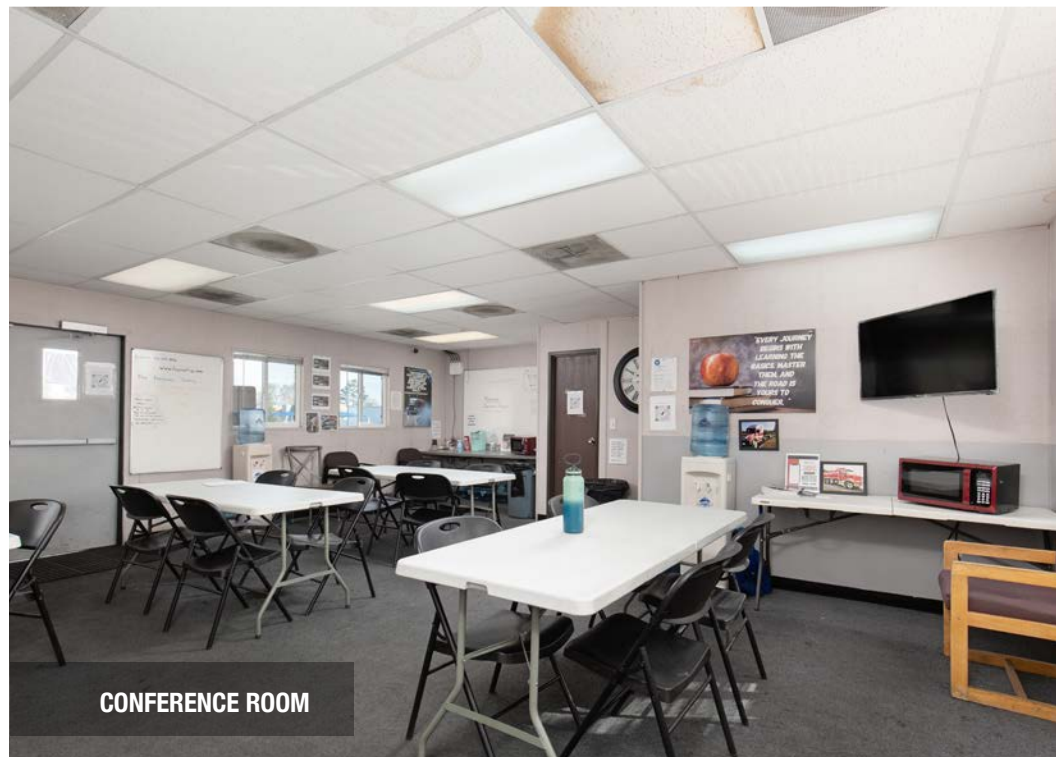
GATE

GATE

Area Map





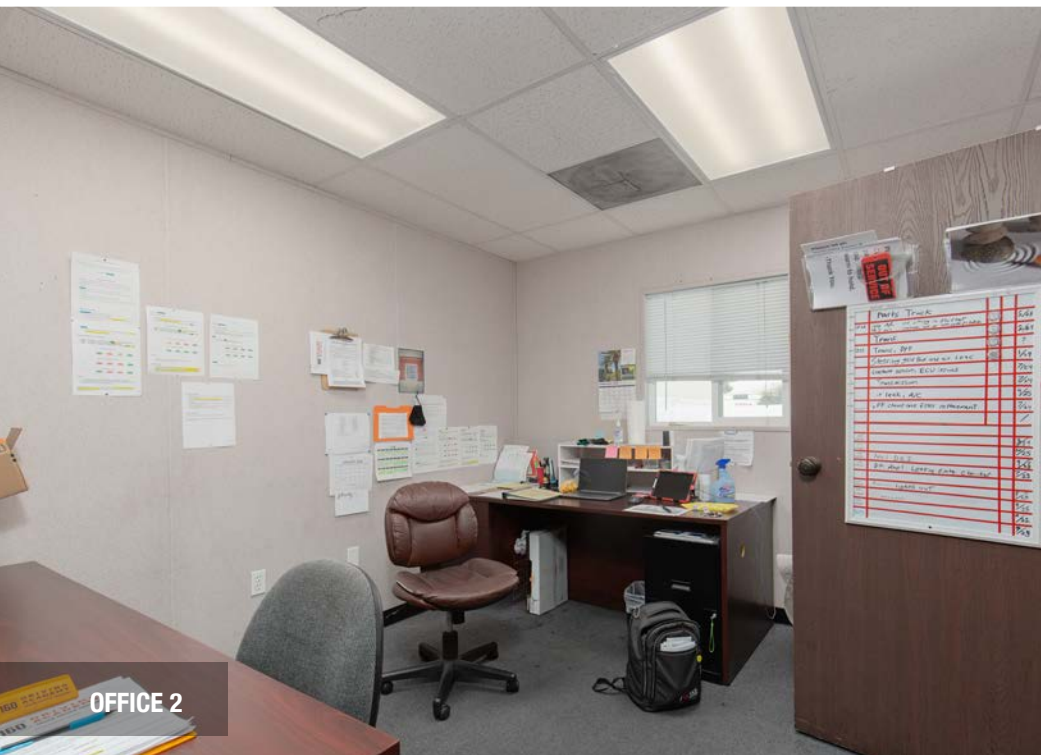




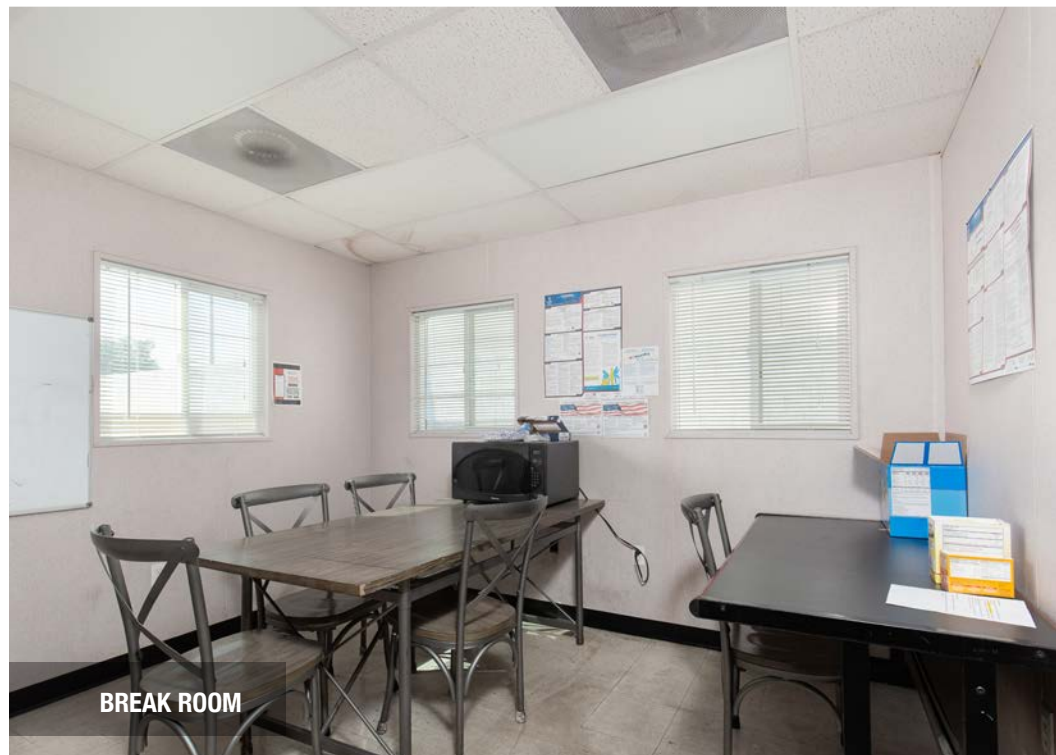
CONFERENCE ROOM



MAIN OFFICE



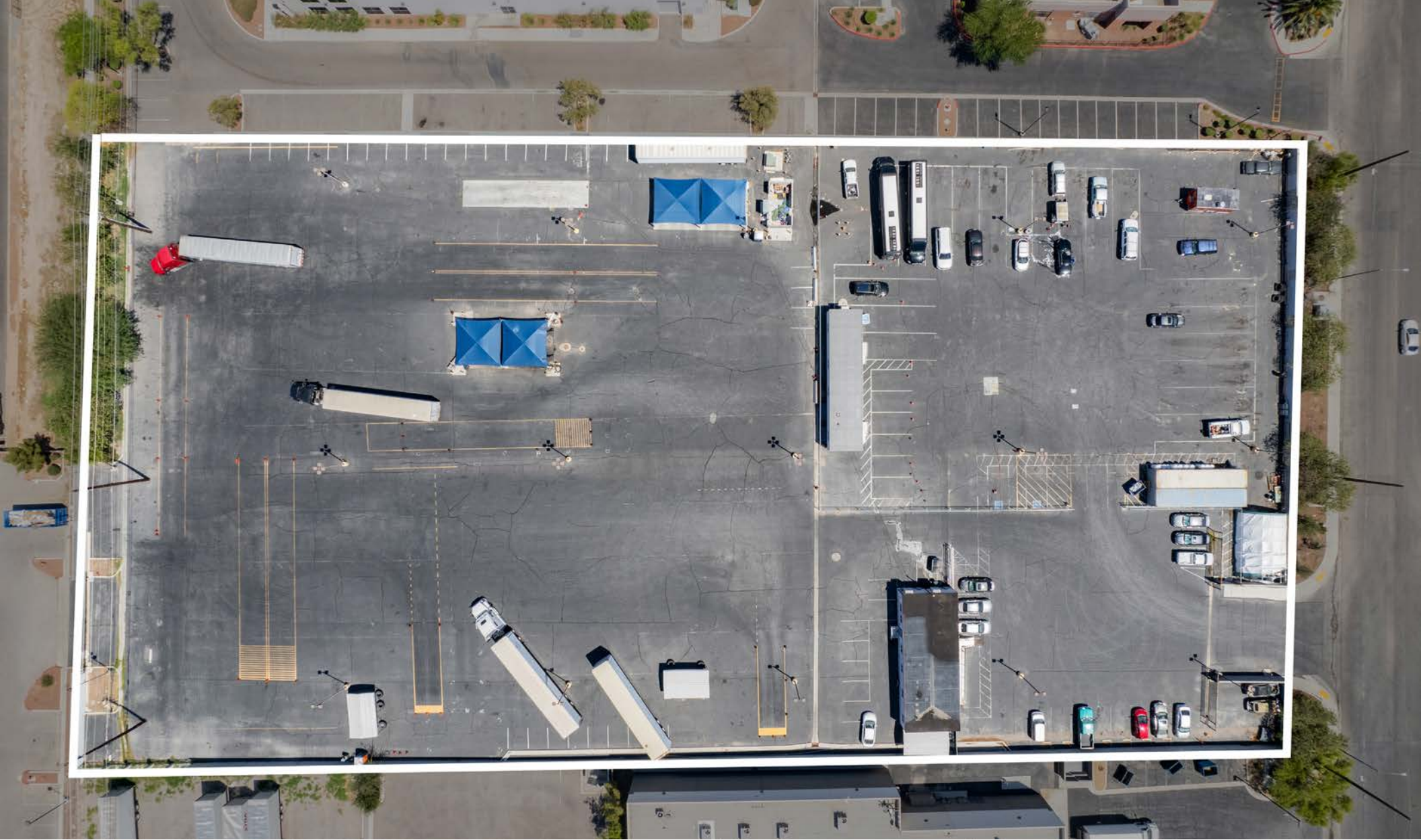
OFFICE 2



BREAK ROOM

Area Map





COMMERCIAL REAL ESTATE SERVICES, WORLDWIDE

6064 South Durango Drive,
Las Vegas, NV 89113
702.383.3383 | naiexcel.com

LISTING LEAD

Eric J. Larkin, MBA, CCIM, SIOR

LIC#BS.0073906
702.279.2479
elarkin@naiexcel.com

Leslie Houston, SIOR

LIC#S.01879121
660.287.2253
lhouston@naiexcel.com

Seth Wright

LIC#S.0202229
949.531.8369
swright@naiexcel.com

