



CLARK INDUSTRIAL PARK BUILDINGS

INDUSTRIAL PROPERTY FOR LEASE | 2130 & 2138 E ENDEAVOR ST | IDAHO FALLS, ID



BUILDING SIMILAR - ILLUSTRATION FOR CONCEPTUAL PURPOSES ONLY

CONTACT

DARREN PUETZ

208.656.2273

darren@tokcommercial.com

MARK BOUCHARD

208.357.4995

mark@tokcommercial.com

BLAKE PHIPPEN

208.357.4996

blake@tokcommercial.com

BRADLEY NICOLL

208.243.8036

bradley@tokcommercial.com

HIGHLIGHTS



New Industrial/Flex buildings; offers 4,000 - 8,000 SF suites!

Overhead door, bathroom, and an office are included in each suite.

Excellent location in emerging industrial park, near John Deere, Costco, and just off Yellowstone Hwy (Hwy 26)!

DETAILS



SPACE	SIZE	AVAILABLE
2130 Endeavor	4,000 - 8,000 SF	Immediately
2138 Endeavor	4,000 SF	April 1, 2026

PROPERTY TYPE:	Industrial
BLDG SIZE:	12,000 SF
LEASE RATE:	Contact Agent
OVERHEAD DOORS:	(1) 14' x 14'
POWER:	3-Phase
YEAR BUILT:	2025

UPDATED: 12.30.2025

THIS PROPERTY IS EXCLUSIVELY MARKETING BY TOK EASTERN IDAHO LLC DBA TOK COMMERCIAL
This information was obtained from sources believed reliable but cannot be guaranteed. Any opinions or estimates are used for example only.

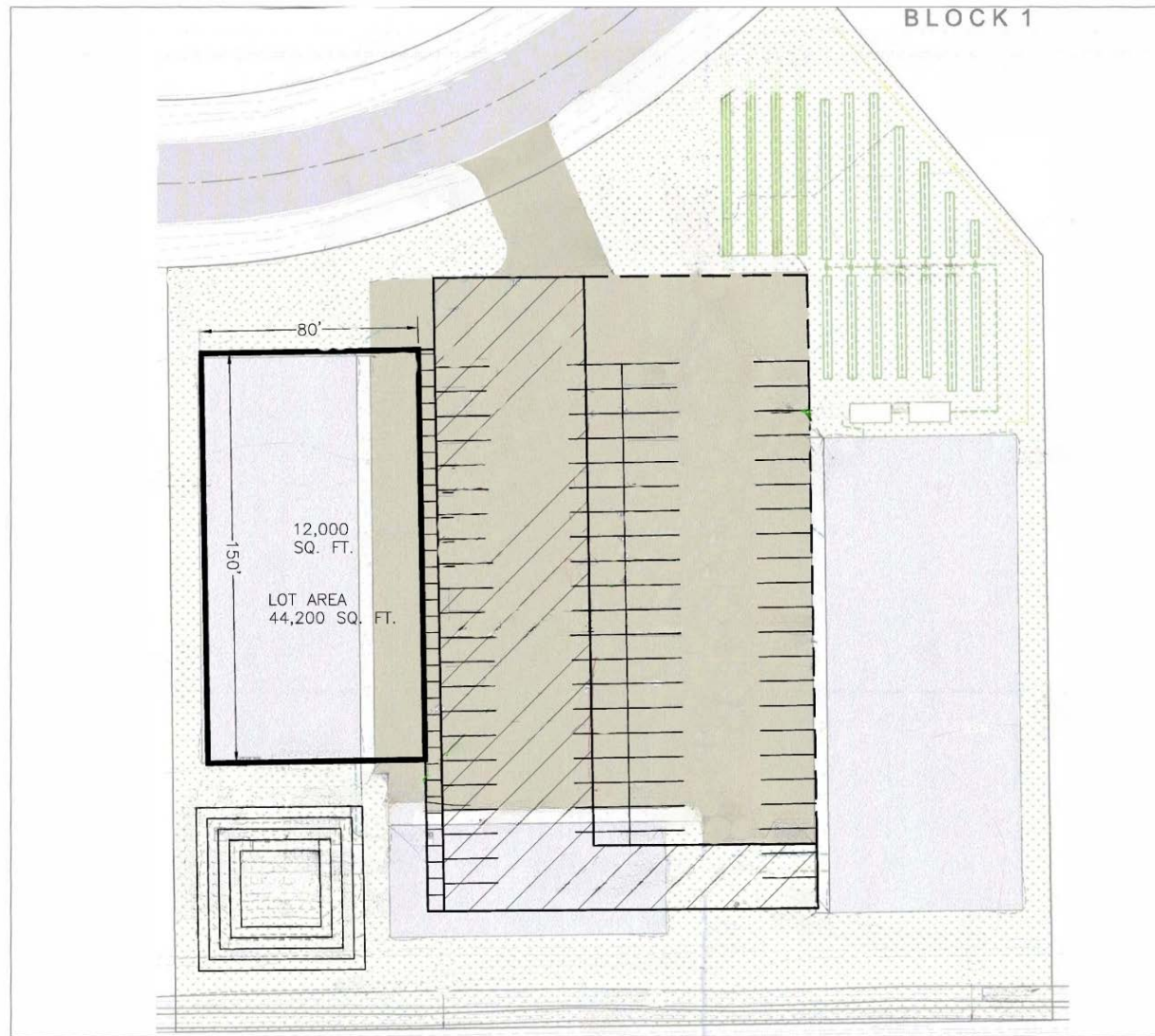
TokCOMMERCIAL.COM



FLOOR PLAN

UPDATED: 12.30.2025

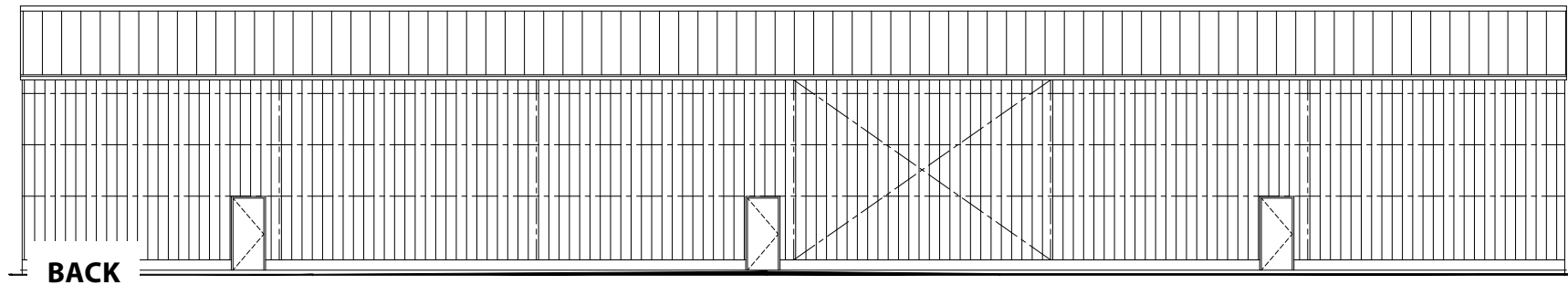
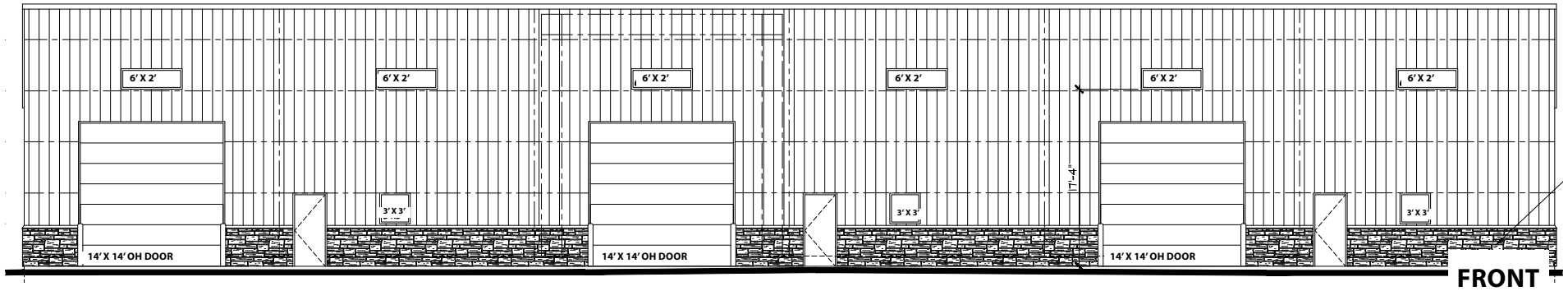
THIS PROPERTY IS EXCLUSIVELY MARKETING BY TOK EASTERN IDAHO LLC DBA TOK COMMERCIAL
This information was obtained from sources believed reliable but cannot be guaranteed. Any opinions or estimates are used for example only.



SITE PLAN

UPDATED: 12.30.2025

THIS PROPERTY IS EXCLUSIVELY MARKETING BY TOK EASTERN IDAHO LLC DBA TOK COMMERCIAL
This information was obtained from sources believed reliable but cannot be guaranteed. Any opinions or estimates are used for example only.



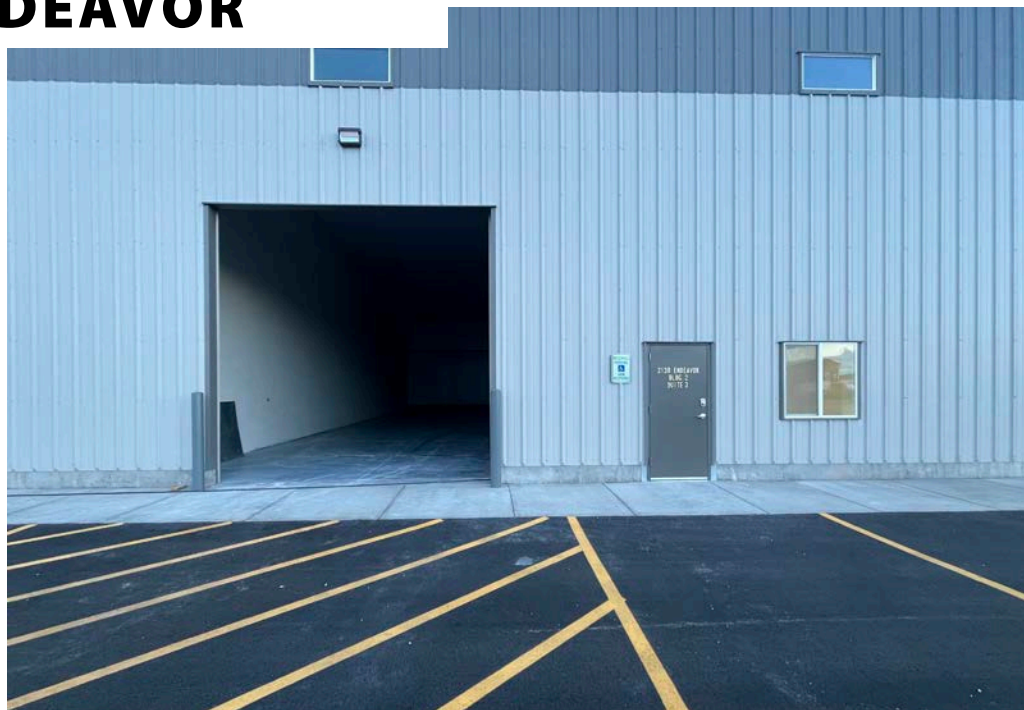
BUILDING ELEVATIONS

UPDATED: 12.30.2025

THIS PROPERTY IS EXCLUSIVELY MARKETING BY TOK EASTERN IDAHO LLC DBA TOK COMMERCIAL
This information was obtained from sources believed reliable but cannot be guaranteed. Any opinions or estimates are used for example only.



2130 ENDEAVOR



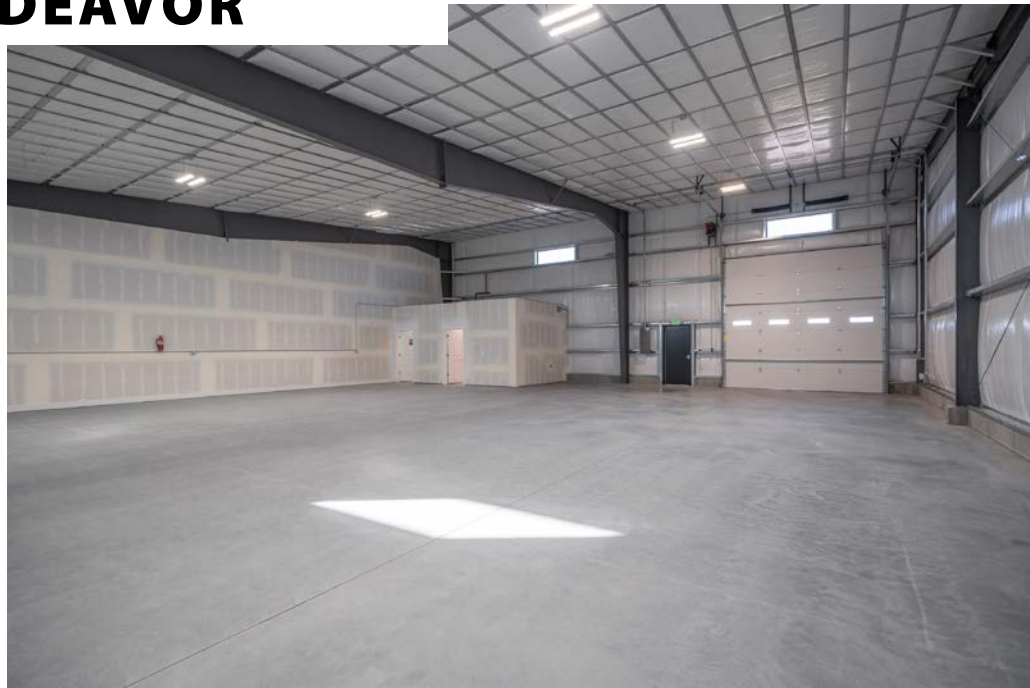
UPDATED: 12.30.2025

THIS PROPERTY IS EXCLUSIVELY MARKETING BY TOK EASTERN IDAHO LLC DBA TOK COMMERCIAL
This information was obtained from sources believed reliable but cannot be guaranteed. Any opinions or estimates are used for example only.

TOKCOMMERCIAL.COM



2138 ENDEAVOR



UPDATED: 12.30.2025

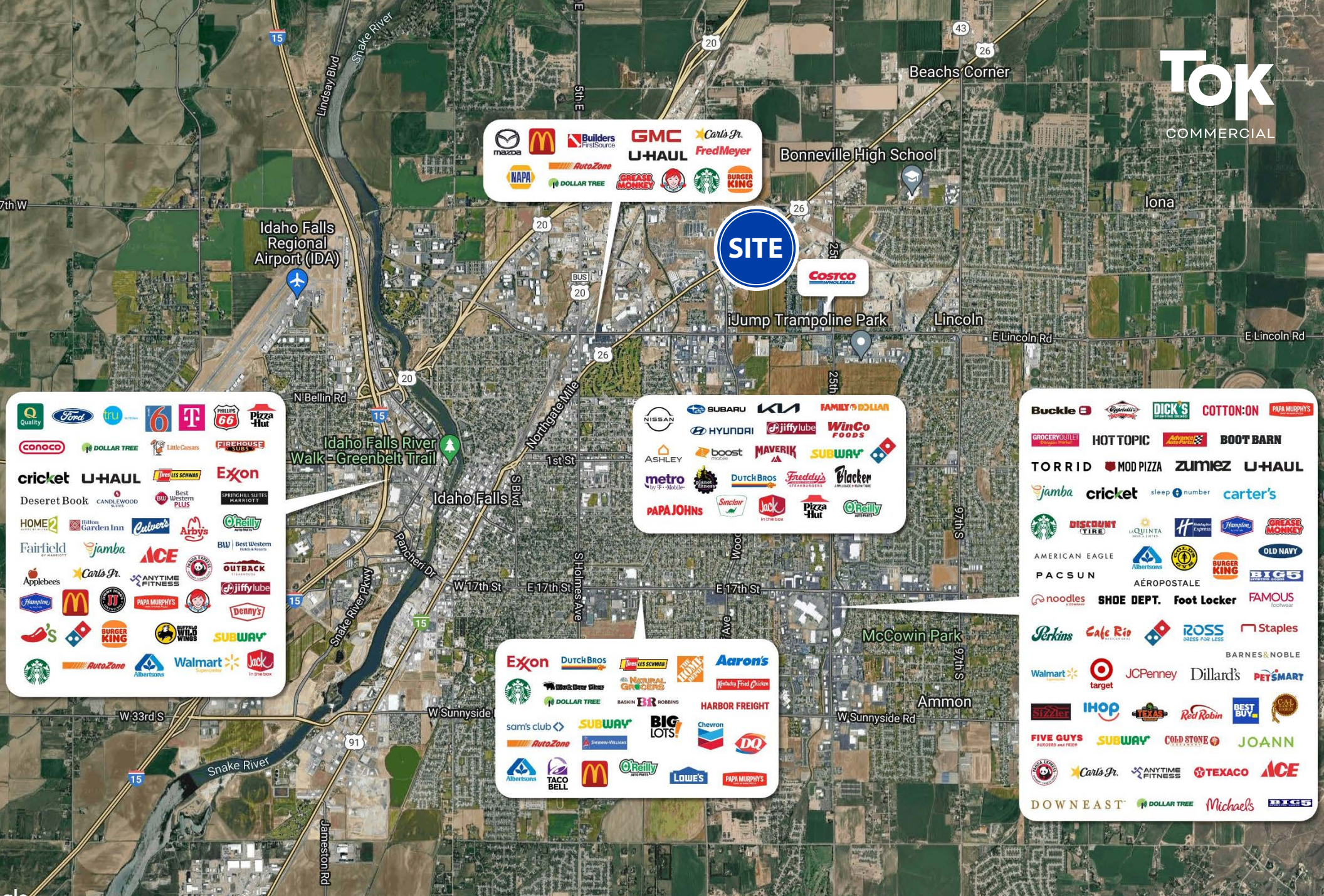
THIS PROPERTY IS EXCLUSIVELY MARKETING BY TOK EASTERN IDAHO LLC DBA TOK COMMERCIAL
This information was obtained from sources believed reliable but cannot be guaranteed. Any opinions or estimates are used for example only.

TOKCOMMERCIAL.COM



UPDATED: 12.30.2025

THIS PROPERTY IS EXCLUSIVELY MARKETING BY TOK EASTERN IDAHO LLC DBA TOK COMMERCIAL
This information was obtained from sources believed reliable but cannot be guaranteed. Any opinions or estimates are used for example only.



Logos for businesses near the site:

- mazda, McDonald's, Builders FirstSource, GMC, U-HAUL, Carl's Jr., Fred Meyer
- NAPA, AutoZone, DOLLAR TREE, GREASE MONKEY, STARBUCKS, BURGER KING

SITE

COSTCO WHOLESALE

Logos for businesses near the site:

- NISSAN, SUBARU, KIA, FAMILY DOLLAR, HYUNDAI, jiffy lube, WinCo FOODS
- ASHLEY, boost, MAVERIK, SUBWAY, metro by T-Mobile, Dutch Bros, Freddy's, Blacker
- PAPA JOHN'S, Sencilar, Jack in the Box, Pizza Hut, O'Reilly AUTO PARTS

Logos for businesses near the site:

- Exxon, Dutch Bros, LES SCHWARZ, Aaron's, Starbucks, Dunkin' Donuts, NATURAL GROCERS, Kelly's Fried Chicken
- DOLLAR TREE, BASKIN ROBBINS, HARBOR FREIGHT, sam's club, SUBWAY, BIG LOTS!, Chevron, DQ
- AutoZone, Albertsons, TACO BELL, McDonald's, O'Reilly AUTO PARTS, Lowe's, PAPA MURPHY'S

Logos for businesses near the site:

- Buckle, Dick's, COTTON ON, PAPA MURPHY'S, HOT TOPIC, Adventure Race Parks, BOOT BARN
- TORRID, MOD PIZZA, ZUMIEZ, U-HAUL, jamba, cricket, sleep number, carter's
- Starbucks, DISCOUNT TIRE, LA QUINTA, H, Grease Monkey, AMERICAN EAGLE, Albertsons, Old Navy
- PACSUN, AEROPOSTALE, BURGER KING, BIG5, noodles, SHOE DEPT., Foot Locker, FAMOUS footwear
- Perkins, Cafe Rio, ROSS, Staples, BARNES & NOBLE
- Walmart, target, JCPenney, Dillard's, PETSMART, IHOP, Red Robin, BEST BUY
- FIVE GUYS, SUBWAY, COLD STONE, JOANN, Starbuck, Carl's Jr., ANYTIME FITNESS, TEXACO, ACE
- DOWNEAST, DOLLAR TREE, Michaels, DICK'S

UPDATED: 12.30.2025

THIS PROPERTY IS EXCLUSIVELY MARKETING BY TOK EASTERN IDAHO LLC DBA TOK COMMERCIAL
This information was obtained from sources believed reliable but cannot be guaranteed. Any opinions or estimates are used for example only.