

Prime Office Building

101 S Delaware
Mason City, IA 50401



8357 SF

**Multi-Tenant Office and
Retail Uses**

\$795,000



Established in Downtown Mason City, IA

Uniquely Positioned to serve planned development.

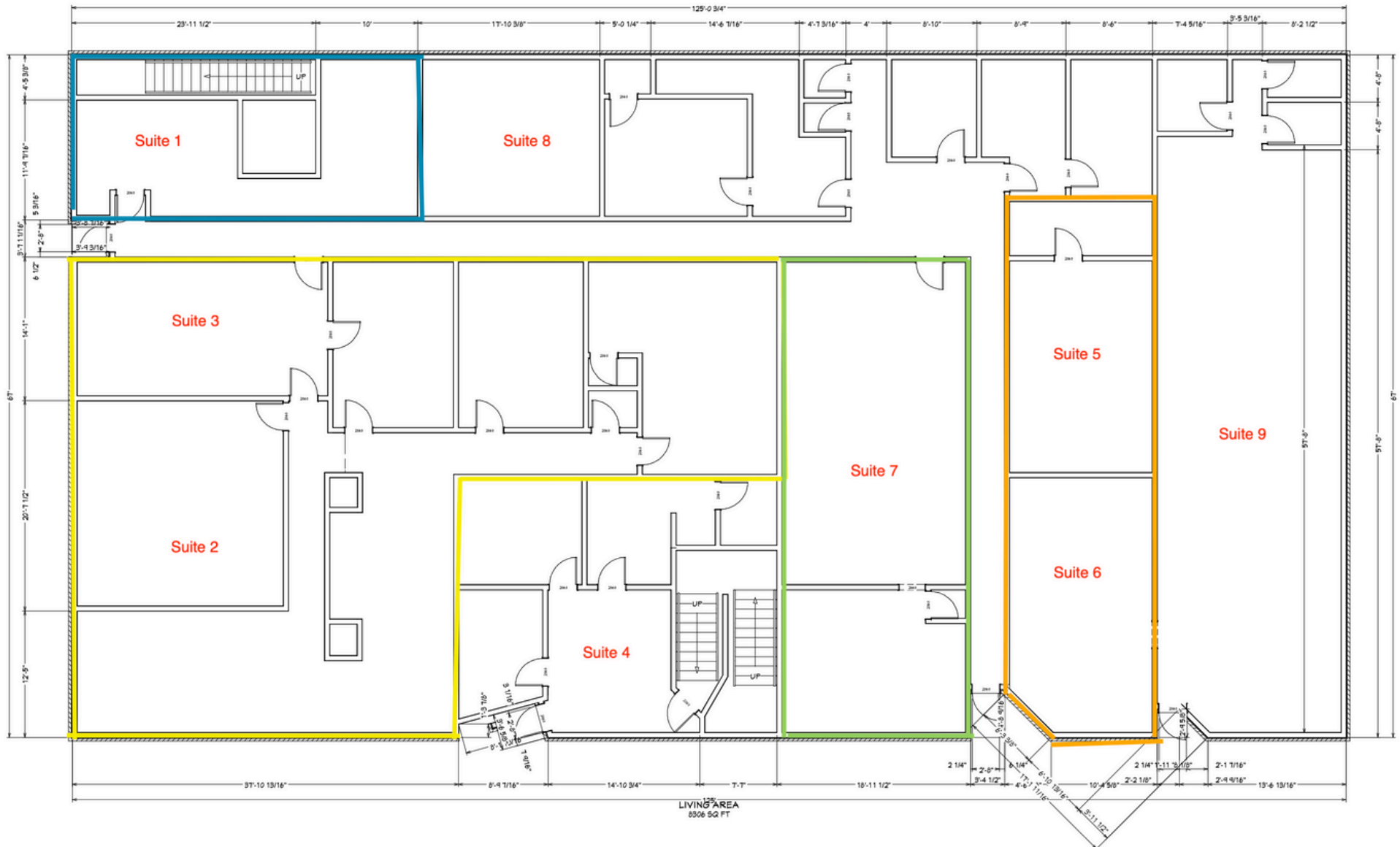
Brett Schoneman
641-425-1233

brett@schonemanrealtors.com
1819 4th St. SW Mason City, IA 641-423-0500


Schoneman,
REALTORS®

Floorplan

101 S Delaware
Mason City, IA 50401



101 S Delaware
Mason City. IA 50401



**101 S Delaware
Mason City. IA 50401**



Delaware Plaza sits just north of several new developments in downtown Mason City, IA.

New Hotel with Convention Center in former Southbridge Mall.

Increased traffic will fill retail spaces and increased amenity will increase office demand.

Mason City, IA 50401

101 S Delaware
Mason City, IA 50401



Mason City, Iowa is an award-winning community of 27,000 people directly between Minneapolis, MN and Des Moines, IA.

Known for the architectural legacy of Frank Lloyd Wright, the city has a rich history and a thriving downtown.

See more information at:

www.visitmasoncityiowa.com

