

# CEDAR CITY RETAIL CENTER

FOR SALE



## PROPERTY DETAILS

Auto Mall Drive, Cedar City, UT 84721

- Land For Sale
- Five (5) Parcels = 33.54 Total Acres
- New Retail Development
- Located off I-15 Entrance | Exit Ramps (East)
- Great Location for Big Box, Fuel, Hotel, Medical, Financial, Fast Food, Auto Dealership, and Many Other Options!
- Contact Listing Agent for Additional Information and Price Guidance

### NEW NEARBY RETAILERS



## 2025 DEMOS



### EST. POPULATION

CEDAR CITY » **40,315**  
IRON COUNTY » **66,145**



### EST. HOUSEHOLDS

CEDAR CITY » **14,057**  
IRON COUNTY » **22,766**



### EST. AVERAGE HH INCOME

CEDAR CITY » **\$94,656**  
IRON COUNTY » **\$94,847**

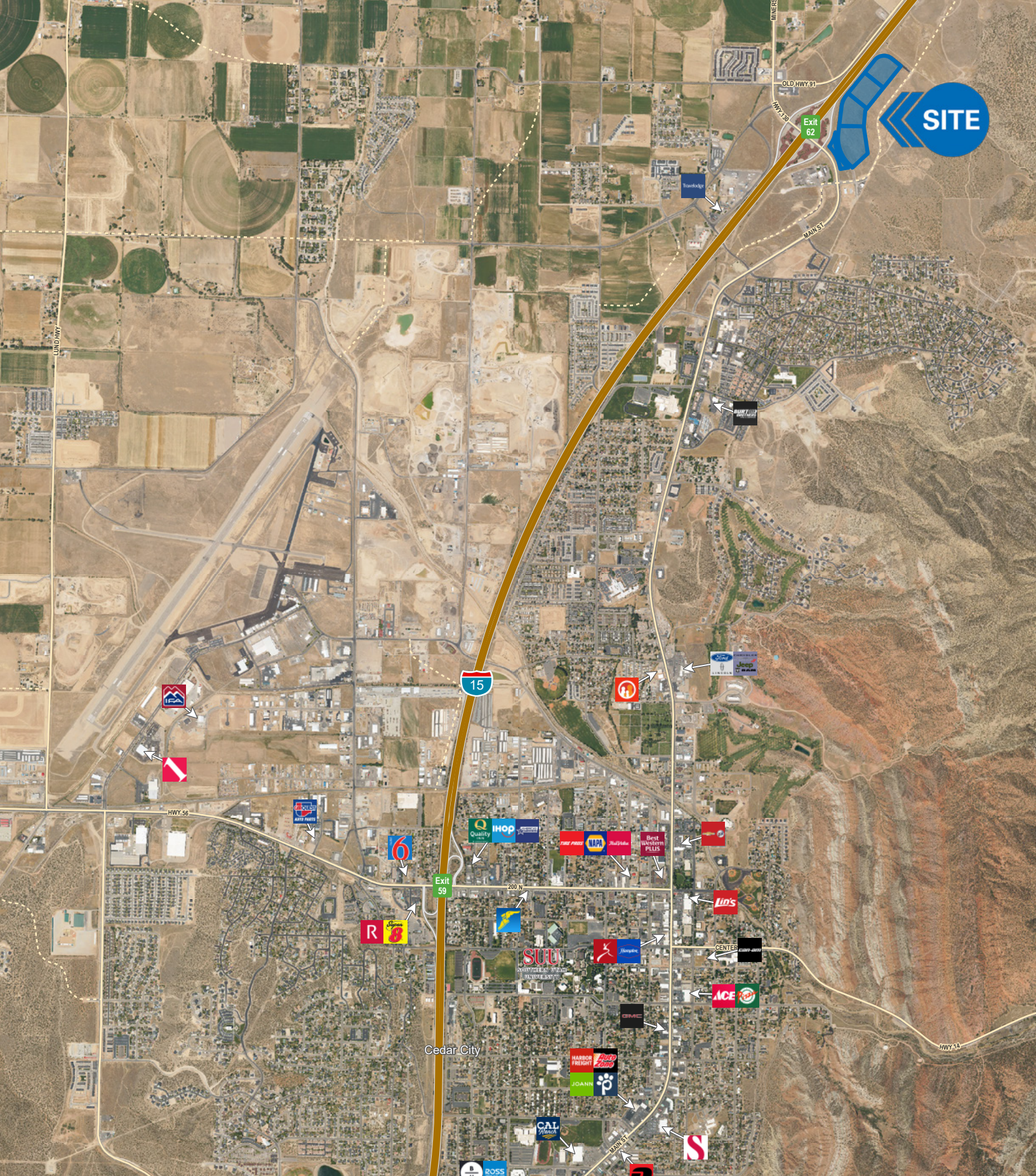
**NEWMARK**

**MOUNTAIN WEST**

**ADAM LEWIS**  
al@newmarkmw.com  
direct 801.746.4708  
[View Profile](#)

**SCOTT BRADY**  
sbrady@newmarkmw.com  
direct 801.456.8804  
[View Profile](#)

**FULL SERVICE  
COMMERCIAL REAL ESTATE**  
312 East South Temple  
Salt Lake City, Utah 84111  
Office 801.456.8800  
[www.newmarkmw.com](http://www.newmarkmw.com)



**ADAM LEWIS**  
 al@newmarkmw.com  
 direct 801.746.4708  
[View Profile](#)

**SCOTT BRADY**  
 sbrady@newmarkmw.com  
 direct 801.456.8804  
[View Profile](#)

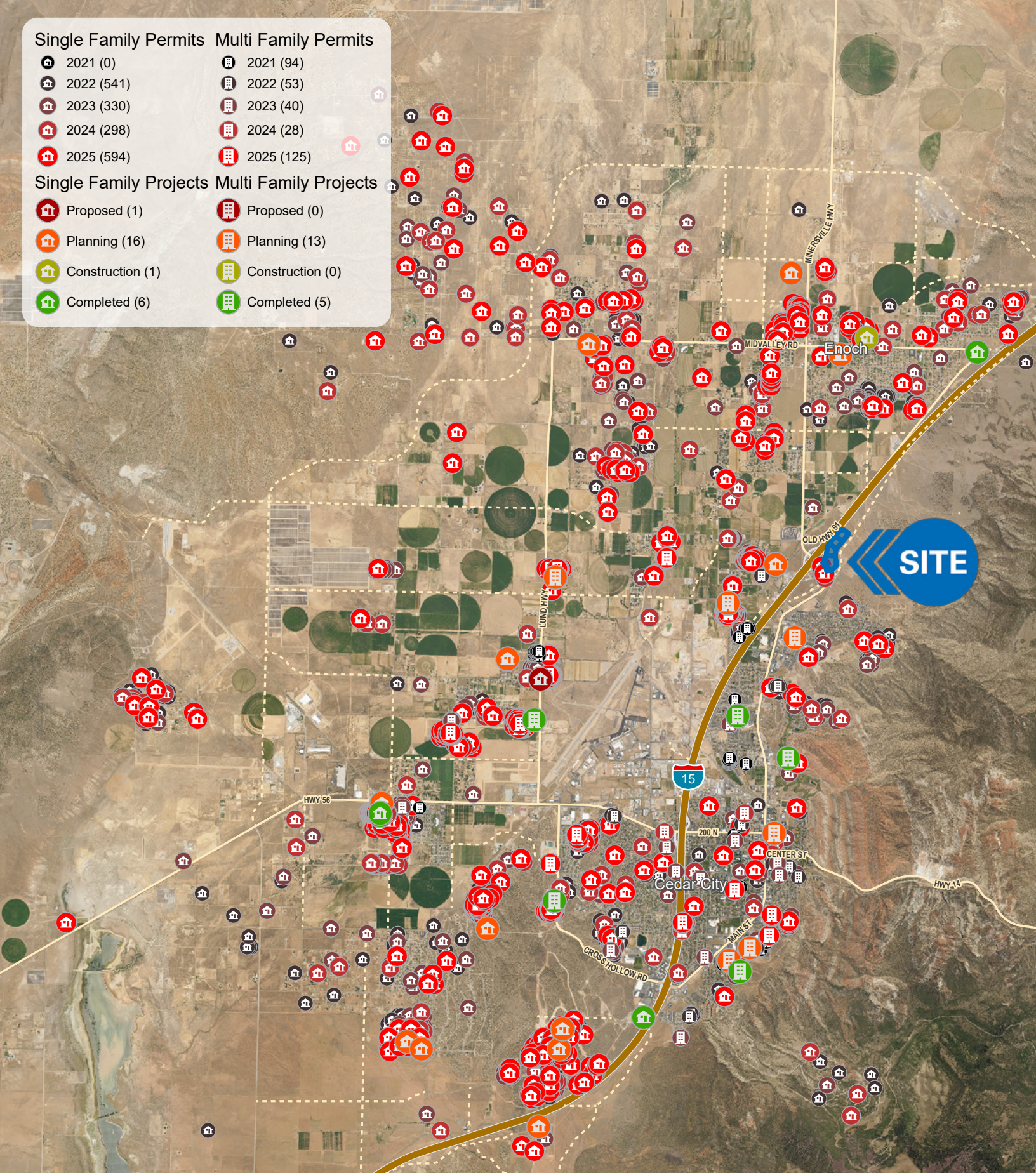
**FULL SERVICE  
 COMMERCIAL REAL ESTATE**  
 312 East South Temple  
 Salt Lake City, Utah 84111  
 Office 801.456.8800  
[www.newmarkmw.com](http://www.newmarkmw.com)

**Single Family Permits**    **Multi Family Permits**

-  2021 (0)
-  2022 (541)
-  2023 (330)
-  2024 (298)
-  2025 (594)
-  2021 (94)
-  2022 (53)
-  2023 (40)
-  2024 (28)
-  2025 (125)

**Single Family Projects**    **Multi Family Projects**

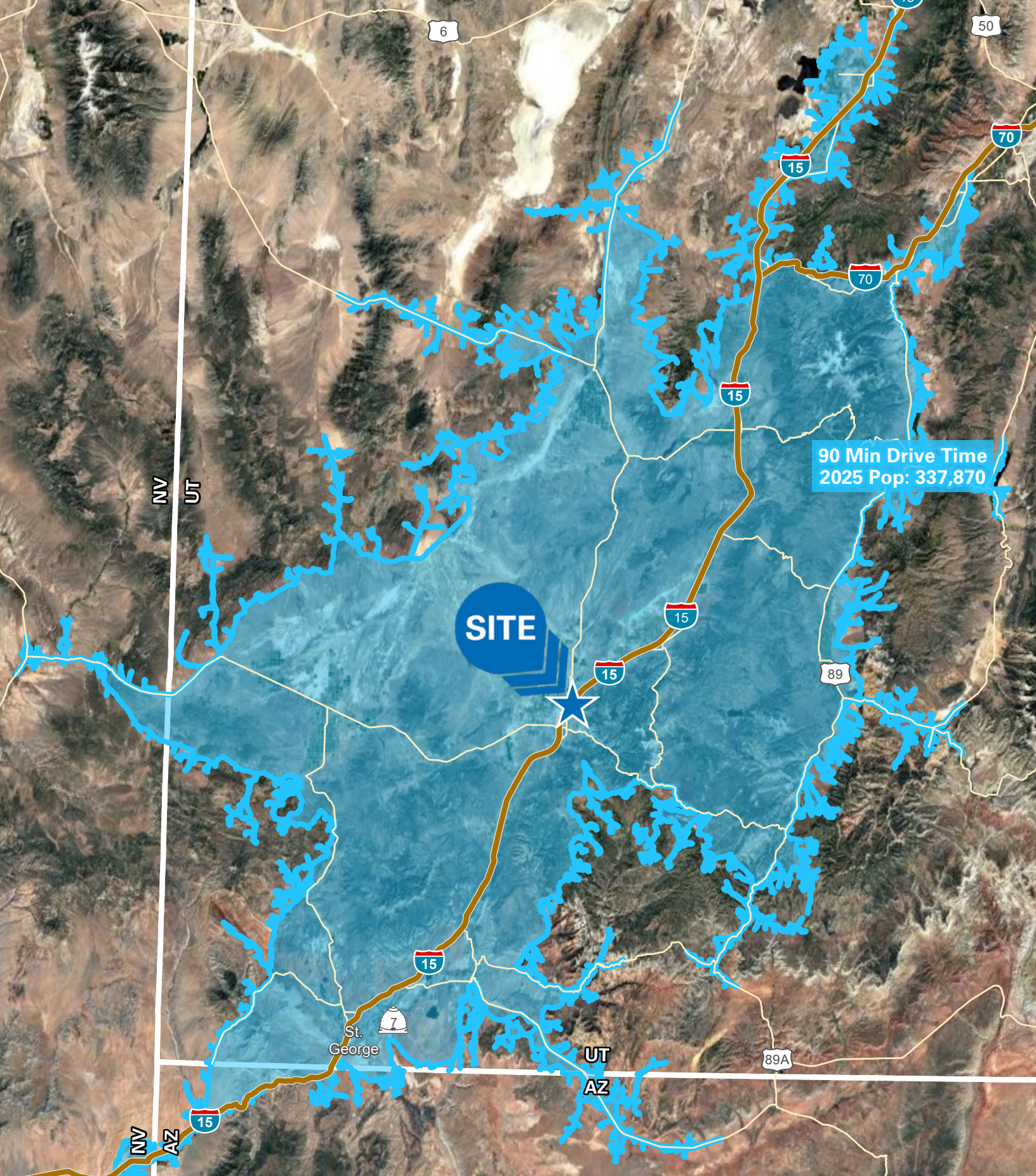
-  Proposed (1)
-  Planning (16)
-  Construction (1)
-  Completed (6)
-  Proposed (0)
-  Planning (13)
-  Construction (0)
-  Completed (5)



**ADAM LEWIS**  
 al@newmarkmw.com  
 direct 801.746.4708  
[View Profile](#)

**SCOTT BRADY**  
 sbrady@newmarkmw.com  
 direct 801.456.8804  
[View Profile](#)

**FULL SERVICE  
 COMMERCIAL REAL ESTATE**  
 312 East South Temple  
 Salt Lake City, Utah 84111  
 Office 801.456.8800  
[www.newmarkmw.com](http://www.newmarkmw.com)



90 Min Drive Time  
2025 Pop: 337,870

**SITE**

St. George

**NEWMARK**  
MOUNTAIN WEST

**ADAM LEWIS**  
al@newmarkmw.com  
direct 801.746.4708  
[View Profile](#)

**SCOTT BRADY**  
sbrady@newmarkmw.com  
direct 801.456.8804  
[View Profile](#)

**FULL SERVICE  
COMMERCIAL REAL ESTATE**  
312 East South Temple  
Salt Lake City, Utah 84111  
Office 801.456.8800  
[www.newmarkmw.com](http://www.newmarkmw.com)