

±26,967 UP TO ±81,569 SF
R&D BUILDING - IMMEDIATELY AVAILABLE
FULL-BUILDING HQ OPPORTUNITY



130-150 SHORELINE DRIVE
REDWOOD CITY, CA

CBRE

GI PARTNERS

BUILDING SPECIFICATIONS



Total Availability: ±81,569 SF
130 Shoreline: ±26,967 SF
150 Shoreline: ±54,602 SF



Clear Height: 11' - 24'



Grade Level Doors: 2



Parking: 3.20 / 1,000 SF



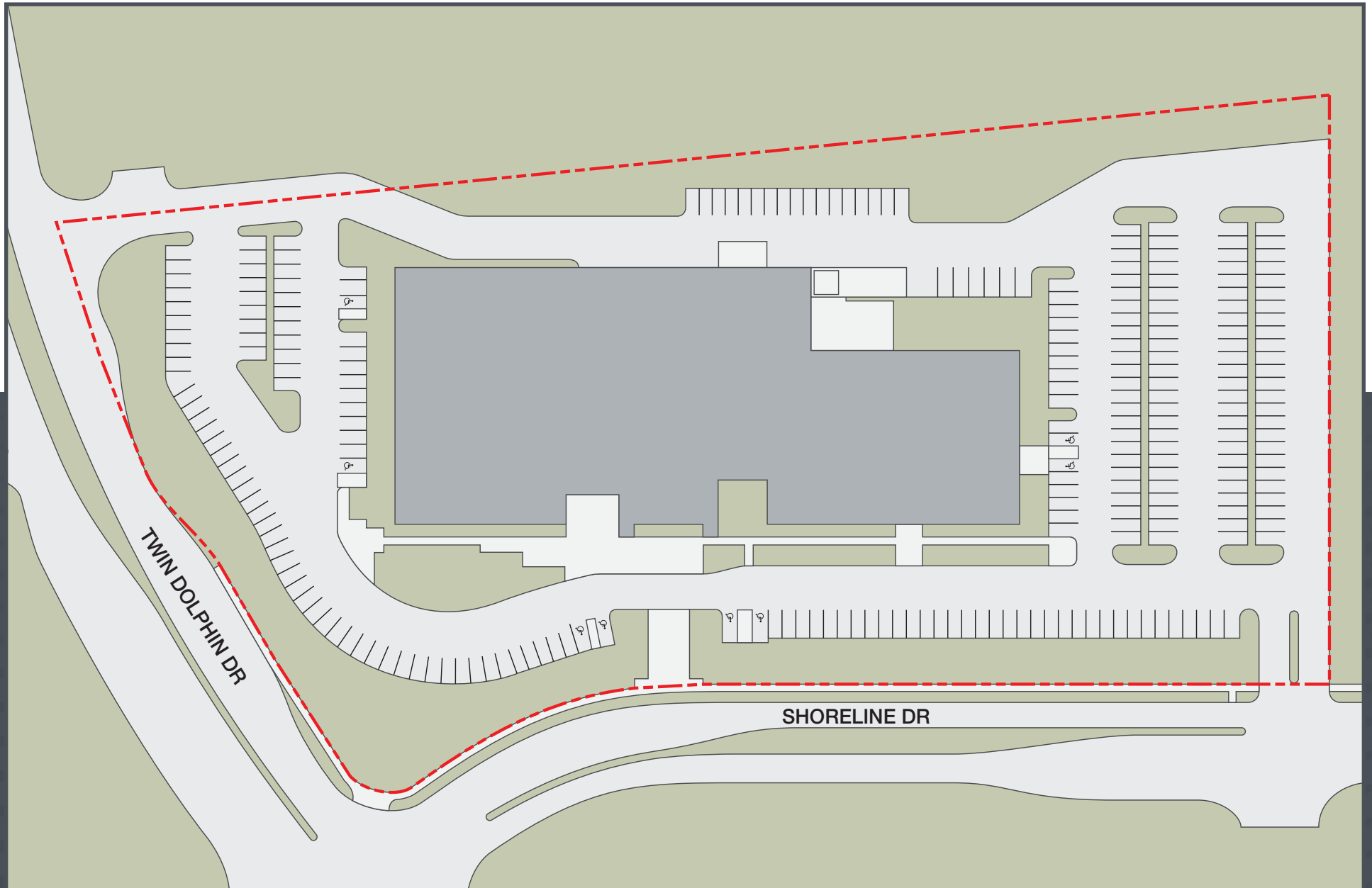
Power: 2000 amps w/ 60 KW emergency generator



Plug-and-play turnkey office/lab space available



SITE PLAN



FLOOR PLAN

1ST Floor

- » Open / Flexible Floorplate
- » 60 KW Backup Generator
- » All Hands / Break Room
- » 2 Grade-Level Doors

150 Shoreline



Lab/Production Space

Warehouse

Office

FLOOR PLAN

2nd Floor

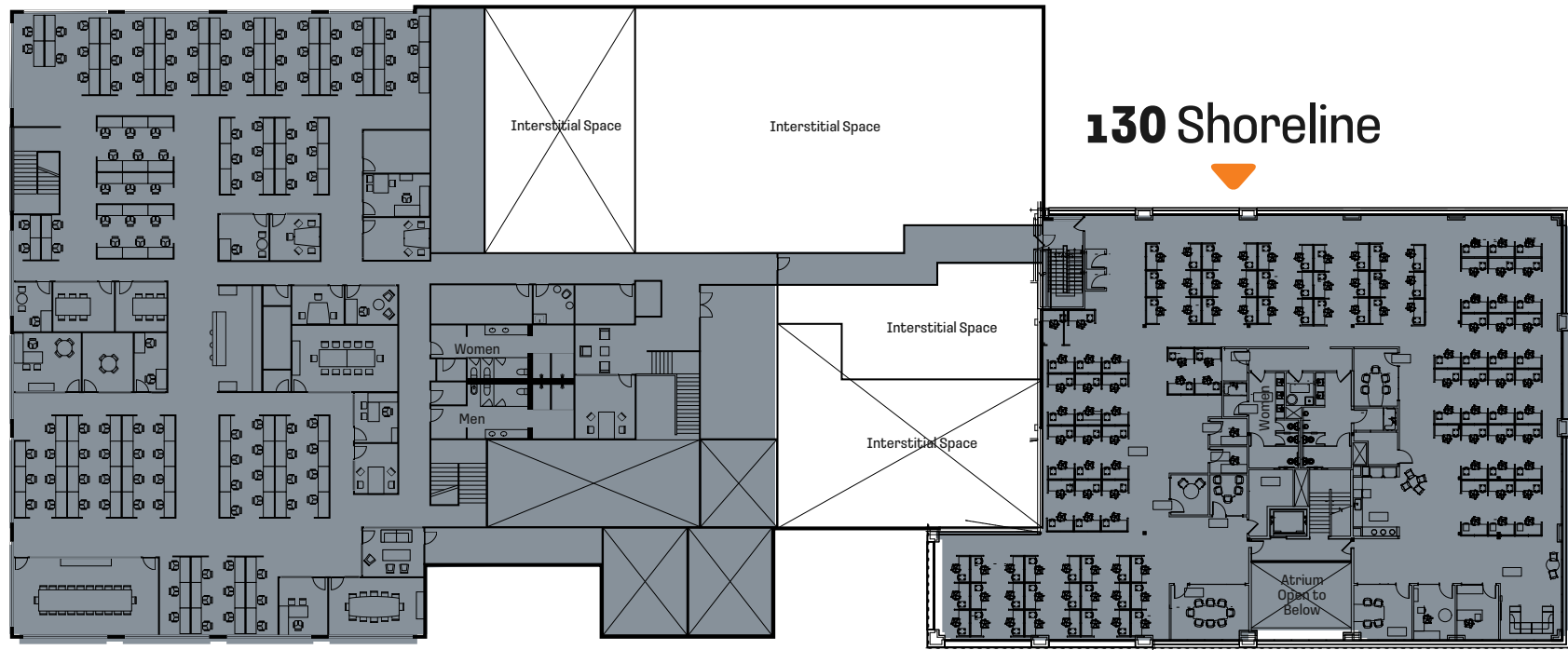
150 SHORELINE

- » 125 Workstations
- » 18 Meeting/Huddle Rooms
- » 6 Conference Rooms
- » Break Area

130 SHORELINE

- » 108 Workstations
- » 2 Meeting/Huddle Rooms
- » 7 Conference Rooms
- » Break Area

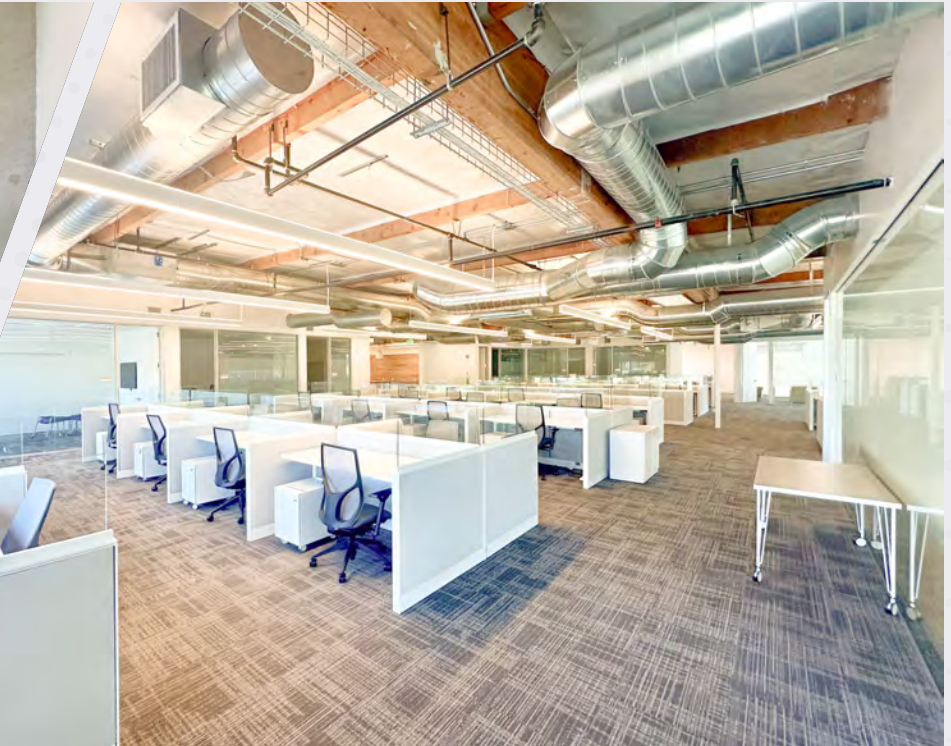
150 Shoreline



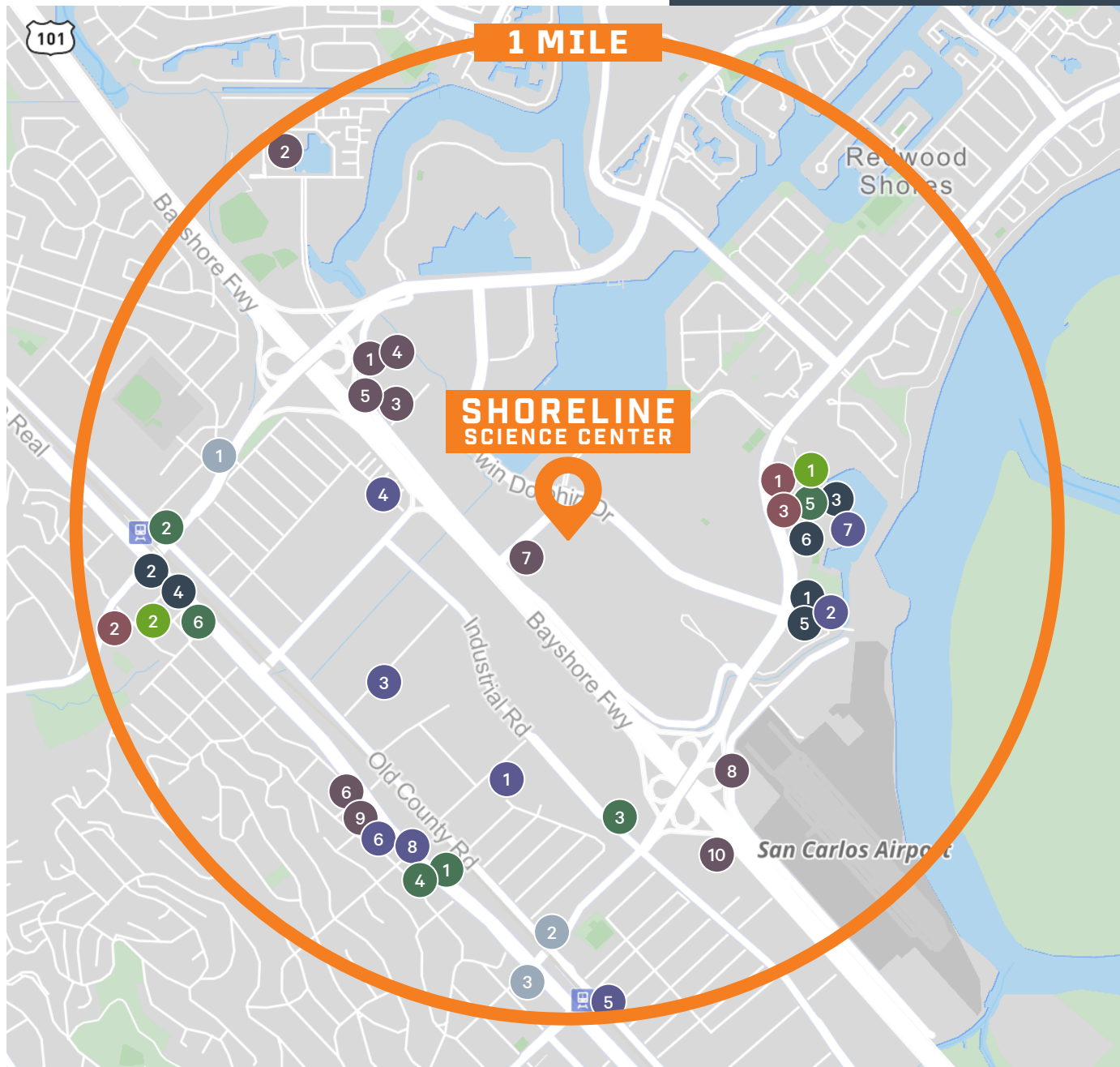
130 Shoreline

■ Office

PROPERTY PHOTOS



AMENITIES MAP



Restaurant - Fast Casual

- 1 Local Kitchens
- 2 Doghaus
- 3 Mendocino Farms
- 4 Panda Express
- 5 Proposition Chicken
- 6 Chipotle Mexican Grill

Hotels

- 1 Studio 6
- 2 Hyatt House
- 3 Extended Stay America
- 4 Motel 6
- 5 Homewood Suites by Hilton
- 6 Holiday Inn Express
- 7 SpringHill Suites by Marriott
- 8 Fairfield Inn & Suites by Marriott
- 9 Hyatt Place
- 10 Residence Inn by Marriott

Convenience Store

- 1 ampm
- 2 7-Eleven US
- 3 Circle K Stores

Gyms + Fitness Facilities

- 1 CrossFit
- 2 The Bay Club
- 3 CrossFit

- 4 Shoot360
- 5 barre3
- 6 Club Pilates
- 7 Orangetheory Fitness
- 8 My Gym Children's Fitness Centers

Restaurant - QSR/Fast Food

- 1 Taco Bell
- 2 Wendy's
- 3 In-N-Out Burger
- 4 McDonald's US
- 5 Five Guys
- 6 Sourdough & Co.

Banks + Financial Services

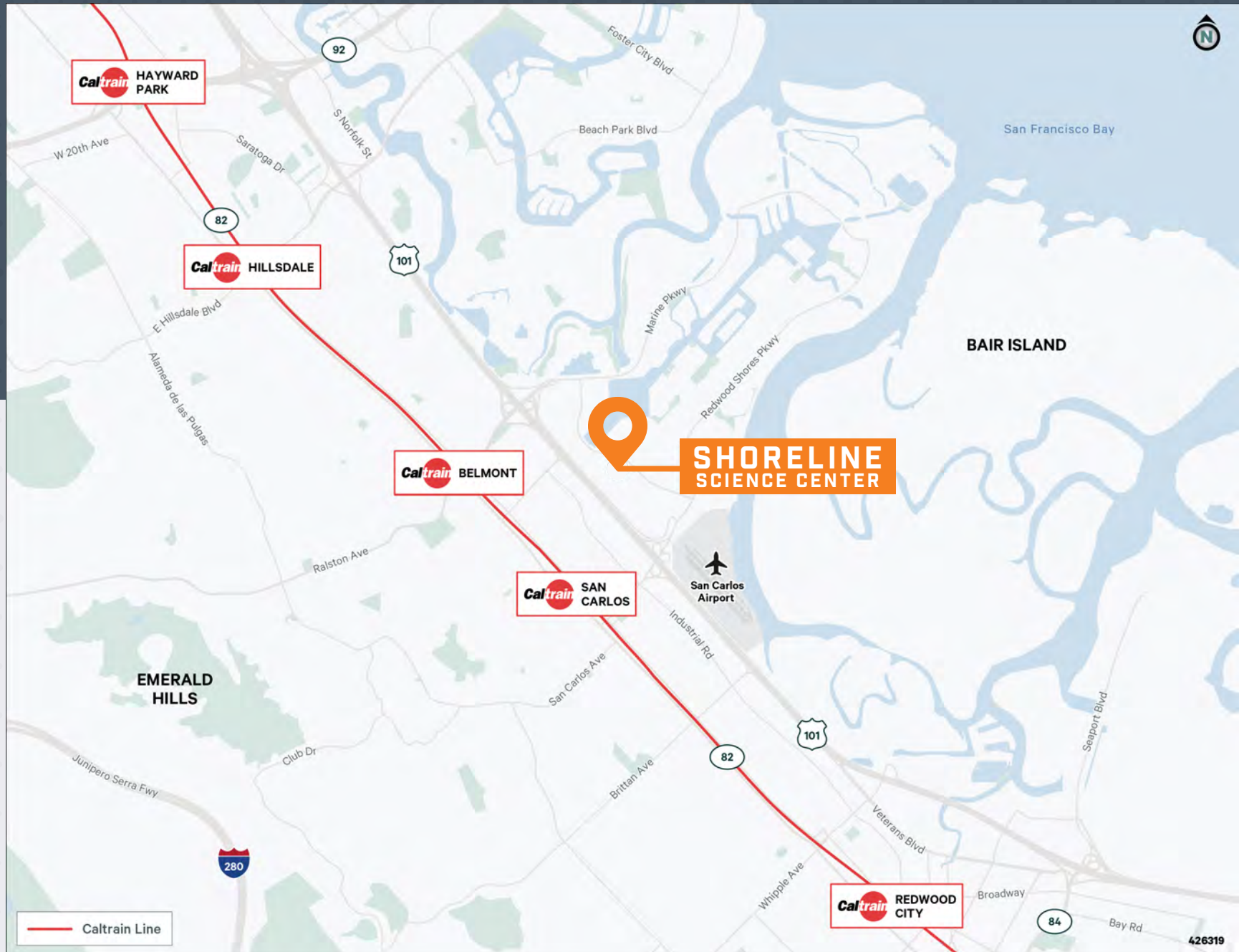
- 1 Chase
- 2 Wells Fargo
- 3 Bank of America

Grocery

- 1 Nob Hill Foods
- 2 Safeway

Reference Points

TRANSIT MAP



**130-150 SHORELINE DRIVE
REDWOOD CITY, CA**



GREGG DOMANICO

Vice Chairman

+1 415 215 5218

gregg.domanico@cbre.com

Lic. 00996779

MICHAEL DOMANICO

Senior Vice President

+1 650 430 1464

michael.domanico@cbre.com

Lic. 01944774

GIO HAUGHTON

Senior Associate

+1 650 387 1197

gio.haughton@cbre.com

Lic. 02107010

GI PARTNERS

CBRE

© 2025 CBRE, Inc. All rights reserved. This information has been obtained from sources believed reliable but has not been verified for accuracy or completeness. CBRE, Inc. makes no guarantee, representation or warranty and accepts no responsibility or liability as to the accuracy, completeness, or reliability of the information contained herein. You should conduct a careful, independent investigation of the property and verify all information. Any reliance on this information is solely at your own risk. CBRE and the CBRE logo are service marks of CBRE, Inc. All other marks displayed on this document are the property of their respective owners, and the use of such marks does not imply any affiliation with or endorsement of CBRE. Photos herein are the property of their respective owners. Use of these images without the express written consent of the owner is prohibited.