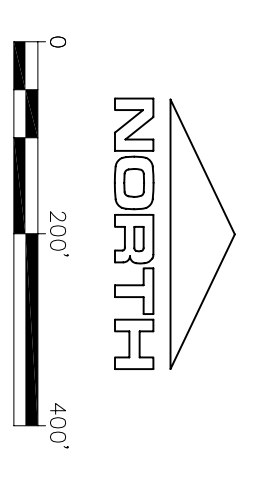
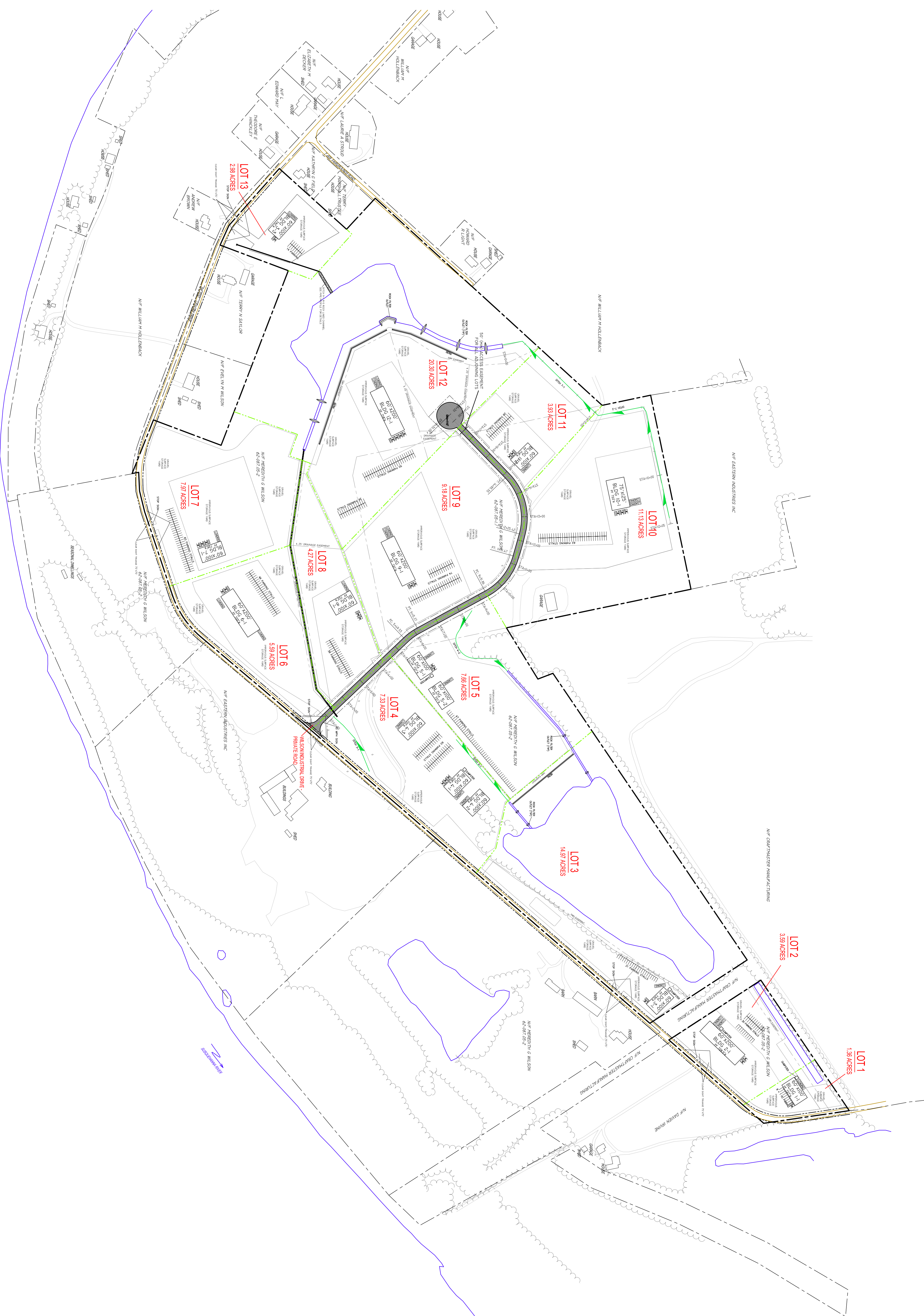



LEGEND

- Property Line
- Proposed Access Line
- Lot Lines
- Proposed Contour
- Existing Contour
- Property Center
- Property Monumentation
- Electric Line (Ground)
- Telephone Line (Ground)
- Underground Electric Line
- Underground Telephone Line
- Water Line
- Gas Line
- Light
- Utility Pole
- Manhole
- Tot Pole
- Soil Boundary
- Soil Type
- AGB
- Loading Space - 12' x 12'
- Handicapped Parking Space
- Scale



A	Rev No: 0	PROJECT: Wilson Industrial Park Endless Mountains Land Management, Inc. Wysox Township, Bradford County, Pennsylvania	 DIETZ-GOURLEY CONSULTING, LLC 1215 Deerfield Drive State College, PA 16803 P: 814 278 7596 F: 814 278 7795 www.DGengr.com	PROJECT NO.: 10.0629	FILE 110718_Wilson_Planning.dwg REV. DATE BY COMMENT
	Date: 1/31/2012	TITLE: Site Plan - Traffic Study		DRAWN BY: CMW 10/10/10	
Sheet No:				CHKD BY: TSG //	
				TIMOTHY S. GOURLEY, P.E.	

C:\Users\jgourley\OneDrive\Documents\110718_Wilson_Planning.dwg, 1/31/2012 11:02:02 AM, 10.0629