

**RELIGIOUS FACILITY &
HOUSE FOR SALE
1900 & 1912 Panola Rd
Lithonia GA 30058**



COMMERCIAL
ATLANTA CLASSIC

Phyllis Minter

770.256.8168

pminter@kwcommercial.com



PROPERTY OVERVIEW

- o +/- 5.03 Acres
- o Dekalb County
- o Parcel ID: 16 038 05 001, 16 038 05 002 & 16 038 05 011
- o Zoned R-100 ([Link to Code](#))
- o +/- 274 ft Frontage on Panola Rd
- o 3 Bedroom House and Religious Facility on Property
- o Less than 2 miles from Covington Hwy & I-20
- o Conveniently located less than 6 miles from I-285.

Offering Price - \$750,000





PROPERTY PHOTOS





PROPERTY PHOTOS





PROPERTY PHOTOS





PROPERTY PHOTOS



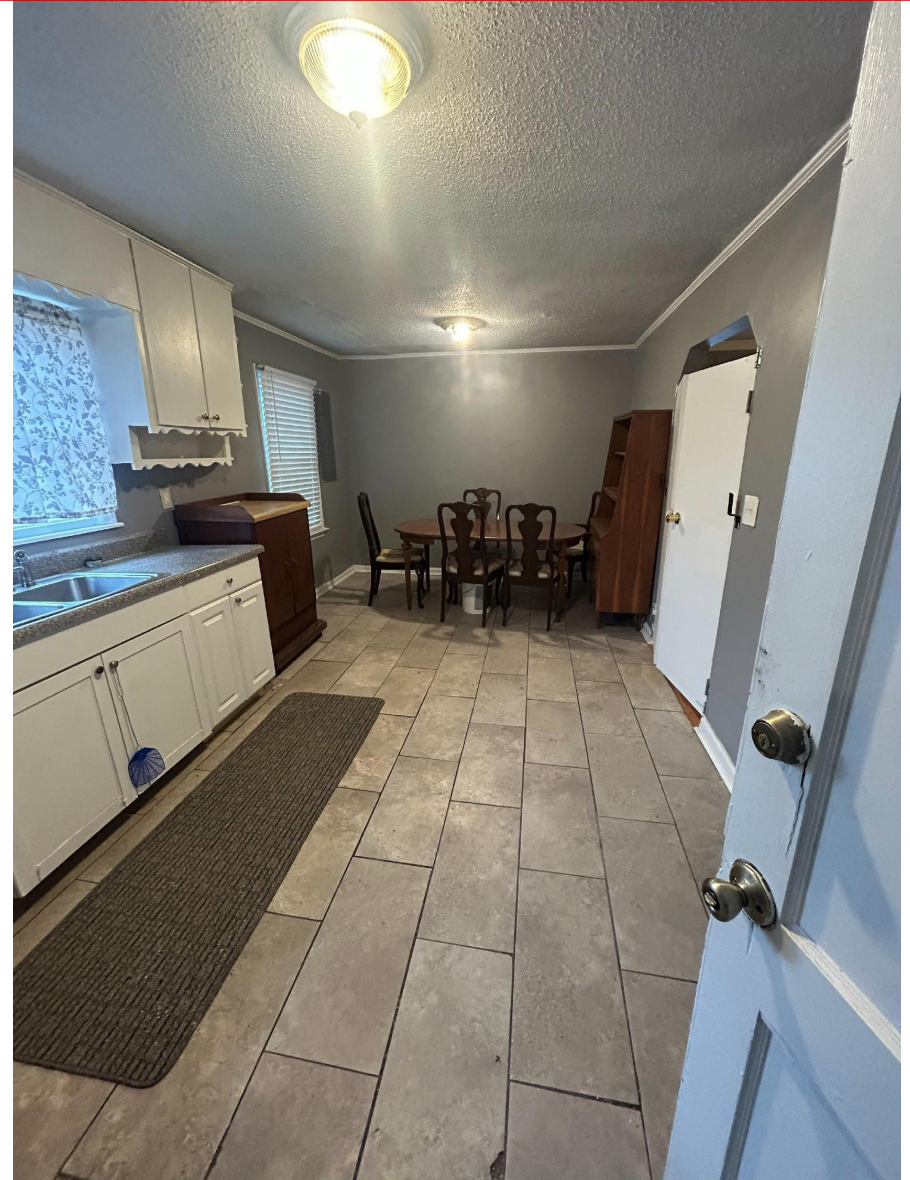


PROPERTY PHOTOS





PROPERTY PHOTOS





PROPERTY PHOTOS



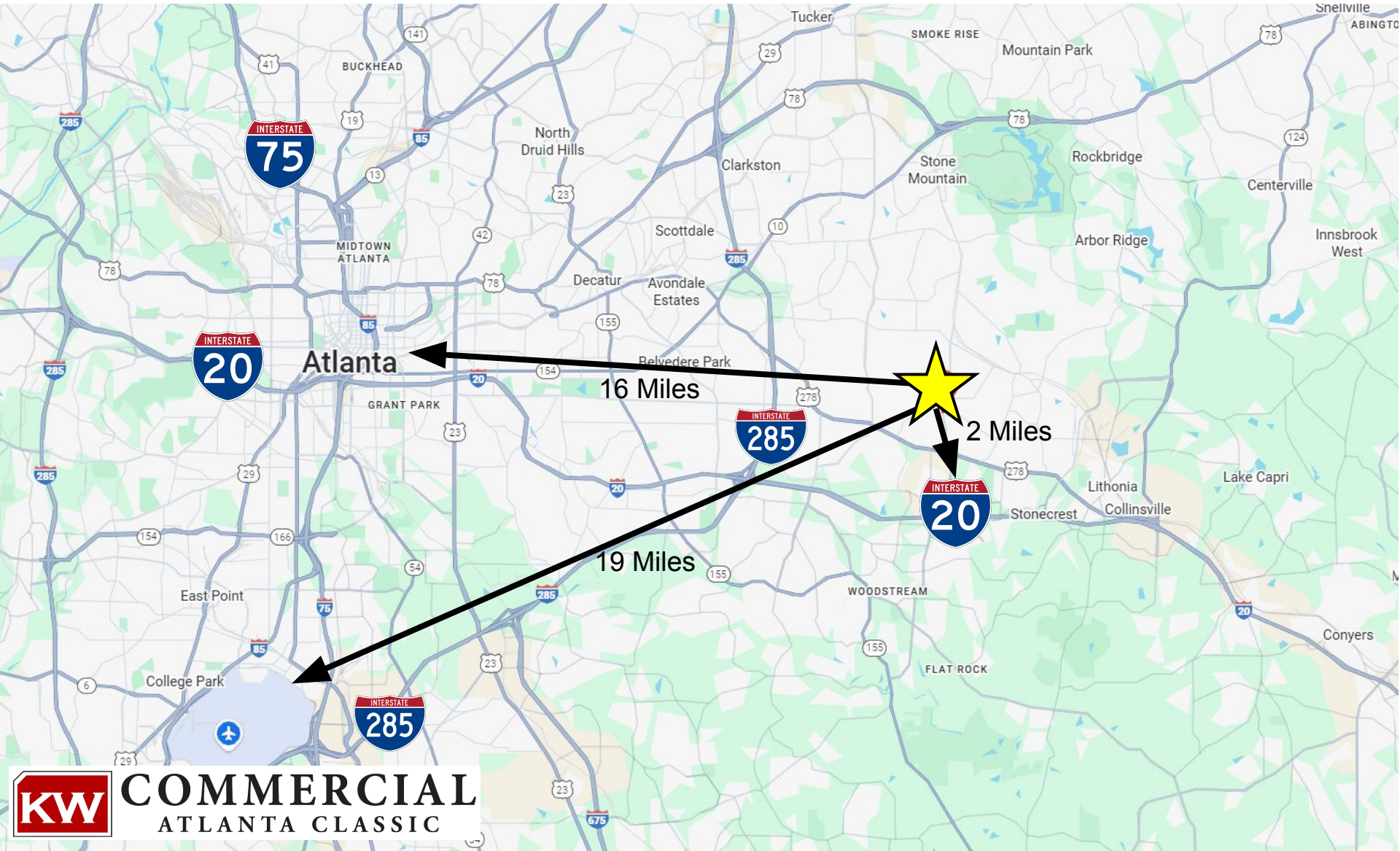


SUBMARKET AERIAL





DISTANCE MAP





Phyllis Minter

Associate Broker

P.A. Minter Associates power by
KW Commercial Atlanta Classic

770.256.8168

pminter@kwcommerical.com

