



FOR LEASE

AURORA INDUSTRIAL

2500 WALNUT STREET, ROSEVILLE, MN

JOHN RYDEN

+1 952 924 4641

john.ryden@cbre.com

MATT OELSCHLAGER

+1 952 924 4848

matt.oelschlager@cbre.com

MIKE BOWEN

+1 952 924 4885

mike.bowen@cbre.com

MAXX SCHINDEL

+1 218 232 6901

maxx.schindel@cbre.com

CBRE



FOR LEASE

AURORA INDUSTRIAL

2500 WALNUT STREET. ROSEVILLE, MN

PROPERTY FEATURES

- Front loaded bulk distribution warehouse
- ESFR fire protection
- Three blocks to I-35W via Industrial Blvd
- Rail service by MN Commercial
- Zoned I-2

NET RENTAL RATES

- Negotiable

2025 CAM & REAL ESTATE TAXES

- \$2.01 PSF CAM
\$3.05 PSF Taxes
\$5.06 PSF Total

PROPERTY SPECIFICATIONS

TOTAL BUILDING SF

130,498 SF on +/- 6 acres

AVAILABLE SPACE

20,314 SF Total
459 SF Office
19,855 SF Warehouse

1 unisex restroom

CLEAR HEIGHT

28'

LOADING

7 Dock doors with levelers and seals
1 Rail door

BUILDING DEPTH

150'

PARKING

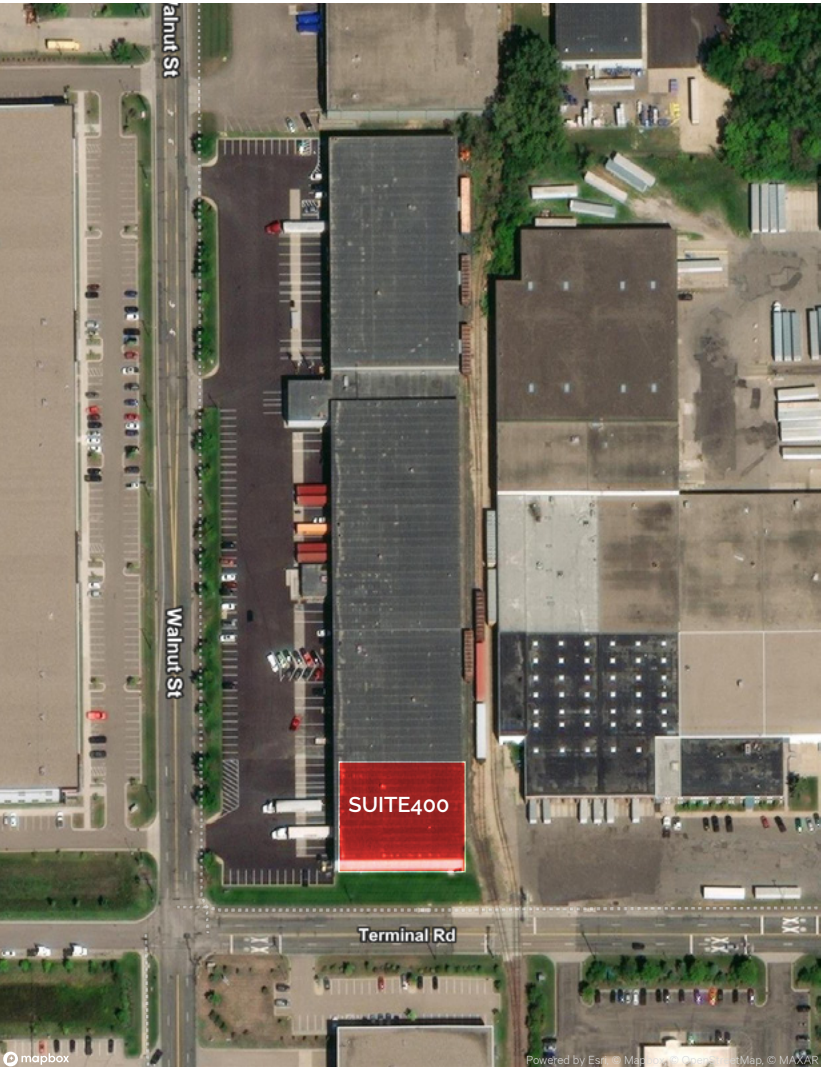
.6/1000

COLUMN SPACING

33' x 37'

SPRINKLERED

ESFR

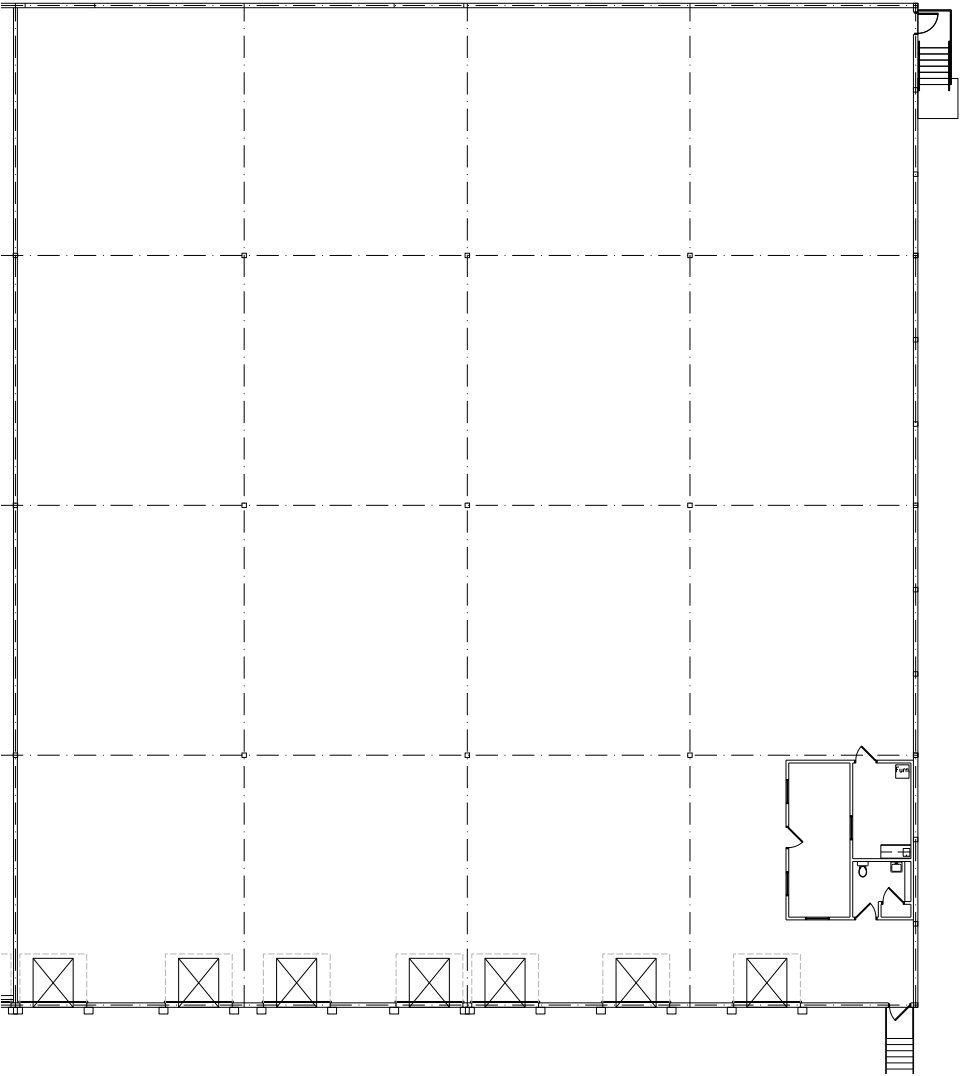


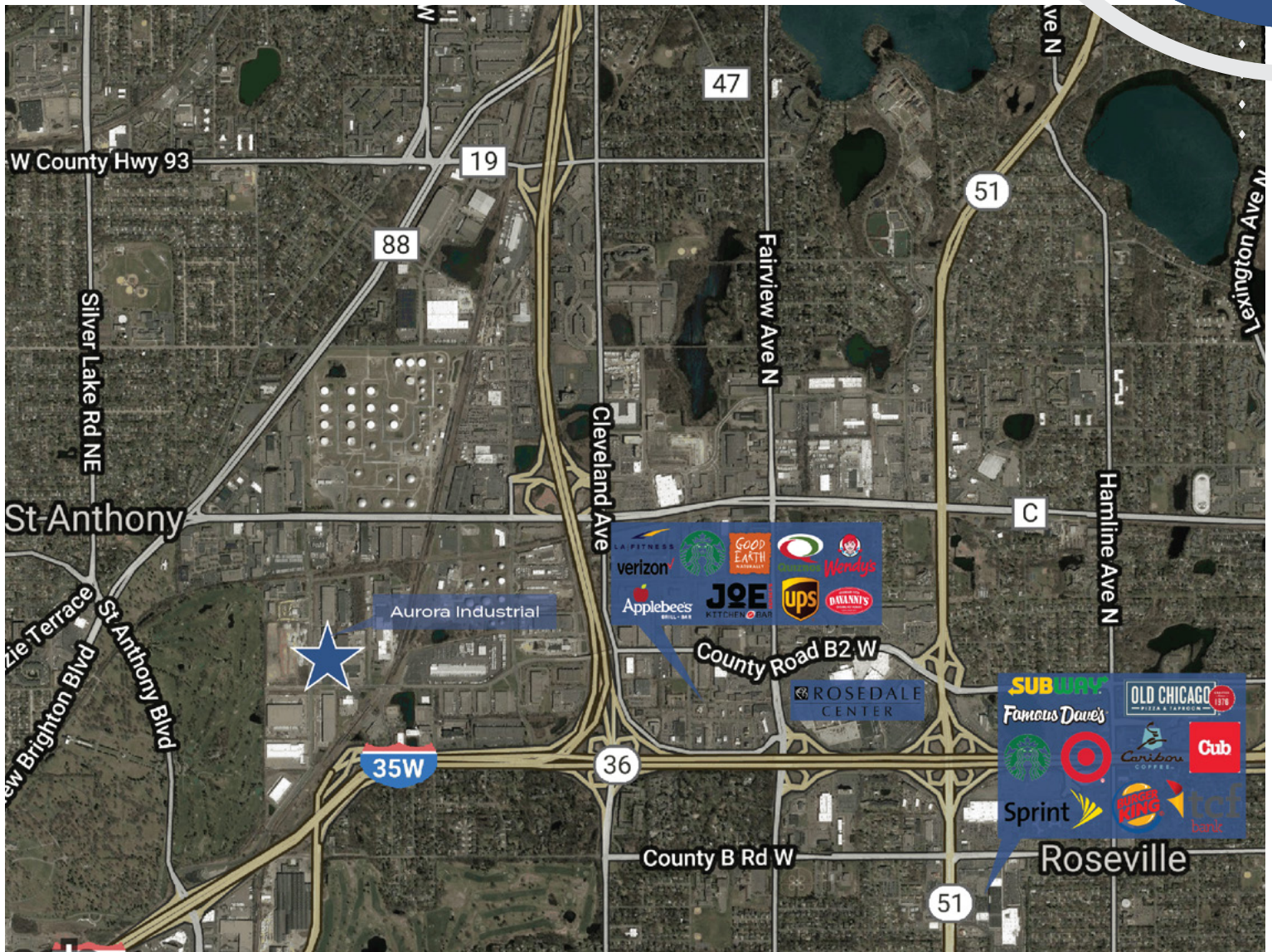
SUITE 400

AVAILABLE 1/1/26

20,314 SF Total
459 SF Office
19,855 SF Warehouse

7 Dock doors with levelers and seals
1 Rail door
1 unisex restroom
400A, 480V, 3P





FOR LEASE

AURORA INDUSTRIAL

2500 WALNUT STREET, ROSEVILLE, MN

CONTACT US

JOHN RYDEN

+1 952 924 4641

john.ryden@cbre.com

MATT OELSCHLAGER

+1 952 924 4848

matt.oelschlager@cbre.com

MIKE BOWEN

+1 952 924 4885

mike.bowen@cbre.com

MAXX SCHINDEL

+1 218 232 6901

maxx.schindel@cbre.com

CBRE

Capital Partners

© 2024 CBRE, Inc. All rights reserved. This information has been obtained from sources believed reliable but has not been verified for accuracy or completeness. CBRE, Inc. makes no guarantee, representation or warranty and accepts no responsibility or liability as to the accuracy, completeness, or reliability of the information contained herein. You should conduct a careful, independent investigation of the property and verify all information. Any reliance on this information is solely at your own risk. Photos herein are the property of their respective owners. Use of these images without the express written consent of the owner is prohibited.