

# Hermitage Rd Development

6.12± Acres Available for Development

Parcel # 11-145-082  
North Hermitage Road  
Hermitage, PA 16148  
[Map Location](#)





Property Information

- + 6.12± total acres available for development
  - 2.92± acre site (Available)
  - 1.60± acre site (Available)
  - 1.60± acre site (Available)
- + Located at a signalized intersection on North Hermitage Road
  - Directly across from Walmart Supercenter
- + Area retailers include Petco, Harbor Freight Tools, Golden Corral, Aspen Dental, Sally Beauty, GNC, and Dairy Queen
- + Parcel adjacent to additional retail development (separate ownership)

2024 Demographics	3 MILES	5 MILES	10 MILES
Population	26,256	44,986	79,067
Daytime Population	26,537	47,470	76,320
Households	11,892	20,450	35,354
Average Household Income	\$85,458	\$77,903	\$80,985

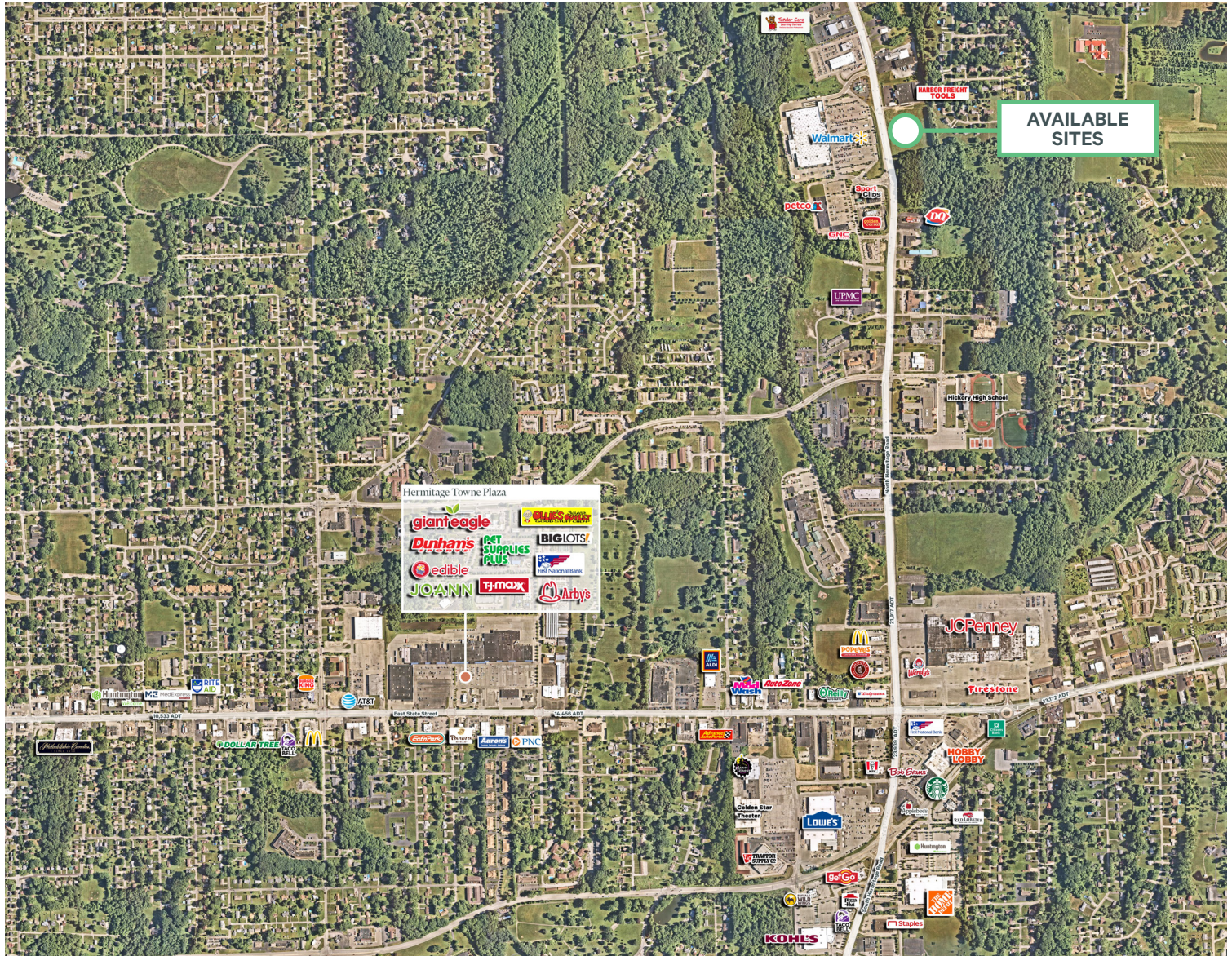


Property lines are approximate



Property lines are approximate





## Contact Us

### Robert Gold, CCIM

First Vice President  
+1 412 316 2397  
robert.gold@cbre.com

### Jake Gold

Senior Associate  
+1 412 394 9830  
jake.gold@cbre.com

© 2025 CBRE, Inc. All rights reserved. This information has been obtained from sources believed reliable but has not been verified for accuracy or completeness. CBRE, Inc. makes no guarantee, representation or warranty and accepts no responsibility or liability as to the accuracy, completeness, or reliability of the information contained herein. You should conduct a careful, independent investigation of the property and verify all information. Any reliance on this information is solely at your own risk. CBRE and the CBRE logo are service marks of CBRE, Inc. All other marks displayed on this document are the property of their respective owners, and the use of such marks does not imply any affiliation with or endorsement of CBRE. Photos herein are the property of their respective owners. Use of these images without the express written consent of the owner is prohibited.