

155 FIFTH AVENUE

FLATIRON

Welcome to 155 5th Avenue, a prime office location in the Flatiron district. Also known as The Scribner Building, this property was designed by Ernest Flagg in the Beaux Arts style and completed in 1893 as the corporate headquarters of Charles Scribner's Sons publishing company.

The building offers a perfect blend of functionality and atmosphere, boasting an attended lobby, direct elevator access, brand-new installations, and bright, spacious offices featuring high ceilings and great views. Every detail is designed to enhance your workspace experience.

Additionally, transportation options abound, with easy access to all major subway lines and bus routes, making commuting a breeze for you and your team.

Flatiron is renowned for its innovation and creativity, making it a top choice for businesses seeking to thrive in the heart of New York City.

Premises Entire Third Floor

Square Footage 5,200 RSF

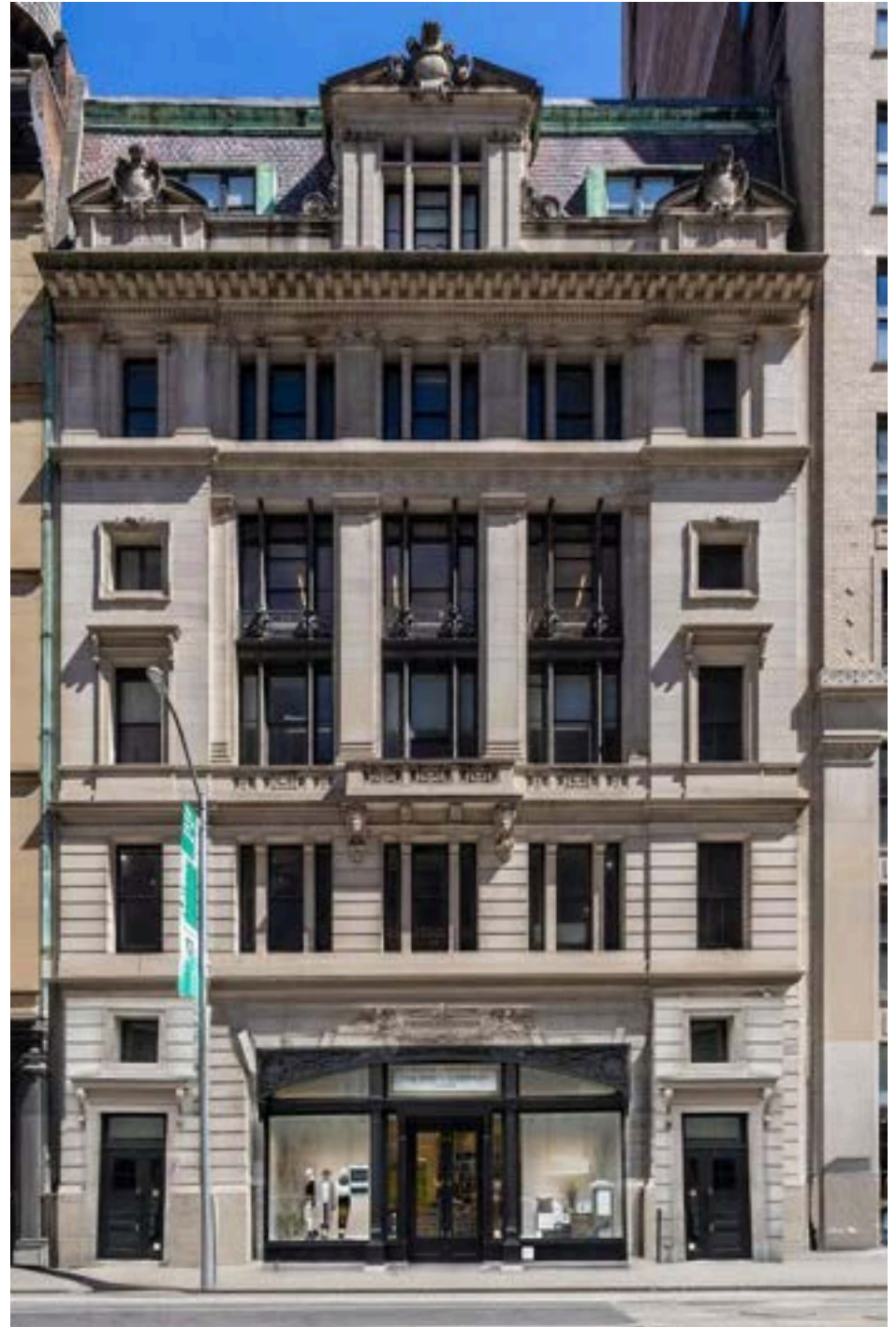
Ceiling Heights 12 Feet

Lease Terms Negotiable

Possession Immediate

Nearby Attractions Flatiron Building, Madison Square Park, Eataly, Cote, Coqodaq, Gramercy Tavern, Fotografiska Museum.

Nearby Transportation











155 FIFTH AVENUE

FLOOR PLANS

Premises

Entire Third Floor

Square Footage

5,200 RSF

Ceiling Heights

12 Feet

Space Highlights

- Brand New Pre-Build Installation
- Two Glass-Fronted Offices
- One Conference Room
- New Wood Floors
- Double-Sided Exposures
- Open Pantry
- Private Elevator Access
- Attended Lobby



THIS INFORMATION HAS BEEN SECURED BY PLATINUM PROPERTIES FROM SOURCES BELIEVED TO BE RELIABLE. IT IS NOT GUARANTEED, HOWEVER, AND SHOULD BE VERIFIED PRIOR TO CONSUMMATING ANY TRANSACTION. NO REPRESENTATIONS ARE EXPRESSED OR IMPLIED.



155 FIFTH AVENUE

NEIGHBORHOOD MAP

