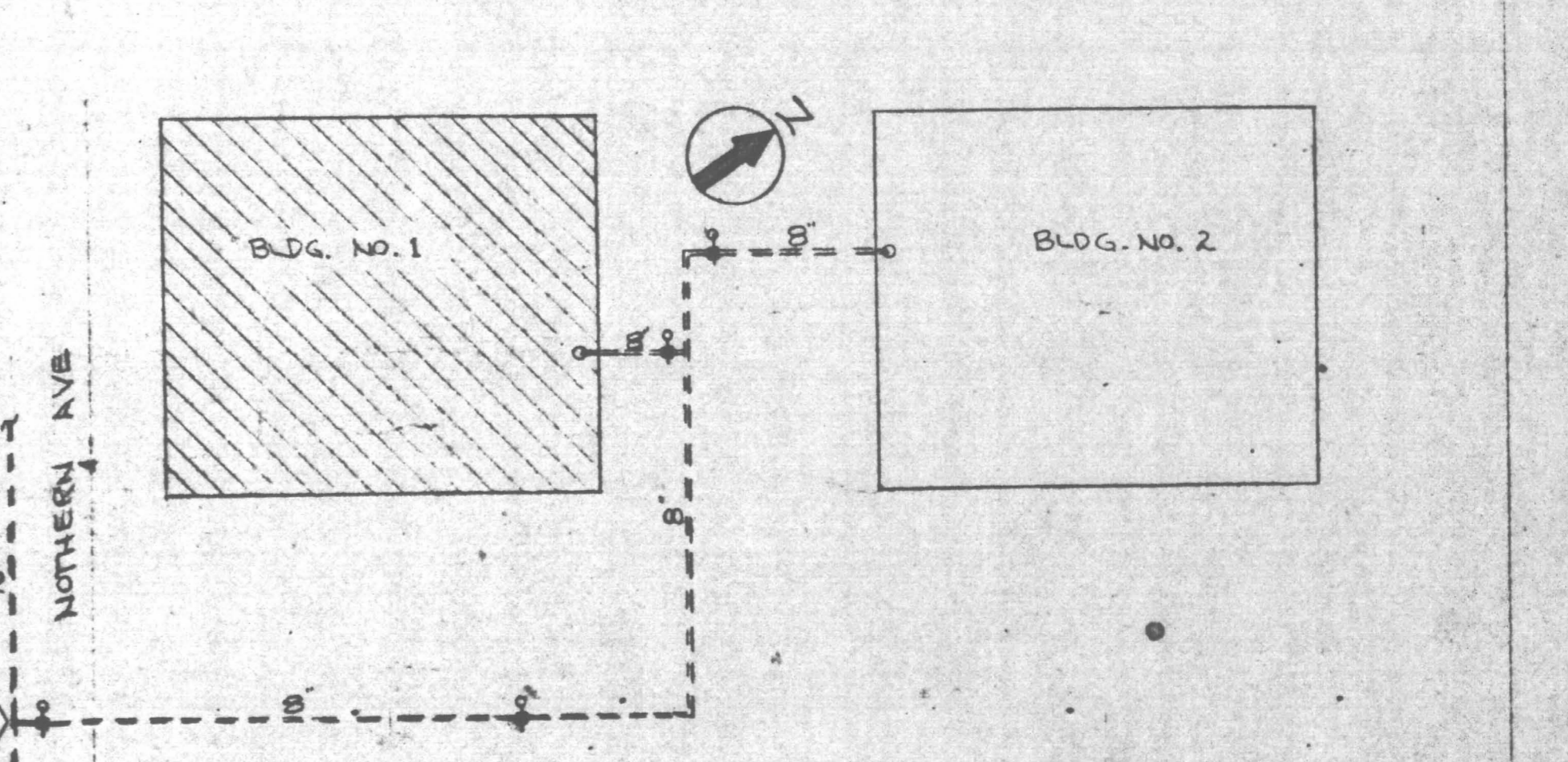
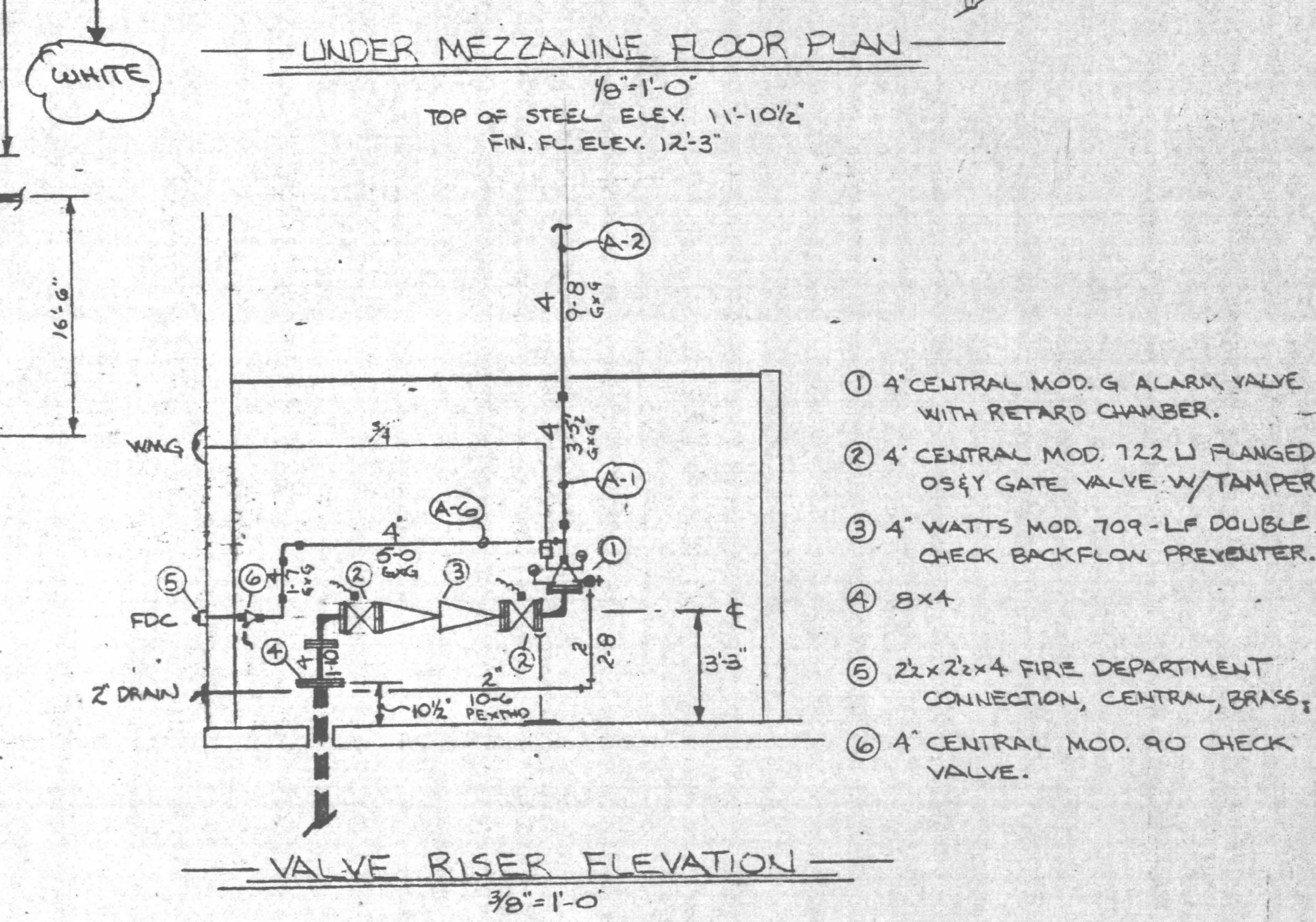


UNDER MEZZANINE FLOOR PLAN
1/8"=1'-0"
TOP OF STEEL ELEV. 11'-10 1/2"
FIN. FL. ELEV. 12'-3"

MAIN FLOOR AND UPPER MEZZANINE FLOOR PLANS
1/8"=1'-0"
TOP OF JOIST ELEV. (M.P.) 25'-1 1/2", ELEV. (L.P.) 24'-0"



- SPRINKLER LEGEND**
- (191) ● CENTRAL MOD. H, 1/2" CHROME RECESSED, 165°.
 - (13) ● CENTRAL MOD. H, 1/2" WHITE RECESSED, 165°.
 - (35) ● CENTRAL MOD. A, 1/2" BRASS UPRIGHT, 165°.
 - (39) ● CENTRAL MOD. A, 1/2" BRASS UPRIGHT, 165° ON 1" SPRING.
 - (22) ● CENTRAL MOD. A-1, 1/2" CHROME DRY PENDENT, 165°.
 - (13) ○ CENTRAL MOD. H, 1/32" BRASS UPRIGHT, 165°.

WATER FLOW DATA

STATIC	50 P.S.I.
RESIDUAL	21 P.S.I.
FLOW	2689 G.P.M.
DATE	10-10-96
LOCATION	310 NORTHERN AVE.
TEST TAKEN BY THE BOSTON WATER AND SEWER COMMISSION	

- NOTES**
- SPRINKLER SYSTEM DESIGN AND INSTALLATION TO BE PER N.F.P.A. NO. 13 STANDARDS.
 - 1" BRANCH LINE PIPE TO BE BLK. SCH. 40 WITH THREADED CAST IRON FITTINGS.
 - 1 1/4" IRON 2" BRANCH LINE PIPE TO BE BLK. SCH. 40 WITH WELDED OUTLETS.
 - 3" AND 4" CROSSMAINS AND FEEDMAINS TO BE BLK. SCH. 40 WITH WELDED OUTLETS.
 - ALL SCH. 40 BRANCH LINE, CROSSMAIN AND FEEDMAIN FITTINGS WILL BE OF THE GROOVED TYPE.
 - DELETED PIPE HANGER CONNECTIONS TO BE REMOVED BY THE CONTRACTOR AND FILL IN.

ORDINARY HAZARD GRP. I
MAIN FLOOR DOCK AND FREEZER - THIS SYSTEM IS DESIGNED FOR 14 SPRINKLERS TO DISCHARGE AT A DENSITY OF .15 G.P.M. OVER A FLOOR AREA OF 1500 SQ. FT. WHEN SUPPLIED WITH WATER AT A RATE OF 213.3 G.P.M. AT A PRESSURE OF 36.86 P.S.I. AT THE BASE OF THE RISER.

AREA #1

LIGHT HAZARD
MEZZANINE OFFICES - THIS SYSTEM IS DESIGNED FOR 16 SPRINKLERS TO DISCHARGE AT A DENSITY OF .10 G.P.M. OVER A FLOOR AREA OF 1500 SQ. FT. WHEN SUPPLIED WITH WATER AT A RATE OF 213.3 G.P.M. AT A PRESSURE OF 36.86 P.S.I. AT THE BASE OF THE RISER.

AREA #2

ORDINARY HAZARD GRP. I
UNDER MEZZANINE COOLER, CUTTING EX. AND OFFICE - THIS SYSTEM IS DESIGNED FOR 12 SPRINKLERS TO DISCHARGE AT A DENSITY OF .15 G.P.M. OVER A FLOOR AREA OF 1500 SQ. FT. WHEN SUPPLIED WITH WATER AT A RATE OF 304.8 G.P.M. AT A PRESSURE OF 82.09 P.S.I. AT THE BASE OF THE RISER.

AREA #3

As-Built
Date: DEC 19 1997

SPRINKLERS BY	CLASSIC FIRE CONTROL, INC. P.O. BOX 437 WYEMOUTH, MA.
PROPERTY OF	NEW BOSTON SEAFOOD EDIC'S MARINE INDUSTRIAL PARK SOUTH BOSTON, MA.
CONTRACT WITH	BONDWIN CONSTRUCTION CORP.
SCALE	BUILDING NO. 1 1" = 1'-0" 1" = 1'-0"
DATE	APRIL 11, 1997