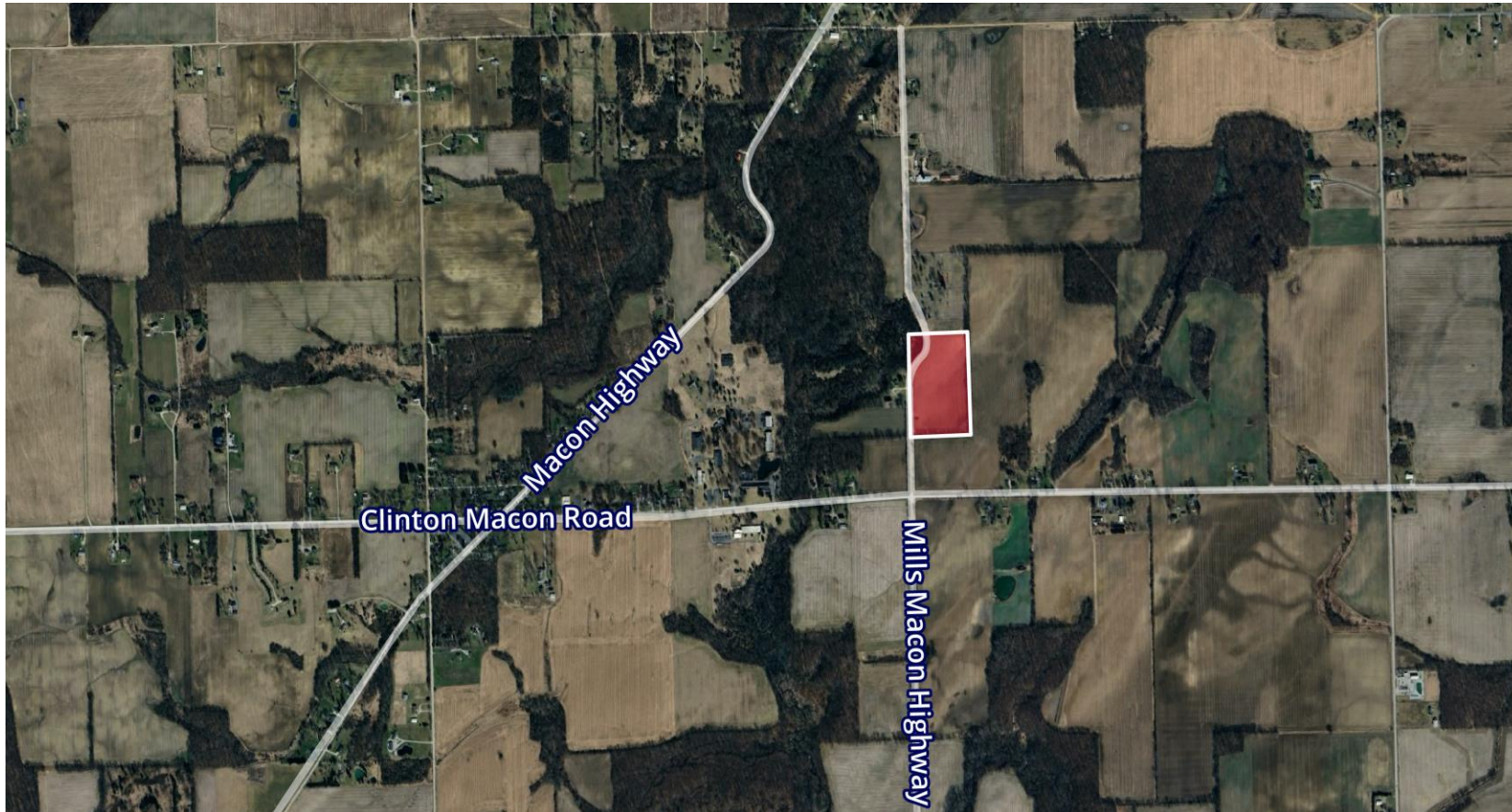


FOR SALE



CHACONAS GROUP
ANN ARBOR AREA



12000 Mills-Macon Hwy • Clinton, MI

Vacant Land | 18.13 Acres



Jim Chaconas
734 769 5005
jim.chaconas@colliers.com

Colliers Ann Arbor
1955 Pauline Blvd, Suite 400
Ann Arbor, MI 48103
colliersannarbor.com





FOR SALE

Vacant Land | 18.13 Acres

PROPERTY DETAILS

- 18.13 Acres
- Macon Township
- Northeast Lenawee County
- Zoned AG: Agricultural District
- Great for Redevelopment of Agriculture
- Offering a Variety of Land Uses, Including Single Family Dwelling.
- Located 10 Miles South of Saline, Close to Dundee, Near US-23, Ann Arbor, Ypsilanti, and Chelsea, and 45 minutes to Detroit and Toledo
- Parcel #: MA0-104-3100-00
- **Offered at \$181,300**



CHACONAS GROUP
ANN ARBOR AREA

ZONING

Vacant Land | 18.13 Acres



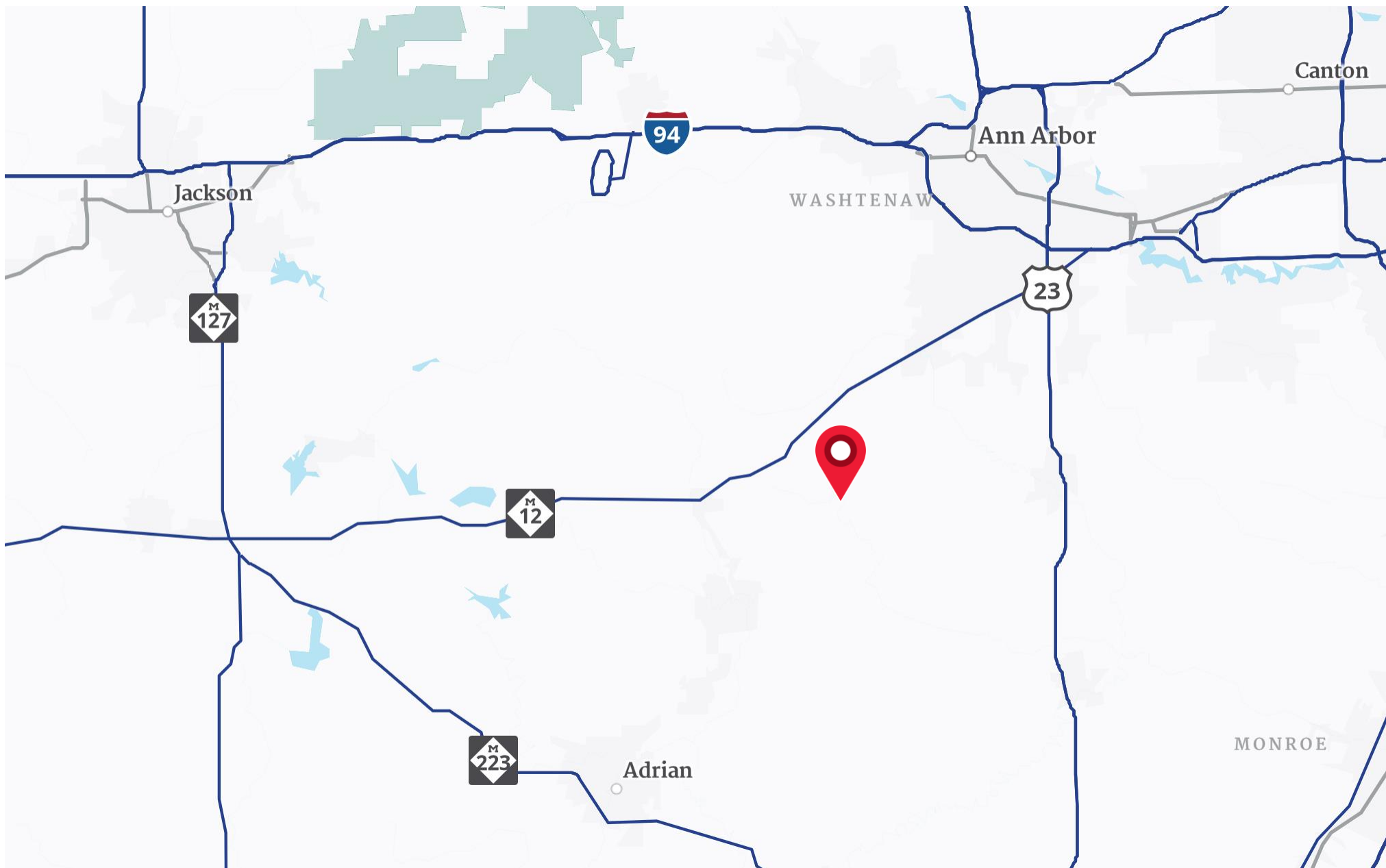
CHACONAS GROUP
ANN ARBOR AREA

The Property is Zoned AG-1: Agriculture District; Prioritizing Agricultural Preservation

Permitted Uses Include:

- Adult Foster Care Family Homes
- Farms, Including Field Crops, Livestock, Poultry, and Horticulture; Except Intensive Animal Feeding Operations
- Family Child Daycare Centers
- Nursery Stock, Farming, and Commercial Green Houses
- Public, Parochial, Or Private Elementary, Intermediate, And High Schools
- Publicly Owned Museums, Libraries, Parks, Playgrounds, And Recreational Facilities
- Single-family Detached Dwellings
- Special Land Uses Permitted

[Download a List of all Permitted and Special Land Uses](#)



LOCATION MAP

Vacant Land | 18.13 Acres



CHACONAS GROUP
ANN ARBOR AREA



CHACONAS GROUP
ANN ARBOR AREA

FOR SALE

12000 Mills-Mackon Hwy Clinton, MI

Vacant Land | 18.13 Acres



Jim Chaconas
734 769 5005
jim.chaconas@colliers.com

We have no reason to doubt the accuracy of information contained herein, but we cannot guarantee it. All information should be verified prior to purchase and/or lease.

