



627 Eleventh Avenue

Between West 46th & 47th Streets
Midtown West Commercial Building for Lease

Property Features

- Single Story Commercial Building For Lease
- West Side of 11th Avenue at 46th Street
- M2 Zone – Permitted Uses: Manufacturing, Retail, Automotive, Medical & Healthcare, Life Sciences, and Other Commercial.
- Move-In Ready Luxury Car Dealership
- Large Showroom with Floor-To-Ceiling Windows
- Frontage – 125' on 11th Avenue
- Vehicle Delivery Area
 - 8 F&I Offices
 - Garage Door Entrance from West 46th Street
- Spacious Reception Counter Area
- 3 Private Executive Offices
- Bullpen for Salespeople
- 2 Restrooms
- Automobile Elevator to Heated Roof Top Parking
- Approximately 112 Parking Spaces on Roof Top Surface and Lifts
- 2 Curb Cuts on West 46th Street





Automotive Elevator



Vehicle Delivery Area + 8 F&I Offices

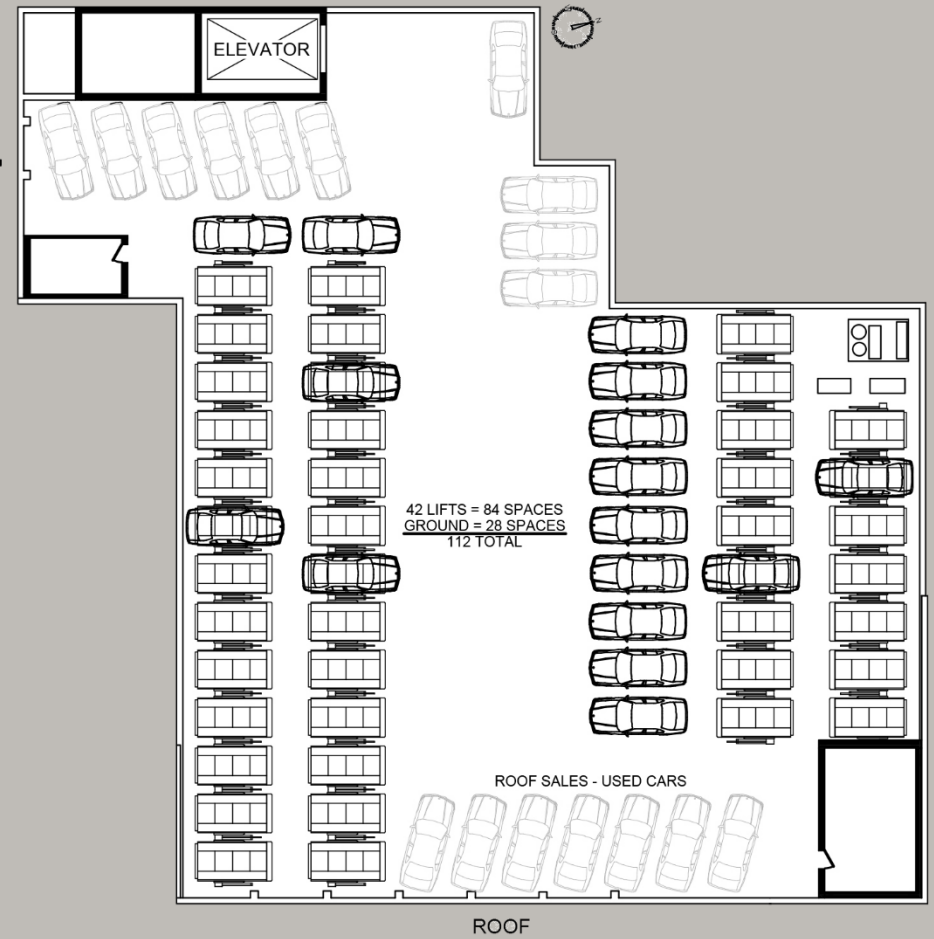
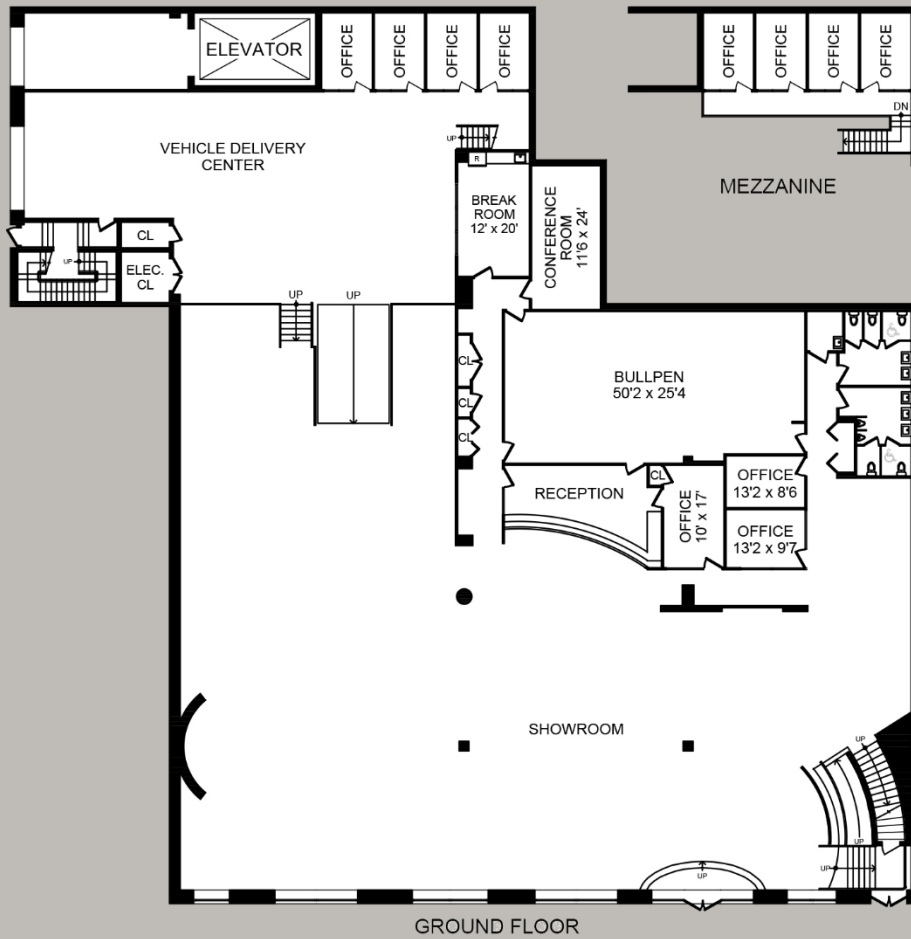


Conference Room



Roof Top Parking

627 ELEVENTH AVENUE



Price: Call For Pricing

Term: Negotiable

Approximate Size: 20,000 RSF

Possession: Arranged