

# 1745 Broadway | NW Corner of 55<sup>th</sup> & Broadway

Random House Tower



## Space Available

- 5,696 SF Ground Floor with 20' ceiling heights
- 2,830 SF Sellable Lower Level with 20' ceiling heights
- Dedicated passenger elevator connecting both levels

## Property Highlights

- At the base of Class A Random House Tower (2,400 employees) and Park Imperial Condos (111 units)
- Steps from new 300,000 SF Nordstrom flagship (coming soon), Columbus Circle and Times Square
- Within a 5-minute walk of the space there are four subway stops welcoming 40-million passengers annually
- 80' of frontage on Broadway and 60' of frontage on 55<sup>th</sup> Street
- Reasonable divisions considered
- Neighbors are Dream Hotel, Carnegie Hall, Ed Sullivan Theater, Serafina, & Brasserie Cognac

For leasing information:

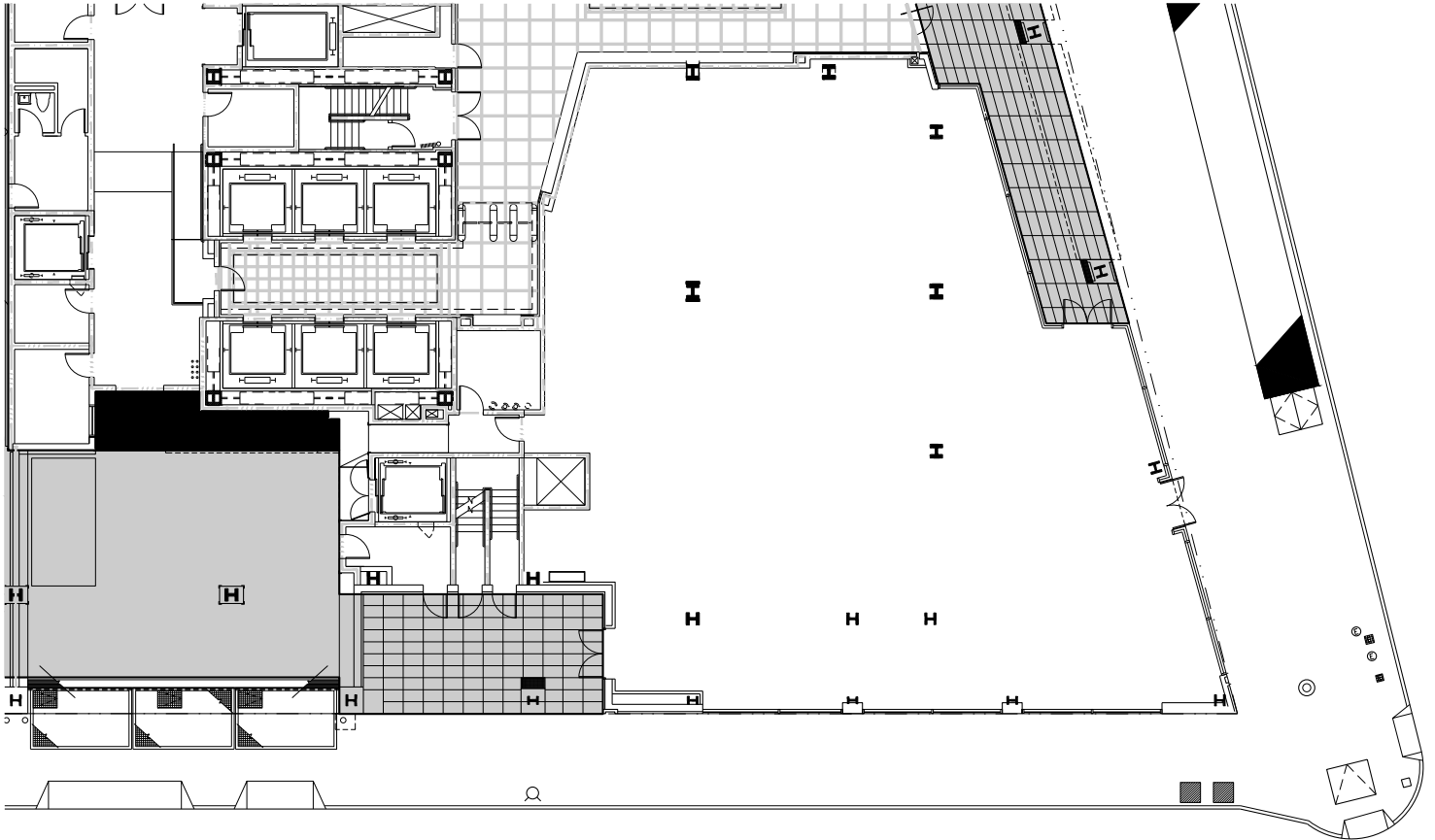
Chris Wittmann p. 212.752.1041 e. [cwittmann@lpc.com](mailto:cwittmann@lpc.com)

LINCOLN  
PROPERTY  
COMPANY

[lpc.com](http://lpc.com)

# GROUND FLOOR PLAN

1745 Broadway, New York, NY 10019



For leasing information:

Chris Wittmann p. 212.752.1041 e. [cwittmann@lpc.com](mailto:cwittmann@lpc.com)

LINCOLN  
PROPERTY  
COMPANY

[lpc.com](http://lpc.com)