

For Lease | Industrial

2655 Park Center Drive Unit B, Simi Valley, Ca 93065



For more information,
please contact:

John Erickson
Senior Vice President
Lic. 00977578
661.253.5202
john.erickson@colliers.com

Christopher Erickson
Senior Associate
Lic. 01966495
661.253.5207
christopher.erickson@colliers.com

Colliers
27200 Tourney Rd.,
Suite 300
Valencia, CA 91355
www.colliers.com



About

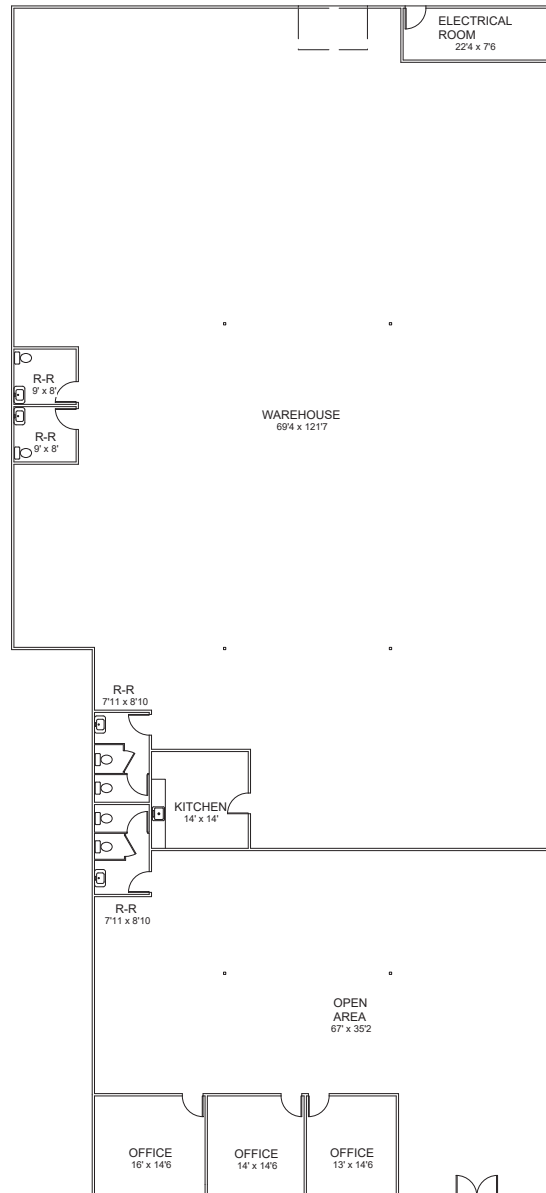


Suite Highlights:

- > **Square Footage:** ± 11,614 SF
- > **Price:** \$1.05 PSF / NNN
- > High Image Industrial /R&D Space
- > 23' clearance
- > One Ground level loading door (12' x 14')
- > Immediate Access to 118 Freeway



Floor Plan



Amenities Map



For more information,
please contact:

John Erickson

Senior Vice President

Lic. 00977578

661.253.5202

john.erickson@colliers.com

Christopher Erickson

Senior Associate

Lic. 01966495

661.253.5207

christopher.erickson@colliers.com



Colliers

27200 Tourney Rd.,

Suite 300

Valencia, CA 91355

www.colliers.com

This document/email has been prepared by Colliers for advertising and general information only. Colliers makes no guarantees, representations or warranties of any kind, expressed or implied, regarding the information including, but not limited to, warranties of content, accuracy and reliability. Any interested party should undertake their own inquiries as to the accuracy of the information. Colliers excludes unequivocally all inferred or implied terms, conditions and warranties arising out of this document and excludes all liability for loss and damages arising there from. This publication is the copyrighted property of Colliers and /or its licensor(s). © 2022. All rights reserved. This communication is not intended to cause or induce breach of an existing listing agreement. [\[Include your market's legal name here. \(ex. Colliers International Group Inc.\)\]](#)