

257 W 19TH ST

PRIME CHELSEA RETAIL SPACE

Aproximate size

Ste Retail: 879 sf

Term

The Retail Space: 2-5 years

Transportation



Overview

Limited Chelsea Retail + Office Opportunity
Welcome to 257 W 19th Street, an ultra unique mix use building with a combination of Office spaces, commercial spaces and Apts for rent.

The building also features basement spaces, parking spaces and a common area which creates a vibrant atmosphere for any office use or tons of foot traffic for any retail tenant.

Neighbors

Chelsea Market, Flatiron, Union Square Greenmarket, Whole foods Market, Trader Joe's, Marshalls, Rubin Museum of Art, + various restaurants and bars.



JOE MOR
718 3000386
JOE@TRIBRONYC.COM



NATHANIEL KIMIAGAROV
516 6699901
JNATE@TRIBRONYC.COM



TRIBRO NYC



257 W 19TH



TRIBRO NYC

The Retail Space Prime Chelsea, NYC

Space use: Retail

Condition: Full Build-Out

Availability: Now

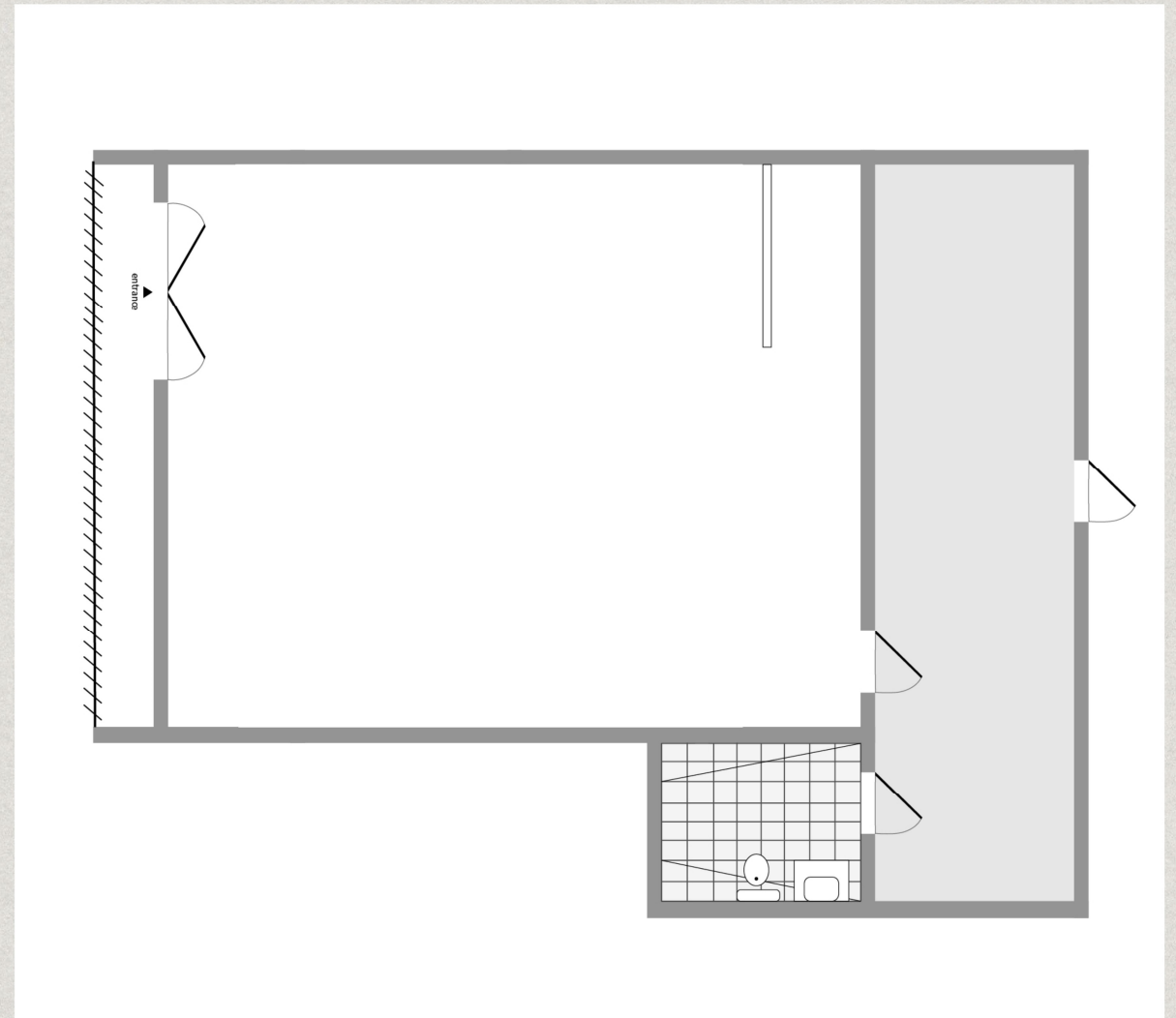
Large Basement

Located in-line with other
retail

Central Heating System

Security System

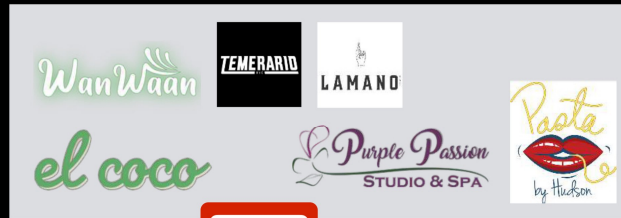
Hight Ceilings



TRIBRO NYC



W 20TH ST



W 20TH ST



W 20TH ST



W 19TH ST



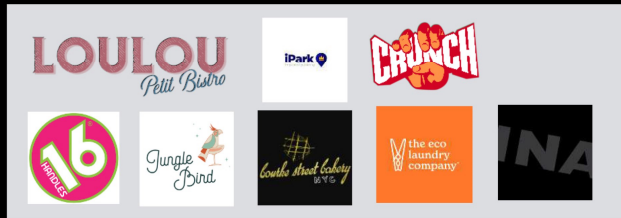
W 19TH ST



W 19TH ST



W 18TH ST



W 18TH ST



W 18TH ST



PRIME CHELSEA

NEIGHBORS



TRIBRO NYC