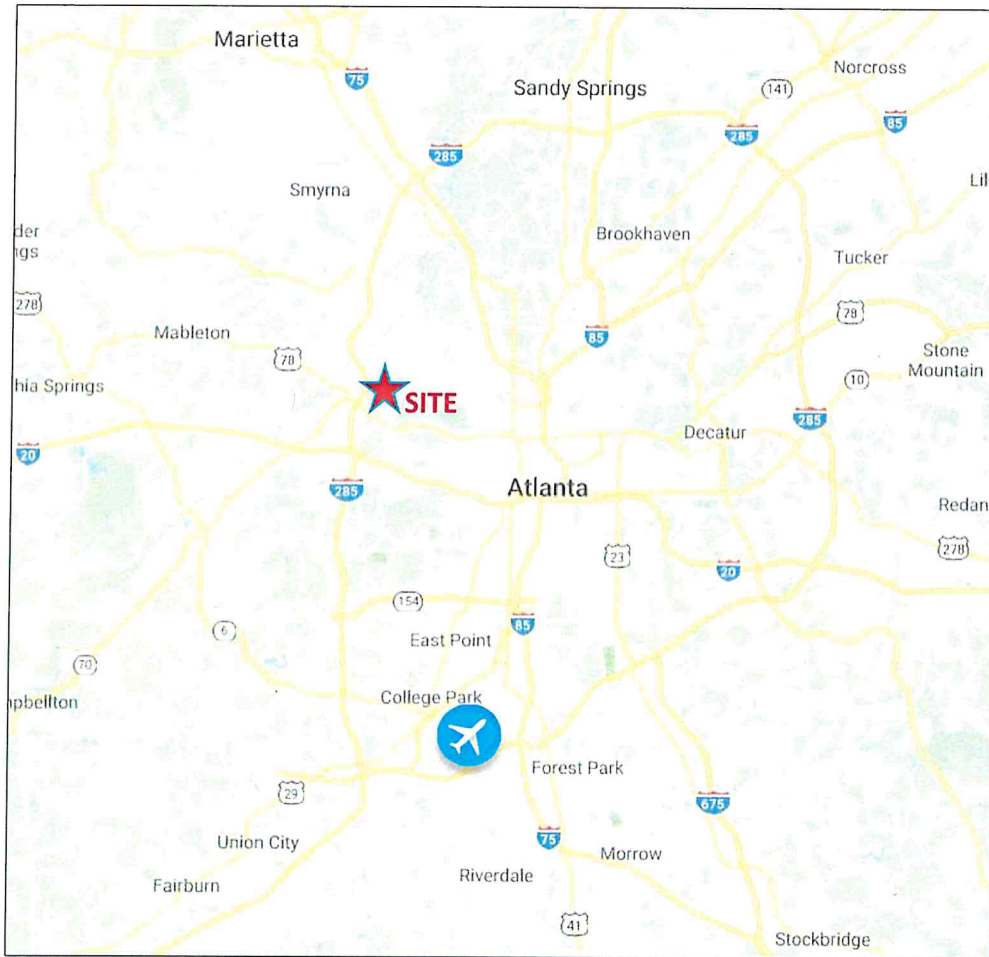
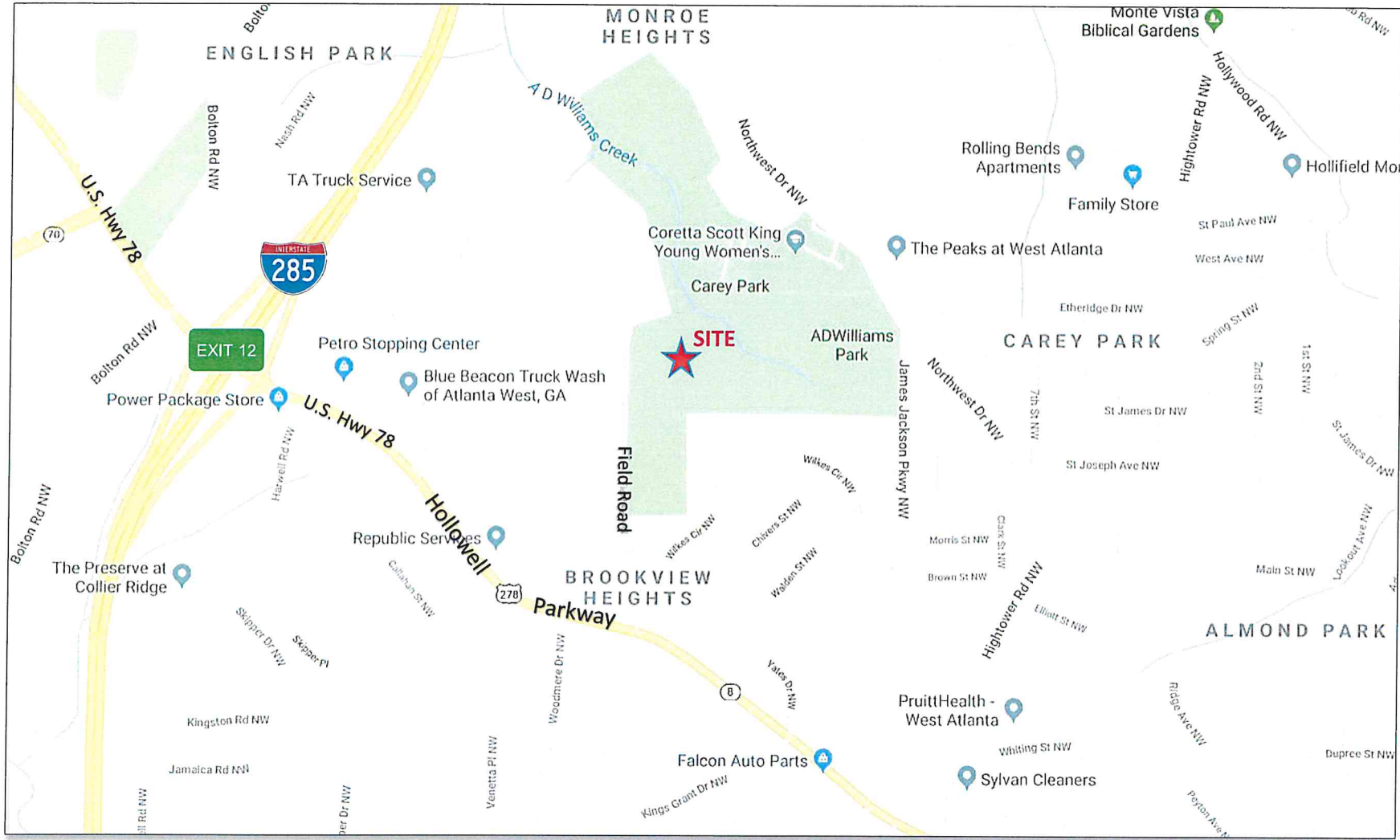


Location: Regional Map

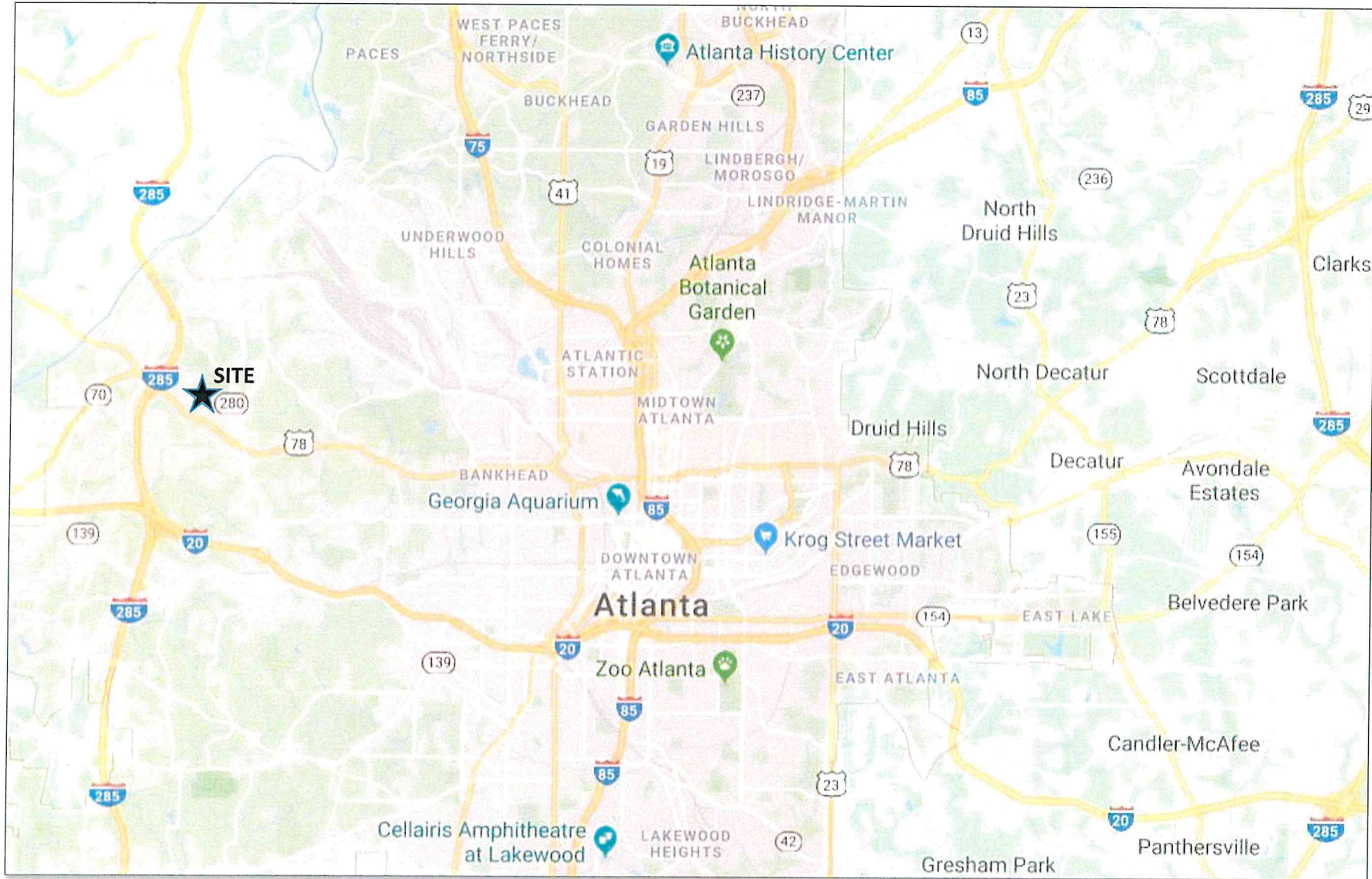


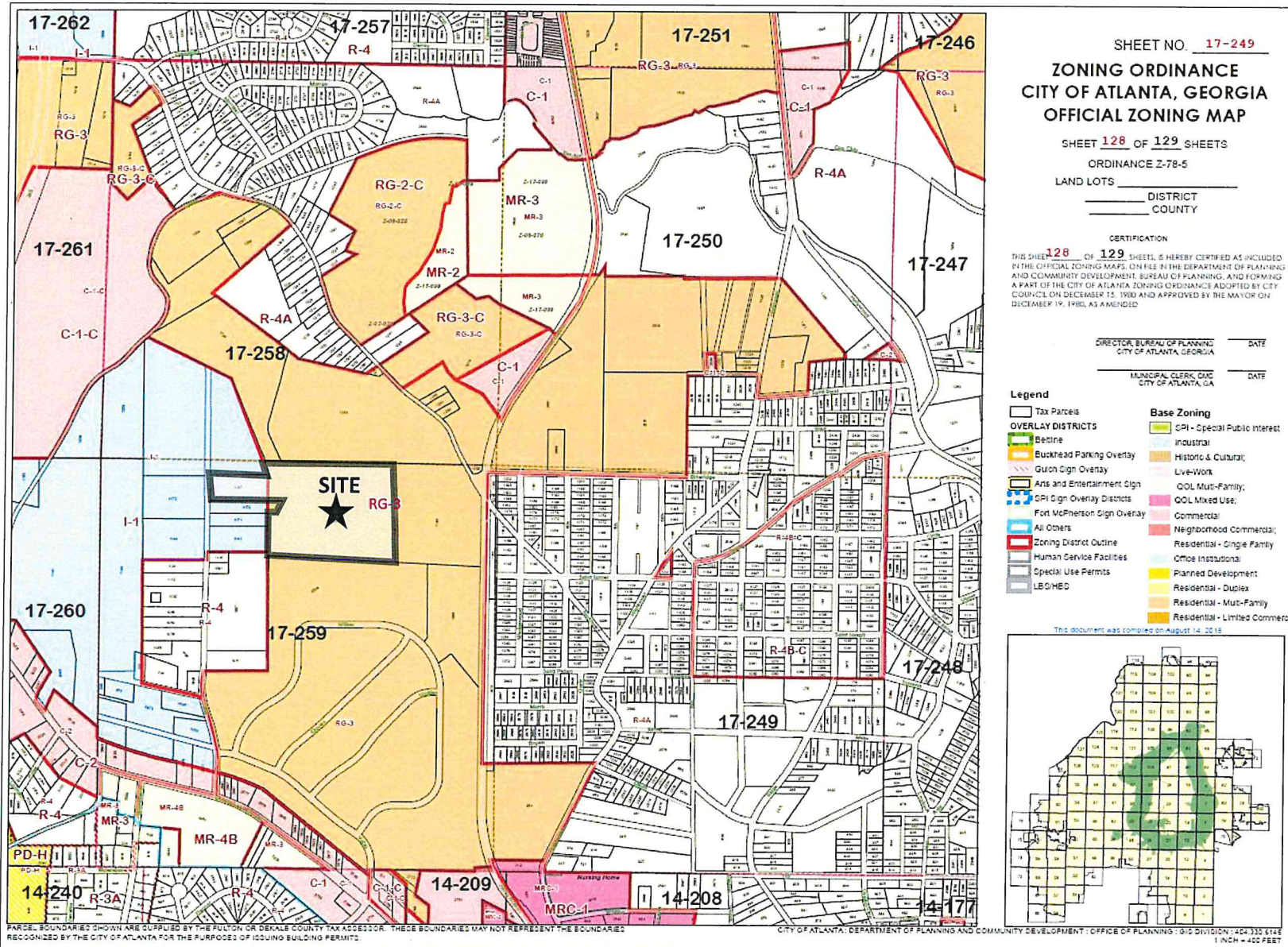
Located just inside the Perimeter highway which encircles the City of Atlanta (I-285) at the interchange of U.S. Hwy 78, this property is also close to I-20, I-75/85 and several major secondary roads – many of which connect to or are within the Hollowell Parkway Redevelopment Plan area.

Location: Local Map

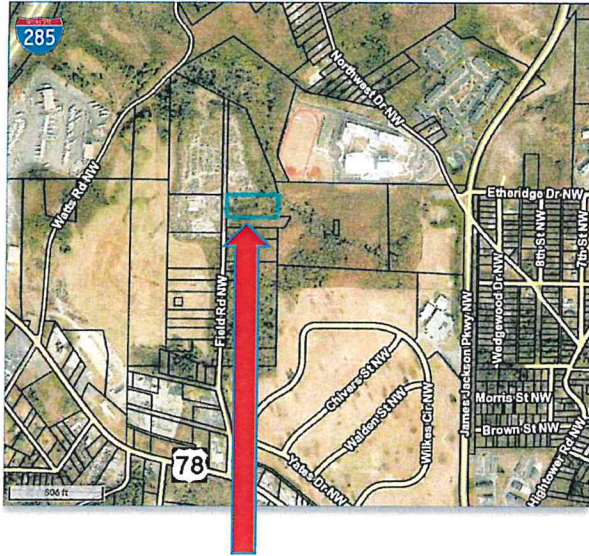


Location: Within the City Limits of Atlanta





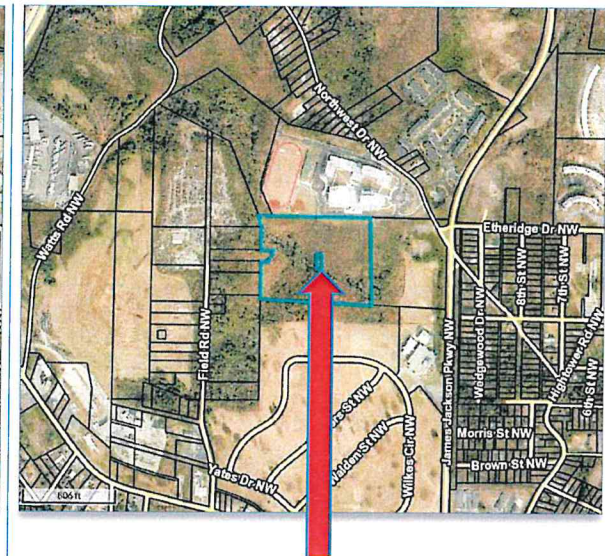
Parcels and Tax Record Data



Parcel ID: 170259 LL0847
Acres: 2.01
Property Class: I4 – Ind Small Tract
Neighborhood: C403
Tax District: 05S
Zoning: I1



Parcel ID: 170259 LL1662
Acres: 15.35
Property Class: R5 – Large Res Tract
Neighborhood: 1739
Tax District: 05S
Zoning: RG3



Parcel ID: 170259 LL 0730
Acres: 0.1676
Property Class: R3 – Res Lot
Neighborhood: 1739
Tax District: 05S
Zoning: RG3

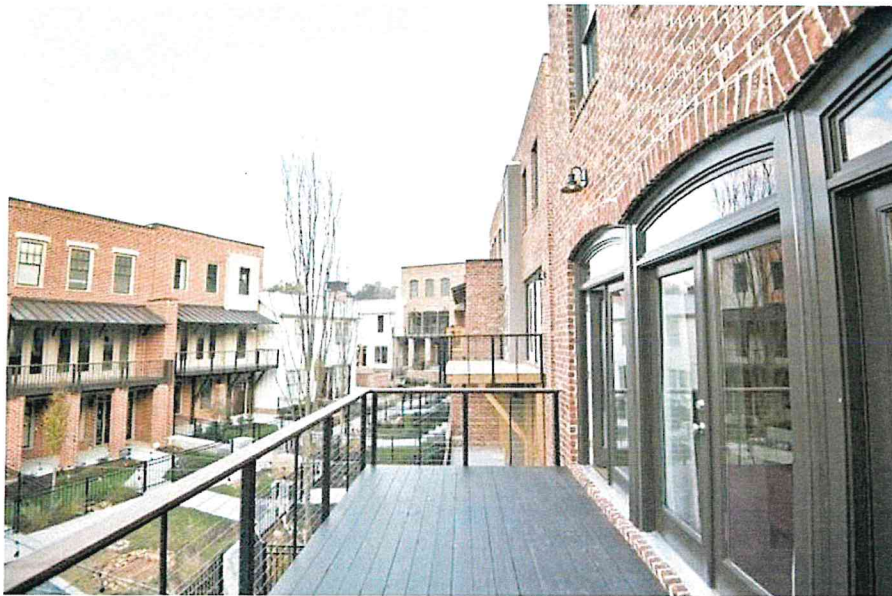
Source: Tax Records. Total acreage from the 2007 Boundary Survey performed for the previous owner (see Page 5 of this package) is 20.328 acres.

DL Hollowell Parkway Redevelopment Plan

The Donald Lee Hollowell Parkway is a 6-mile-long corridor connecting Midtown and Northwest Atlanta and Cobb County.

Brock Built Announces Plans for Bankhead Development

February 1, 2018 • Communities Press



As we continue to develop neighborhoods across Atlanta's Westside, we are excited to announce our plans for a new townhome development in the Bankhead district of Atlanta. This new modern, affordable living community will be located along Donald Lee Hollowell Parkway. As the first major private development of its kind in the district, Brock Built owner Steve Brock explained to the *Saporta Report*, "There's enough momentum of other projects in the area that we can step out and make this a success. We like to be the leading indicator, the pioneer in the area."

WESTSIDE ATLANTA DEVELOPMENT NEWS ATLANTA CONSTRUCTION NEWS

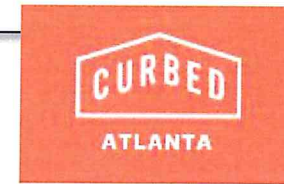
Renderings emerge for large development planned near Bankhead MARTA Station

It's the latest substantial proposal in the vicinity of MARTA, Westside Park at Bellwood Quarry

By Sean Keenan | @ThatSeanKeenan | May 13, 2019, 1:57pm EDT



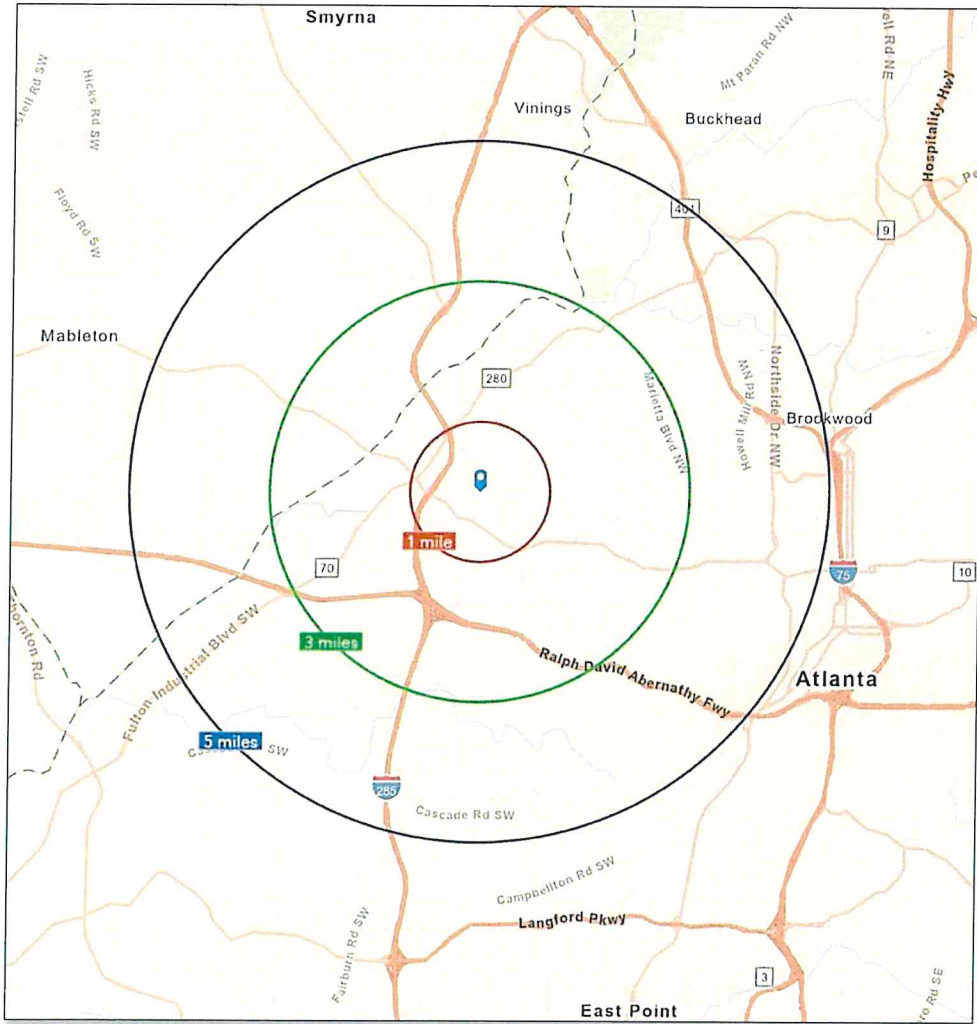
How the developer's Donald Lee Hollowell Parkway entry point could look. | Group images



How the project would front Donald Lee Hollowell Parkway. | DeFoor Ventures



Demographics: 1, 3 and 5-Mile Radius



2019	1 Mile	3 Miles	5 Miles
Population	7,979	60,358	206,882
Households (HH)	2,997	23,545	83,543
Average HH Size	2.62	2.53	2.3
Median Age	33.9	34.5	33.3
Median HH Income	\$ 28,471	\$ 38,241	\$ 53,933
Average HH Income	\$ 40,034	\$ 65,437	\$ 87,100
HHolds > \$75,000	12.0%	27.0%	37.5%
2024	1 Mile	3 Miles	5 Miles
Population	8,250	64,535	221,489
Households (HH)	3,097	25,132	90,024
Average HH Size	2.62	2.54	2.29
Median Age	34.4	35.1	33.6
Median HH Income	\$ 33,328	\$ 49,423	\$ 64,019
Average HH Income	\$ 48,538	\$ 80,788	\$101,573
HHolds > \$75,000	17.1%	34.1%	44.4%

Broker Contact Information

**UNITED REALTY
ADVISORS**

625 Holcomb Bridge Road
Norcross, GA 30071
770-582-2846

Real Estate Contact: RAY
HEDAYATI
Ray@URArealty.net
678-300-6451

Georgia Brokerage
License # H-60160

Reza Hedayati, Broker GA
License# 281146



Thank you for your interest in this property.

Contact us for additional details, or for copies of supporting documents we may have on hand which are shown or mentioned in this package.

Information in this package was obtained from sources believed to be reliable. However, United Realty Advisors may not have verified its accuracy and makes no guarantee, warranty or representation about it. This package is submitted to recipients subject to the possibility of errors, omissions, change of price or other conditions, prior sale, lease or financing, or withdrawal without prior notice.