

13668 N State Highway 80

LEESVILLE, TEXAS

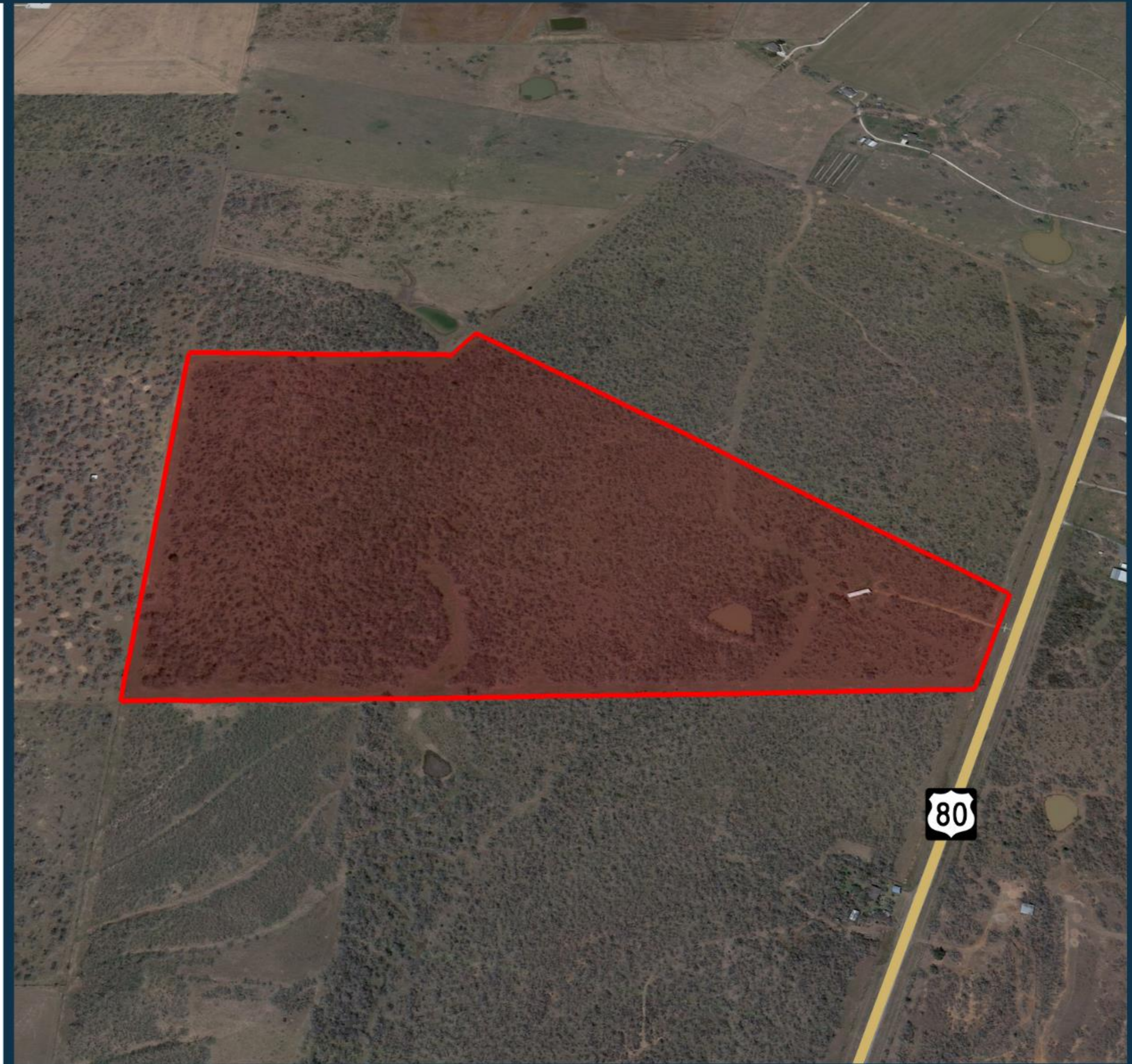
75.75 Acres

CALL BROKER FOR PRICING

BC

BALL COMMERCIAL

— REAL ESTATE —



Tommy Wilson

Senior Vice President ■ twilson@ballcre.com

Hunter M. Ball

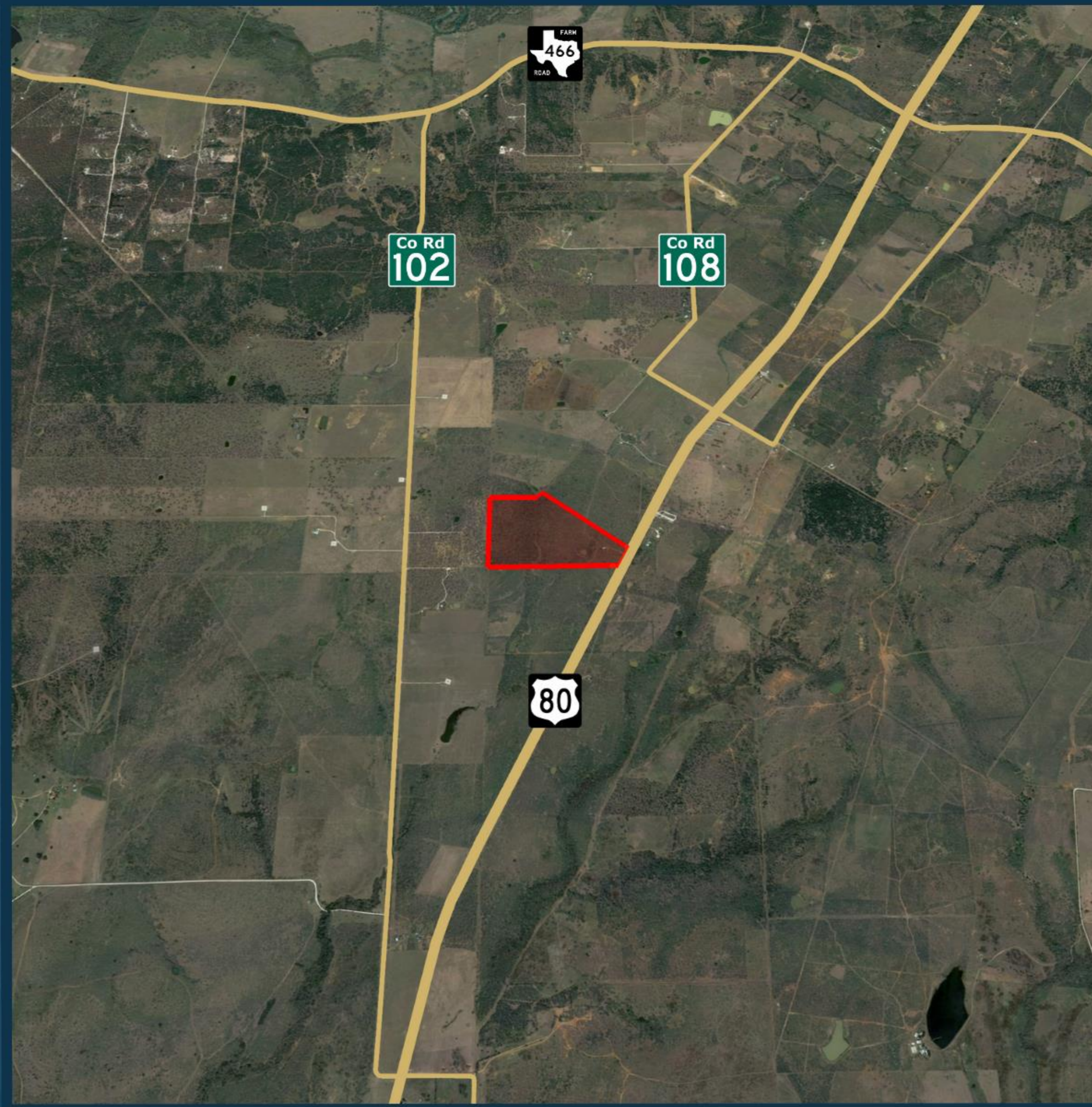
Founder & Principal ■ hunter@ballcre.com

(512) 557-0237

ballcre.com

13668 N State Highway 80

LEESVILLE, TEXAS



Acreage

75.75 Acres

Frontage

± 420 feet on Highway 80

Location

± 5 miles south of Highway 90 Alternate

± 14 miles south of Interstate 10

± 16 miles south of Luling

± 22 miles southeast of Seguin

Floodplain

Not in the 100-year floodplain

Best Use

RV park, mobile homes or investment

Tommy Wilson

Senior Vice President ■ twilson@ballcre.com

Hunter M. Ball

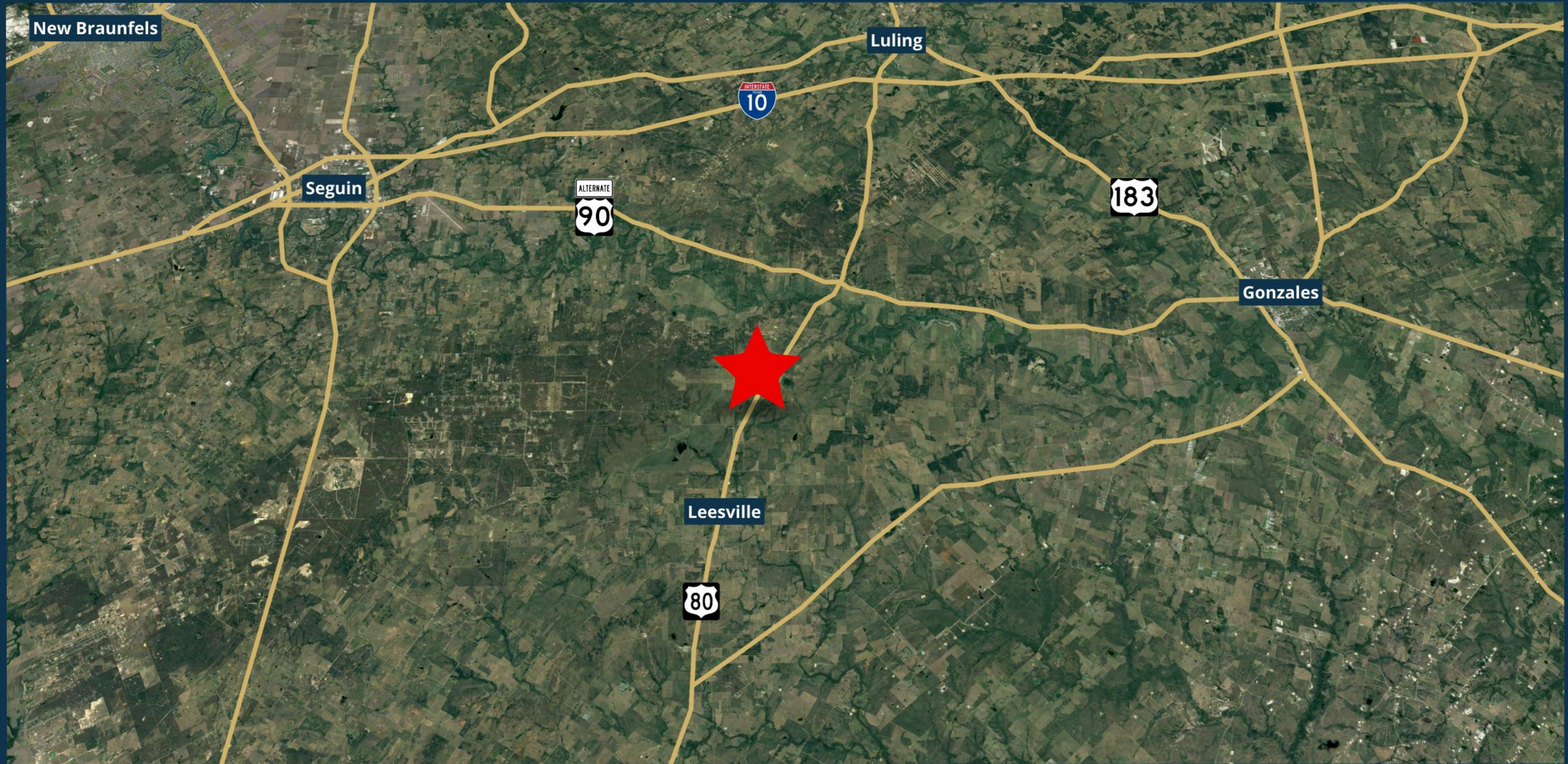
Founder & Principal ■ hunter@ballcre.com

(512) 557-0237

ballcre.com

13668 N State Highway 80

LEESVILLE, TEXAS



Tommy Wilson
Senior Vice President ■ twilson@ballcre.com

Hunter M. Ball
Founder & Principal ■ hunter@ballcre.com

(512) 557-0237
ballcre.com