



Avison Young - Raleigh-Durham | 5440 Wade Park Boulevard, Suite 200 | Raleigh, NC 27607

FOR LEASE

# Arena Place

1340 Sunday Drive, Raleigh, NC 27607

**AVISON  
YOUNG**

# Property highlights

## Single-story office suites for lease

### Offering Summary

Lease Rate: \$23.00/sf, NNN

TICAM: \$5.50/sf

Building Size: 7,119 sf

Suite 101: 2,688 sf

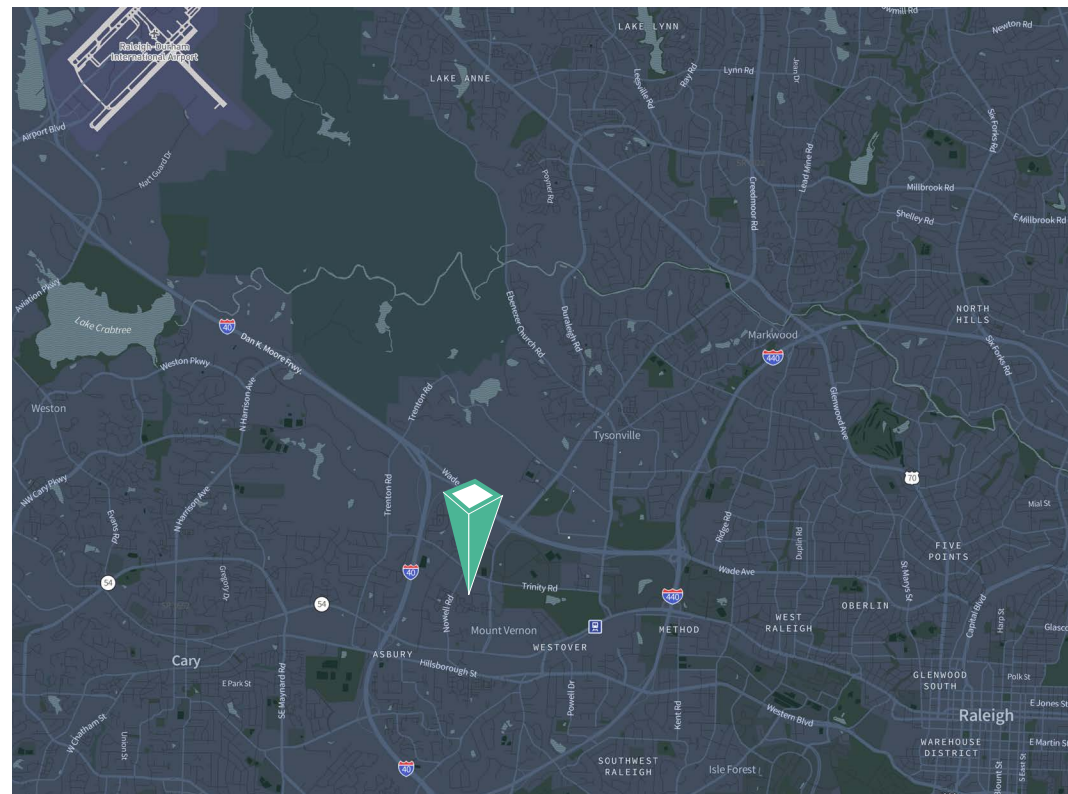
Suite 105: 4,431 sf

Parking Ratio: 4 per 1,000 sf

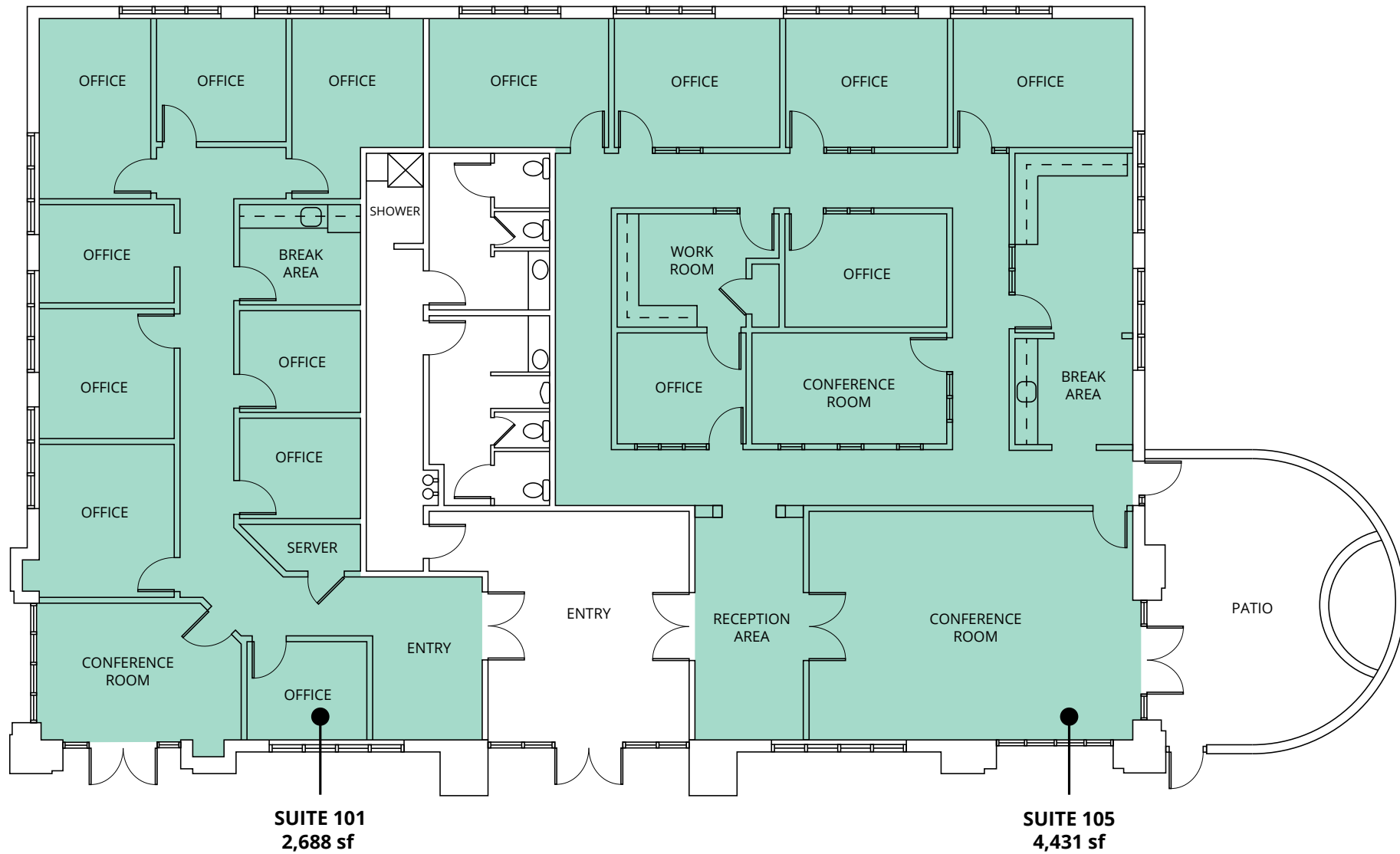


### Highlights

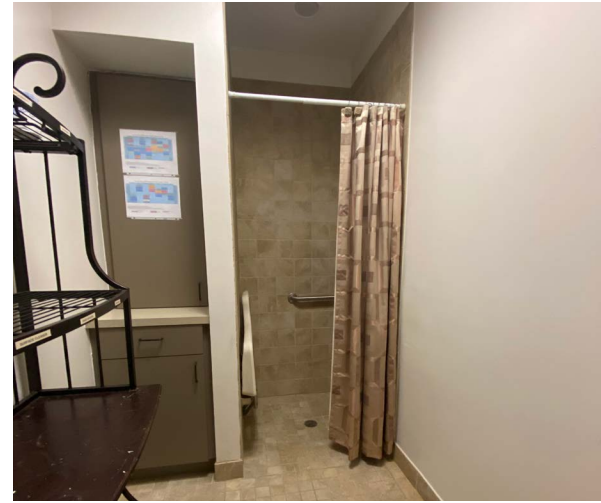
- Building and monument signage available
- Located in a professional office park
- Brick building with windows on three sides
- Suite 105 features outside patio adjacent to conference room
- Professional property management and maintenance provided by Avison Young
- Central location with easy access to I-40, I-440 Beltline, I-540, Research Triangle Park, RDU International Airport, and Cary



# Floor Plan



**AVISON  
YOUNG**



**Gallery**



Demographics

**173,732**  
Total population  
within a five-mile  
radius

**10,973**  
Total businesses  
within a five-mile  
radius

**142,170**  
Total employees  
within a five-mile  
radius

**73,080**  
Households  
within a five-mile  
radius

**\$103,519**  
Avg. hh income  
within a five-mile  
radius

**\$437,355**  
Avg. house value  
within a five-mile  
radius

# Let's talk.

**Michael Vulpis**  
Senior Vice President, Office Leasing & Sales  
D 919 420 1562  
[michael.vulpis@avisonyoung.com](mailto:michael.vulpis@avisonyoung.com)

Avison Young - Raleigh-Durham  
5440 Wade Park Boulevard, Suite 200 | Raleigh, NC 27607

© 2024. Avison Young - Raleigh-Durham. Information contained herein was obtained from sources deemed reliable and, while thought to be correct, have not been verified. Avison Young - Raleigh-Durham does not guarantee the accuracy or completeness of the information presented, nor assumes any responsibility or liability for any errors or omissions therein.

**AVISON  
YOUNG**