



MEDICAL OFFICE WITH PARKING

*±35,000 SF Medical Office
Available for Lease in
Salem, OR*

5050 SKYLINE VILLAGE LOOP SOUTH
SALEM, OR

ALEXANDRA HENDERSON

503.830.5431

alexandra.henderson@kidder.com

MARK FRASER, SIOB

503.750.8200

mark.fraser@kidder.com

KIDDER.COM





*Second generation medical office
with parking available for lease
in Salem, OR.*

PROPERTY OVERVIEW

ADDRESS	5050 Skyline Village Loop South Salem, OR 97306
SIZE	±35,000 RSF on two floors (Divisible to ±17,500 RSF)
LAND AREA	111,514 SF (2.56 AC)
YEAR BUILT	1996
PARKING	4.4/1,000 SF
AVAILABLE	January 1, 2027
LEASE RATE	Call for rate

±35,000 RSF

BUILDING AREA

2

FLOORS

→ [VIEW PROPERTY TOUR](#)

5050 SKYLINE VILLAGE LOOP SOUTH



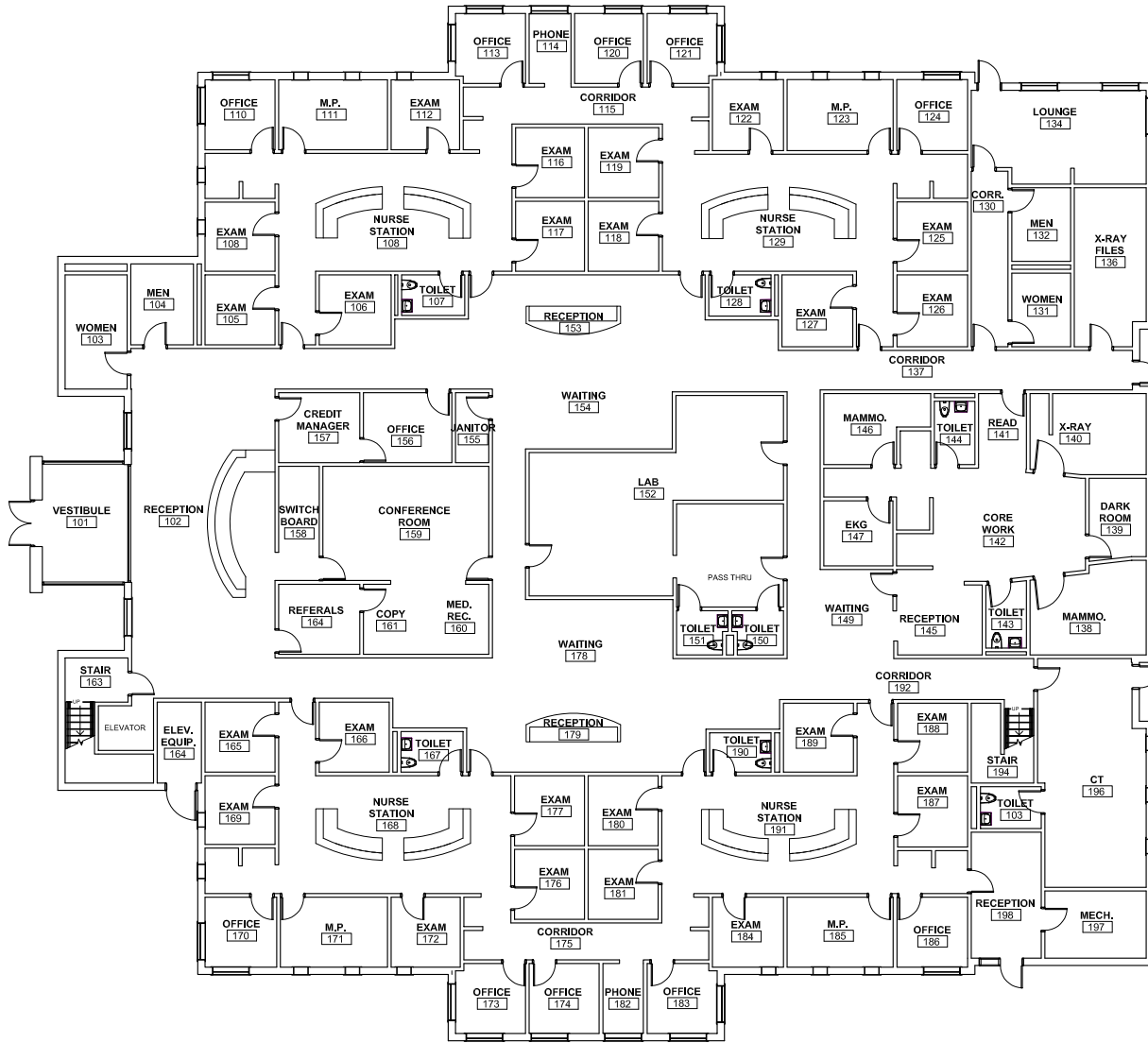
5050 SKYLINE VILLAGE LOOP SOUTH



AVAILABLE FOR LEASE

KIDDER MATHEWS

FIRST FLOOR PLAN



+17,500 RSF

FIRST FLOOR SIZE

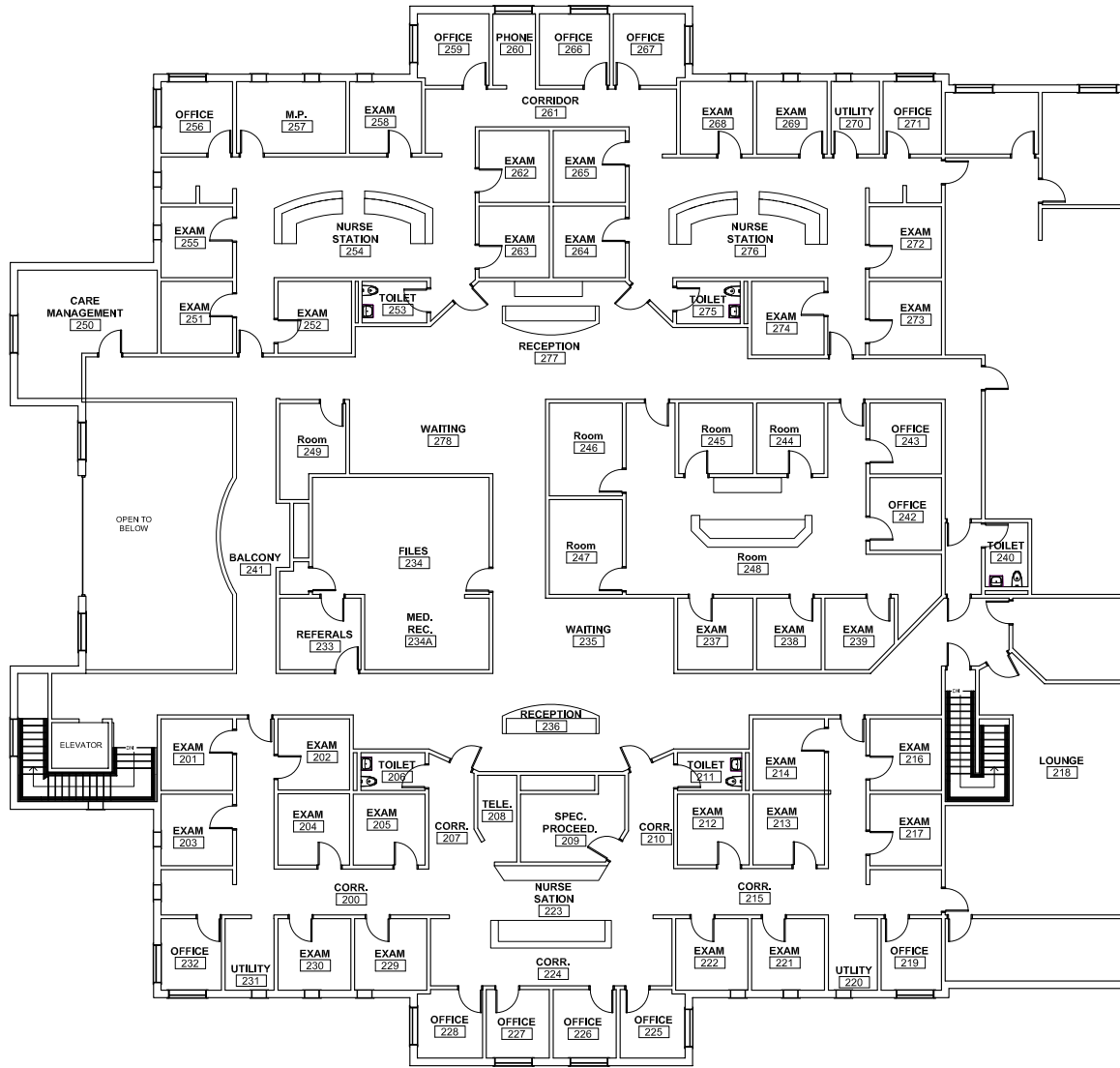
+35,000 RSF

TOTAL BUILDING SIZE

2.56 AC

LAND AREA

SECOND FLOOR PLAN



+17,500 RSF

SECOND FLOOR SIZE

+35,000 RSF

TOTAL BUILDING SIZE

2.56 AC

LAND AREA



5050 SKYLINE VILLAGE LOOP SOUTH





5050 SKYLINE VILLAGE LOOP SOUTH

*For more information on
this property, please contact*

ALEXANDRA HENDERSON
503.830.5431
alexandra.henderson@kidder.com

MARK FRASER, SIOB
503.750.8200
mark.fraser@kidder.com

KIDDER.COM

This information supplied herein is from sources we deem reliable. It is provided without any representation, warranty, or guarantee, expressed or implied as to its accuracy. Prospective Buyer or Tenant should conduct an independent investigation and verification of all matters deemed to be material, including, but not limited to, statements of income and expenses. Consult your attorney, accountant, or other professional advisor. All Kidder Mathews designs are the sole property of Kidder Mathews. Branded materials and layouts are not authorized for use by any other firm or person.

