

**SALE / LEASE**  
INQUIRE FOR PRICING

**5,000 SF / 7,000 SF / 12,000 SF COMMERCIAL CONDOS**

5908 & 5909 Enterprise Ct, Frederick, MD 21703



*All information contained herein is deemed reliable, but not guaranteed.*



**Seamus Fitzgerald**

Executive Vice President

301-787-4050

seamus@frg.us

www.frg.us

**Meagan Fitzgerald Romero**

Senior Associate, Sales & Leasing

301-755-3818

meagan@frg.us

www.frg.us

"Quality Real Estate Since 1976"

Fitzgerald Realty Group, Inc. | 8 E 2nd Street, Suite 101 | Frederick, MD 21701 | (301) 698-1080

# SALE / LEASE

INQUIRE FOR PRICING

## 5,000 SF / 7,000 SF / 12,000 SF COMMERCIAL CONDOS

5908 & 5909 Enterprise Ct, Frederick, MD 21703



5908 ENTERPRISE CT



5909 ENTERPRISE CT

### QUICK FACTS

AVAILABILITY	5,000 SF / 7,000 SF / 12,000 SF
SPACE TYPE	Commercial Condos
ZONING	GC (General Commercial, Frederick County)
LOADING	Drive-In Doors
DATE AVAILABLE	Immediately



Currently used as a paint and body shop



Excellent Zoning allows for a wide variety of commercial uses



5909 features fenced-in rear yard



Will sell individually


Fitzgerald Realty Group, Inc. ("FRG"), as exclusive representative of the owner, is pleased to offer the opportunity to purchase one or two commercial condos in a growing area of Frederick. Located just off MD Rt 180 and convenient to I-70/I-270/Rt. 15, the units are currently used as paint and body shop. The existing paint/body equipment is available if desired.

*All information contained herein is deemed reliable, but not guaranteed.*



**Seamus Fitzgerald**

Executive Vice President

 301-787-4050

 [seamus@frg.us](mailto:seamus@frg.us)

 [www.frg.us](http://www.frg.us)

**Meagan Fitzgerald Romero**

Senior Associate, Sales & Leasing

 301-755-3818

 [meagan@frg.us](mailto:meagan@frg.us)

 [www.frg.us](http://www.frg.us)

**SALE / LEASE**  
INQUIRE FOR PRICING

**5,000 SF / 7,000 SF / 12,000 SF COMMERCIAL CONDOS**

5908 & 5909 Enterprise Ct, Frederick, MD 21703



## Popular Permitted Uses in GC Zoning

Warehouse/Wholesaling	Mobile Home Sales	Household Furnishings
Fence Contractor	Paint Store	Animal Hospital
Pool Contractor	Office equipment	Vet Clinic
Siding Contractor	Pet Store	Health Club
Landscape Contractor	Pet Care/Grooming	Fitness Center
Carpentry Shop	Liquor Store	Child Care/Nursery School
Electrical Shop	Restaurant	Place of Worship
Plumbing Shop	Night Club	Kennel
Welding Shop	Tavern	
Printing Shop	Lounge	
Upholstery Shop	Dance/Music Studio	
Commercial Nursery	Office Uses	
Lumber Yard	Laboratory/Research	
Indoor Sports/ Recreation Facility	Auto Sales, Repair or Service	

*All information contained herein is deemed reliable, but not guaranteed.*



**Seamus Fitzgerald**

Executive Vice President

301-787-4050

seamus@frg.us

www.frg.us

**Meagan Fitzgerald Romero**

Senior Associate, Sales & Leasing

301-755-3818

meagan@frg.us

www.frg.us

"Quality Real Estate Since 1976"

Fitzgerald Realty Group, Inc. | 8 E 2nd Street, Suite 101 | Frederick, MD 21701 | (301) 698-1080

# 5908 PHOTOS

## 5,000 SF / 7,000 SF / 12,000 SF COMMERCIAL CONDOS

5908 & 5909 Enterprise Ct, Frederick, MD 21703



All information contained herein is deemed reliable, but not guaranteed.



**Seamus Fitzgerald**

Executive Vice President

301-787-4050

seamus@frg.us

www.frg.us

**Meagan Fitzgerald Romero**

Senior Associate, Sales & Leasing

301-755-3818

meagan@frg.us

www.frg.us

# 5909 PHOTOS

## 5,000 SF / 7,000 SF / 12,000 SF COMMERCIAL CONDOS

5908 & 5909 Enterprise Ct, Frederick, MD 21703



All information contained herein is deemed reliable, but not guaranteed.



**Seamus Fitzgerald**

Executive Vice President

301-787-4050

seamus@frg.us

www.frg.us

**Meagan Fitzgerald Romero**

Senior Associate, Sales & Leasing

301-755-3818

meagan@frg.us

www.frg.us

# 5908 FLOOR PLAN

## 5,000 SF / 7,000 SF / 12,000 SF COMMERCIAL CONDOS

5908 & 5909 Enterprise Ct, Frederick, MD 21703



All information contained herein is deemed reliable, but not guaranteed.



**Seamus Fitzgerald**

Executive Vice President

301-787-4050

seamus@frg.us

www.frg.us

**Meagan Fitzgerald Romero**

Senior Associate, Sales & Leasing

301-755-3818

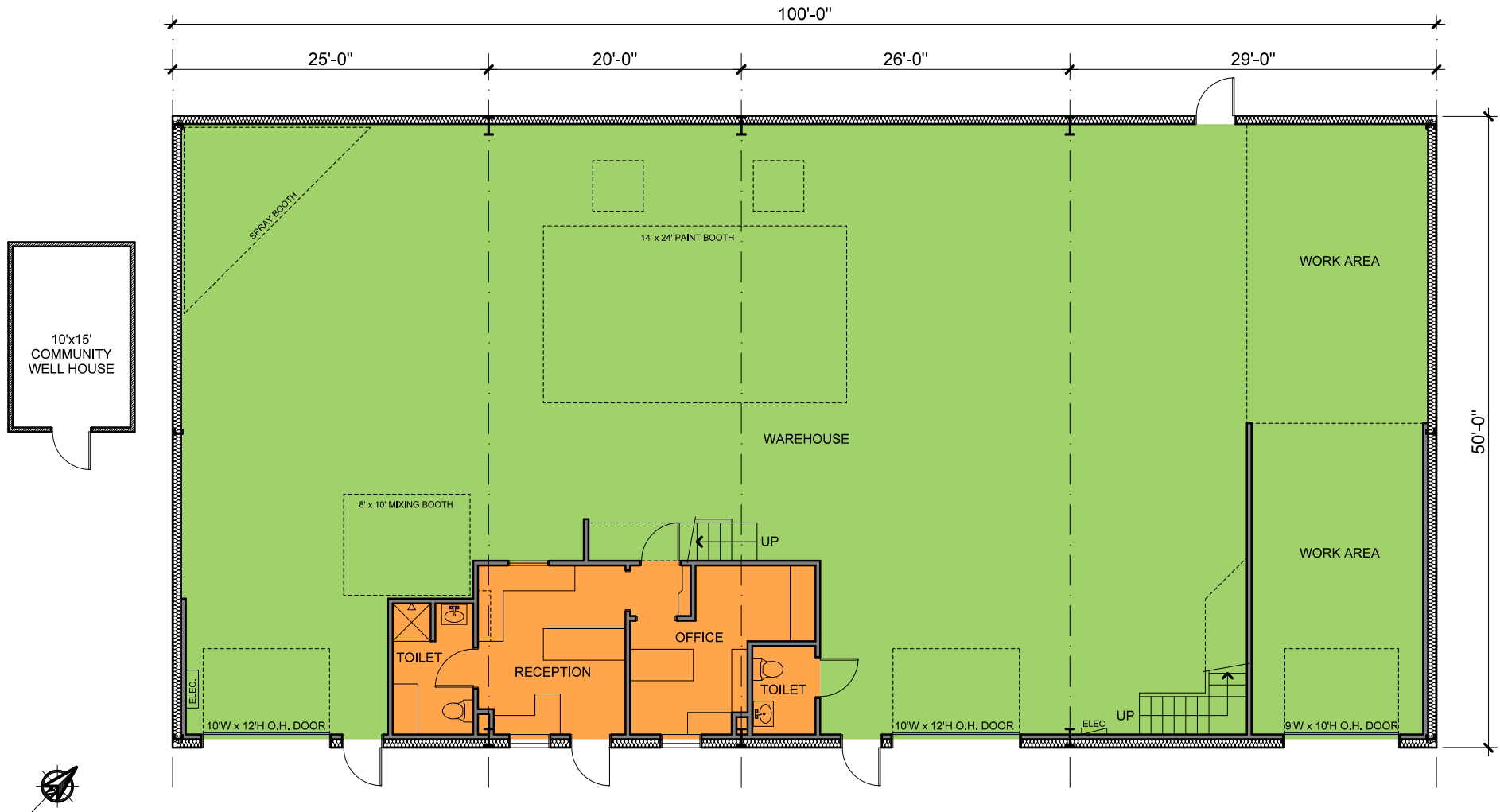
meagan@frg.us

www.frg.us

# 5909 FLOOR PLAN

## 5,000 SF / 7,000 SF / 12,000 SF COMMERCIAL CONDOS

5908 & 5909 Enterprise Ct, Frederick, MD 21703



All information contained herein is deemed reliable, but not guaranteed.



**Seamus Fitzgerald**

Executive Vice President

301-787-4050

seamus@frg.us

www.frg.us

**Meagan Fitzgerald Romero**

Senior Associate, Sales & Leasing

301-755-3818

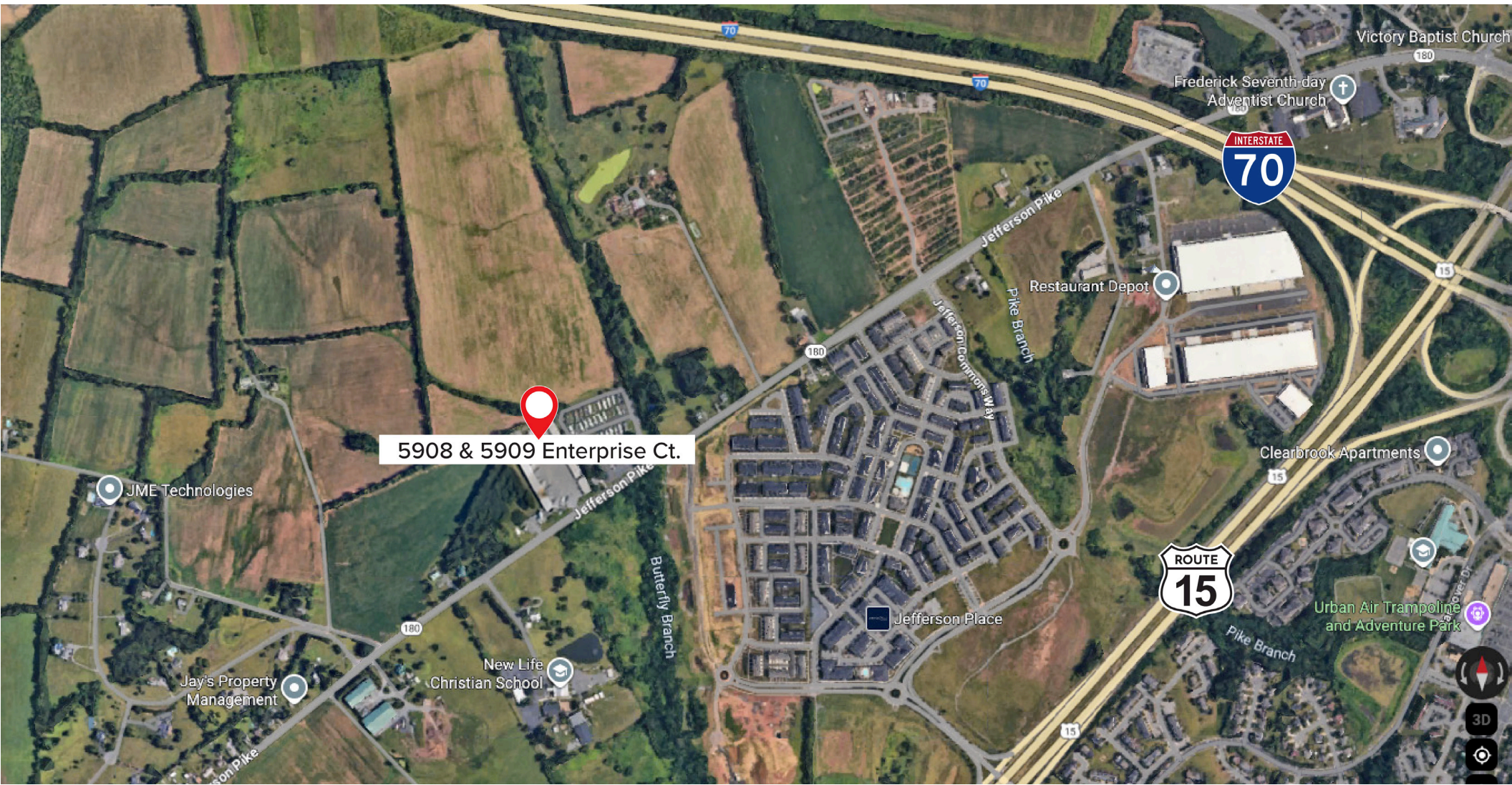
meagan@frg.us

www.frg.us

# AERIAL MAP

## 5,000 SF / 7,000 SF / 12,000 SF COMMERCIAL CONDOS

5908 & 5909 Enterprise Ct, Frederick, MD 21703



**Seamus Fitzgerald**

Executive Vice President

301-787-4050

seamus@frg.us

www.frg.us

**Meagan Fitzgerald Romero**

Senior Associate, Sales & Leasing

301-755-3818

meagan@frg.us

www.frg.us

"Quality Real Estate Since 1976"

Fitzgerald Realty Group, Inc. | 8 E 2nd Street, Suite 101 | Frederick, MD 21701 | (301) 698-1080