

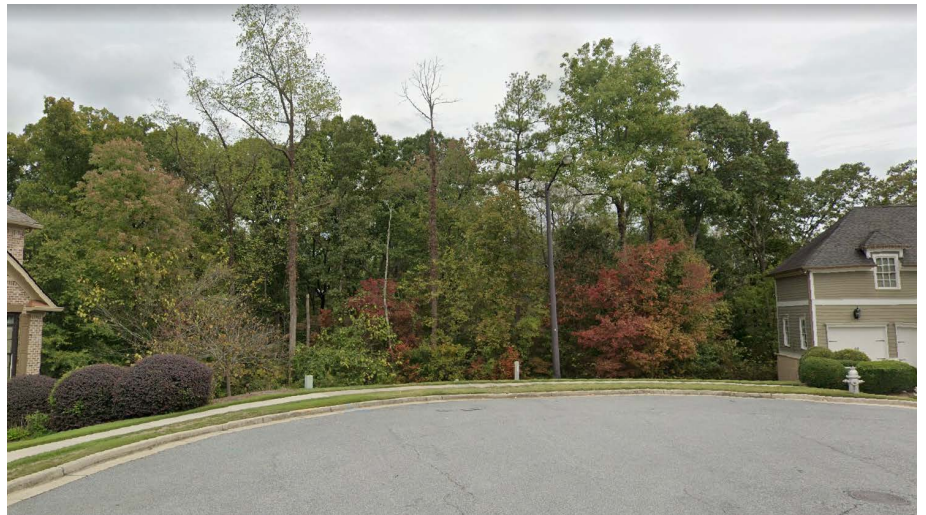
1210 Buckner Rd

MABLETON, GEORGIA 30126

±6.1 ACRES
FOR SALE

PROPERTY DETAILS

- Total Acreage: ±6.1 Acres
- Cobb County - Unincorporated
- Zoning: R-20
- Tax Parcel ID: 18005200110
- Commissioner District: 4
- Location at the end of quiet cul-de-sac on Registry Oaks Lane
- Less than 1 mile from Whitfield Academy
- Easily accessible to Veterans Memorial Hwy, I-285, & I-20
- Water & Sewer Lines in close proximity



*Every effort has been made to provide accurate information,
but no liability is assumed for errors or omissions.*

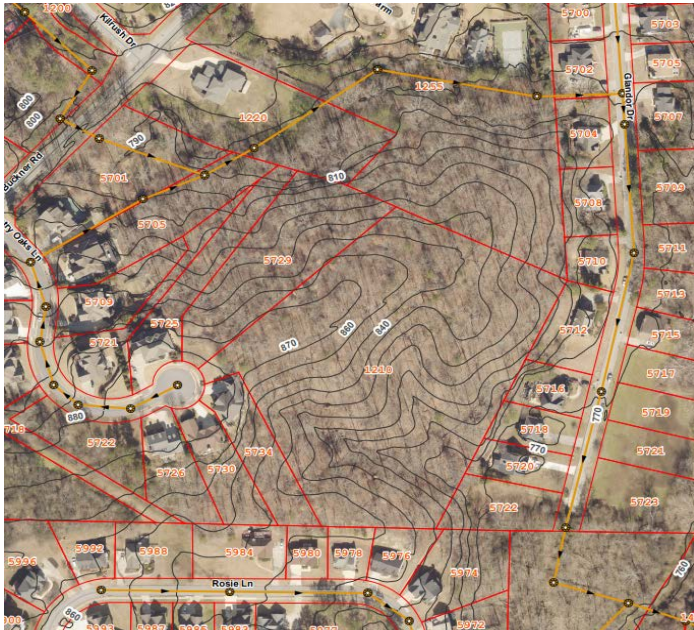
900 Circle 75 Pkwy, Ste 525
Atlanta, GA 30339
Main 404-355-9300 | FAX 404-351-6329
www.haileyrealty.com

For more information please contact:
TOMMY WATKINS, SIOR
Direct: 678-904-6803
twatkins@haileyrealty.com

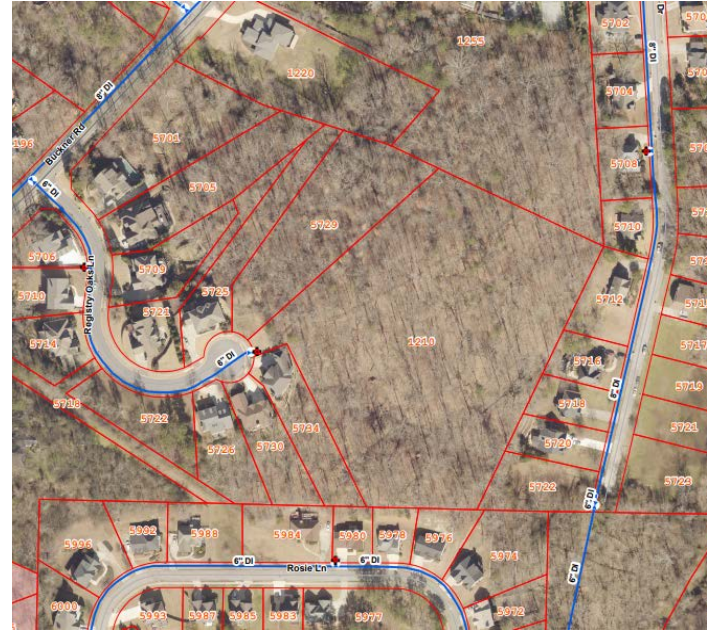
1210 Buckner Rd

MABLETON, GEORGIA 30126

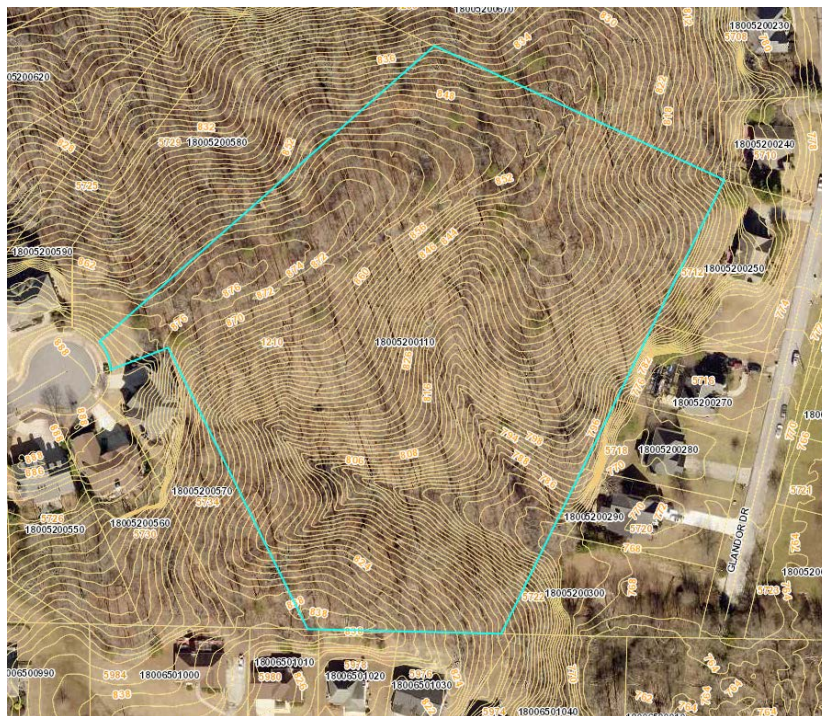
±6.1 ACRES
FOR SALE



Sewer Line



Water Line



Topography



*Every effort has been made to provide accurate information,
but no liability is assumed for errors or omissions.*

900 Circle 75 Pkwy, Ste 525
Atlanta, GA 30339
Main 404-355-9300 | FAX 404-351-6329
www.haileyrealty.com

For more information please contact:
TOMMY WATKINS, SIOR
Direct: 678-904-6803
twatkins@haileyrealty.com