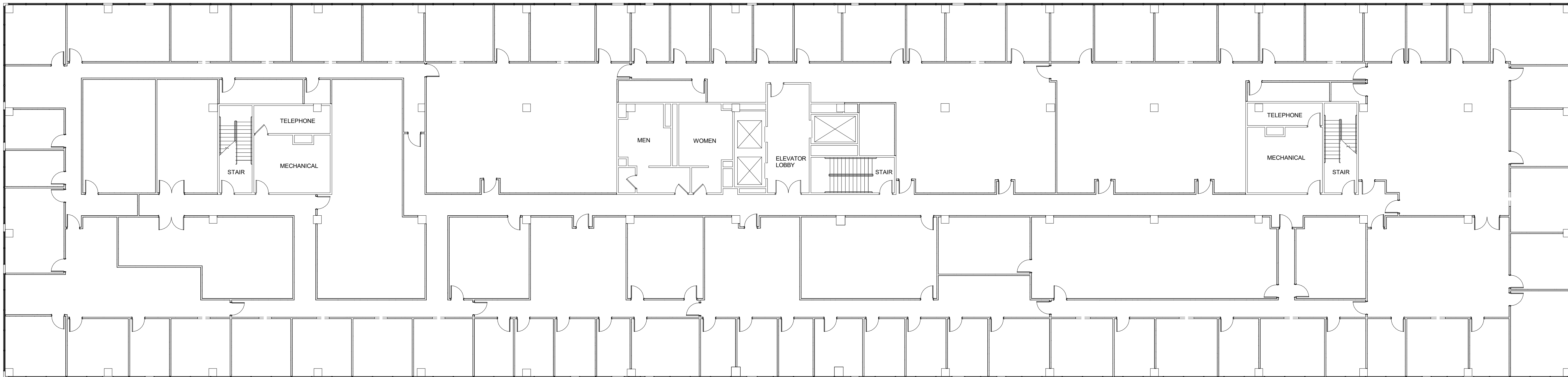


Written dimensions on these drawings shall have precedence over scaled dimensions. Contractor shall verify and be responsible for all dimensions and conditions on the job. Scott + Cormia Architecture and Interiors, LLC must be notified immediately in writing of any variation from the dimensions and conditions shown on these drawings. Field verify all conditions prior to laying out or fabricating associated work. Bring to the architect's attention any deviation from designed conditions and field conditions prior to ordering materials and installing work, and cooperate with architect to modify such conditions at no additional cost to the owner, architect or architect's consultants. Shop details must be submitted to the architect's office and reviewed by the architect prior to ordering materials, fabrication and delivery to the job site. Shop details shall be submitted to the architect and approved by the architect and interior finish consultant. Scott + Cormia Architecture and Interiors, LLC reserves its common law copyright and other property rights in these drawings and shall hold Scott + Cormia Architecture and Interiors, LLC harmless and agree to remunerate Scott + Cormia Architecture and Interiors, LLC for such use in an amount equal to the original fee for the original documents, plus legal fees, court costs, collection fees and other costs.



1 EXISTING FLOORPLAN- 3RD
SCALE: NOT TO SCALE

THIS PLAN HAS NOT BEEN SURVEYED TO ENSURE ACCURACY OF DIMENSIONS OR EXISTING AS-BUILT CONDITIONS. USE FOR REFERENCE ONLY.

project

RESEARCH COMMONS- 3RD FLOOR
EXISTING FLOORPLAN
12249 SCIENCE DRIVE
ORLANDO, FL

seal

NOT FOR BIDDING OR CONSTRUCTION

To the best of the architect's or engineer's knowledge, the plans and specifications comply with the applicable minimum building codes and the applicable fire-safety standards as determined by the local authority.

submissions

#	DATE	DESCRIPTION

drawing info

PROJECT #: 17143
DRAWN BY: KG
CHECKED BY: XXX

sheet number

EXISTING THIRD FLOOR PLAN

EX-3