

# EYDE DEVELOPMENT

1504 E. GRAND RIVER AVENUE  
EAST LANSING, MI 48823



## **FOR LEASE**

### **BUILDING SQUARE FOOTAGE:**

- 17,000 SF Building

### **ADVANTAGES:**

- Easy access to highways, US 127 and I-96
- On site covered parking available

### **FEATURES/AMENITIES:**

- Close proximity to gyms, restaurants, dry cleaners, grocery and retail

### **STRATEGIC LOCATION:**

- Strategically located on the corner of Hagadorn Road and E. Grand River Avenue
- Adjacent to Michigan State University
- Close proximity to medical and educational facilities
- High traffic count



## **CONTACT**

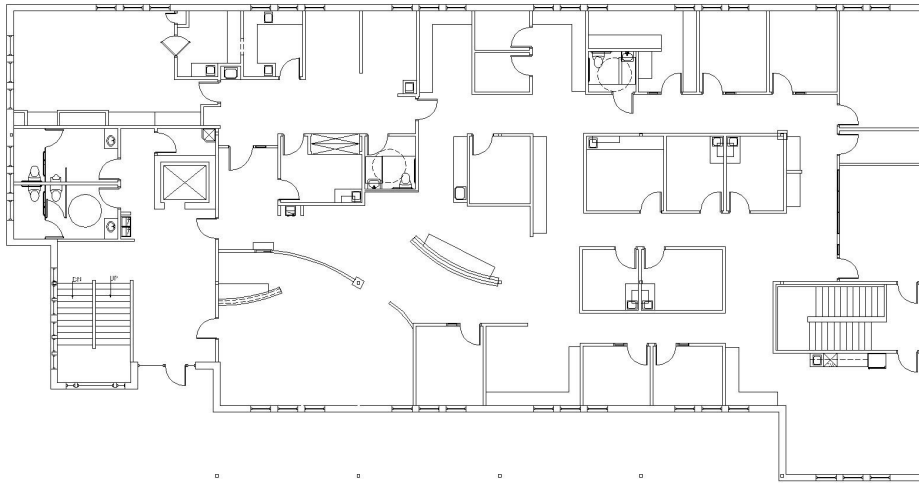
**Eyde Development**  
517-903-3933 | [eyde.com](http://eyde.com)

# EYDE DEVELOPMENT

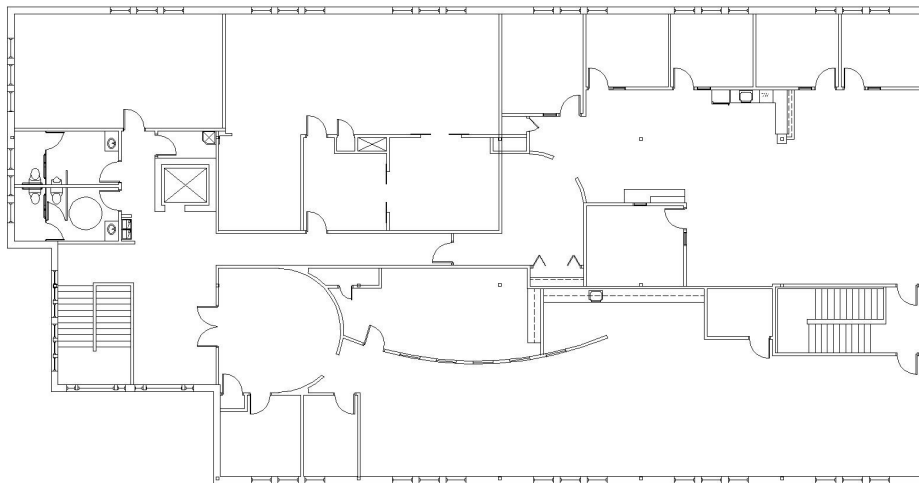
1504 E. GRAND RIVER AVENUE  
EAST LANSING, MI 48823

## FLOOR PLANS

First Floor



Second Floor



## CONTACT

**Eyde Development**  
517-903-3933 | [eyde.com](http://eyde.com)

| Eyde Development | 300 S. Washington Square #400 Lansing, MI 48933 |  
| Phone: 517-903-3933 | Fax: 517-484-5695 | [www.eyde.com](http://www.eyde.com) |