

# FOR SALE

1130 CONROY LN,  
BLDG 200  
ROSEVILLE, CA 95661

# \$1,050,000



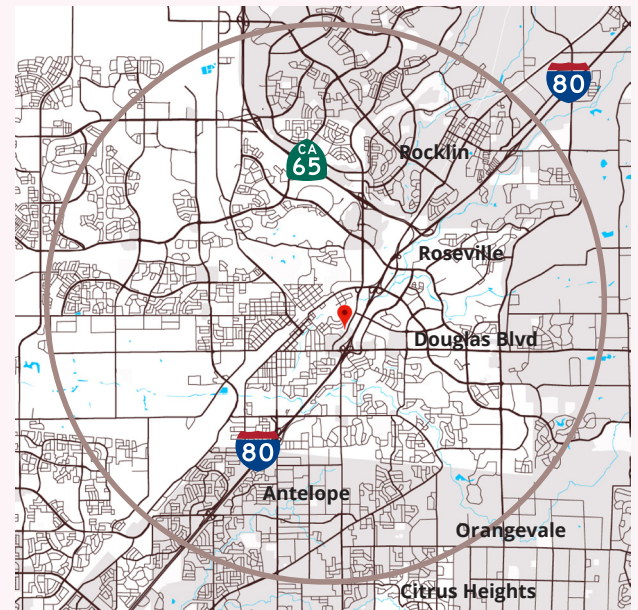
## Building 200

Ranga Pathak  
Broker Associate  
RE/MAX Gold  
CA DRE 01364897  
916-201-9247

[ranga.pathak@norcalgold.com](mailto:ranga.pathak@norcalgold.com)

### Property Highlights:

- 4,248 s.f. medical/office condominium
- Placer County APN 014-270-056-000
- Former Surgery Center with extensive plumbing
- Single Tenant building easily convertible to multi-tenant
- Ideal for an investor or owner-user to occupy all or part
- Available individually or as part of a portfolio
- Business Professional zoning
- Abundant Parking
- Easy access to highway 80
- Outstanding Roseville location



The information contained herein including square footages has been obtained from sources deemed to be reliable. RE/MAX Gold has not verified and makes no guarantees, warranties or representations regarding the accuracy of the information. You need to conduct a careful, independent evaluation of the property to establish its suitability for your purposes.

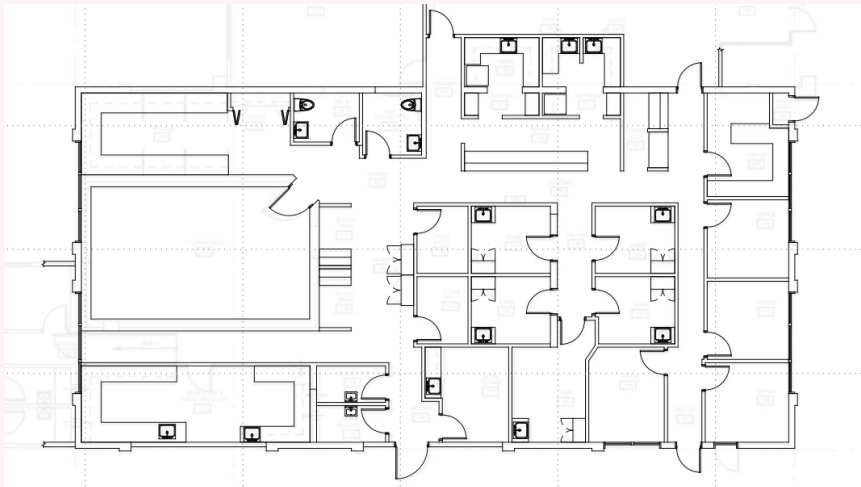
**RE/MAX**  
COMMERCIAL

# FOR SALE

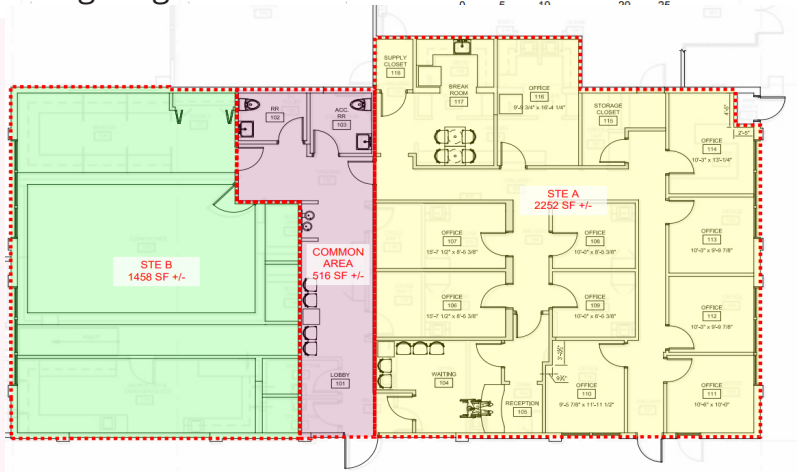
1130 CONROY LN,  
BLDG 200  
ROSEVILLE, CA 95661

Ranga Pathak  
Broker Associate  
RE/MAX Gold  
CA DRE 01364897  
916-201-9247

ranga.pathak@norcalgold.com



Existing Bldg Floor Plan



Potential Conversion to Two-Tenant Bldg



Bldg 200	
Size	4,248 SF
Sale Price	\$1,050,000
Sale Type	Owner-User
Tenants	Single or Two Tenant
Existing buildout	Professional/ Institutional/Medical