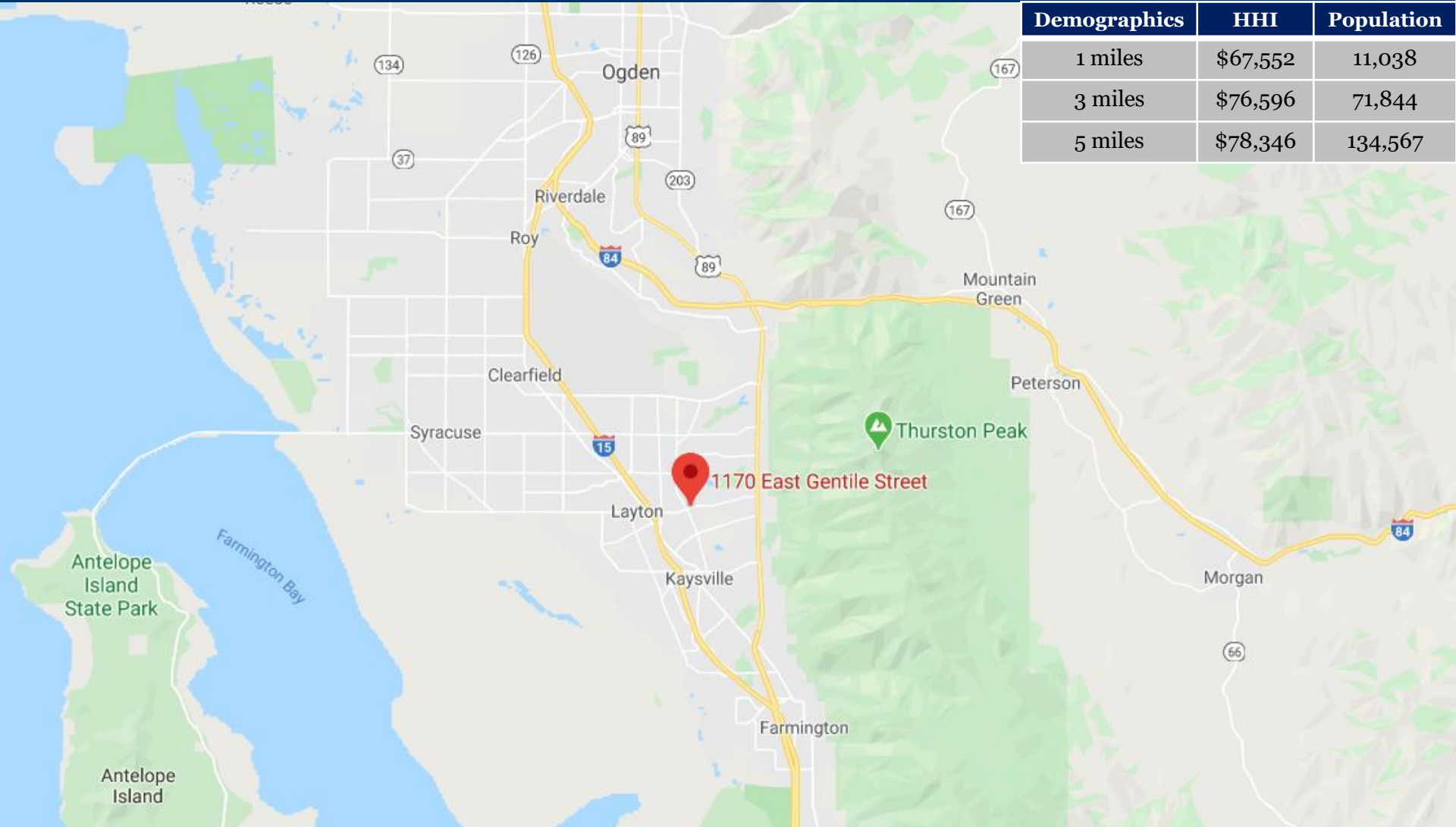


# PRIME RETAIL SPACE AVAILABLE ADJACENT TO SMITH'S DEVELOPED JOINTLY BY SOUTHEASTERN & KROGER

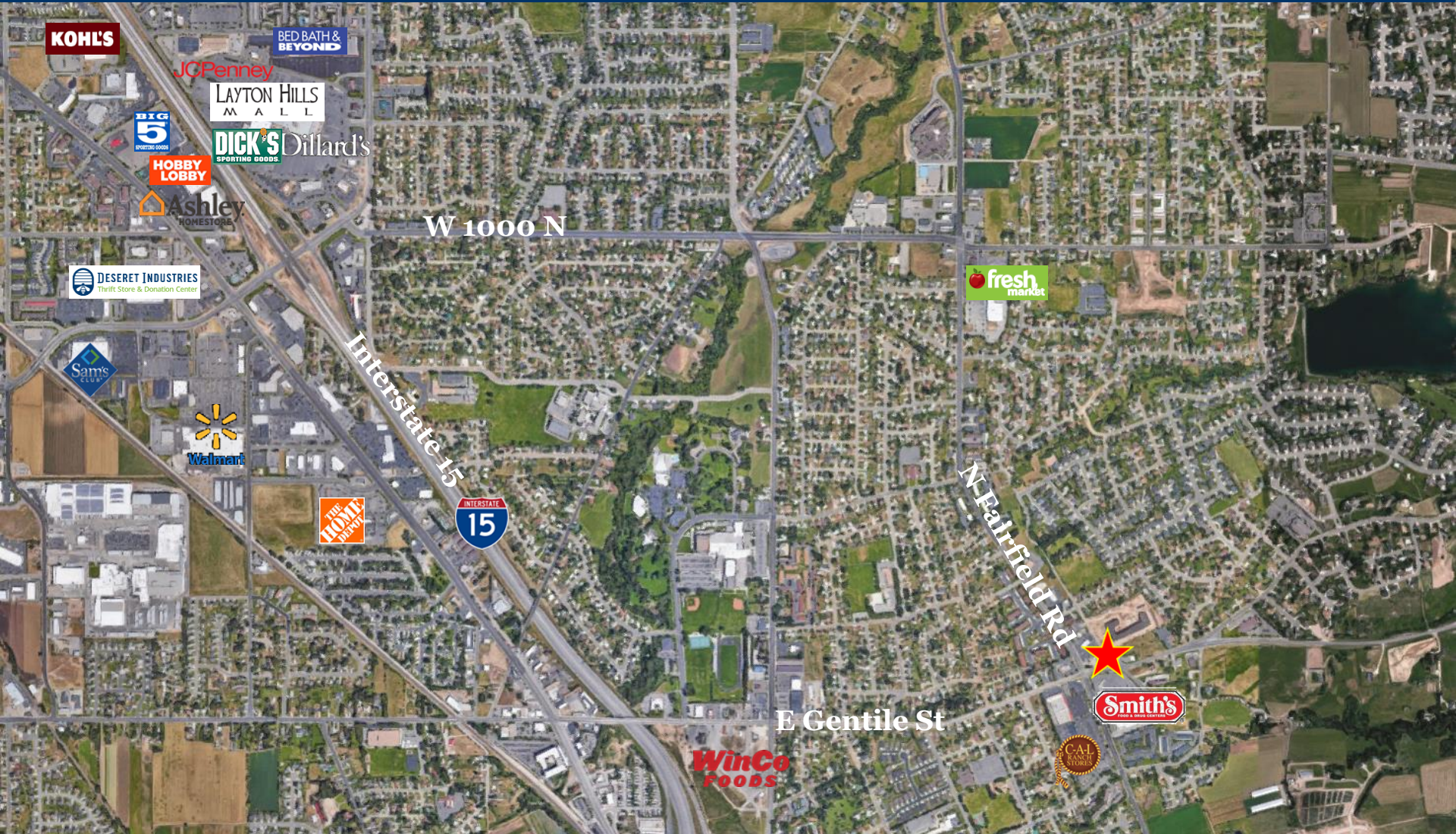


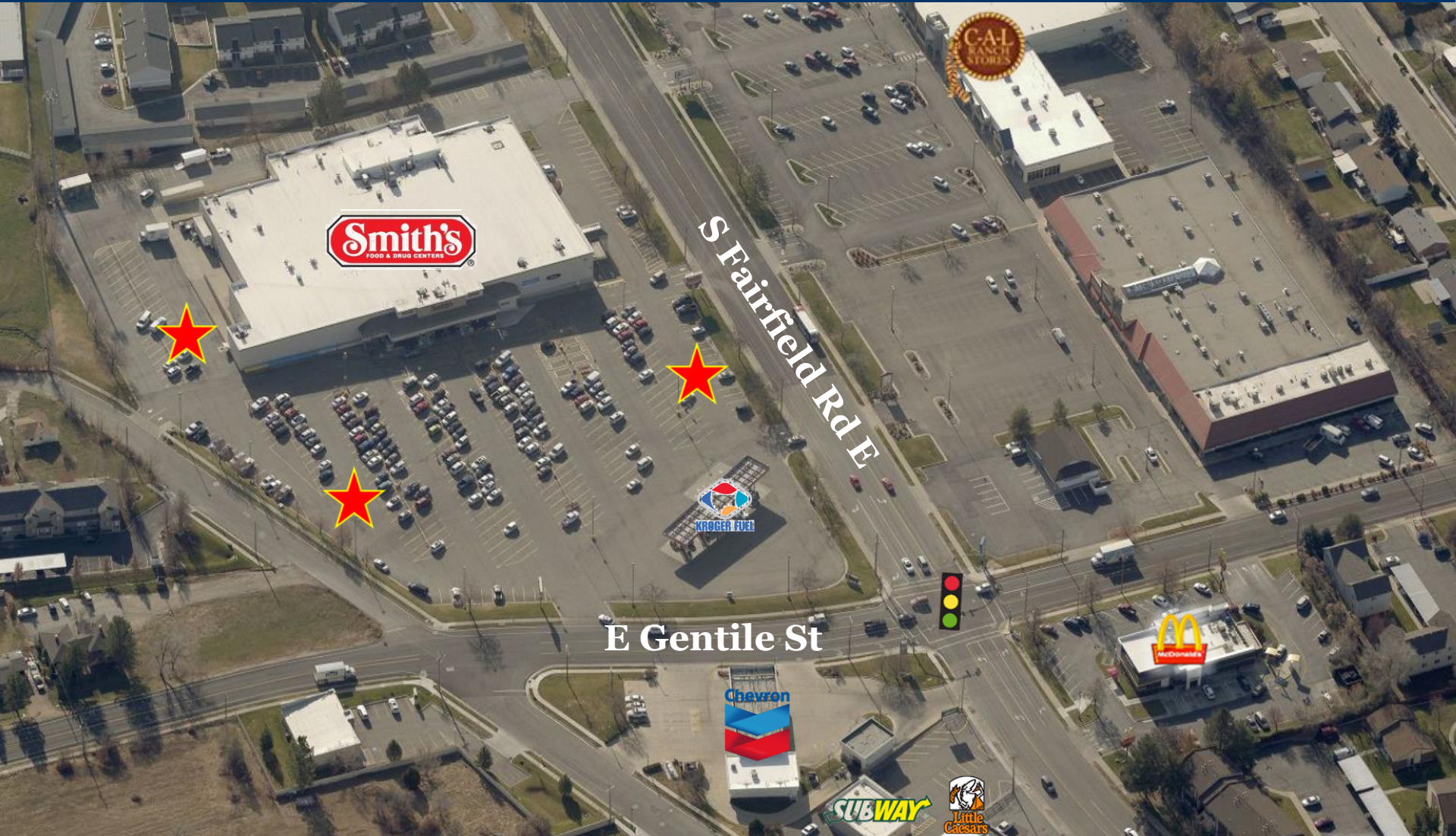
# Smith's Shopping Center Layton, UT



Demographics	HHI	Population
1 miles	\$67,552	11,038
3 miles	\$76,596	71,844
5 miles	\$78,346	134,567









## SOUTHEASTERN

DEVELOPMENT · BROKERAGE · CONSULTING

Chris Senn  
706.421.9677  
chris.senn@southeastern.company

Rhodes Seeger  
706.825.4457  
rhodes.seeger@southeastern.company

Tyler Martin  
706.831.3717  
tyler.martin@southeastern.company

Mary Senn  
706.831.5812  
mary.senn@southeastern.company

Tommy Saul  
706.831.6800  
tommy.saul@southeastern.company

Paul Xhajanka  
404.536.2627  
paul.xhajanka@southeastern.company

Jackie Kreda  
847.641.1616  
jackie.kreda@southeastern.company

Nate Collins  
817.896.0618  
nate.collins@southeastern.company

Russell Cowart  
281.705.4948  
russell.cowart@southeastern.company

