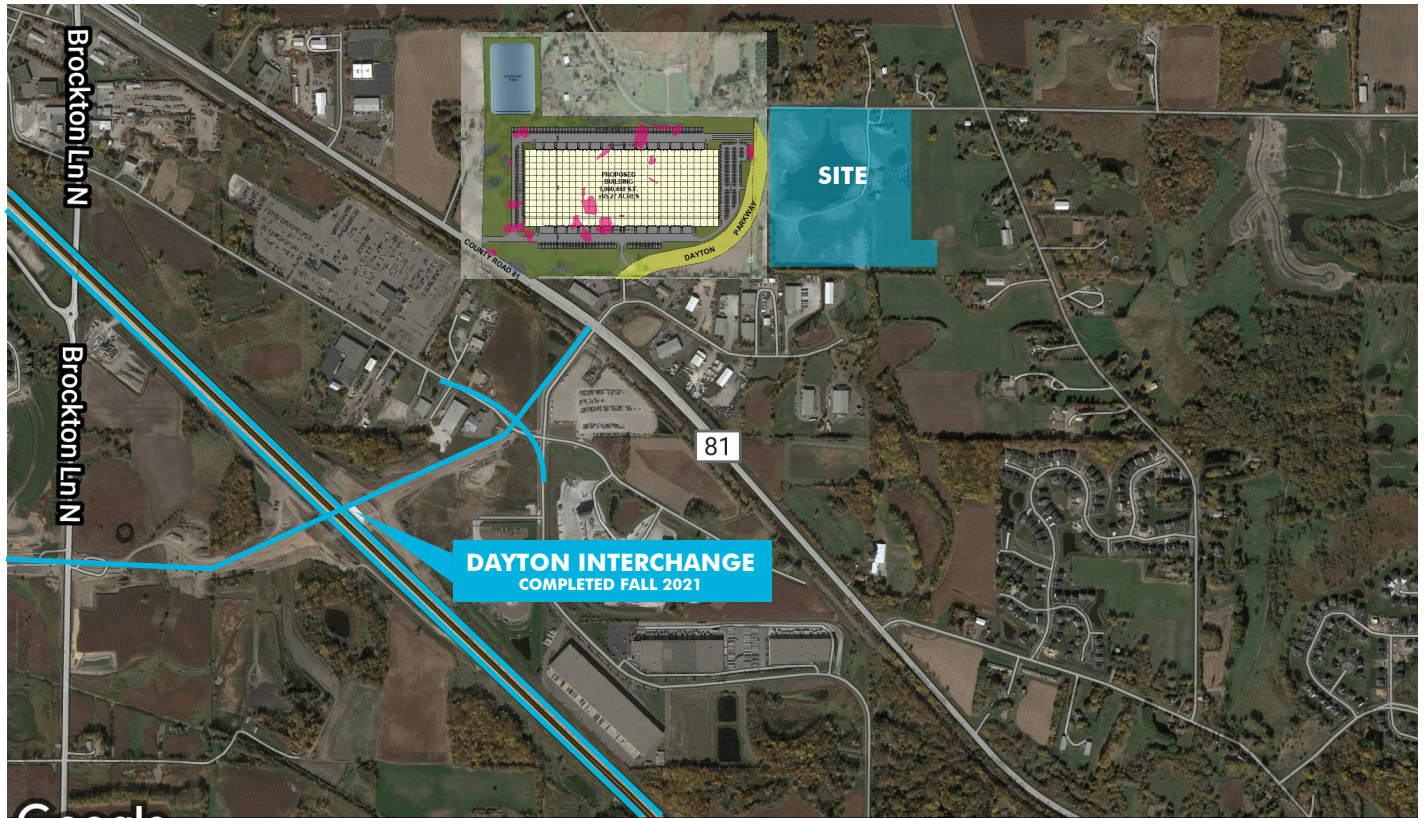


FOR SALE – 34.41 ACRES

DDL LAND

17501 117TH AVE N
DAYTON, MN 55327



LAND HIGHLIGHTS

- + 34.41 Acres Available (Divisible)
- + SALE PRICE: \$5.00 PSF
- + 2022 TAX: \$4,824.64
- + Commercial, Industrial, and Business Park uses allowed
- + Access to site via proposed extension of Dayton Parkway in 2022
- + PID: 3212022220002, 3212022220001, 3212022210007
- + Easy access with new Dayton Parkway Interchange



CONTACT US

DAN SWARTZ

Senior Vice President
+1 952 924 4652
dan.swartz@cbre.com

AUSTIN LOVIN

Associate
+1 612 336 4255
austin.lovin@cbre.com

www.cbre.us

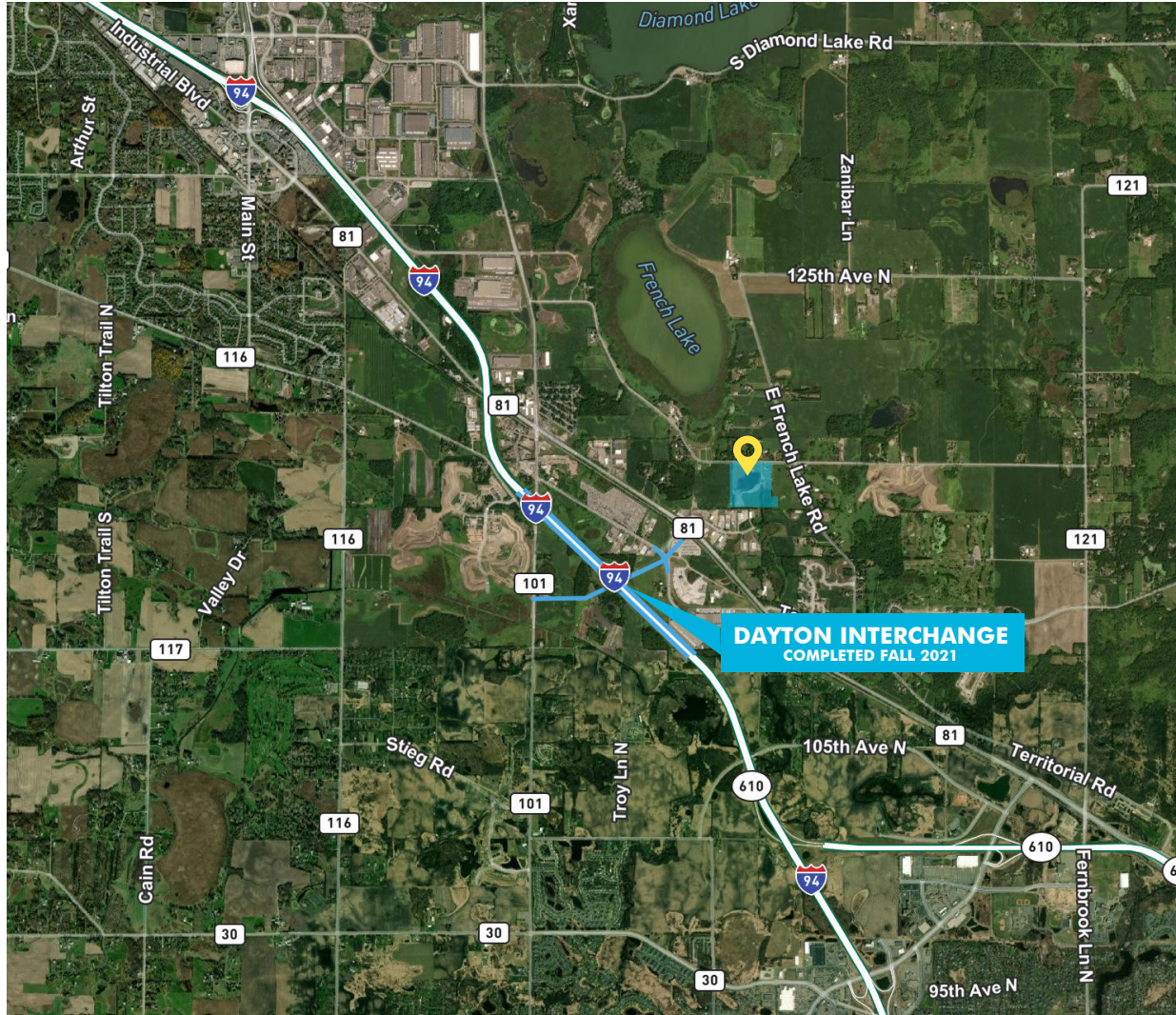
CBRE

DDL LAND

DAYTON, MN



LOCATION



© 2021 CBRE, Inc. All rights reserved. This information has been obtained from sources believed reliable, but has not been verified for accuracy or completeness. You should conduct a careful, independent investigation of the property and verify all information. Any reliance on this information is solely at your own risk. CBRE and the CBRE logo are service marks of CBRE, Inc. All other marks displayed on this document are the property of their respective owners, and the use of such logos does not imply any affiliation with or endorsement of CBRE. Photos herein are the property of their respective owners. Use of these images without the express written consent of the owner is prohibited.