

4105 WHITAKER AVE

Philadelphia, PA 19124

 FOR SALE

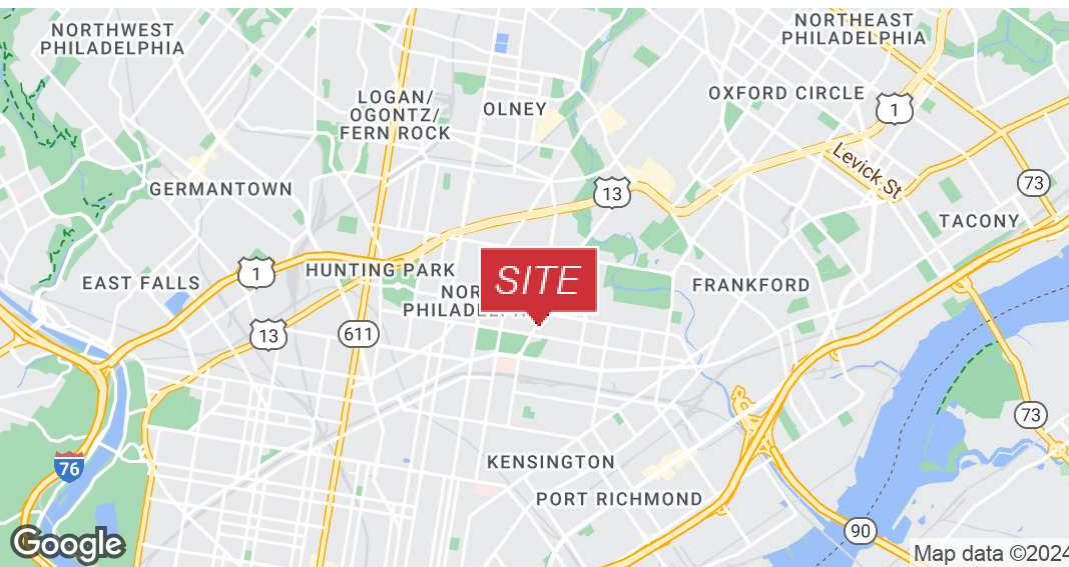
 INDUSTRIAL

 21,635 SF



PROPERTY DESCRIPTION

- Building size: 21,635 SF
- Lot size: 3.8+/- acres
- Zoning: I-2, Medium Industrial District Light/moderate impact industrial uses including manufacturing, processing and distribution
- Power & Gas: PECO
- Water & Sewer: City of Philadelphia
- Taxes: \$11,403 (2024)
- Location: Less than 2 mi. to US Route 1 and 3.3 mi. to I-95 And next to Philadelphia Police Station as well as the world renown St Christopher's Hospital for Children



FOR MORE INFORMATION

Jared Licht

 215.396.2900 x105

 jared.licht@naimertz.com


Jeffrey Licht, SIOR

 215.396.2900 x101

 jeff.licht@naimertz.com

NAI MERTZ DISCLAIMER: NO WARRANTY OR REPRESENTATION, EXPRESS OR IMPLIED, IS MADE AS TO THE ACCURACY OF THE INFORMATION CONTAINED HEREIN, AND THE SAME IS SUBMITTED SUBJECT TO ERRORS, OMISSIONS, CHANGE OF PRICE, RENTAL OR OTHER CONDITIONS, PRIOR SALE, LEASE OR FINANCING, OR WITHDRAWAL WITHOUT NOTICE, AND OF ANY SPECIAL LISTING CONDITIONS IMPOSED BY OUR PRINCIPALS NO WARRANTIES OR REPRESENTATIONS ARE MADE AS TO THE CONDITION OF THE PROPERTY OR ANY HAZARDS CONTAINED THEREIN ARE ANY TO BE IMPLIED. OUTLINES ARE APPROXIMATE AND SHOWN ONLY TO IDENTIFY THE PARCEL IN CONSIDERATION.

NAI Mertz

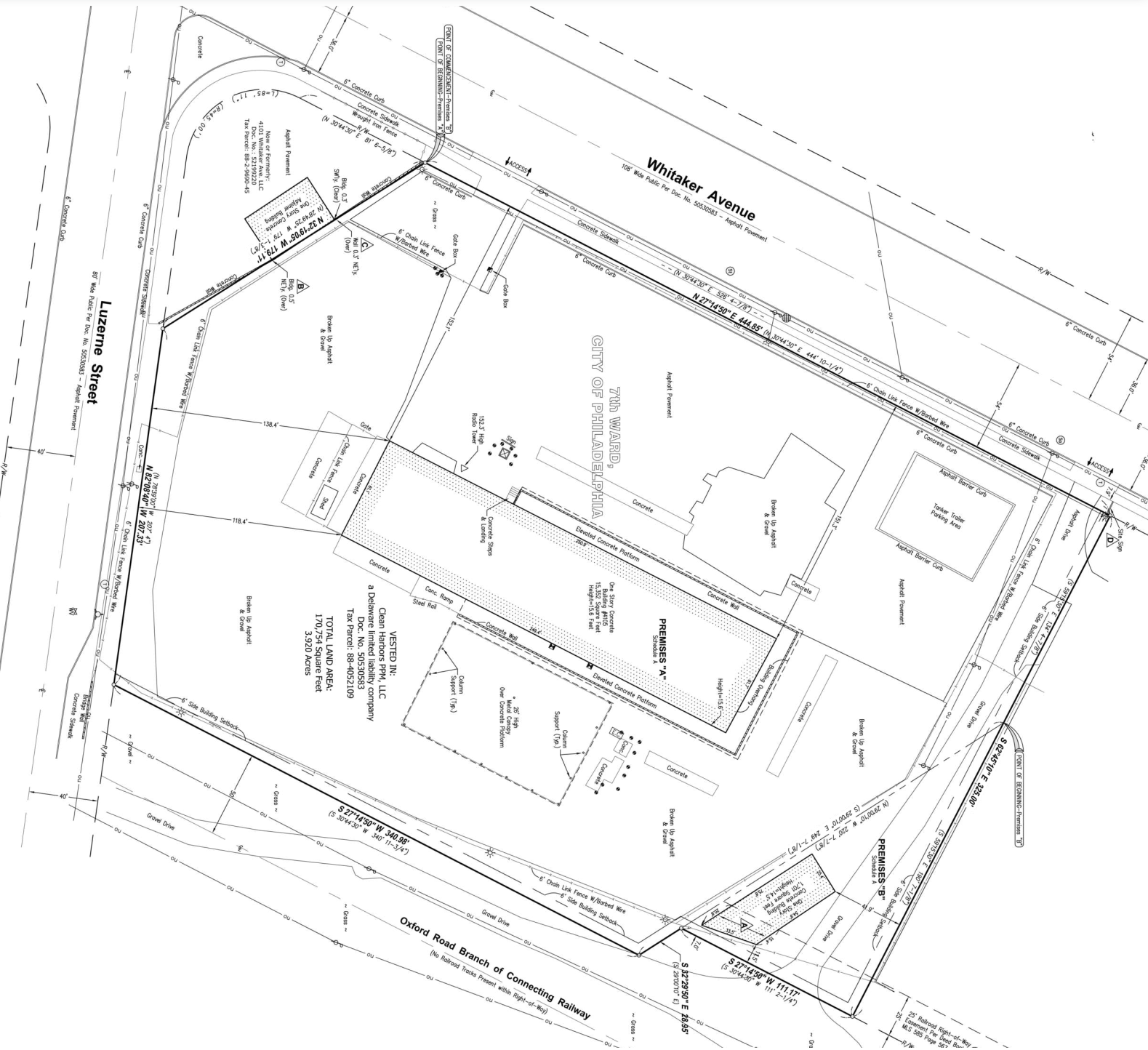
 **NAI Mertz** | 210 E. Street Road, Suite 3B
Feasterville-Treose, PA 19053
215-396-2900 | naimertz.com



4105 WHITAKER AVE



Philadelphia, PA 19124

 FOR SALE
 INDUSTRIAL
 21,635 SF




FOR MORE INFORMATION

Jared Licht
 215.396.2900 x105
 jared.licht@naimertz.com

Jeffrey Licht, SIOR
 215.396.2900 x101
 jeff.licht@naimertz.com

NAI Mertz

 NAI Mertz | 210 E. Street Road, Suite 3B
Feasterville-Trevose, PA 19053
215-396-2900 | naimertz.com

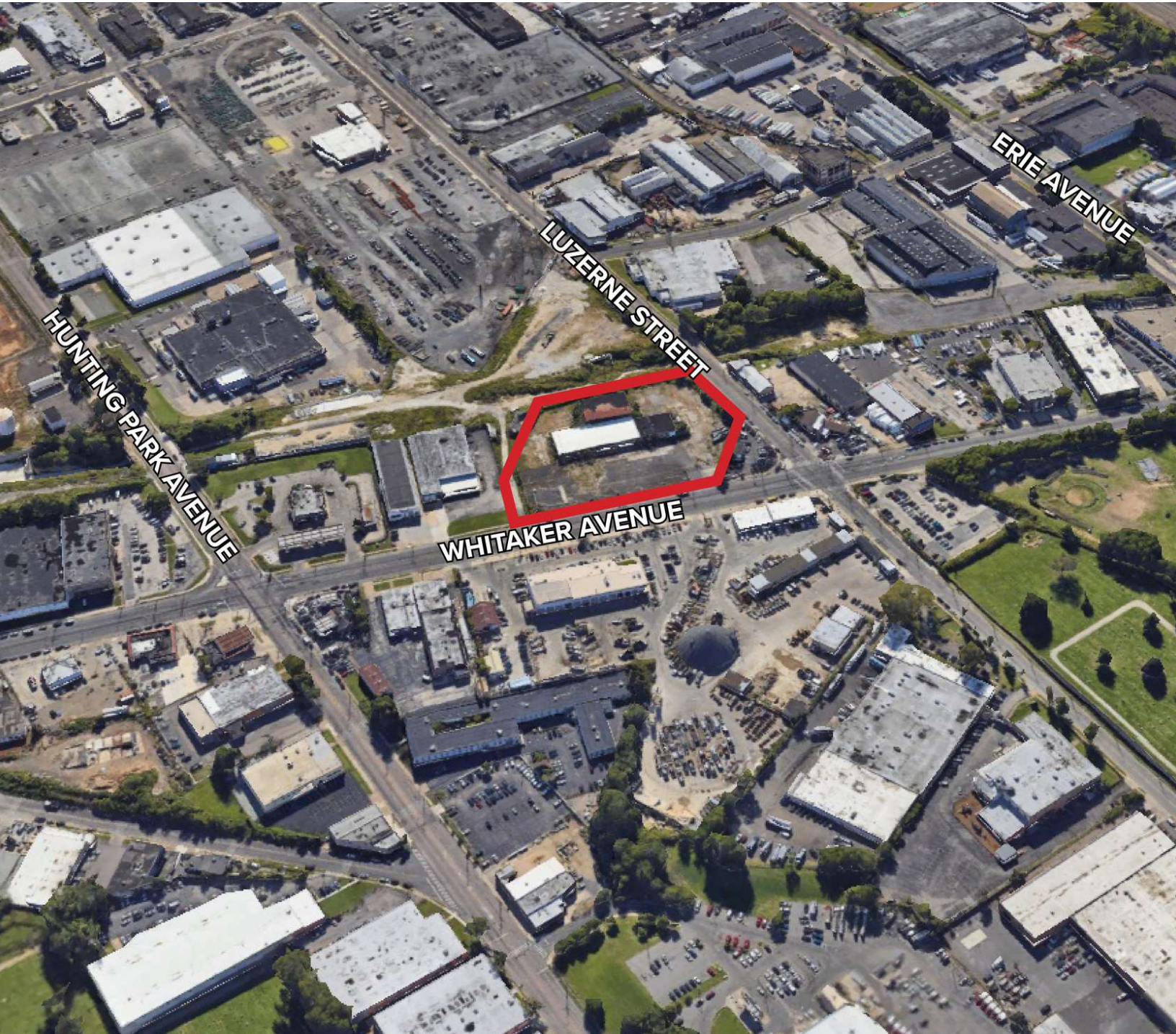
NAI MERTZ DISCLAIMER: NO WARRANTY OR REPRESENTATION, EXPRESS OR IMPLIED, IS MADE AS TO THE ACCURACY OF THE INFORMATION CONTAINED HEREIN, AND THE SAME IS SUBMITTED SUBJECT TO ERRORS, OMISSIONS, CHANGE OF PRICE, RENTAL OR OTHER CONDITIONS, PRIOR SALE, LEASE OR FINANCING, OR WITHDRAWAL WITHOUT NOTICE, AND OF ANY SPECIAL LISTING CONDITIONS IMPOSED BY OUR PRINCIPALS. NO WARRANTIES OR REPRESENTATIONS ARE MADE AS TO THE CONDITION OF THE PROPERTY OR ANY HAZARDS CONTAINED THEREIN ARE ANY TO BE IMPLIED. OUTLINES ARE APPROXIMATE AND SHOWN ONLY TO IDENTIFY THE PARCEL IN CONSIDERATION.



4105 WHITAKER AVE

4105 Whitaker Ave Philadelphia, PA 19124

 FOR SALE
 INDUSTRIAL
 21,635 SF



FOR MORE INFORMATION

Jared Licht

 215.396.2900 x105

 jared.licht@naimertz.com


Jeffrey Licht, SIOR

 215.396.2900 x101

 jeff.licht@naimertz.com

NAI MERTZ DISCLAIMER: NO WARRANTY OR REPRESENTATION, EXPRESS OR IMPLIED, IS MADE AS TO THE ACCURACY OF THE INFORMATION CONTAINED HEREIN, AND THE SAME IS SUBMITTED SUBJECT TO ERRORS, OMISSIONS, CHANGE OF PRICE, RENTAL OR OTHER CONDITIONS, PRIOR SALE, LEASE OR FINANCING, OR WITHDRAWAL WITHOUT NOTICE, AND OF ANY SPECIAL LISTING CONDITIONS IMPOSED BY OUR PRINCIPALS. NO WARRANTIES OR REPRESENTATIONS ARE MADE AS TO THE CONDITION OF THE PROPERTY OR ANY HAZARDS CONTAINED THEREIN ARE ANY TO BE IMPLIED. OUTLINES ARE APPROXIMATE AND SHOWN ONLY TO IDENTIFY THE PARCEL IN CONSIDERATION.

NAI Mertz

 NAI Mertz | 210 E. Street Road, Suite 3B
Feasterville-Trevose, PA 19053
215-396-2900 | naimertz.com

