



FOR LEASE

■ 6901 - 6945 NW LTC Parkway

6901 - 6945 NW LTC Parkway

Port Saint Lucie, FL 34986

PROPERTY OVERVIEW

Industrial/Flex space available in Midway Commerce Center. Units have overhead doors in the rear and 30% office space.

LOCATION OVERVIEW

On the southeast corner of Midway Road and LTC Parkway within the Midway Business Park. Property is just east of the I-95 and Midway Road interchange and 3.2 miles south of the Florida Turnpike interchange at Okeechobee Road.

OFFERING SUMMARY

Building Size: 25,155 SF
Available Sizes: 1,760 SF (100% Office)
2,225 SF (30% Office/70% Warehouse)
Zoning: Commercial - PUD

LEASE RATE

\$16.00 SF/yr (Gross; MG)



**JEFFREY D.
CHAMBERLIN**

PRESIDENT/BROKER, CCIM,
SIOR

Mobile 772.528.6056
chamberlin@slccommercial.com

772.220.4096 | slccommercial.com



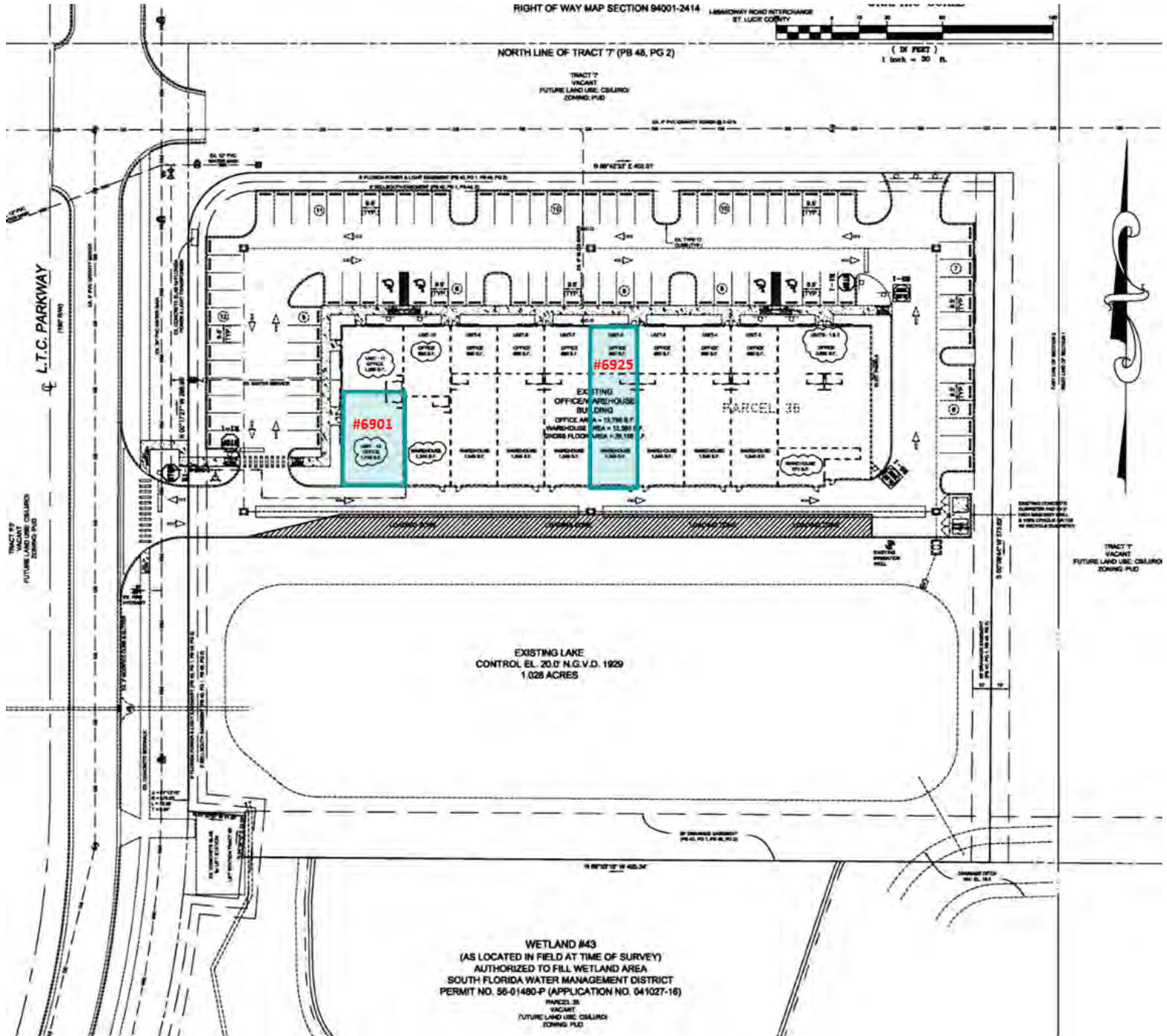
SLC Commercial
Realty & Development

The information contained herein has been obtained from sources believed to be reliable, but no warranty or representation, expressed or implied, is made. All sizes and dimensions are approximate. Any prospective buyer should exercise prudence and verify independently all significant data and property information. This is NOT an offer of sub-agency or co-brokerage.

Site Plan

MIDWAY COMMERCE CENTER

FOR LEASE



MIDWAY COMMERCE CENTER

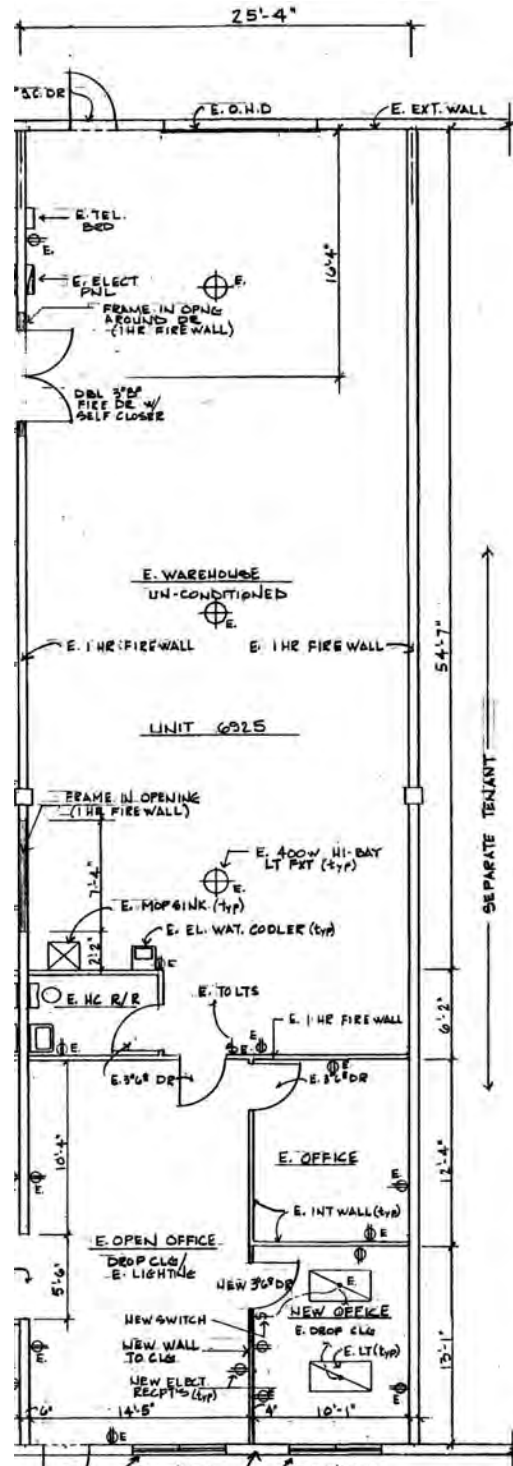
3  SLC Commercial
Realty & Development

The information contained herein has been obtained from sources believed to be reliable, but no warranty or representation, expressed or implied, is made. All sizes and dimensions are approximate. Any prospective buyer should exercise prudence and verify independently all significant data and property information. This is NOT an offer of sub-agency or co-brokerage.

6925 Floor Plan

MIDWAY COMMERCE CENTER

FOR LEASE



Zoning - Permitted Uses

MIDWAY COMMERCE CENTER

FOR LEASE



COMMERCIAL (CS/CG) PERMITTED USES

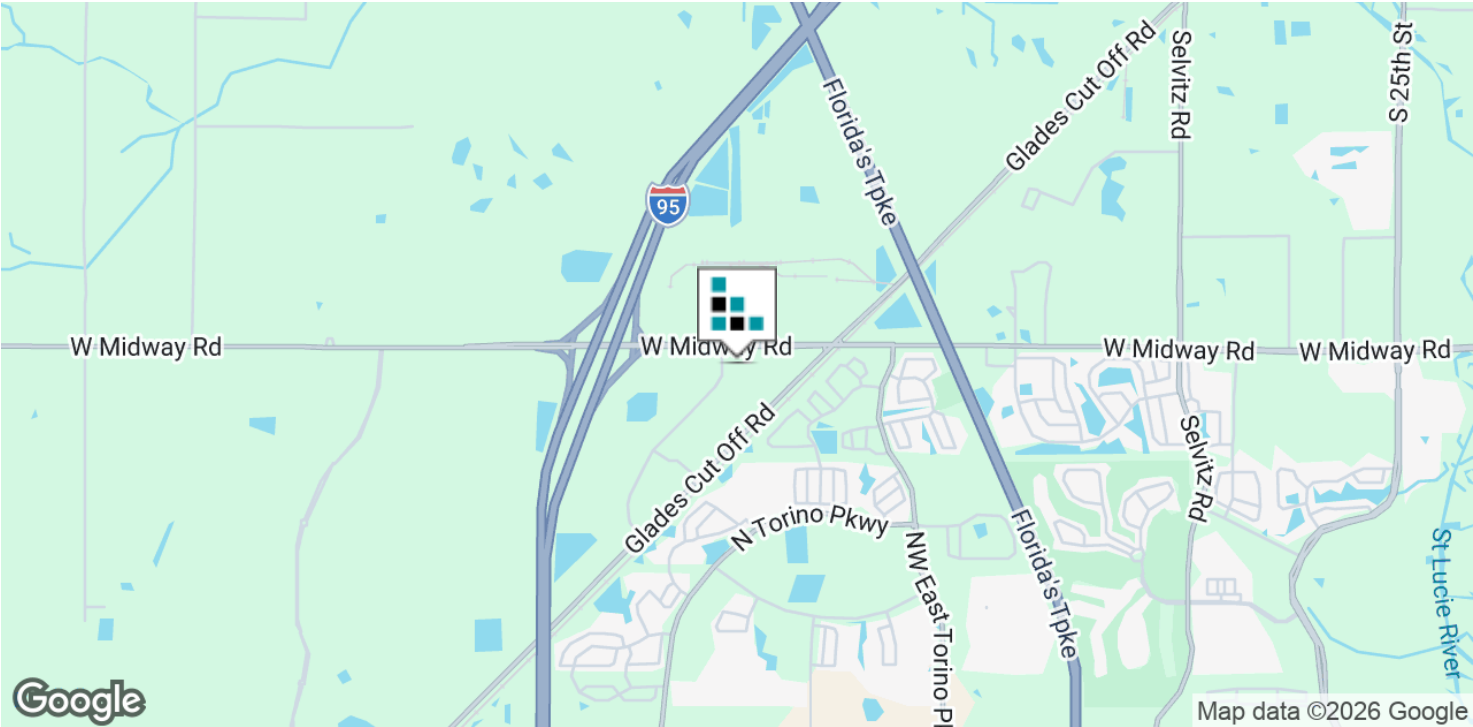
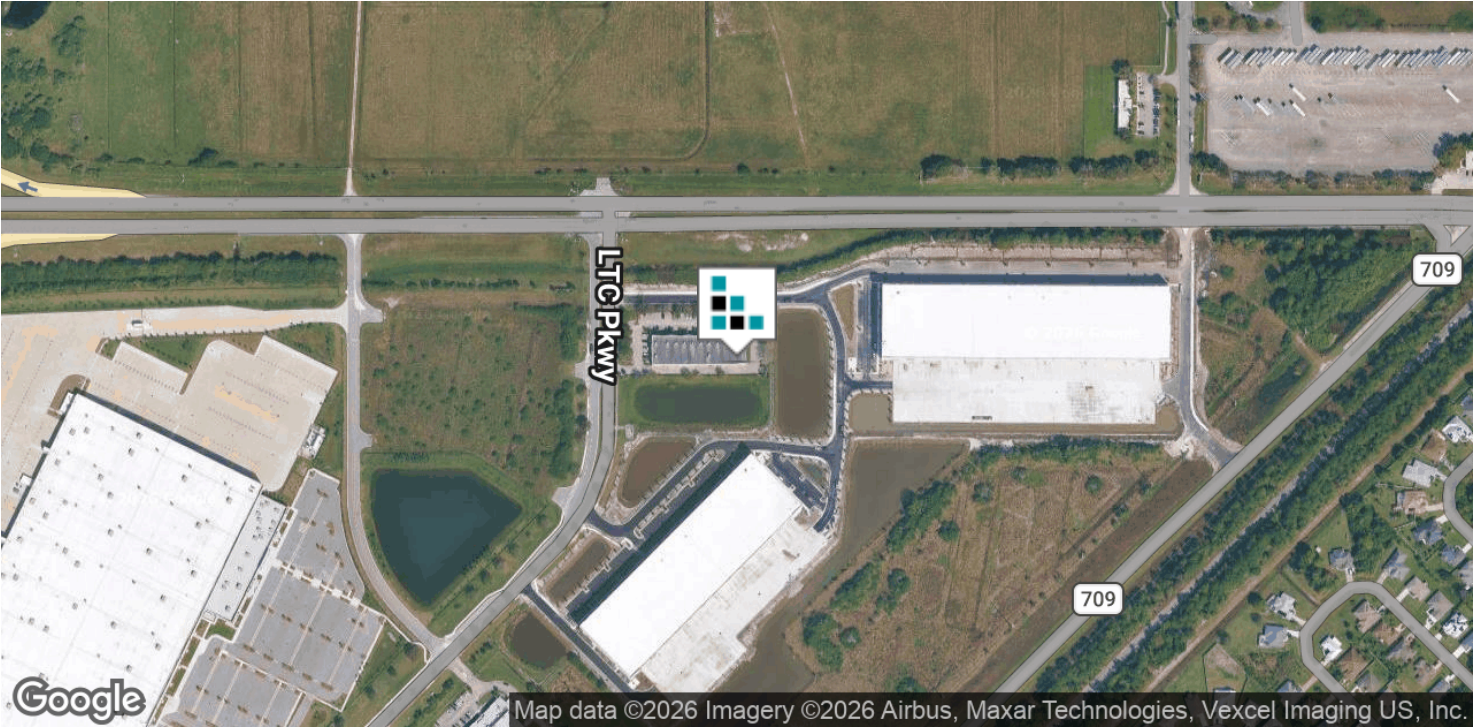
- Automotive, boat or truck repair
- Bakery
- Building material sales
- Cabinet shop
- Contractor's shop
- Sign company
- Semi-public facility or use
- Trade shop (roofing, plumbing, electrical, and the like)
- Wholesale establishment
- Food processing facility
- Manufacturing and assembly associated with warehousing, storing, processing and packages of goods and materials
- Public facility or use
- Analytical laboratory
- Equipment rental business
- Warehousing and mini-warehouses
- Commercial driving school
- Gymnastic school
- Indoor shooting facility
- Other uses as listed in LTC Ranch PUD



Location Maps

MIDWAY COMMERCE CENTER

FOR LEASE



The information contained herein has been obtained from sources believed to be reliable, but no warranty or representation, expressed or implied, is made. All sizes and dimensions are approximate. Any prospective buyer should exercise prudence and verify independently all significant data and property information. This is NOT an offer of sub-agency or co-brokerage.

Disclaimer

MIDWAY COMMERCE CENTER

FOR LEASE

This presentation package has been prepared by the company representing the property for informational purposes only and does not purport to contain all information necessary to reach a purchase decision.

The information herein has been given by the Owner or other sources believed to be reliable, but it has not necessarily been independently verified by the Company representing the property and neither its accuracy nor its completeness is guaranteed.

This information is subject to errors, omissions, changes, prior sale or withdrawal without notice by the Company representing the property and does not constitute a recommendation, endorsement or advice as to the value for the purchase of any property. Each prospective lessee or purchaser is to rely upon his/her own investigation, evaluation and judgment as to the advisability of leasing or purchasing the property.

Furthermore, any financial information and calculations presented in this analysis are believed to be accurate, but are not guaranteed and are intended for the purposes of projection and analysis only. The user of this financial information contained herein should consult a tax specialist concerning his/her particular circumstances before making any investment.