

# 256 WEST 38TH STREET

BETWEEN 7TH & 8TH AVENUES | GARMENT DISTRICT





# 256 WEST 38TH STREET

BETWEEN 7TH & 8TH AVENUES | GARMENT DISTRICT

## PROPERTY HIGHLIGHTS

- High foot traffic area
- Prime retail corridor
- Neighboring tenants include:  
*Dunkin', Black Iron Burger, Angelina Bakery, Doxie Hotel, Star Fabric, District Tap House, 21 Pilates, Mr Broadway, Citizens Bank, & more!*

**SIZE:** 2,967 SF Ground Floor  
727 SF Mezzanine  
2,745 SF Basement

**FRONTAGE:** 25'

**CEILING HEIGHT:** ~16'

**POSSESSION:** ASAP

**ASKING RENT:** Upon Request

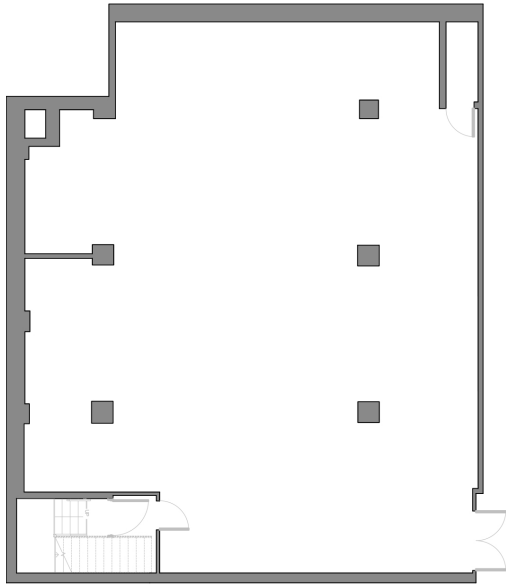
**TRANSPORTATION:** 1 2 3 7 A C E N Q R W



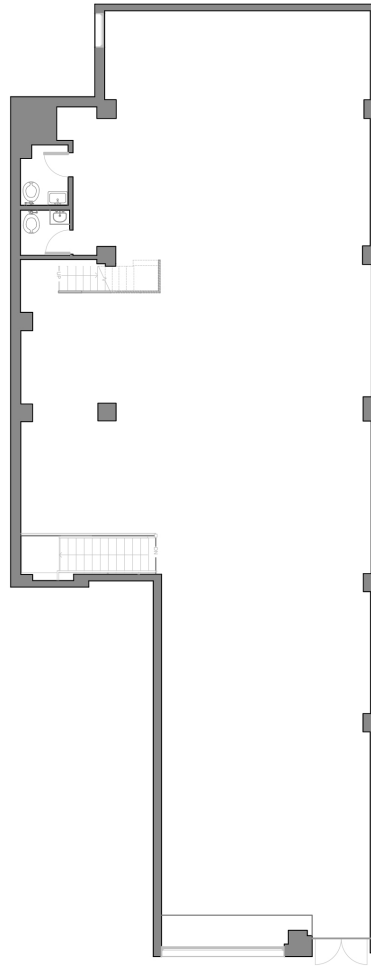
# 256 WEST 38<sup>TH</sup> STREET

BETWEEN 7<sup>TH</sup> & 8<sup>TH</sup> AVENUES | GARMENT DISTRICT

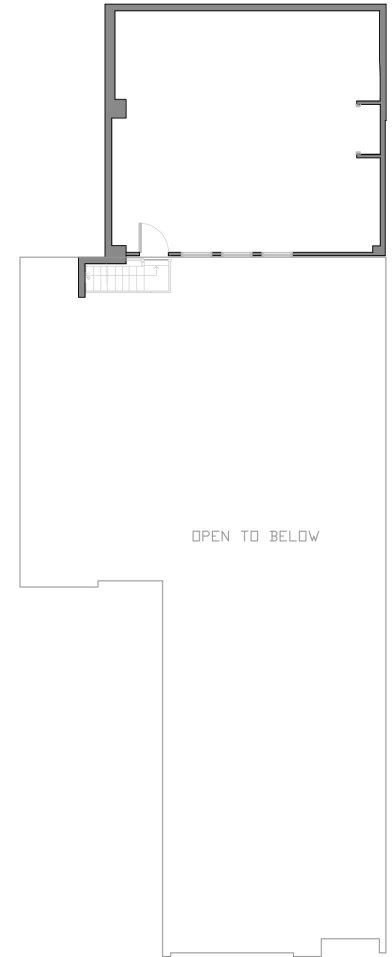
## FLOOR PLANS:



Basement  
2,745 SF



Ground Floor  
2,967 SF



Mezzanine  
727 SF

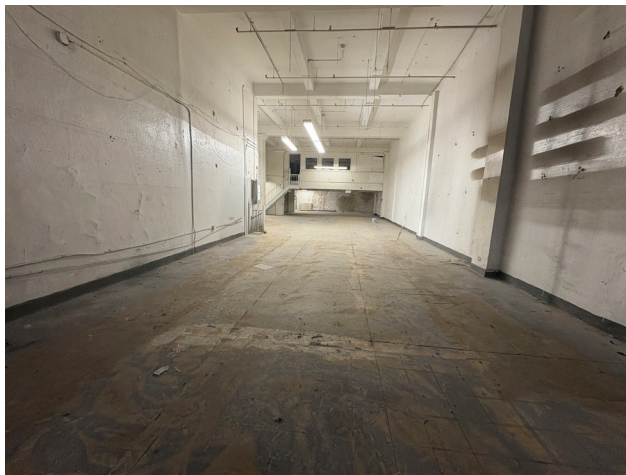
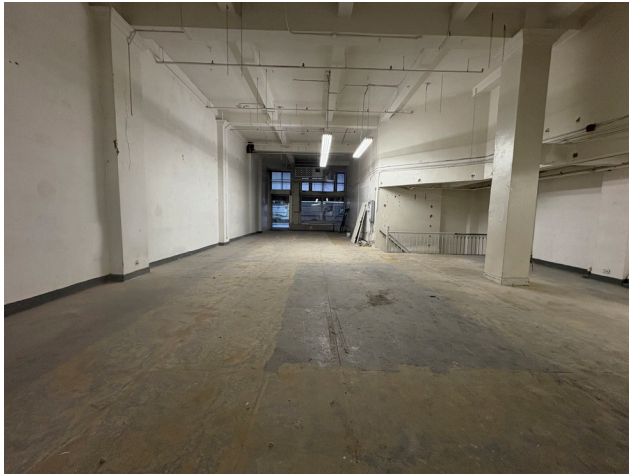


All information supplied in this marketing presentation and/or flyer is from sources deemed reliable and is furnished subject to errors, omissions, modifications, removal of listings from sale/lease and to any listing condition. Any square footage, dimensions, floor plans and/or technical data set forth are approximations and are subject to further elaboration/confirmation.

# 256 WEST 38<sup>TH</sup> STREET

BETWEEN 7TH & 8TH AVENUES | GARMENT DISTRICT

## INTERIORS:



All information supplied in this marketing presentation and/or flyer is from sources deemed reliable and is furnished subject to errors, omissions, modifications, removal of listings from sale/lease and to any listing condition. Any square footage, dimensions, floor plans and/or technical data set forth are approximations and are subject to further elaboration/confirmation.



# 256 WEST 38<sup>TH</sup> STREET

---

BETWEEN 7<sup>TH</sup> & 8<sup>TH</sup> AVENUES | GARMENT DISTRICT

FOR MORE INFORMATION,  
PLEASE CONTACT:

**MADDY SOFFER**

347.752.3350 | [MSoffer@ksrny.com](mailto:MSoffer@ksrny.com)

**CAROLINA AZIZ**

516.640.6961 | [CAziz@ksrny.com](mailto:CAziz@ksrny.com)

**IKE BIBI**

347.417.2860 | [IBibi@ksrny.com](mailto:IBibi@ksrny.com)

