

Colliers

LEASED

LEASED

AVAILABLE

79th St

FOR LEASE

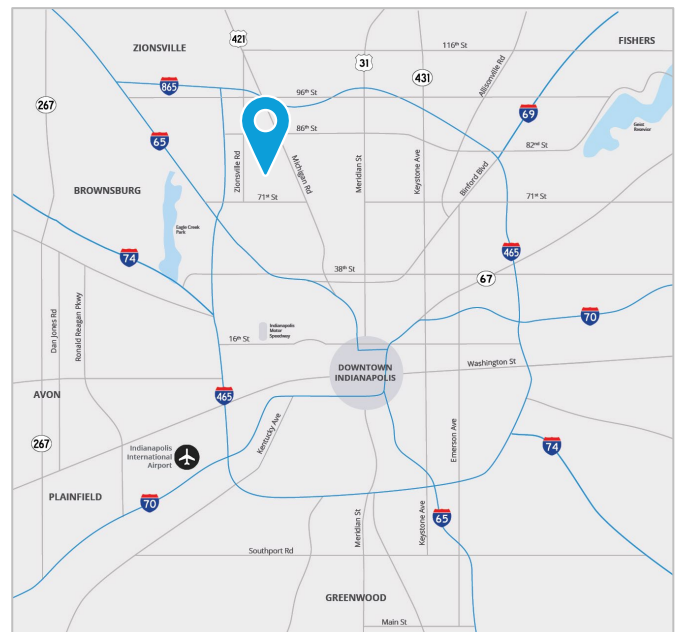
5000 W 79th St

Indianapolis, IN 46268

## Rare Opportunity for Outdoor Storage in Park 100

### Property Highlights

- ± 1.5 Usable Acres of Outdoor Storage Immediately Available
- Zoned I-1 & I-3
- Multiple ingress and egress points
- 1.3 miles to I-465
- ± 4 miles to I-65
- Located in the heart of Park 100



George Manley  
+1 317 713 2166  
george.manley@colliers.com

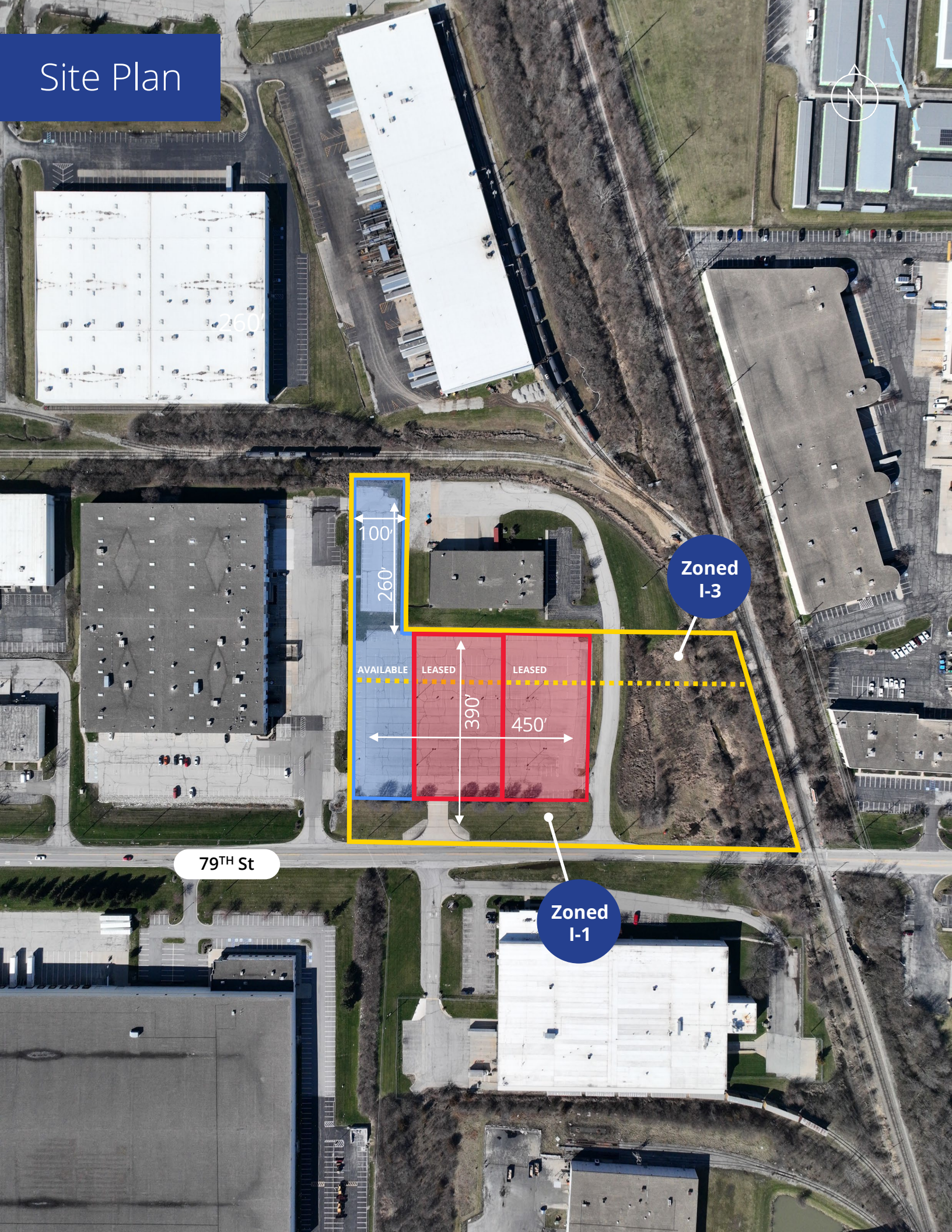
Matt McGrady SIOR  
+1 317 713 2125  
matt.mcgrady@colliers.com

Cody Riles  
+1 317 228 5202  
criles@prologis.com

Owned by:  PROLOGIS

Colliers Indianapolis  
[colliers.com](https://colliers.com)

# Site Plan



260'

100'  
260'

Zoned  
I-3

AVAILABLE

LEASED

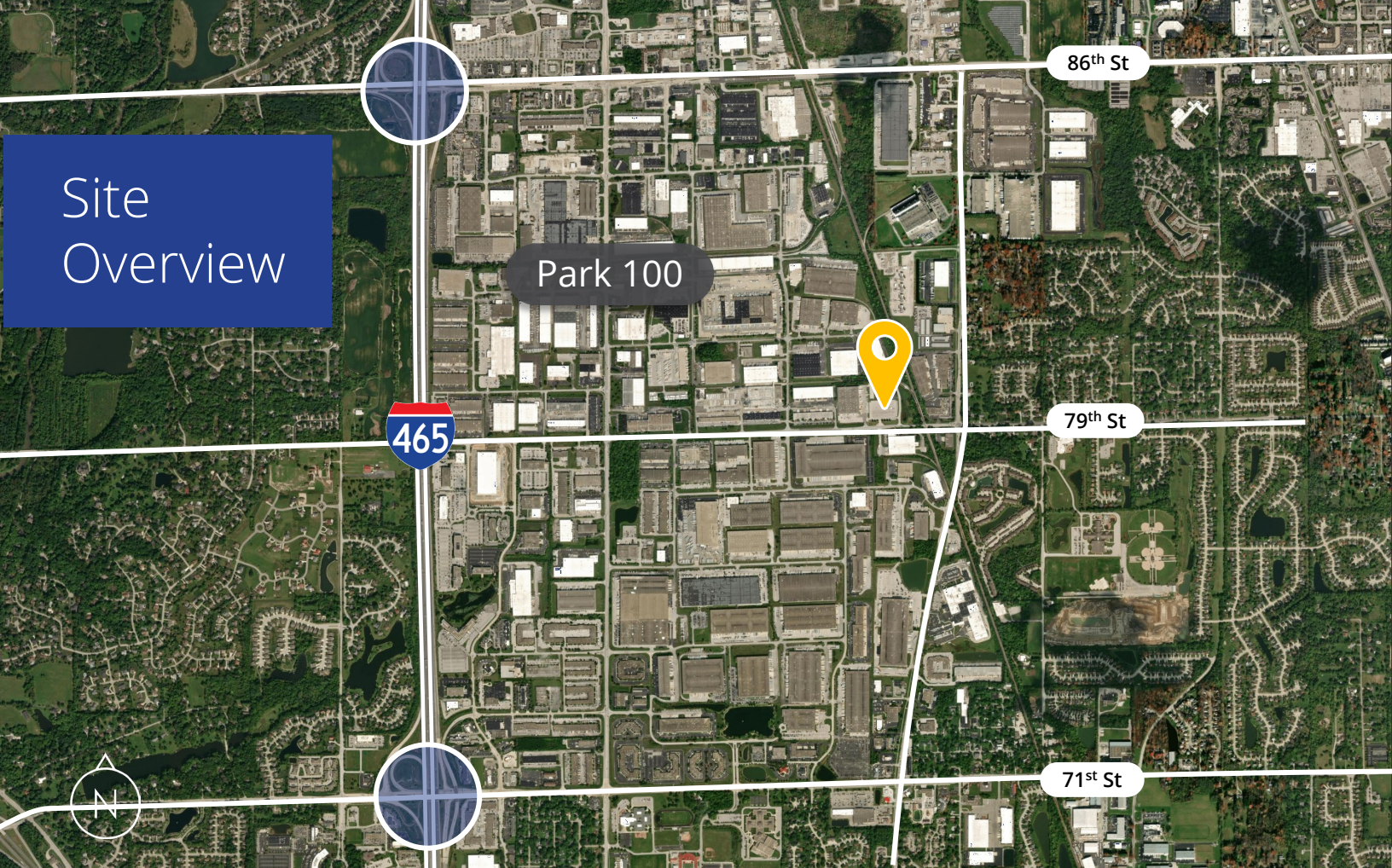
LEASED

390'

450'

79<sup>TH</sup> St

Zoned  
I-1



# Why Indiana



## INDIANAPOLIS INT'L AIRPORT

- 2<sup>nd</sup> largest FedEx air hub worldwide
- Serves as FedEx's national aircraft maintenance operations
- 8<sup>th</sup> largest cargo airport in U.S
- 11<sup>th</sup> year named "Best Airport in North America"



## INDIANA AIRPORTS — LOGISTICS NETWORK

- Commercial/Freight users have 5 airports to access
- GCIA – a key economic driver in NW Indiana, awarded \$6M federal grant to expand/upgrade its air cargo infrastructure



<b>IND</b>	Indianapolis Int'l Airport
<b>EW</b>	Evansville Regional Airport
<b>FWA</b>	Fort Wayne Int'l Airport
<b>GCIA</b>	Gary/Chicago Int'l Airport
<b>SBN</b>	South Bend Int'l Airport



## INDIANA ROADS — UNRIVALED CONNECTIVITY

- 8 interstates intersect the state making Indiana #1 in U.S. in pass-thru highways
- I-65 and I-70, both considered major NAFTA logistic corridors & part of the IFDC network (*Inland Freight Distribution Cluster*)
- 40+ major cities & 75% of U.S. population within 1-day drive
- 5<sup>th</sup> busiest state for commercial freight traffic



## INDIANA RAIL — A STRONG TRACK RECORD

- 3 Class 1 systems pass thru — CSXT, Canadian National, Norfolk Southern, plus 39 Class II & Class III railroads
- 4<sup>th</sup> in U.S. in number of railroads operating — 7<sup>th</sup> in carloads handled — 10<sup>th</sup> in millions of tons handled
- Indiana's freight traffic flow forecast to increase 60% by 2040
- Extensive transloading capabilities via privately-owned Indiana Rail Road Co., a 500-mile railroad logistics provider with national rail network access via Chicago/Indy gateways

“Over the last decade, Indiana has ranked as a Top-10 performer in landing corporate facility investment projects in the nation.”

– Site Selection Magazine

\*sources: Forbes Magazine, Site Selection Magazine, Business Facilities



## INDIANA PORTS — UNMATCHED ACCESS TO BIG INDUSTRY

- 3 international maritime ports provide global access to the world's most productive industrial & agricultural regions
- Bringing \$7.8B per year to Indiana's economy, handling over 25M tons of cargo yearly

<b>NW</b>	Burns Harbor
<b>SE</b>	Jeffersonville
<b>SW</b>	Mt Vernon

George Manley  
+1 317 713 2166  
george.manley@colliers.com

Matt McGrady SIOR  
+1 317 713 2125  
matt.mcgrady@colliers.com

Cody Riles  
+1 317 228 5202  
criles@prologis.com

