



MEDICAL OFFICE

# SPACE FOR LEASE



## Princeton III

833 PRINCETON AVENUE  
BIRMINGHAM, AL 35211

### PROPERTY HIGHLIGHTS

- The Princeton facility consists of over 252,000 s.f.
- Current tenant mix includes a variety of medical specialties and diagnostic services including cancer treatment, cardiac services, diagnostic imaging, neurosurgery, pulmonary medicine and wound care

### LOCATION OVERVIEW

Located on the campus of Princeton Baptist Medical Center.



For More Information:

**GARY GAGNE**

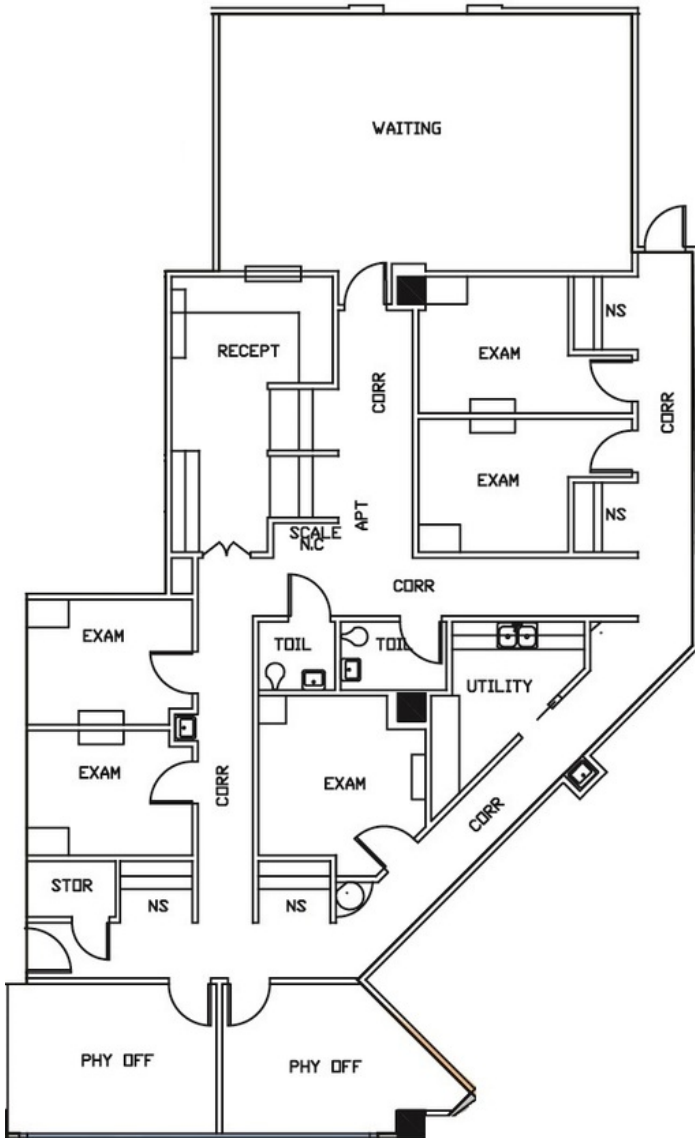
561.354.4846

ggagne@welltower.com

[medicaloffice.welltower.com](http://medicaloffice.welltower.com)

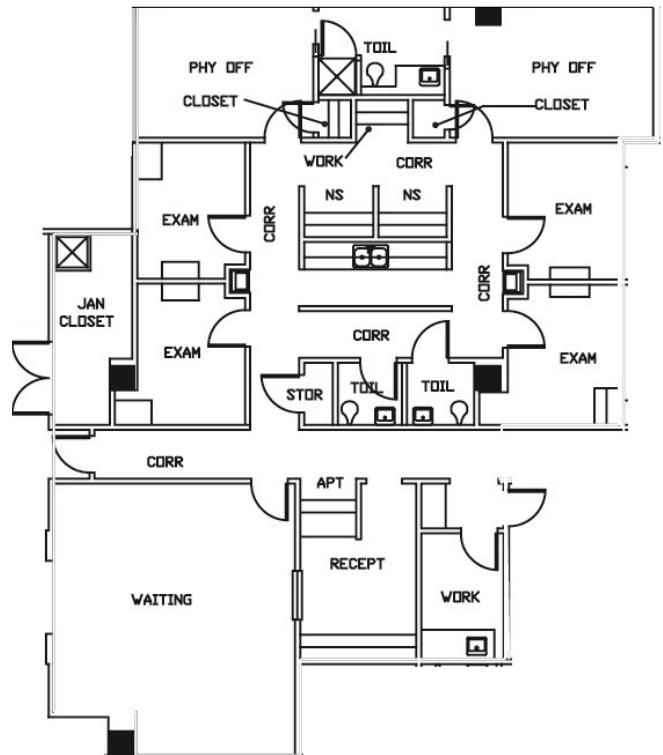


## AVAILABLE SPACES



SUITE 200-F

3,934 RSF



SUITE 200-G

3,306 RSF

For More Information:

**GARY GAGNE**

561.354.4846

ggagne@welltower.com

[medicaloffice.welltower.com](http://medicaloffice.welltower.com)



# PRINCETON III

## DEMOGRAPHICS MAP



### POPULATION

#### 1 MILE

#### 3 MILES

#### 5 MILES

Total population	11,538	82,805	187,579
Median age	34.8	36.0	35.0
Median age (Male)	32.7	34.3	33.7
Median age (Female)	36.0	37.7	36.1

### HOUSEHOLDS & INCOME

#### 1 MILE

#### 3 MILES

#### 5 MILES

Total households	4,666	33,855	77,127
# of persons per HH	2.5	2.4	2.4
Average HH income	\$28,010	\$35,918	\$46,046
Average house value	\$76,342	\$80,085	\$119,291

\* Demographic data derived from 2010 US Census

For More Information:

**GARY GAGNE**

561.354.4846

ggagne@welltower.com

[medicaloffice.welltower.com](http://medicaloffice.welltower.com)

