

FOR LEASE



9 Cornell Rd
Latham, NY

Karen Wentz

Licensed Associate Real Estate Broker

Cell. 516-317-3184

KarenWentz@HannaCRE.com

Jessica Richer

Licensed Associate Real Estate Broker

Cell. 518-364-7406

JessicaRicher@HannaCRE.com

Features

9 Cornell Rd, Latham

PROPERTY HIGHLIGHTS

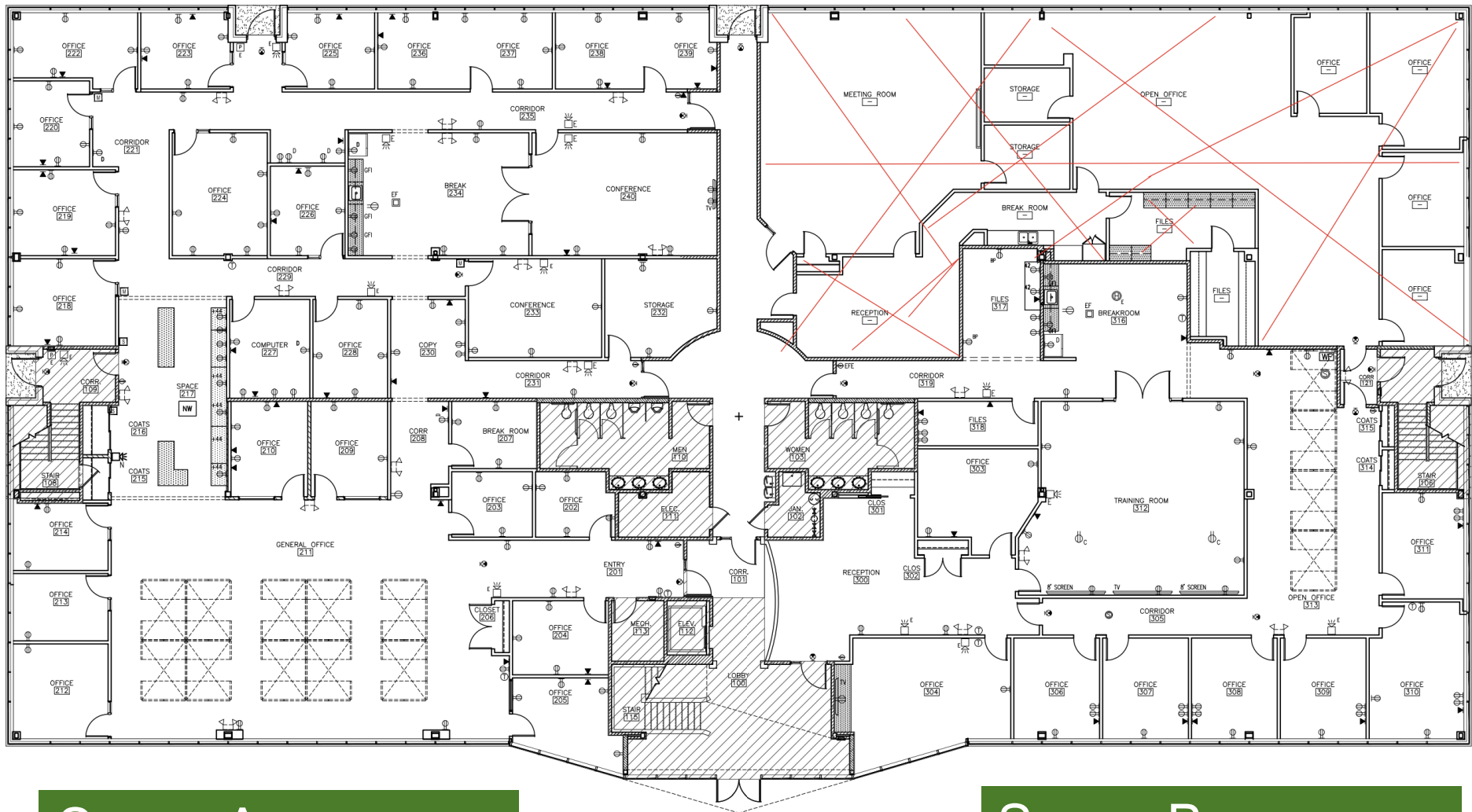
- First Floor Office Spaces for Lease
- Space A – 9,056 RSF
- Space B – 5,052 RSF
- Zoning: OR
- 4 EV (8 Plug-ins) Charging Station
- Utilities Municipal
- 7 Minute Drive to I 87
Wolf Rd Corridor

RATE: \$12.00/SF + Nets
3 Year Term Minimum



SPACE LAYOUT Floor Plan

9 Cornell Rd , Latham



Space A 9,056 RSF

Space B 5,052 RSF

THE RICHER TEAM AT



20 Aviation Road | Albany, NY 125

eCalculations, photos and data presented are deemed to be accurate, but not guaranteed. Data, photos and calculations are intended for the purpose of illustrative projections and analysis. Information provided is not intended to replace or serve as substitute for any legal, accounting, investment, real state, tax or other professional advice, consultation or service. The user of this information should consult with a professional in the respective legal, accounting, tax or other professional area before making any decisions.

SPACE A Photos

9 Cornell Rd , Latham



SPACE B Photos

9 Cornell Rd , Latham



THE RICHER TEAM AT



9 Cornell Rd
Latham, NY

Karen Wentz

Licensed Associate Real Estate Broker
Cell. 516-317-3184
KarenWentz@HannaCRE.com

Jessica Richer

Licensed Associate Real Estate Broker
Cell. 518-364-7406
JessicaRicher@HannaCRE.com