



Modera Midtown

95 8th Street

Atlanta, GA

Whitney Spangler

Senior Vice President
+1 404 574 1046

whitney.spangler@colliers.com

David Martos

Senior Associate
+1 404 574 1003

david.martos@colliers.com

Property Details

4,463 SF Space Available with Patio

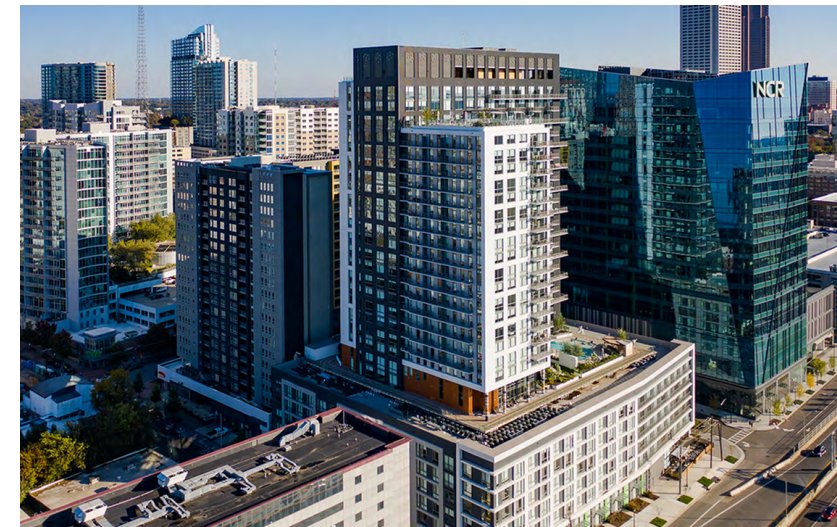
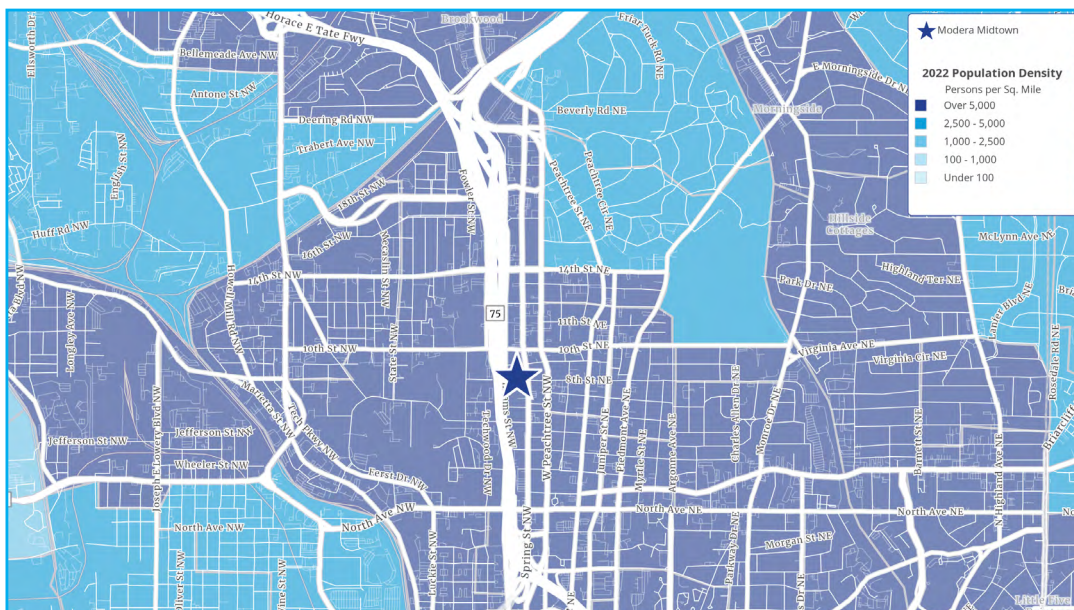
- Located at the corner of 8th Street and Williams Street, directly across from NCR's headquarters
- 435 luxury units located directly above street level retail with excellent visibility
- Blocks away from multiple student housing developments
- Parking spaces available in onsite deck

	1 mile	3 miles	5 miles
Total Population	47,433	196,872	397,658
Total Households	24,444	97,055	188,293
Average HH Income	\$155,074	\$140,393	\$137,249
Daytime Population	120,511	393,859	694,615

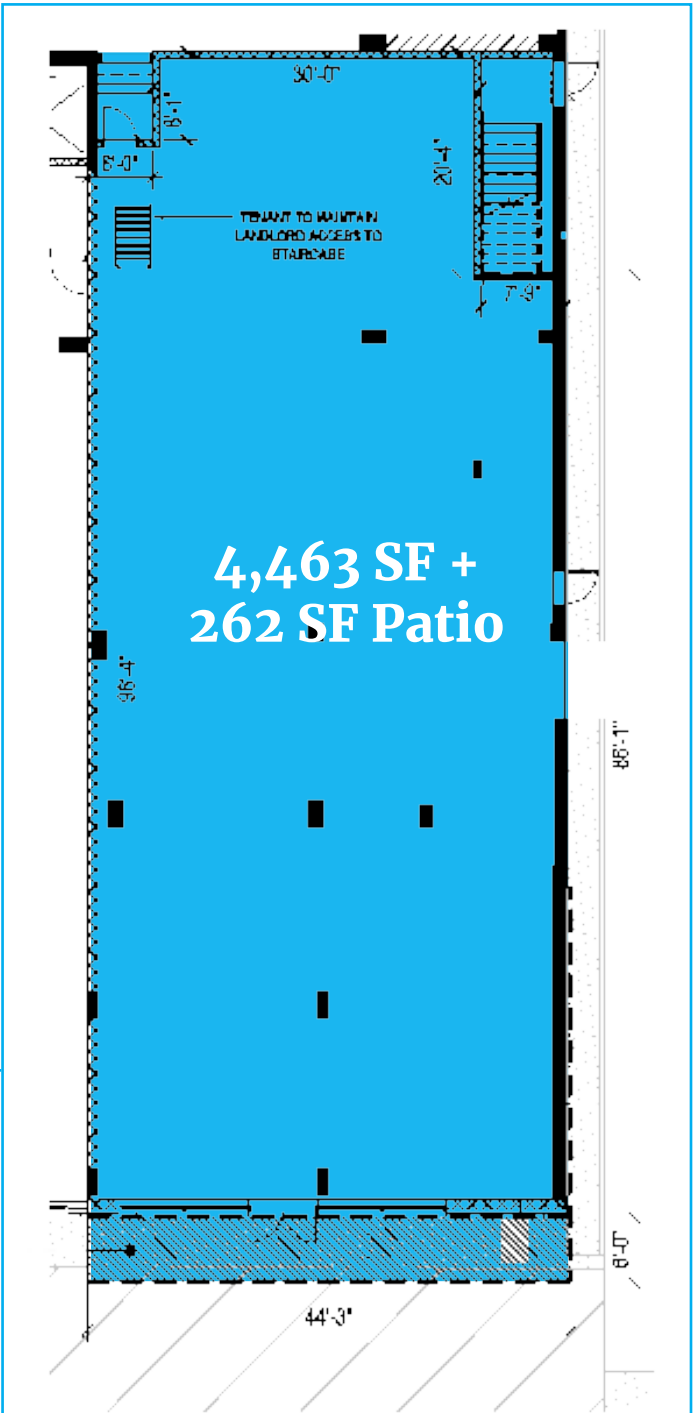
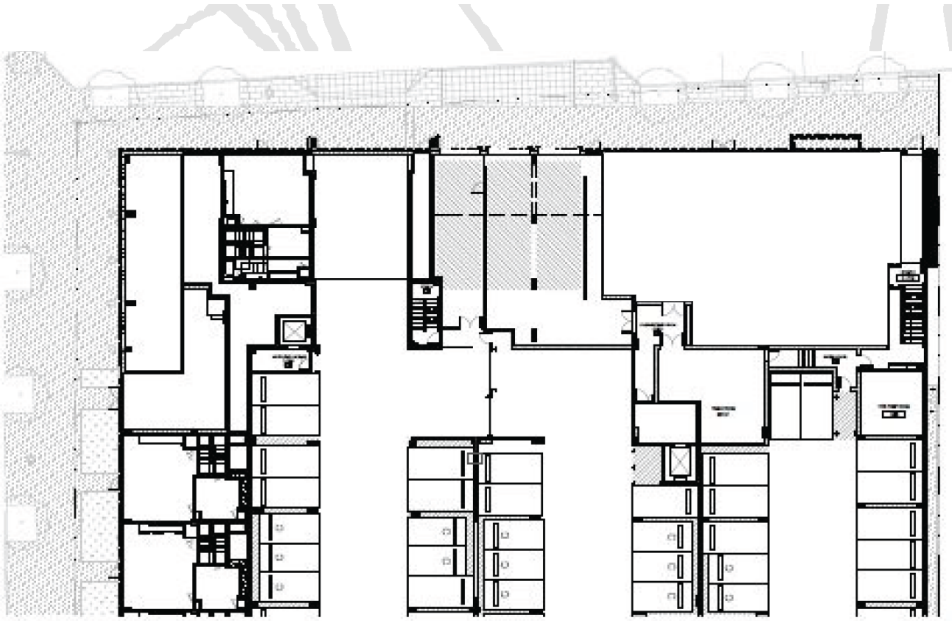


358,000 VPD
Hwy-75

25,500 VPD
W Peachtree



Site Plan



4,463 SF +
262 SF Patio

Retail Trade Area

