

WILLIAMSBURG, BROOKLYN

728 BROADWAY

MOD

Retail Space For Lease



SPACE DETAILS

LOCATION

Between Flushing Avenue & Thornton Street

SPACE

Ground Floor: 2,100 SF + Basement

FRONTAGE

30 Feet

CEILING HEIGHTS

10 Feet

POSSESSION

Immediate

ASKING RENT

Upon Request

NEIGHBORS

Sonic, Burger King, McDonald's, Popeyes, Snipes, TD Bank, Dunkin', Chase, Burlington, Starbucks, Diamond Braces, T-Mobile, Walgreens, Footlocker, Taco Bell, NYC Health + Woodhull Hospital, and more

TRANSPORTATION



COMMENTS

- Prime Broadway location surrounded by national retailers
- Steps from NYC Heath + Woodhull Hospital
- One block from the Flushing Ave train station
- Gas & venting in place for cooking
- Heavy Daytime Foot Traffic
- All Uses Considered

CONTACTS

MEYER DAGMY

718-249-3613

m@modcre.com

EDDIE MAMIYE

917-379-6719

e@modcre.com

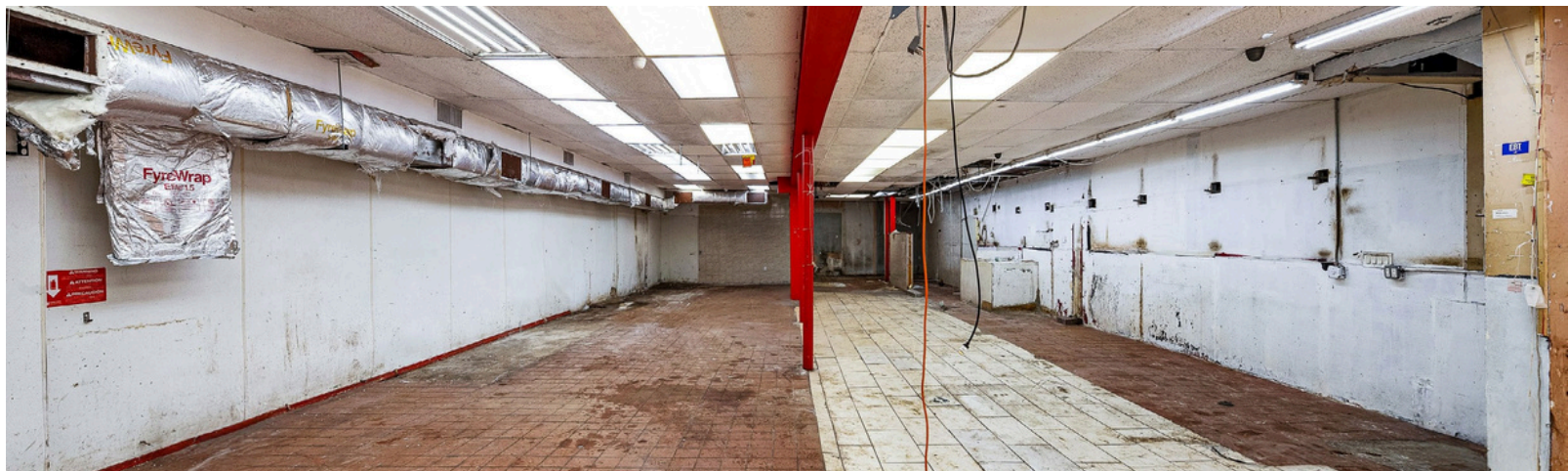
MIKE SUTTON

917-588-1000

mike@modcre.com



INTERIOR IMAGES



CONTACTS

MEYER DAGMY

718-249-3613

m@modcre.com

EDDIE MAMIYE

917-379-6719

e@modcre.com

MIKE SUTTON

917-588-1000

mike@modcre.com

MOD

RESTAURANT RENDERING



CONTACTS

MEYER DAGMY

718-249-3613

m@modcre.com

EDDIE MAMIYE

917-379-6719

e@modcre.com

MIKE SUTTON

917-588-1000

mike@modcre.com



AREA MAP



CONTACTS

MEYER DAGMY

718-249-3613

m@modcre.com

EDDIE MAMIYE

917-379-6719

e@modcre.com

MIKE SUTTON

917-588-1000

mike@modcre.com

MOD