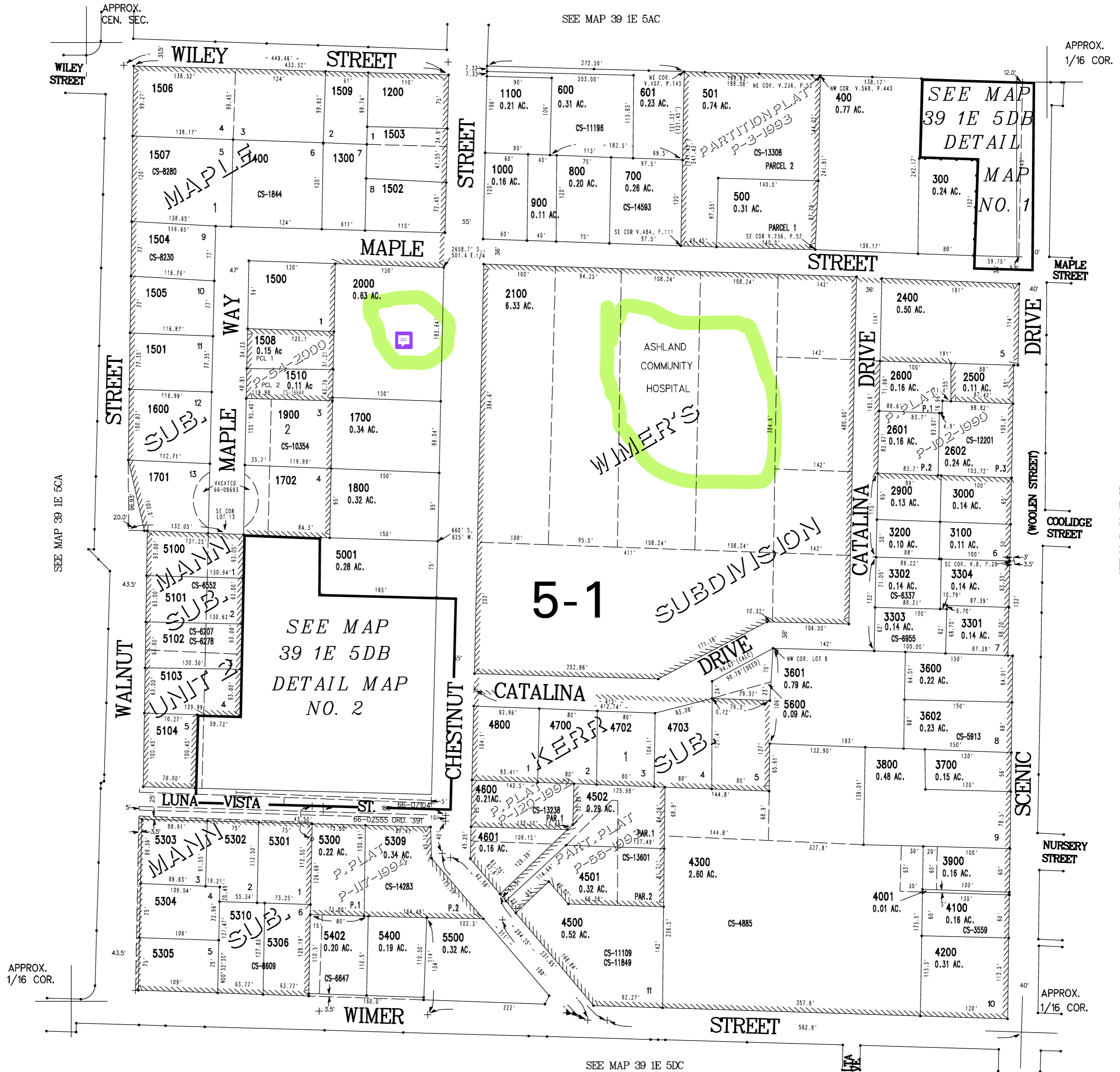


THIS MAP WAS PREPARED FOR  
ASSESSMENT PURPOSE ONLY

NW1/4 SE1/4 SEC. 5 T.39S. R.1E. W.M.  
JACKSON COUNTY

1" = 100'



CANCELLED NO.

- 100
- 3300
- 4000
- 5307
- 5308
- 5403

SEE MAP 39 1E 5DA