



Moses Tucker
PARTNERS

Little Rock (HEADQUARTERS)
200 River Market Ave, Suite 300
Little Rock, AR 72201
501.376.6555

Bentonville (BRANCH)
805 S Walton Blvd, Suite 123
Bentonville, AR 72712
479.271.6118

MULTIFAMILY INVESTMENT OPPORTUNITY

315 E 6th St, Little Rock, AR



CONTACT US TODAY
501.376.6555 | mosestucker.com



315 E 6th St

PROPERTY OVERVIEW

Offering	For Sale
Price	Contact Agent
Address	315 E 6 th St, Little Rock, AR 72202
Total Units	16 Units
Building Size	10,152 SF
Lot Size	0.26 Acres
Year Built/Renovated	1954/2022

PROPERTY HIGHLIGHTS

- Two-story multifamily complex in the heart of Downtown Little Rock near numerous entertainment and retail options
- Walkable neighborhood with close proximity to the River Market
- Fully furnished short-term rentals with shared laundry (all furniture to convey)
- HVAC systems are primarily brand-new



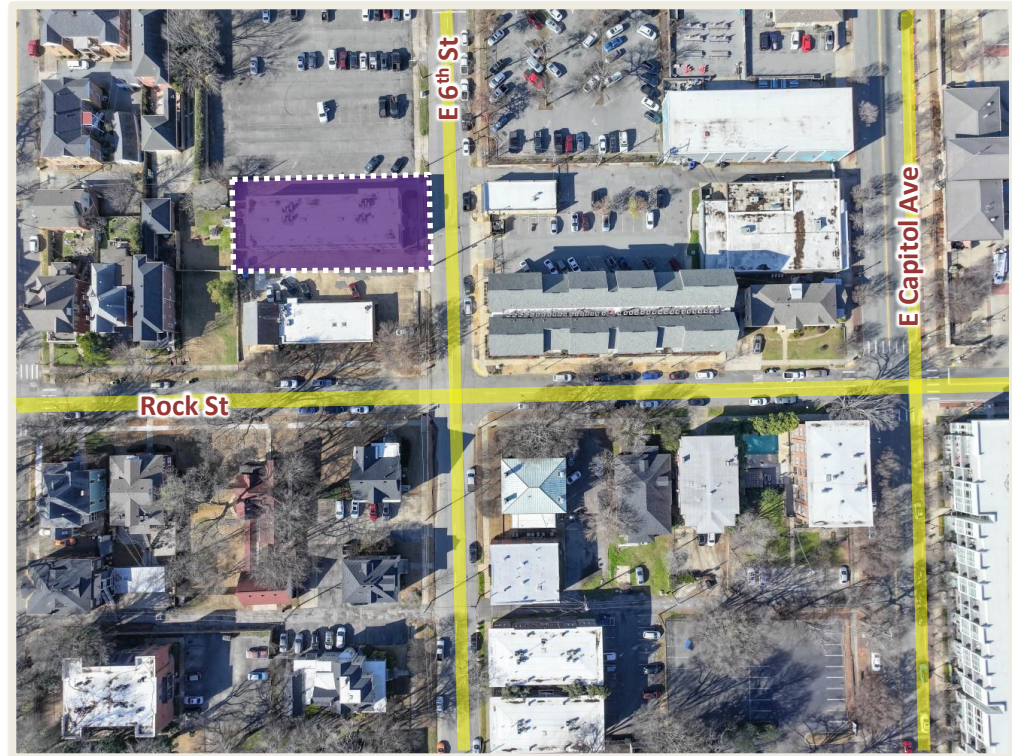
1 Bed/1 Bath

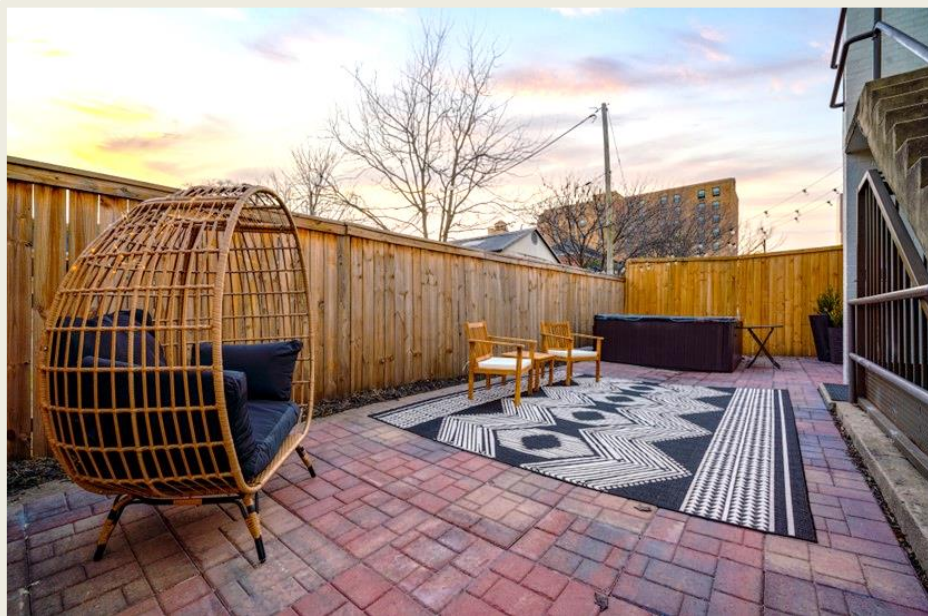
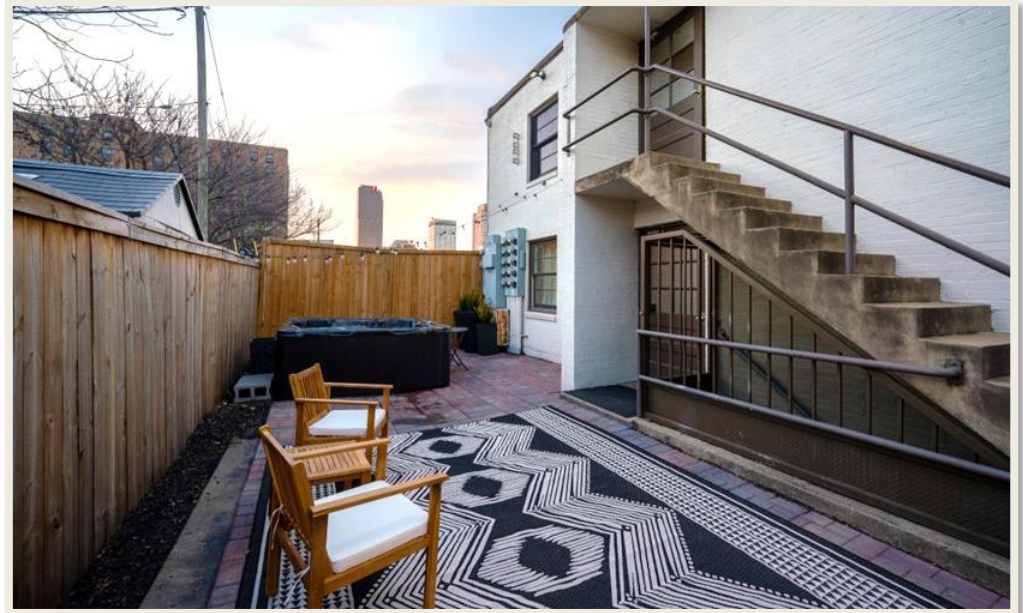


Avg. 500 SF



315 E 6th St







LITTLE ROCK, AR



Little Rock is the capital and most populous city in Arkansas and the county seat of Pulaski County. The city is considered where “America Comes Together,” boasting 40% of the nation’s population and buying power within a 550-mile radius of the city center.

The Central Arkansas region experienced a significant growth in population over the past decade due to the three major universities that call the area home, a growing technology sector and a variety of government- and business-related industries. Little Rock is recognized as a Forbes Top 200 “Best Places for Business and Careers.”

West Little Rock, specifically, has seen immense growth in recent years. Notably, BancorpSouth recently opened a new 40,000 SF statewide banking headquarters, and just across the street is First Community Bank’s new 20,000 SF statewide banking headquarters. Also nearby is the 90,000 SF Simmons Bank building, the 270,000 SF open-air retail center The Promenade at Chenal, and down the road is the 127-room, Class-A Aloft Hotel.

DEMOGRAPHICS*

	3 MILES	5 MILES	10 MILES
Population	39,617	109,400	294,394
Households	18,906	49,899	128,744
Average Age	40.8	40.1	39.7
Average Household Income	\$73,555	\$80,151	\$85,045
Businesses	3,178	6,569	12,961

**Demographic details based on property location*

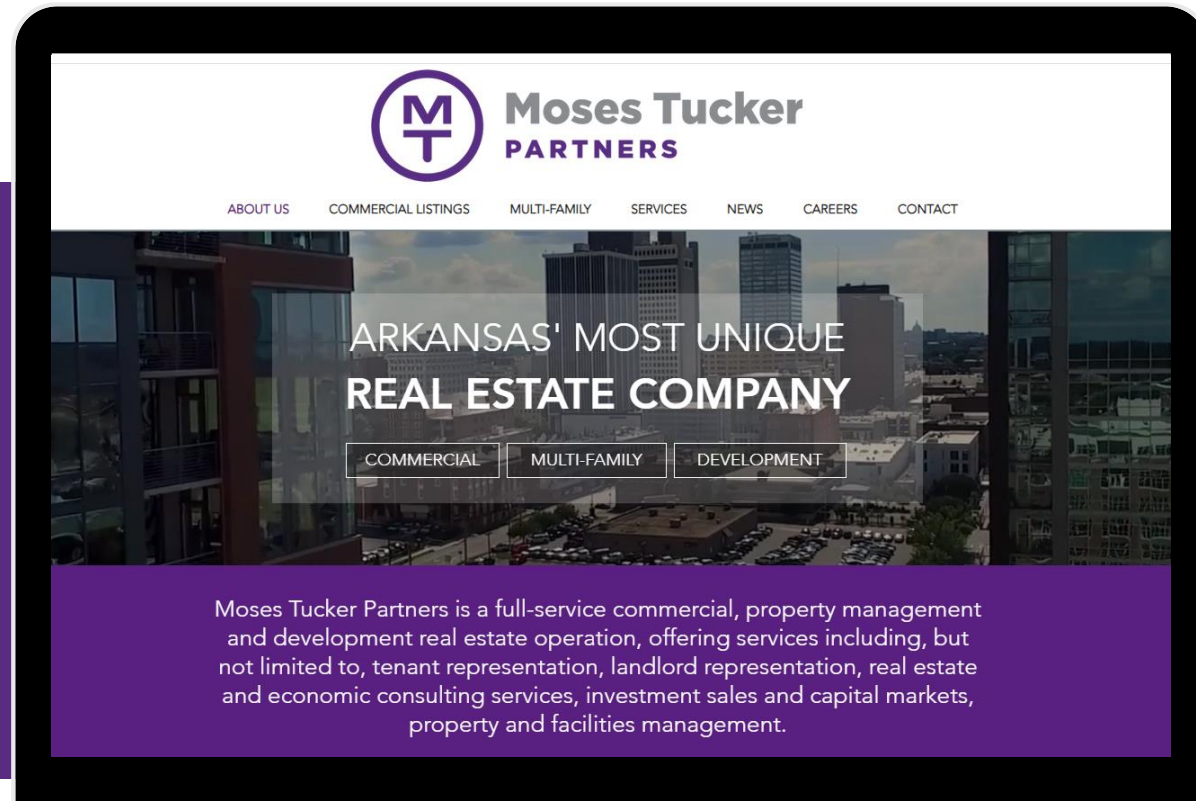
THANK YOU

 (501) 376-6555

 www.mosestucker.com

 info@mosestucker.com

 200 River Market Ave, Suite 300,
Little Rock, AR 72201



Chris Moses
Principal, President & CEO
cmoses@mosestucker.com

Chris Monroe
Principal & Vice President, Corporate Services
cmonroe@mosestucker.com

Greyson Skokos
Principal & Vice President of Brokerage
gskokos@mosestucker.com

George Friedmann
Principal & Vice President of Development
gfriedmann@mosestucker.com

Cam Deacon
Director of Capital Markets
cdeacon@mosestucker.com

Ridge Fletcher
Brokerage Analyst
rfletcher@mosestucker.com

DISCLAIMER

Moses Tucker Partners represents the owner of the property represented herein. Although all information furnished regarding property for sale, rental, or financing is from sources deemed reliable, such information has not been verified and no express representation is made nor is any to be implied as to the accuracy thereof and it is submitted subject to errors, omissions, change of price, rental or other conditions, prior sale, lease or financing, or withdrawal without notice and to any special conditions imposed by our principal.

Buyer's broker will be responsible for sourcing any Buyer-side commissions.