



FOR LEASE

WAREHOUSE WITH OUTDOOR STORAGE

10220 LIBERTY ROAD | RANDALLSTOWN, MARYLAND 21133

5,950 SF
AVAILABLE

.32 AC ±
PARKING/
OUTDOOR
STORAGE



MACKENZIE

COMMERCIAL REAL ESTATE SERVICES, LLC

PROPERTY OVERVIEW

HIGHLIGHTS:

- 5,950 SF ± warehouse space available
- 2 drive-ins
- .32 acres ± of parking/outdoor storage space (fenced, paved and secured)
- Over 200 feet of frontage on Liberty Rd/Rt. 26
- Easy access to I-795 and I-695

AVAILABLE:

5,950 SF ± (WAREHOUSE)

OUTDOOR SPACE:

.32 ACRES ±

CLEAR HEIGHT:

22' ±

LOADING:

2 DRIVE-INS

ZONING:

BR (BUSINESS ROADSIDE)

RENTAL RATE:

NEGOTIABLE



AERIAL



5,950 SF ± AVAILABLE

.32 AC ± OUTDOOR STORAGE

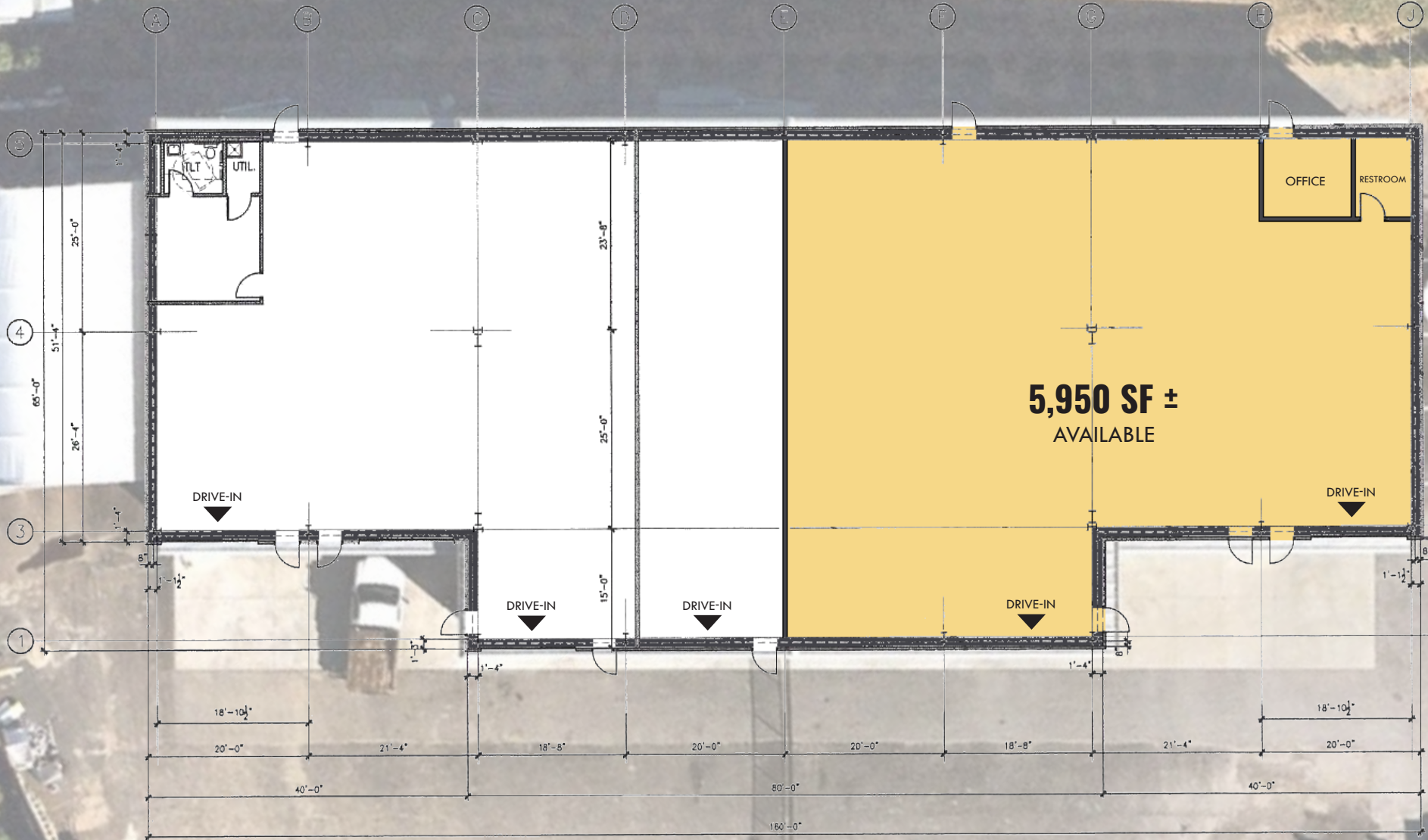
GATE

26

LIBERTY RD



FLOOR PLAN



LOCAL BIRDSEYE



SITE

LIBERTY RD

26



TRADE AREA

DRIVING DISTANCE TO:

 4.4 MILES
8 MIN. DRIVE

 5.4 MILES
10 MIN. DRIVE

 8.5 MILES
15 MIN. DRIVE

 19.7 MILES
25 MIN. DRIVE

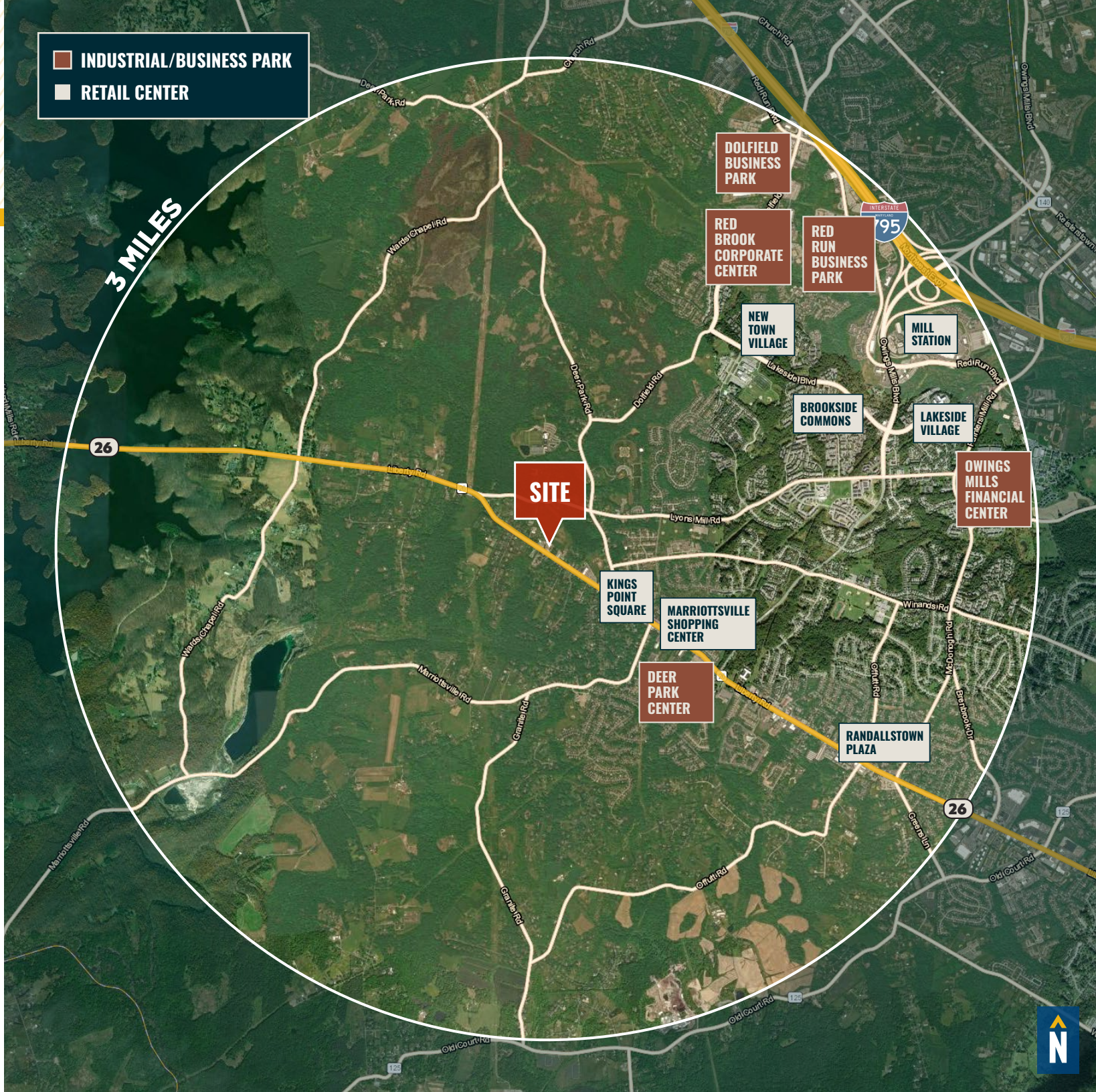
 20.5 MILES
27 MIN. DRIVE
(FAIRFIELD MARINE TERMINAL)

BALTIMORE, MD 23.1 MILES
27 MIN.

WASHINGTON, DC 48.5 MILES
1 HR. 12 MIN.

PHILADELPHIA, PA 117.0 MILES
1 HR. 55 MIN.

RICHMOND, VA 158.0 MILES
2 HRS. 40 MIN.



FOR MORE INFO CONTACT:



ANDREW MEEDER, SIOR

SENIOR VICE PRESIDENT & PRINCIPAL

410.494.4881

AMEEDER@mackenziecommercial.com



MATTHEW CURRAN, SIOR

SENIOR VICE PRESIDENT & PRINCIPAL

443.573.3203

MCURRAN@mackenziecommercial.com



MATT MUELLER

SENIOR VICE PRESIDENT & PRINCIPAL

410.494.6658

MMUELLER@mackenziecommercial.com



MACKENZIE

COMMERCIAL REAL ESTATE SERVICES, LLC

443-573-3200

**111 S. Calvert Street
Baltimore, MD 21202**

OFFICES IN: ANNAPOLIS, MD **BALTIMORE, MD** BEL AIR, MD COLUMBIA, MD LUTHERVILLE, MD CHARLOTTESVILLE, VA

www.MACKENZIECOMMERCIAL.com



VISIT **PROPERTY PAGE** FOR MORE INFORMATION.

No warranty or representation, expressed or implied, is made as to the accuracy of the information contained herein, and same is submitted subject to errors, omissions, change of price, rental or other conditions, withdrawal without notice, and to any specific listing conditions imposed by our principals.