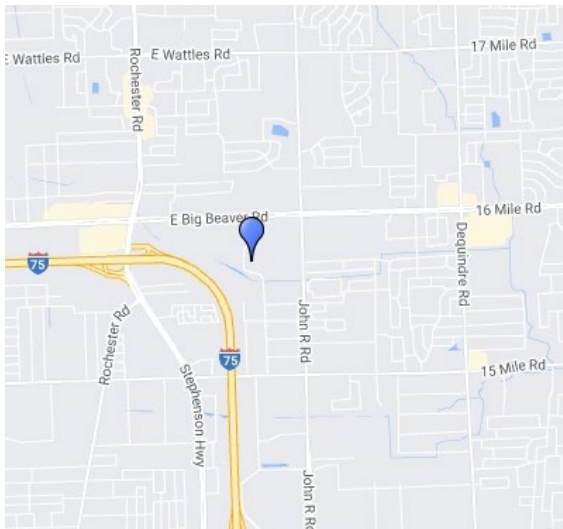




2710 Bellingham

Troy, M



FOR LEASE

Property Highlights

- 20,000 SF - 46,825 SF Available For Lease
- 18' Ceiling Heights
- Flexible Zoning
- High-Bay Lab Space Can Be Created
- High-Image Freestanding Building

For information, please contact:

GEOFF HILL

Executive Managing Director

t 248-350-1492

geoff.hill@nmrk.com

CHRIS HILL

Director

t 248-350-1192

chris.hill@nmrk.com

27725 Stansbury Blvd, Suite 300,
Farmington Hills, MI 48334

nmrk.com

NEWMARK

The information contained herein has been obtained from sources deemed reliable but has not been verified and no guarantee, warranty or representation, either express or implied, is made with respect to such information. Terms of sale or lease and availability are subject to change or withdrawal without notice.

Lease

2710 Bellingham Rd Troy, MI 48083

NEWMARK



Pricing Information:

Lease Rate Range:	\$12.50-\$12.50 NNN
Lease Type:	NNN
Sale Price:	N/A
Price per SF:	N/A
Real Estate Taxes psf:	\$1.99
Building Insurance psf:	\$0.00
CAM psf:	N/A

Property Details:

Total Building Area:	46,825 sf
Min/Max Available:	20,000sf - 46,825 sf
Office Area:	46,825 sf
Property Type:	R&D/Flex
Tenancy:	Multi-tenant
Year Built:	01/01/2000
Year Renovated:	
Zoning:	M-1
Site/Parcel Area:	12.46 acres

Parcel ID:	20-26-200-082
Parking Description:	
Rail Served:	No
Cranes:	No
Heat:	GFA
Clear Height Min/Max:	18.0 '
Grade/Dock Doors:	N/A
Sprinkler:	Yes
Power:	1,000 amps, 240 volt

Comments:

20,000 SF - 46,825 SF high image free-standing Flex/R&D building with 18' ceiling height, ample parking, heavy power, office can be removed to create high-bay lab space, grade level doors can be added.

Chris Hill

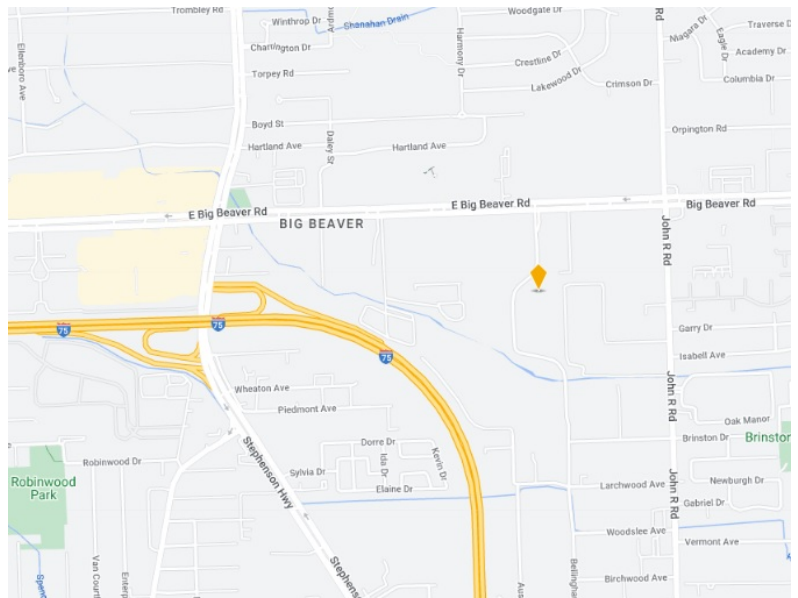
248.350.1192

Chris.Hill@nmrk.com

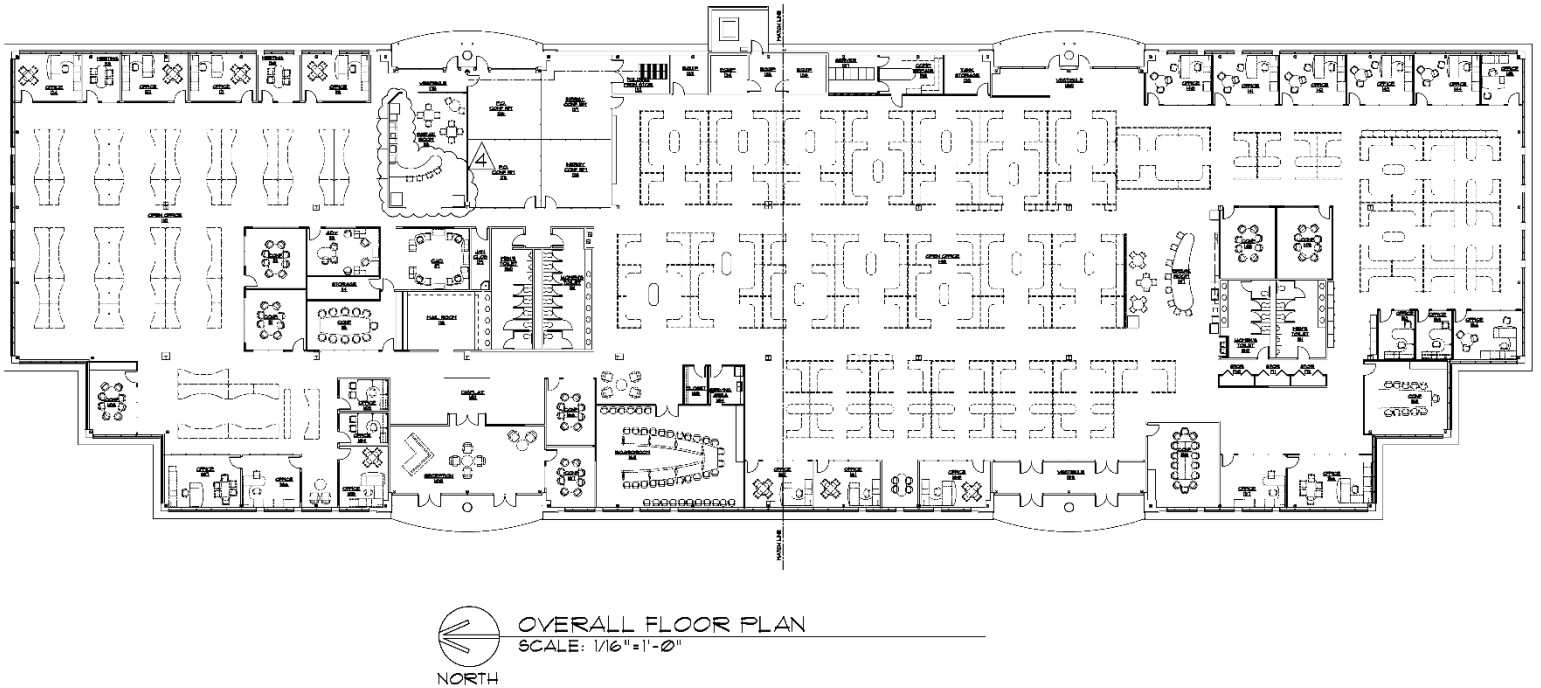
Geoffrey Hill

248.350.1492

Geoff.Hill@nmrk.com



Floor Plan



CONTACT

GEOFF HILL

Executive Managing Director

t 248-350-1492

geoff.hill@nmrk.com

CHRIS HILL

Director

t 248-350-1192

chris.hill@nmrk.com

NEWMARK

Interior Photos



CONTACT

GEOFF HILL

Executive Managing Director

t 248-350-1492

geoff.hill@nmrk.com

CHRIS HILL

Director

t 248-350-1192

chris.hill@nmrk.com

NEWMARK