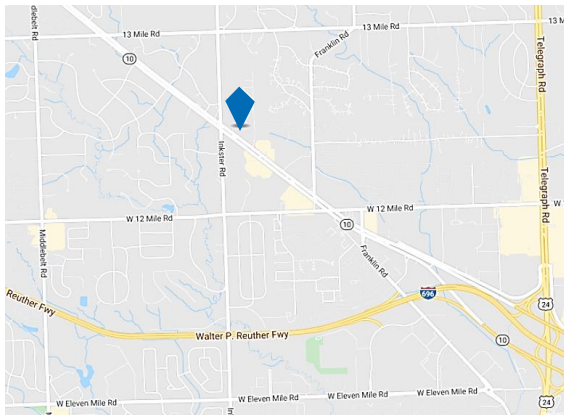




# Franklin Park Office Center

29600 Northwestern Highway  
Southfield, MI 48034



## FOR LEASE

- Suite 100 – 3,250 RSF
- Suite 108 – 715 RSF
- Glass Suite Entry Directly Off Main Building Lobby
- Monument Signage Could Be Made Available
- Under New Ownership & Management
- Centrally Located & Easy Access to Major Highways & Mile Roads
- Surrounded By Residential Neighborhoods And Supporting Retail
- Quiet Building in Wooded Setting

For information, please contact:

**Mike Valant**

Managing Director

t 248-885-1395

Mike.Valant@nmrk.com

**J.P. Champine**

Managing Director

t 313-622-3634

JP.Champine@nmrk.com

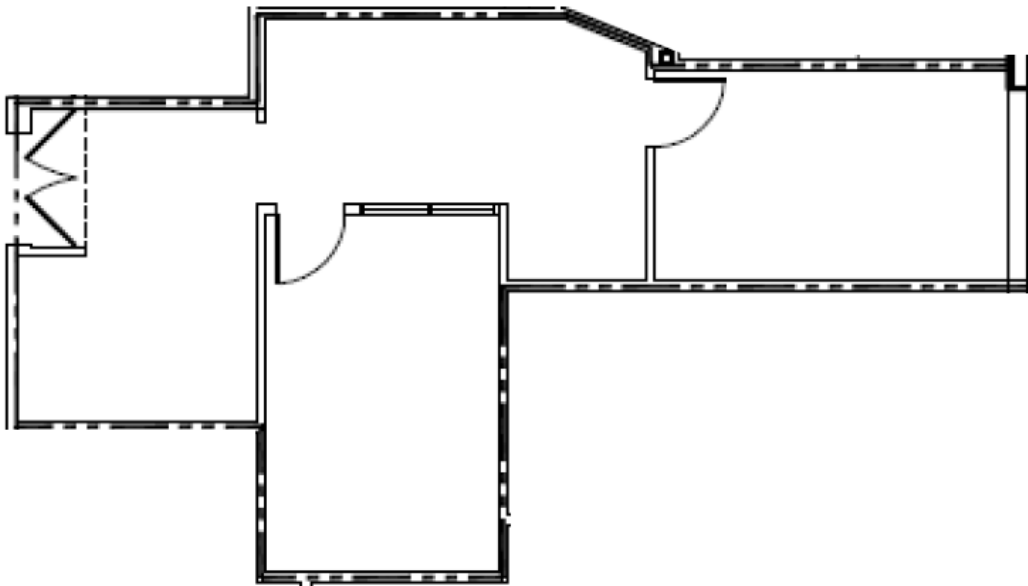
27725 Stansbury Blvd, Suite 300,  
Farmington Hills, MI 48334

[nmrk.com](http://nmrk.com)

# NEWMARK

The information contained herein has been obtained from sources deemed reliable but has not been verified and no guarantee, warranty or representation, either express or implied, is made with respect to such information. Terms of sale or lease and availability are subject to change or withdrawal without notice.





---

CONTACT

**Mike Valant**

*Managing Director*

t 248-885-1395

Mike.Valant@nmrk.com

**J.P. Champine**

*Managing Director*

t 313-622-3634

JP.Champine@nmrk.com

27725 Stansbury Blvd, Suite 300,  
Farmington Hills, MI 48334

[nmrk.com](http://nmrk.com)