

# Bellomy Center Retail Space For Lease

1975-1995 Bellomy St., Santa Clara, CA



**Last Retail Space**  
**1,388± SF**

**RYAN WARNER**

Lic. #01397580  
rwarner@moinc.net  
408.477.2505





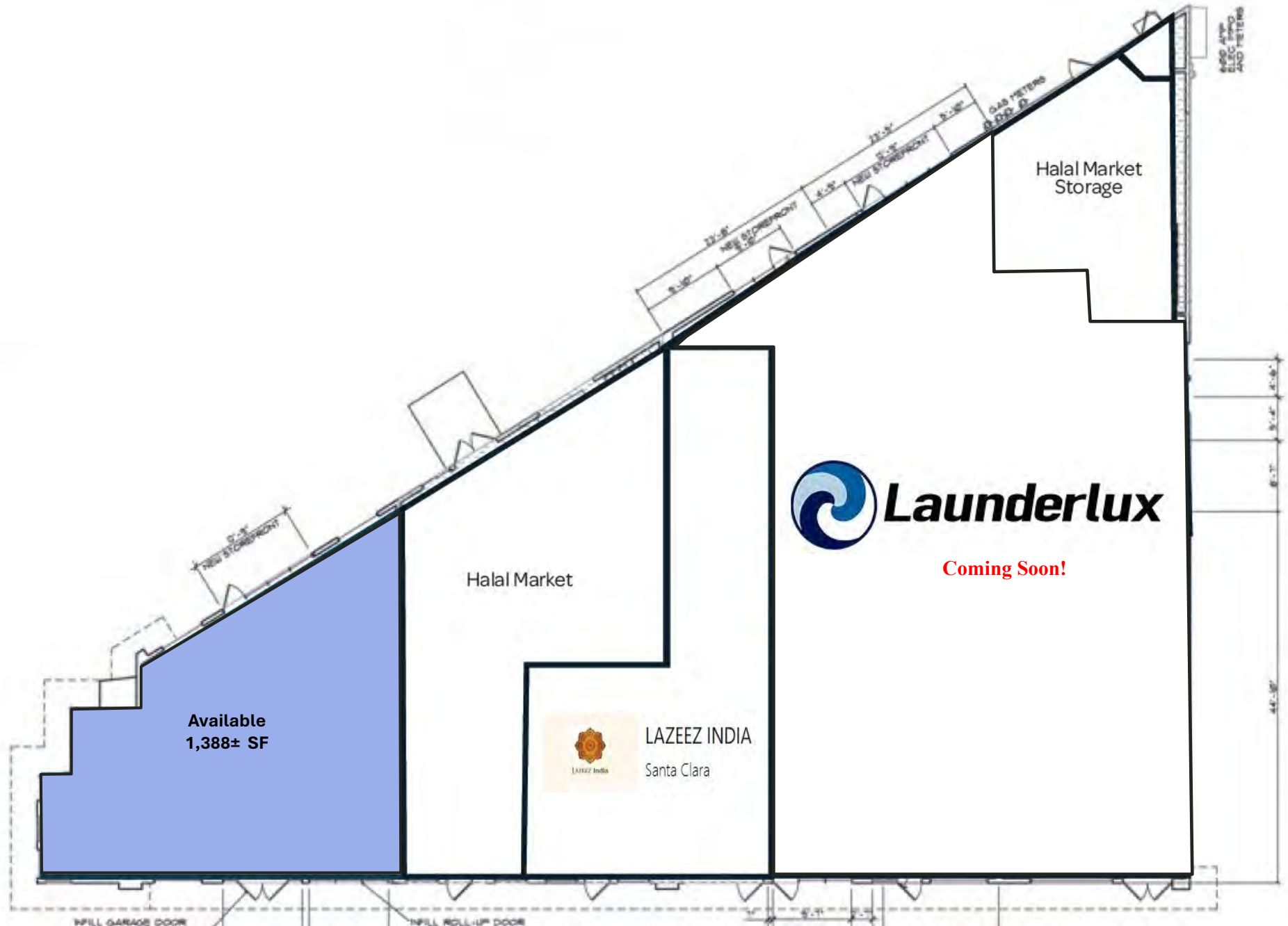
# PROPERTY HIGHLIGHTS



- Newly Remodeled Retail Building
- Close Proximity to Santa Clara University
- High Population Density
- Outdoor Patio Possible

- Launderlux Coming Soon!
- 1,388± SF Endcap
- Asking \$3.00 PSF, NNN
- TI Allowance Available

# FLOOR PLAN



The information contained herein has been obtained from sources we deem reliable. We cannot, however, assume responsibility for its accuracy.







# PHOTOS

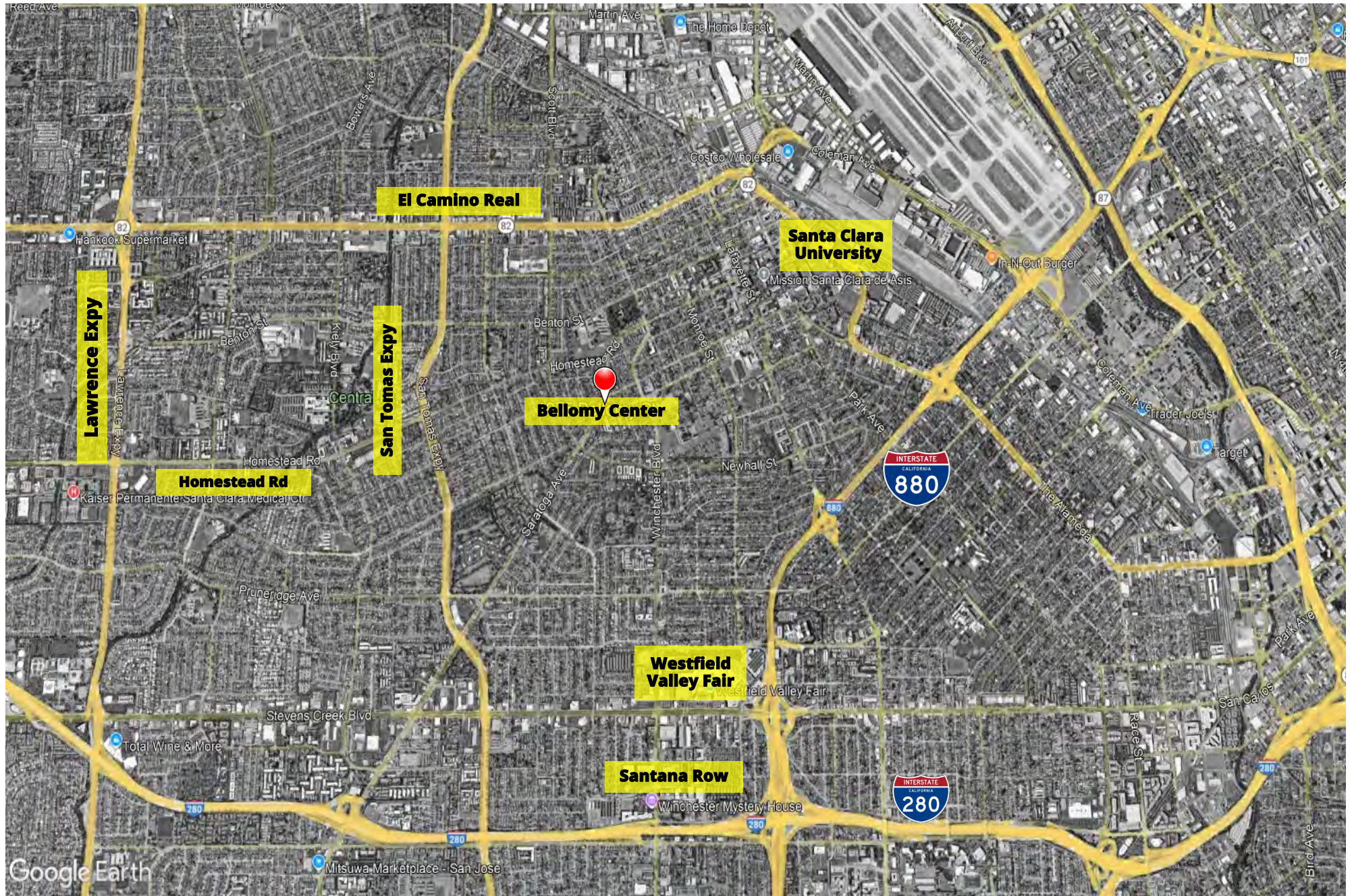




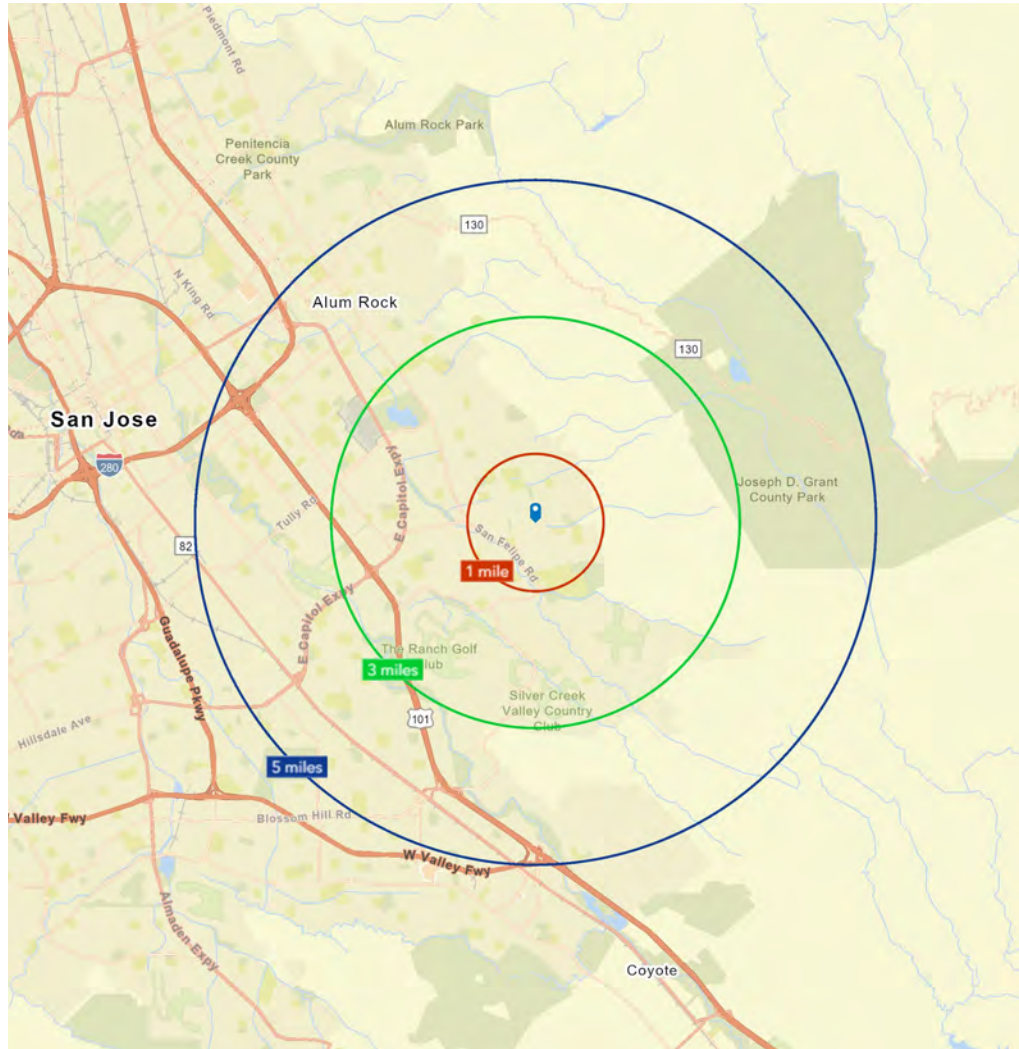
# PHOTOS











## AREA DEMOGRAPHICS

2026	<u>1 MILE</u>	<u>3 MILES</u>	<u>5 MILES</u>
POPULATION:	29,204	232,272	649,504
AVG. HH INCOME:	\$199,764	\$206,585	\$218,951

	<u>1 MILE</u>	<u>3 MILES</u>	<u>5 MILES</u>
BUSINESSES:	919	11,712	32,811
EMPLOYEES:	7,725	140,817	421,211