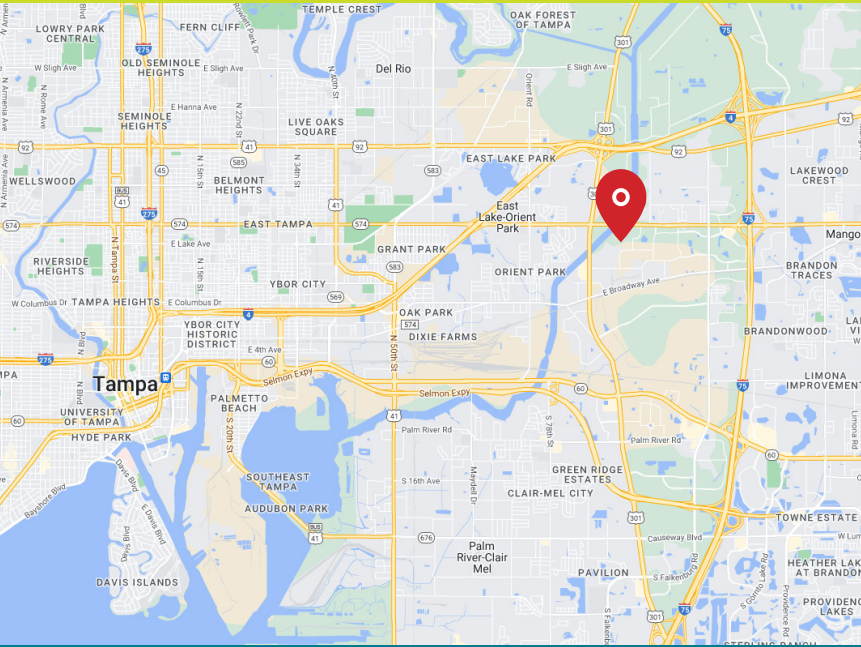


3849 COCONUT PALM DRIVE



3849 Coconut Palm Dr.
Tampa, FL 33619

IOS / Parking Lot



PROPERTY HIGHLIGHTS

IOS / Parking Lot

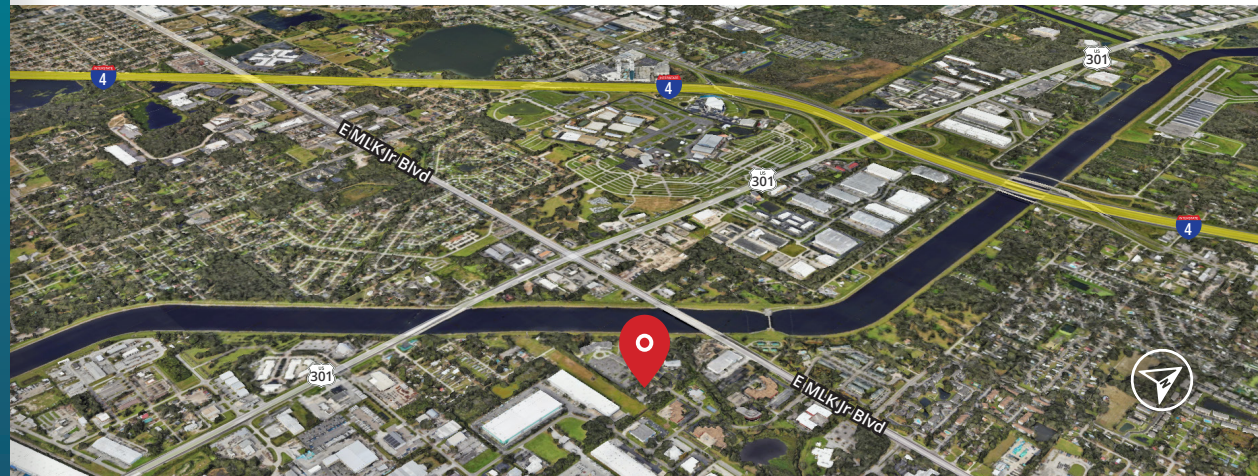
- **5,000-20,000 SF Build to Suit Available**
- Fully paved and lit 1.96 acres lot
- Zone M (laydown yard, auto parking, outdoor storage, trailer parking)
- Situated in the heart of the East Tampa submarket, Coconut Palm offers easy access to key roads such as Interstate 4, Interstate 75, and US Highway 301

BRAD HUTTON | Director
813.793.8492 | Brad.Hutton@FranklinSt.com

DAVID HOVIS | Associate
813.345.5895 | David.Hovis@FranklinSt.com

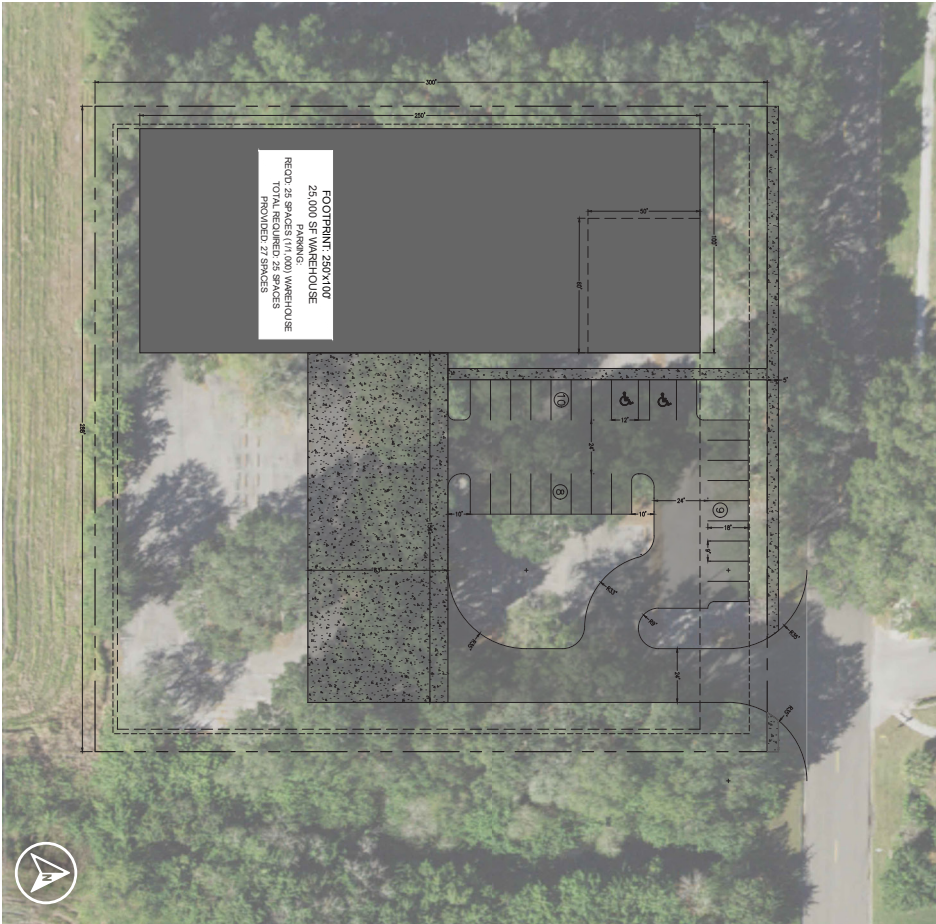


LICENSED REAL ESTATE BROKER | FranklinSt.com



CONCEPT SITE PLANS: 1.96 AC

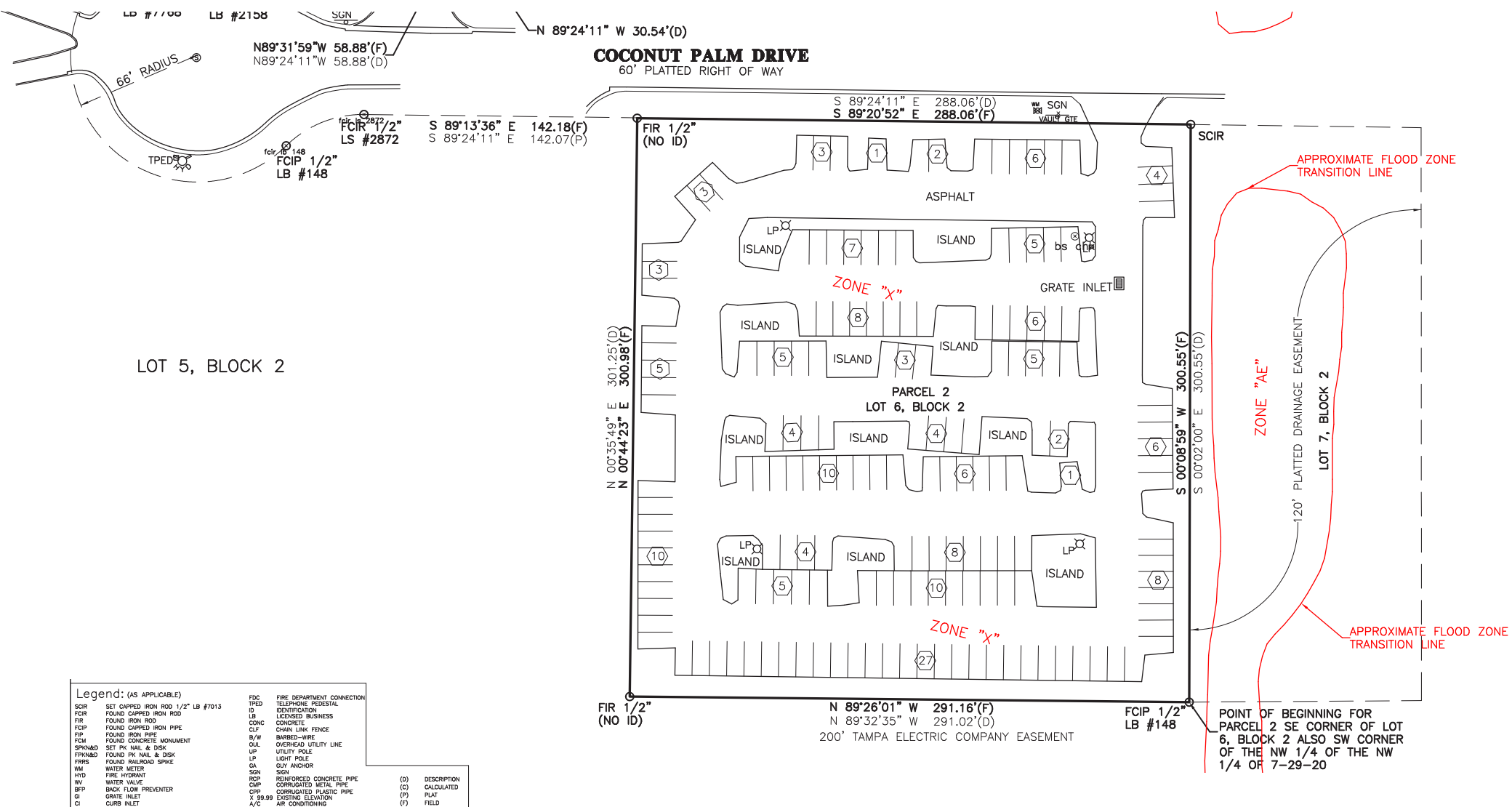
Option 1



Option 2



PROPERTY SURVEY



LOT 5, BLOCK 2

| Legend: (AS APPLICABLE) | | | |
|-------------------------|-----------------------------------|------|----------------------------|
| SCIR | SET CAPPED IRON ROD 1/2" LB #7013 | FDG | FIRE DEPARTMENT CONNECTION |
| FCIR | FOUND CAPPED IRON ROD | TPED | TELEPHONE PEDestal |
| FIR | FOUND IRON ROD | ID | IDENTIFICATION |
| FCIP | FOUND CAPPED IRON PIPE | CB | CONCRETE |
| FIP | FOUND IRON PIPE | CLF | CHAIN LINK FENCE |
| FCM | FOUND CONCRETE MONUMENT | B/W | BARBED-WIRE |
| SPK&D | SET PK NAIL & DISK | OUL | OVERHEAD UTILITY LINE |
| FRK&D | FOUND PK NAIL & DISK | LP | UTILITY POLE |
| FRS | FOUND RAILROAD SPIKE | LP | LIGHT POLE |
| WM | WATER METER | GA | GUY ANCHOR |
| HYD | FIRE HYDRANT | SGN | SGN |
| WV | WATER VALVE | RCP | REINFORCED CONCRETE PIPE |
| BFP | BACK FLOW PREVENTER | CMP | CORRUGATED METAL PIPE |
| GI | GRATE INLET | CP | CORRUGATED PLASTIC PIPE |
| CI | CURB INLET | X | EXISTING ELEVATION |
| | | A/C | AIR CONDITIONING |
| | | (D) | DESCRIPTION |
| | | (C) | CALCULATED |
| | | (P) | PLAT |
| | | (F) | FIELD |