

Sublease Available Immediately

161 Washington Street
Conshohocken, PA 19428



TROPHY OFFICE SPACE AT A RATE YOU'LL LOVE - \$20/RSF +E



For more information or a private tour, please contact:

Paul E. Wolfson

Senior Vice President

pwolfson@geisrealty.com

996 Old Eagle School Road, Suite 1117

Wayne, PA 19087

(610) 989-0300

www.geisrealty.com

No warranty or representation, express or implied, is made as to the accuracy of the information contained herein, and the same is submitted subject to errors, omissions, change of price, rental or other conditions, prior sale, lease or financing, or withdrawal without notice, and of any special listing conditions imposed by our principals no warranties or representations are made as to the condition of the property or any hazards contained therein are any to be implied.

Sublease Available Immediately

161 Washington Street

Conshohocken, PA 19428



- **Available immediately**
- Trophy building, trophy space
- 2nd floor space:
 - 7,684 RSF
- Term ends 9/30/2027
- Rental rate: \$20/RSF +E



For more information or a private tour, please contact:

Paul E. Wolfson

Senior Vice President

pwolfson@geisrealty.com

996 Old Eagle School Road, Suite 1117

Wayne, PA 19087

(610) 989-0300

www.geisrealty.com

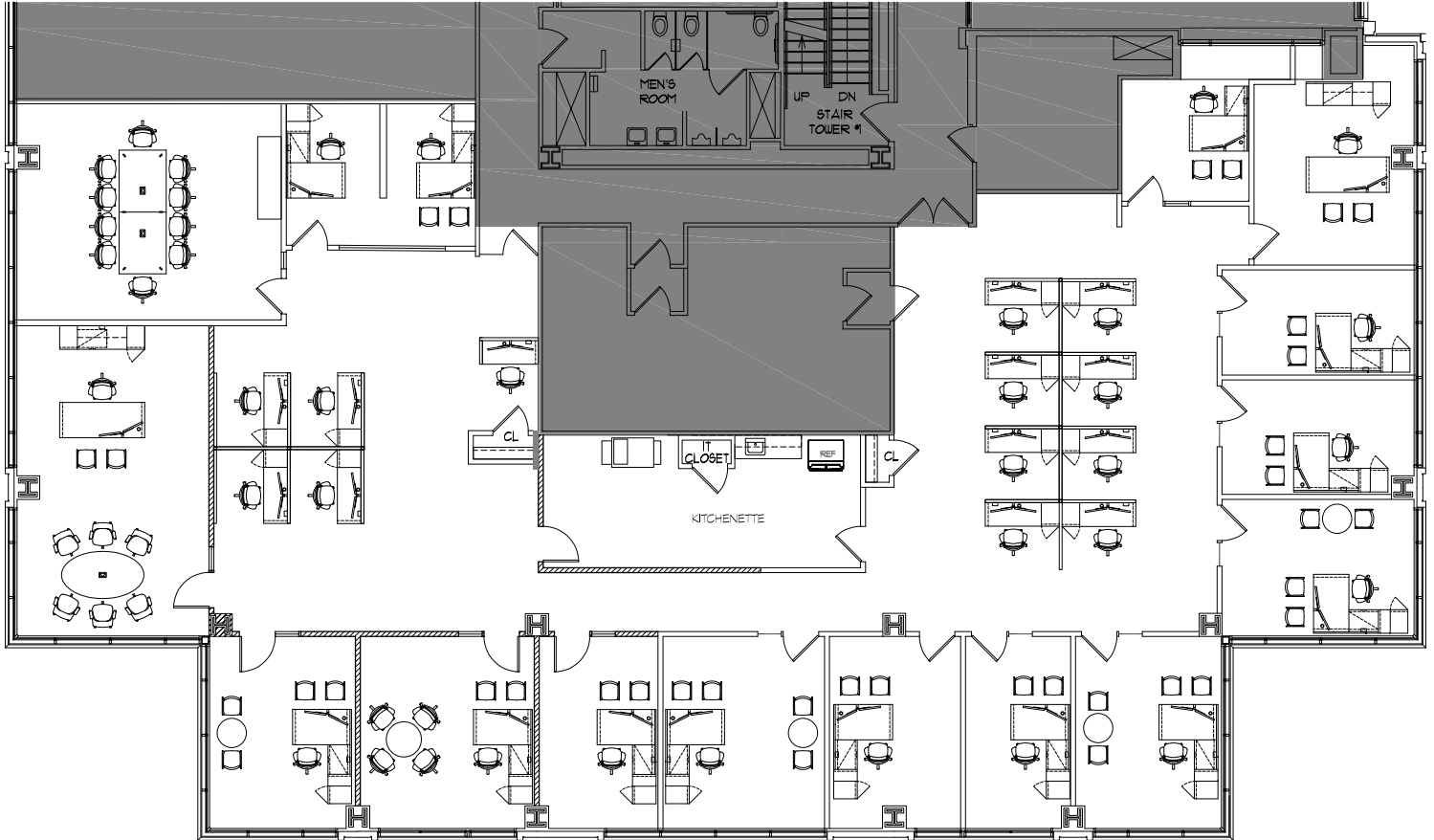
No warranty or representation, express or implied, is made as to the accuracy of the information contained herein, and the same is submitted subject to errors, omissions, change of price, rental or other conditions, prior sale, lease or financing, or withdrawal without notice, and of any special listing conditions imposed by our principals no warranties or representations are made as to the condition of the property or any hazards contained therein are any to be implied.

Sublease Available Immediately

161 Washington Street
Conshohocken, PA 19428



2nd floor space: 7,684 RSF



For more information or a private tour, please contact:

Paul E. Wolfson
Senior Vice President
pwolfson@geisrealty.com

996 Old Eagle School Road, Suite 1117
Wayne, PA 19087
(610) 989-0300

www.geisrealty.com

No warranty or representation, express or implied, is made as to the accuracy of the information contained herein, and the same is submitted subject to errors, omissions, change of price, rental or other conditions, prior sale, lease or financing, or withdrawal without notice, and of any special listing conditions imposed by our principals no warranties or representations are made as to the condition of the property or any hazards contained therein are any to be implied.