

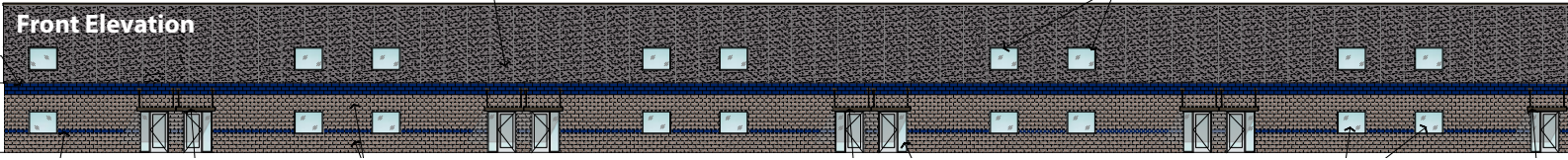


**HOKANSON  
COMPANIES INC.**  
INVESTMENT & CORPORATE REAL ESTATE

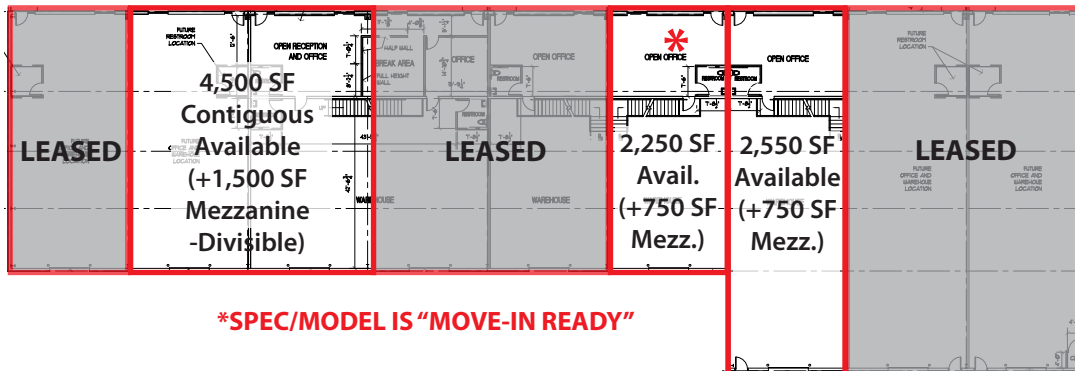
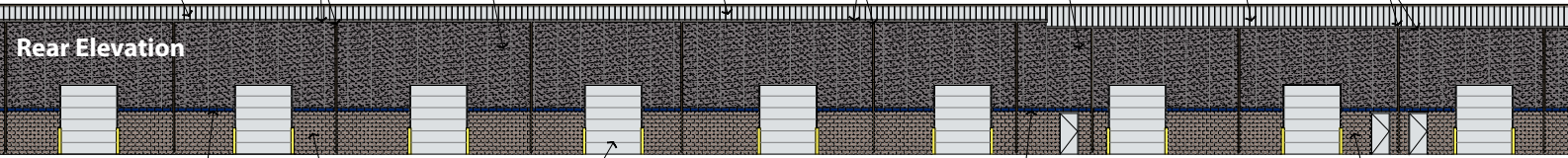
# FOR LEASE

## PLEASANT STREET WAREHOUSES 17265 HARGER COURT, NOBLESVILLE, IN

Front Elevation

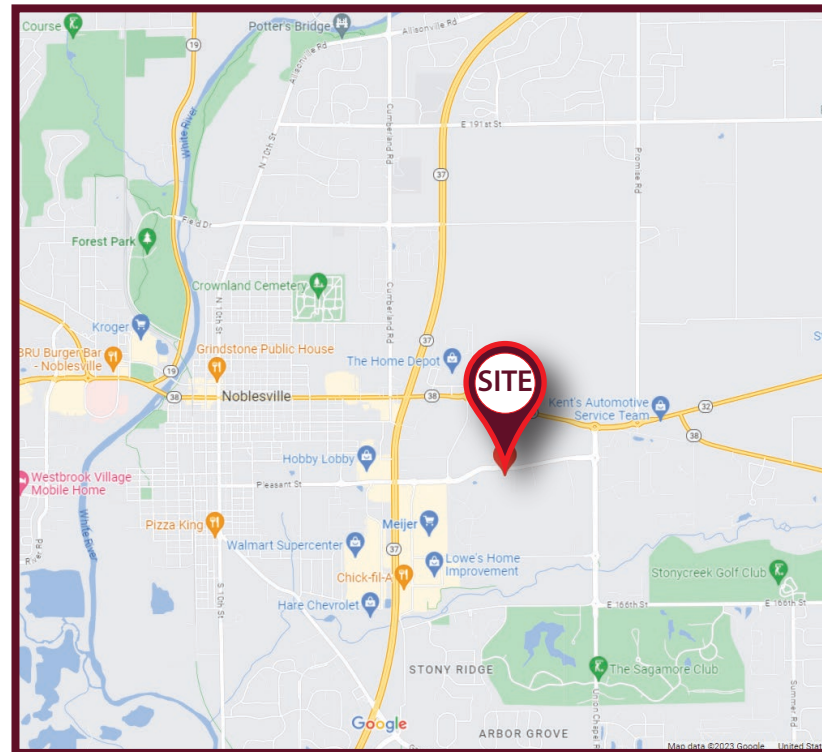


Rear Elevation



### Property Highlights

- 21,150 SF First Floor + 6,750 SF Mezzanine = 27,900 SF Total Building
- Great Location at the SWC of Pleasant Street and Harger Court
- New Building Completed January, 2025
- Office/Warehouse/Flex Space for Lease
- 22' Clear Height
- 2,250 SF Suites (30' x 75') + 750 SF Mezz. = 3,000 SF
- 2,550 SF Suites (30' x 85') + 750 SF Mezz. = 3,300 SF
- All Include 750 SF Office
- Call for Pricing



### FOR MORE INFORMATION

**James G. Mount**  
Senior Director, Leasing & Brokerage  
(317) 633-8061  
jgm@hokansoninc.com



**HOKANSON  
COMPANIES INC.**

**Hokanson Companies, Inc.**  
10201 N. Illinois Street, Suite 350  
Carmel, Indiana 46290  
www.hokansoninc.com

The information obtained herein was obtained from sources we consider reliable. We cannot be responsible, however, for error, omission, prior sale, withdrawal from the market, or change in price. Broker makes no representation to the environmental condition of the property and recommends purchaser's independent investigation.





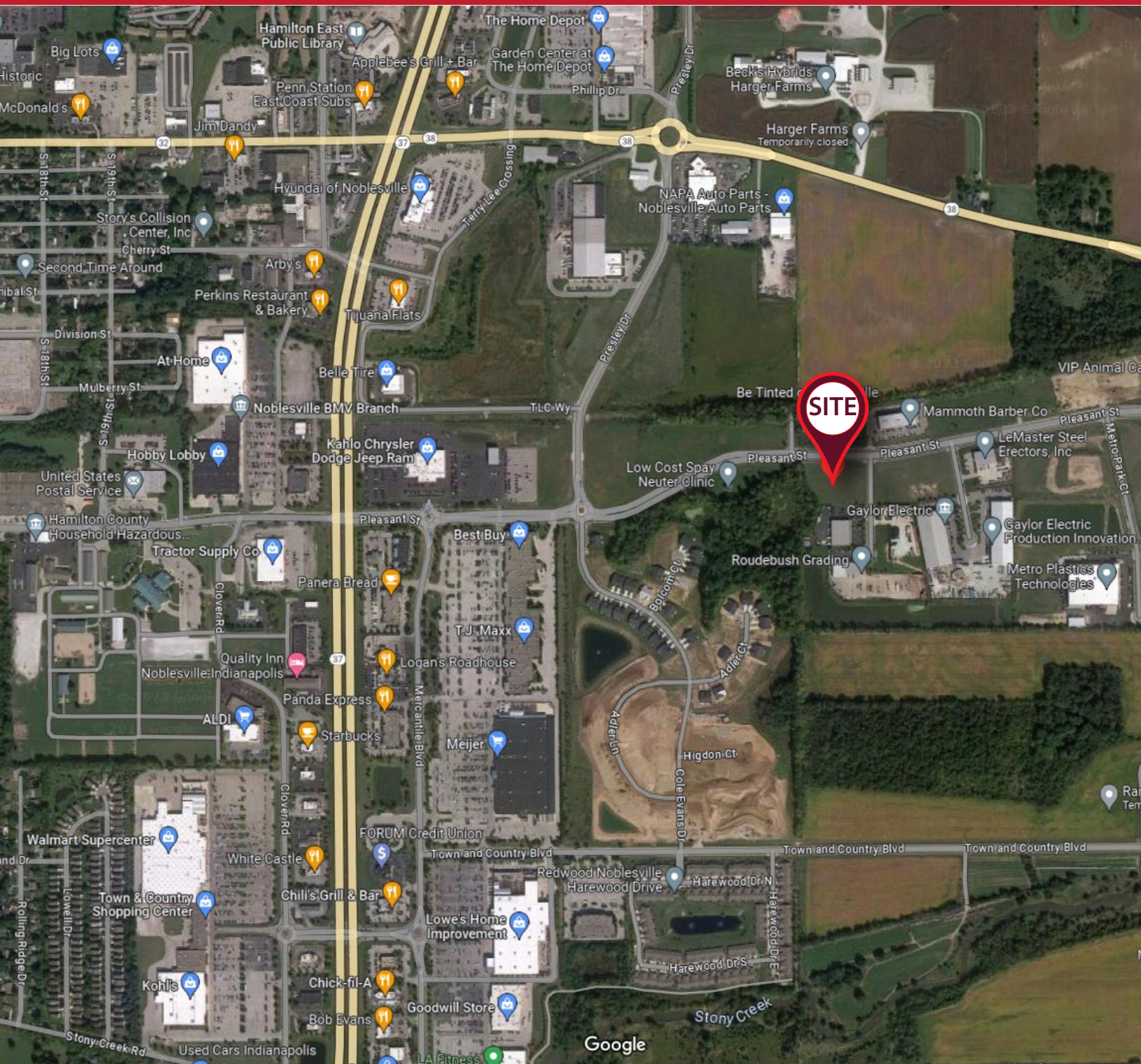




**HOKANSON  
COMPANIES INC.**  
INVESTMENT & CORPORATE REAL ESTATE

# FOR LEASE

## PLEASANT STREET WAREHOUSES 17265 HARGER COURT, NOBLESVILLE, IN



### FOR MORE INFORMATION

**James G. Mount**  
Senior Director, Leasing & Brokerage  
(317) 633-8061  
jgm@hokansoninc.com



**HOKANSON  
COMPANIES INC.**

**Hokanson Companies, Inc.**  
10201 N. Illinois Street, Suite 350  
Carmel, Indiana 46290  
www.hokansoninc.com

The information obtained herein was obtained from sources we consider reliable. We cannot be responsible, however, for error, omission, prior sale, withdrawal from the market, or change in price. Broker makes no representation to the environmental condition of the property and recommends purchaser's independent investigation.