

# AGGRESSIVELY SEEKING RETAILERS

JOIN NATIONAL  
GROCER  
COMING SOON



**175 LAKESIDE BLVD.**  
LANDING, NEW JERSEY  
**LAKESIDE PLAZA**

FOR LEASE **1,213 - 5,600 SF**

**MIKE MENDOZA**

mmendoza@jefferyrealty.com

C: 201.952.3005

O: 908.668.9600 x220

**STEVE BATTISTA**

sbattista@jefferyrealty.com

C: 908.963.4539

O: 908.668.9600 x203



**JEFFERY REALTY**  
Retail Specialist

52 Millburn Ave. • Springfield, NJ 07081 • T: 908.668.9600 • F: 908.668.5225 • [www.JefferyRealty.com](http://www.JefferyRealty.com)

All information is from sources deemed reliable and is submitted subject to errors, omissions, change of price, terms, prior sales and withdrawals.





**175 LAKESIDE BLVD.**

LANDING, NEW JERSEY

## SITE INFORMATION

**GLA:** 64,000 SF

**RENT:** CALL FOR QUOTE

**NNN CHARGE:** \$6.50 PSF

**PARKING:** 400+ SPACES

**TRAFFIC:** 25,740 VPD ON LAKESIDE

**AVAILABLE:** 1,213 - 5,600 SF

**NOTES:**

- National grocer coming soon
- Facade upgrades and renovations in progress
- Potential Pad Site in Parking Lot

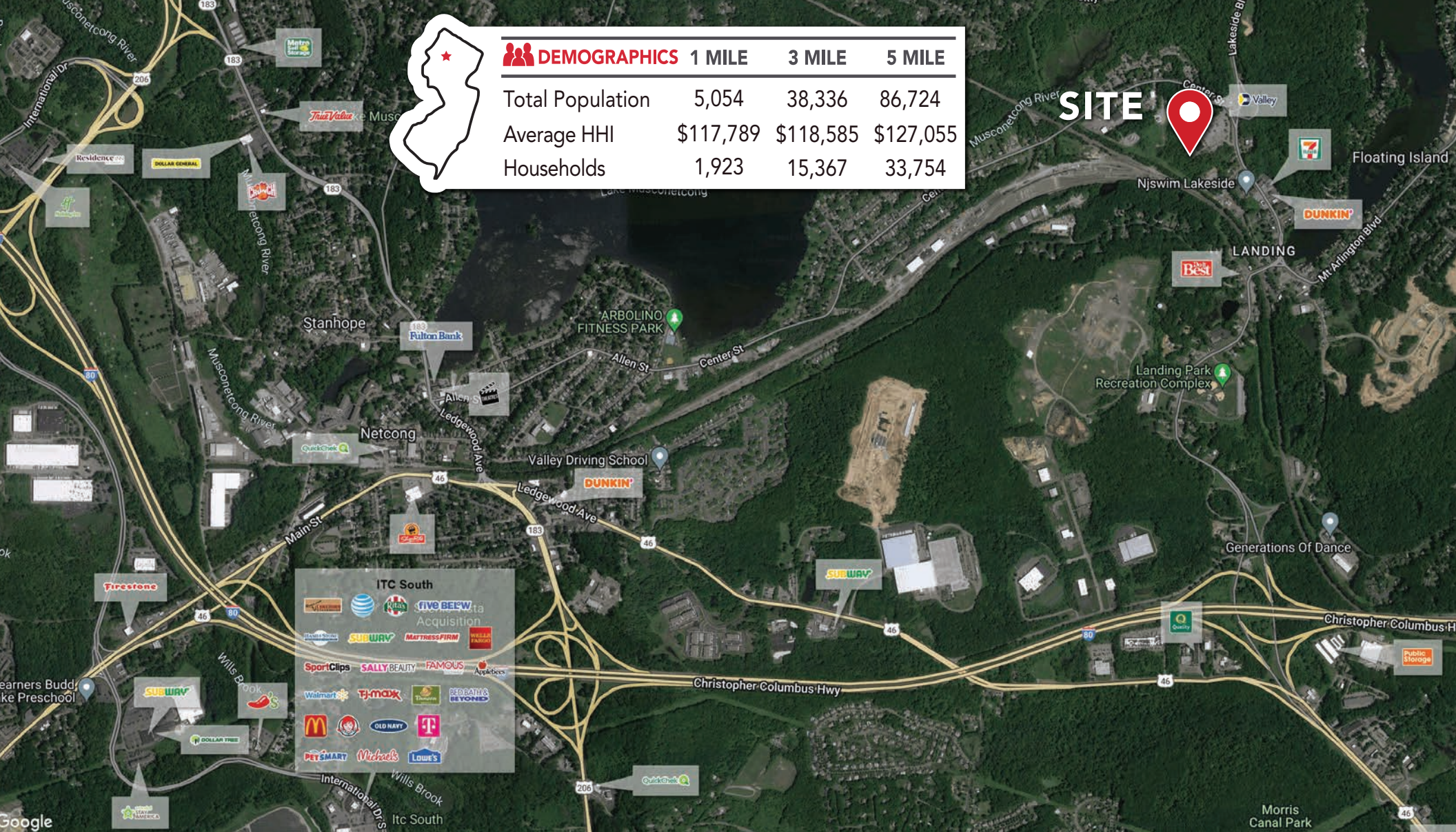



**JEFFERY REALTY**  
Retail Specialist

52 Millburn Ave. • Springfield, NJ 07081 • T: 908.668.9600 • F: 908.668.5225 • [www.JefferyRealty.com](http://www.JefferyRealty.com)

All information is from sources deemed reliable and is submitted subject to errors, omissions, change of price, terms, prior sales and withdrawals.





 DEMOGRAPHICS	1 MILE	3 MILE	5 MILE
Total Population	5,054	38,336	86,724
Average HHI	\$117,789	\$118,585	\$127,055
Households	1,923	15,367	33,754

**SITE** 

**175 LAKESIDE BLVD.**      LANDING, NEW JERSEY

**MARKET AERIAL**