

LAND FOR SALE

6499 ROOSEVELT HWY
6499 Roosevelt Hwy Union City, GA 30291



PROPERTY DESCRIPTION

11 acres on Hwy 29
16,600 VPD
Zoned GC/TCMU

PROPERTY HIGHLIGHTS

OFFERING SUMMARY

Sale Price:	\$835,000
Lot Size:	10.95 Acres

DEMOGRAPHICS	1 MILE	3 MILES	5 MILES
Total Households	1,437	11,739	26,746
Total Population	3,948	31,867	73,662
Average HH Income	\$49,439	\$52,292	\$60,905

Tom Fulton
770 329 1410

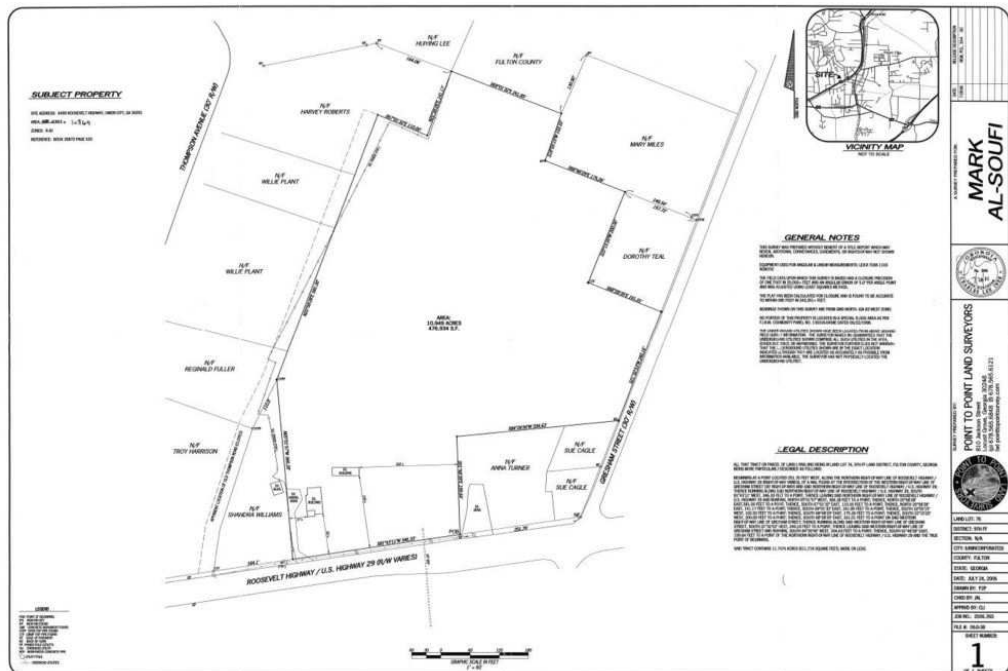


COLDWELL BANKER
COMMERCIAL
BULLARD

PLAT & AERIAL

6499 ROOSEVELT HWY

6499 Roosevelt Hwy Union City, GA 30291



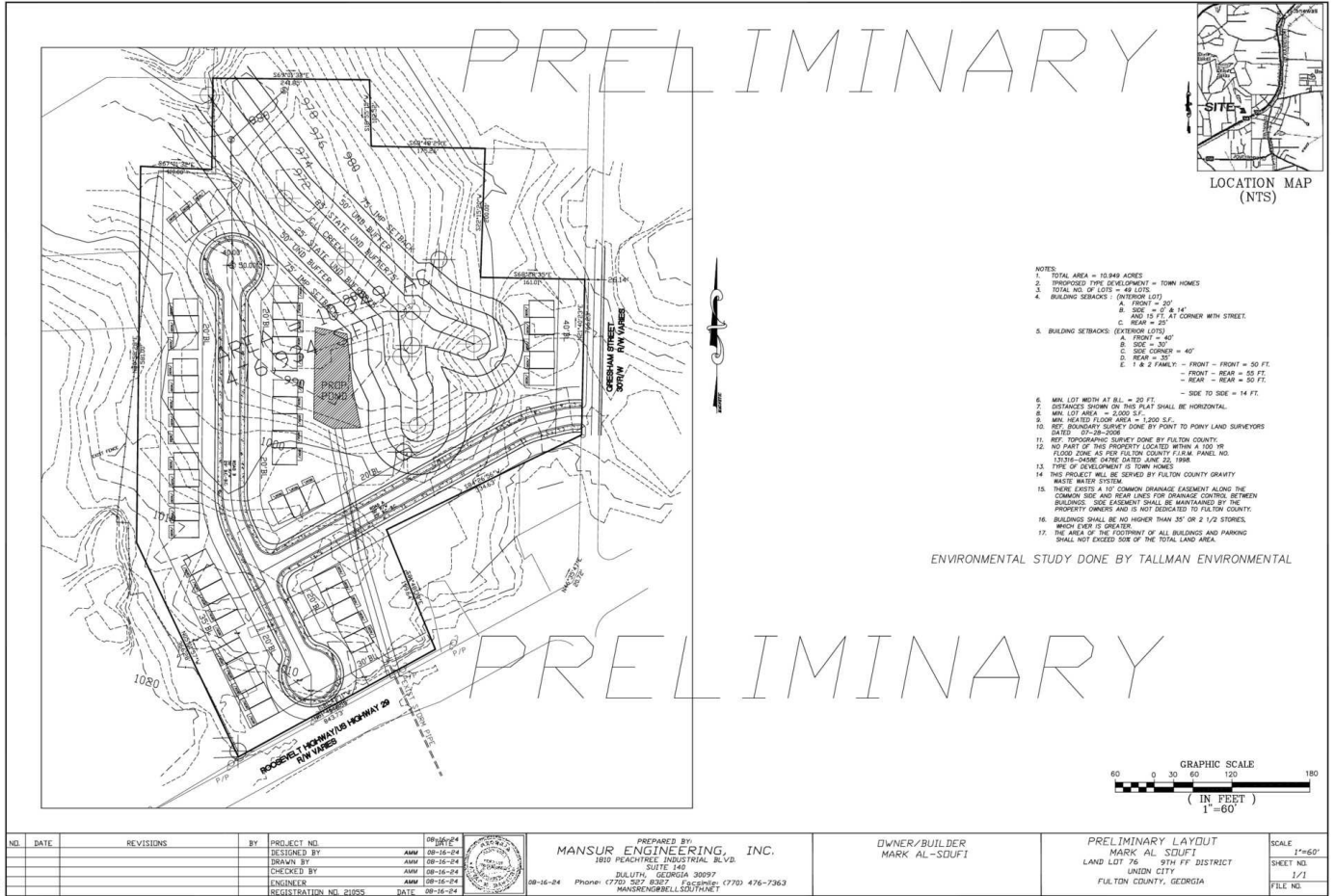
Tom Fulton
 770 329 1410



COLDWELL BANKER
COMMERCIAL
 BULLARD

SITE PLAN

6499 ROOSEVELT HWY
6499 Roosevelt Hwy Union City, GA 30291



Tom Fulton
770 329 1410

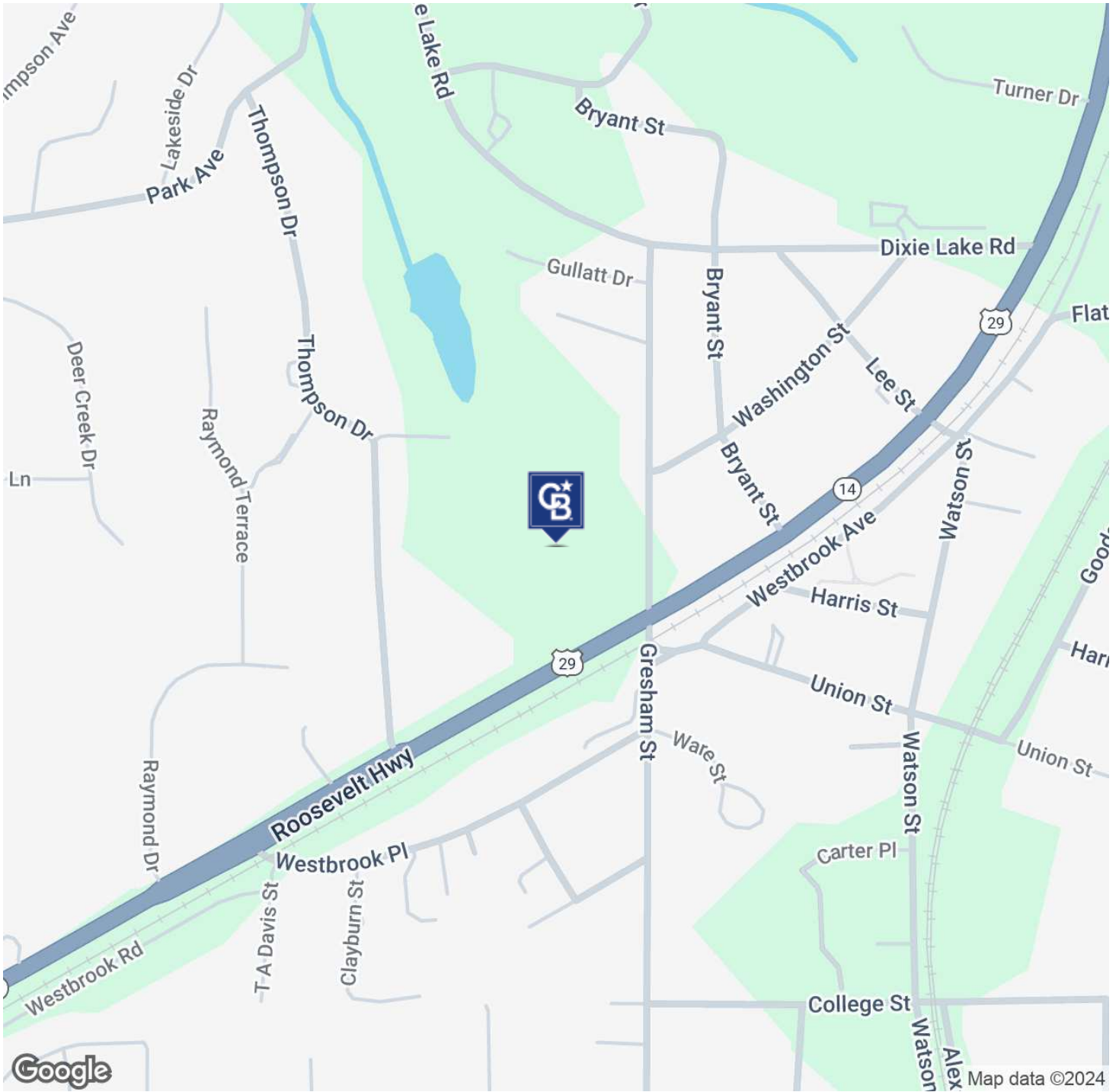


**COLDWELL BANKER
COMMERCIAL
BULLARD**

MAP

6499 ROOSEVELT HWY

6499 Roosevelt Hwy Union City, GA 30291



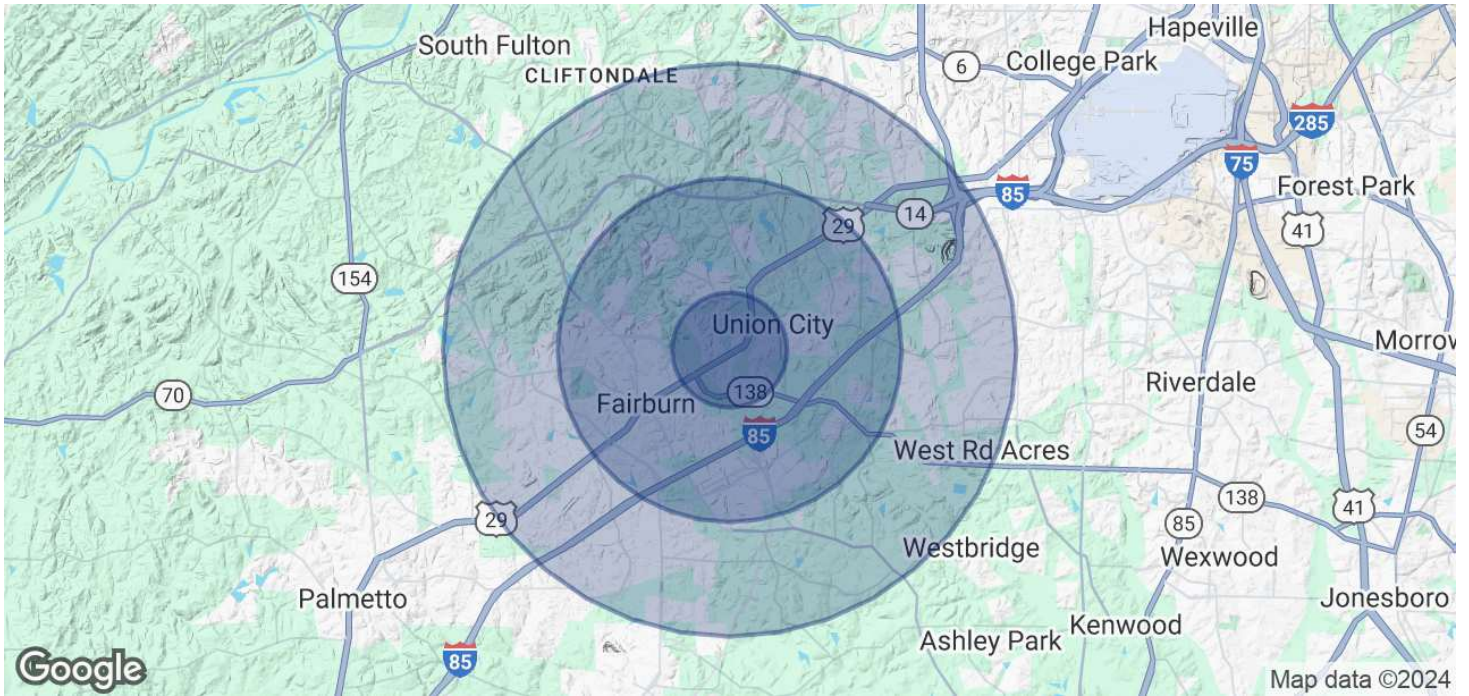
Tom Fulton
770 329 1410



COLDWELL BANKER
COMMERCIAL
BULLARD

DEMOGRAPHICS

6499 ROOSEVELT HWY
6499 Roosevelt Hwy Union City, GA 30291



POPULATION	1 MILE	3 MILES	5 MILES
Total Population	3,948	31,867	73,662
Average Age	29.1	29.8	31.5
Average Age (Male)	26.3	27.4	29.2
Average Age (Female)	32	32.2	33.7
HOUSEHOLDS & INCOME	1 MILE	3 MILES	5 MILES
Total Households	1,437	11,739	26,746
# of Persons per HH	2.7	2.7	2.8
Average HH Income	\$49,439	\$52,292	\$60,905
Average House Value	\$131,465	\$143,718	\$167,041

2020 American Community Survey (ACS)

Tom Fulton
770 329 1410



COLDWELL BANKER
COMMERCIAL
BULLARD